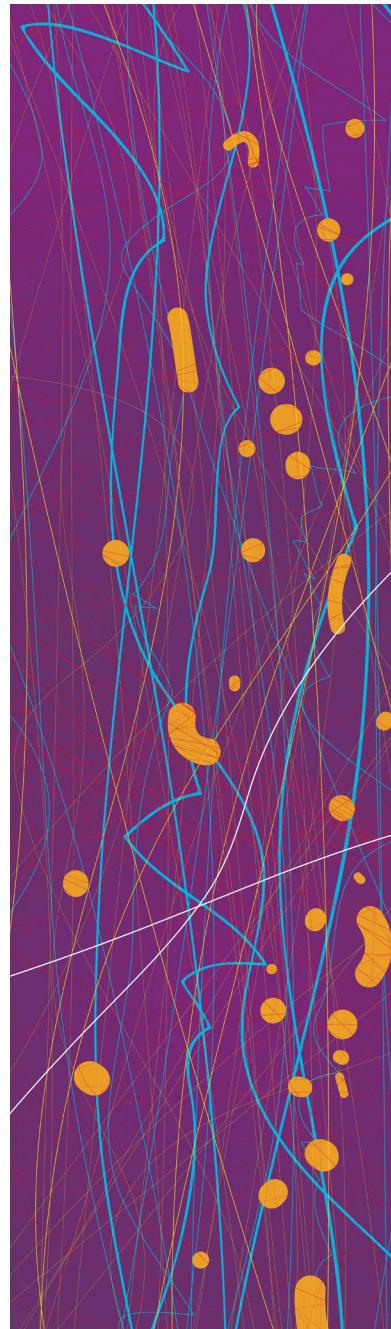


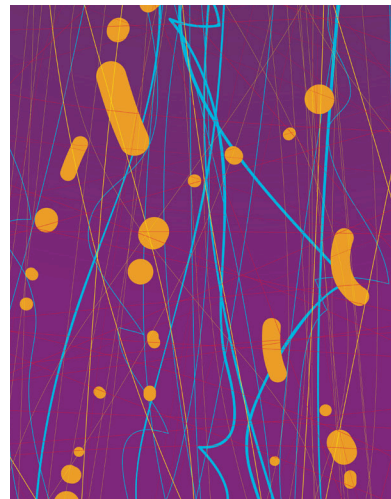
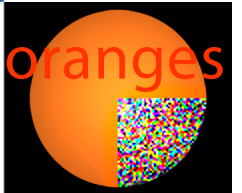
2 0 1 1
2 0 1 2



CATALOG

Creating Architectural Art Glass and Specialty Interiors Products

liquid





*“You can have any color you want,
as long as it’s black.”*

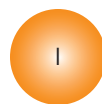
Henry Ford

All artwork, designs, details, information, specifications, concepts presented in this Catalog are protected by national and international intellectual property laws and are © Copyright 2011 liquidoranges,

ALL RIGHTS RESERVED

No portion of this Catalog may be reproduced in whole or part without written consent by liquidoranges, except for presentation purposes in support of a purchase through liquidoranges.

All information, designs, and pricing information is subject to change without notice. Always request a quote to ensure accurate pricing.



Glass

ARCHITECTURAL ART GLASS 1

Storefront

Interior Glass Flooring

Interior Vertical Glass

Exterior Vertical Glass

Counter Tops

Ceilings

Table Tops

Illuminated Art Glass

STANDARD ART GLASS DESIGNS

Specialty Products

HAND TUFTED RUGS & CARPETS 2

TABLEWARE 3

ARTWORKS 4

SUPPORTING DOCUMENTATION 5



Illuminated Art Glass Panel - artwork 012411

Founded in 2008 by Reese Schroeder, AIA liquidoranges is designing, creating and producing functional artwork based products across the architectural and interior design industries.

A registered architect with over twenty-five years of professional practice around the USA, Reese is also a recognized New Media Artist, having worked in the electronic arts for nearly twenty years. His New Media academic affiliations as well as his extensive experience in corporate, hospitality, retail and residential architecture provides the foundation for integrating the aesthetic need with state-of-the-art technologies in the creation of everything produced by the company.

What We Believe

The integration of art with architecture is as fundamental a human need as architecture is for providing shelter. Preserving the relationship between art and architecture is equal to preserving our dignity and civility as a society. Where there is an opportunity for beauty within our built environment, there exists a moment of "place."

liquidoranges products are represented around the world, including the UK, Dubai, UAE, Amsterdam, Atlanta, and Boston.



Liquidoranges Architectural Art Glass:

2 0 1 1
2 0 1 2

What is it?

Our architectural art glass is an amazing synthesis of technologies, combined to produce highly resolved artworks that are used just like clear architectural glass for building exteriors, interiors, entrances, flooring, ceilings, and more. We create our art glass electronically, on computers using various graphics and rendering software. The artwork file is transmitted electronically to a very special machine to produce an "interlayer" without any printing, inks, etc. From the most subtle hues, fades, gradients, and "brush strokes", to exceptionally crisp razor sharp line work, the resulting interlayer resolution approaches 4000 dpi, at a theoretical 36 Billion color potential. This quality is so high that the artwork takes on a "stained glass" effect when sunlight passes through, projecting the artwork colors across adjacent surfaces up to great distances.

We take our artwork interlayer and sandwich it between two pieces of low-iron glass, using PVB or Urethane adhesives to bond the sandwich together under very high pressure and heat. The result is a glass panel that meets Safety Glass requirements for use in various building applications.

Why is it better?

Liquidoranges regularly competes in the architectural and interiors markets with resin and plastics manufacturers. These materials came onto the product scene several years ago to fill a design void; interesting and different solutions for translucent panels. What our competition did not consider is the ability to create architectural glass serving the same function, only better. Interesting and different solutions rendered within the beauty of glass at never before achievable quality.

Where plastics and acrylics have been popular in the past due to lack of quality architectural art glass, architects, designers, and facilities managers now have the opportunity to replace or install new stunning quality panels for every surface of the building, inside and out. From glass flooring, walls, ceilings, furniture surfaces, to building curtain-wall systems, entrances and storefronts, skylights and more, Liquidoranges is changing the creative options across the architectural spectrum.

When compared to plastics, glass is a much higher quality aesthetic. Glass has a very high degree of reflectivity, contributing to its jewel-like beauty. Glass, unlike plastic, is a material made from naturally occurring materials; silica, sand, and fire. In fact, glass occurs naturally. It is considered by architects and designers to be a "real" material, where plastics are synthetic. Its beauty and practicality continue to be appreciated from its first use thousands of years ago.

Functionality:

- Glass has a hardness value of 6.0 on the Mohs scale. This is equal to titanium and quartz. Things that can scratch glass are Topaz, Rubies, and Diamonds.
- Glass is an inert material, resistant to most chemicals and acids.
- Glass has a softening point beginning at around 1332°F, whereas plastics begin melting at around 400°F (Acrylic. Other plastics vary depending on the type used.) Fabrication of glass is more readily performed as heat is not usually an issue. Plastics must be fabricated more carefully due to tool-generated heat causing potential melting during cutting, etc.
- Tempered glass is four times stronger than annealed glass, offering tremendous advantages over plastics.

Maintenance:

- Glass is much easier to clean than plastics. Care must be taken with plastics when using solvent-based cleaners. Rubbing plastic panels with a dry cloth will create scratches, eventually dulling the appearance. With glass, the most reckless cleaning crew will not harm the surface.
- Glass has better impact resistance without scarring, whereas plastics can be gouged or marked.



Customization:

The foundation of Liquidoranges is our ability to provide unique, custom, original, and exclusive art glass to our clients. Every project is custom, regardless of how modular or standardized it is, so we are best suited for the special project as well as the corporate re-branding rollout. While we provide manufacturing to other companies using their graphics, our prime mission is to create truly unique and beautiful glass unlike anything else out there. Our plastics competition offers some customization at special up-charge pricing. At Liquidoranges, since everything we do is custom, there are NO setup fees, NO up-charges for special colors, designs, etc. The only thing we charge extra for is original fine art in glass, as many hours go into creation.

The Liquidoranges GREEN Initiative:

Every work of art glass at Liquidoranges begins as New Media art, electronically, or digitally created on the computer screen of the artist. Only when a new artwork is deemed finished, is the work sent electronically to our interlayer production equipment. Our artworks are projected by RGB laser onto our proprietary interlayer, using no inks and no solvents.

We use PPG Starphire® low-iron glass, a “Cradle to Cradle” Silver Certified™ material. The lamination process uses renewable natural gas fired autoclaves. Our entire process from beginning to end is locally produced within a 75 mile radius of our headquarters, including all post-lamination machining, fabrication and finish work. Our laminated art glass is recyclable through separation processes, including recycling of our interlayer and reclamation of the coatings.

Liquidoranges as a business is a high technology, fully web based business with very minimal paper consumption. We recycle our paper and glass waste as part of our overall global responsibility to be resource-conscious.

Our exclusive freight service is a leader in low-carbon footprint national and international shipping. With over 80 carriers available, we are able to ship within two hours of crating the glass. Freight is bundled with other shipments destined for the same area.

In the end, what really matters is the wow factor our clients experience. Intended for public spaces, private places, joyful, productive, solemn, corporate, hospitality, this New Media glass promotes the vibrancy of spaces participating through people as magnificent and integral luminous walls, entrances, displays, features, furniture, and everything an architect and interior designer can imagine. The projective quality of this glass takes on a life of its own, cascading colors across spaces, ever changing, adding new layers of depth and pattern throughout the days. We are integrating art into architecture through glass.

2011
2012

Storefronts & Entrances

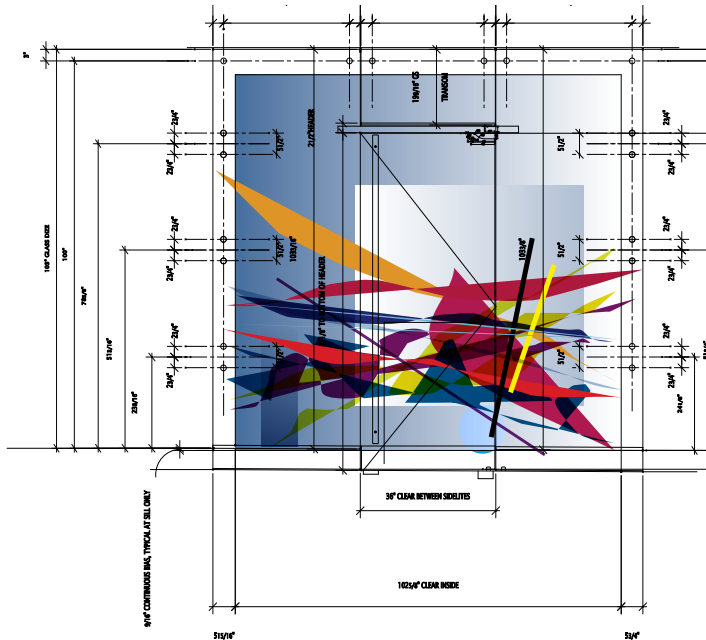
1/2" tempered/laminated door and sidelights, ©2009

Storefronts & Entrances:

These artworks in glass are produced to meet all building code requirements where all-glass is specified. Every installation is manufactured specific to architectural criteria as defined by the architect or designer. Artwork is rendered onto drawings of the proposed opening for review and approval by the Owner. Glass panels are machined to accommodate your hardware, edge conditions, installation preferences, etc. and are installed by your glazing contractor. liquidoranges produces shop drawings for submission, review and approval prior to fabrication.

Typical lead time is approximately 6 to 8 weeks from approved artwork and shop drawings. Quotes are provided based on architect or designer drawings, specific to the project. Due to the many variables that may be included in an entrance design, we can not offer a "rule of thumb" cost.

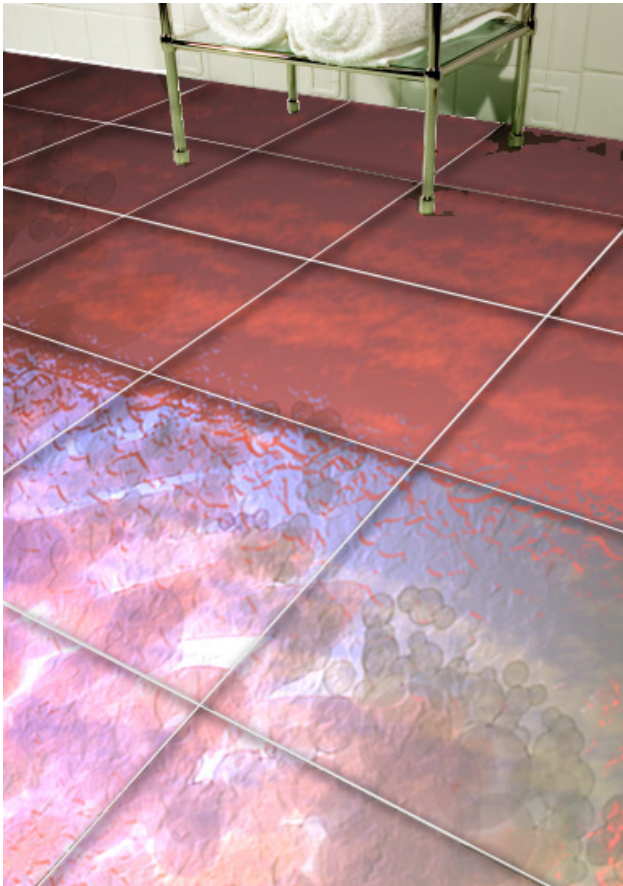
All glass used by liquidoranges, unless otherwise specified, is PPG Starphire low-iron, Silver Certified "Cradle to Cradle" environmentally responsible. Low-Iron glass is optically much clearer than standard glass, rendering the artwork within the glass at the highest quality without any color shift.



Layout drawing ready for fabrication.

DIVISION
08

GLASS TYPE	LAMINATION	GLASS THK	HEIGHT	WIDTH	EDGE
TEMPERED SAFETY	PVB/URETHANE	0.25"	48	24	GROUND/POLISH/NONE
		0.375"	72	48	
		0.50"	120	48 (1)	
(1) Glass width up to 60" with hairline interlayer seam					



1.25" Tempered triple laminated glass panels set in support frame.

Interior Glass Flooring:

Glass floor panels are typically 1.25" triple laminated tempered glass with our art interlayer between the bottom and middle lite. Panels are available in two standard sizes with full custom sizing available.

This is an integrated system, designed to work with the raised floor pedestal as manufactured by Specialty Raised Flooring, Inc. Three options are available: (1) glass panels in SRF raised floor system, (2) glass panels in SRF raised floor system married to Tate® Access Flooring system, and (3) individual panels for flush set installation into other suitable support systems.

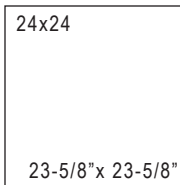
Typical lead time is approximately 6 to 8 weeks from approved artwork and shop drawings. Quotes are provided based on architect or designer drawings, specific to the project.



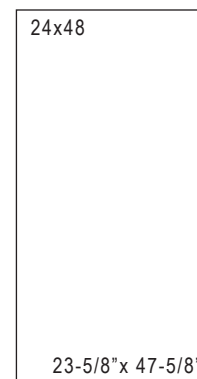
White panels installed at 555 W 23rd ST., NYC

2011
2012

Interior Glass Flooring



Nominal and actual sizes for typical panels.



DIVISION

08

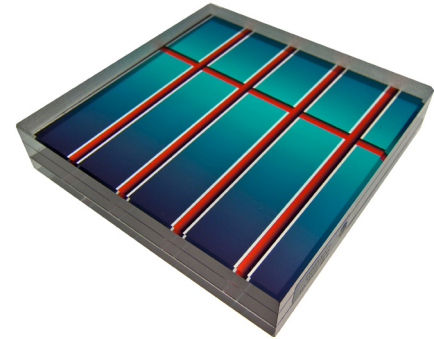
GLASS TYPE	LAMINATION	GLASS THK	LENGTH	WIDTH	EDGE
TEMPERED SAFETY	PVB/URETHANE	1.25"	24	24	ALIGNED ONLY
			24	48	
			NOTE 1, 2		
(1) CIRCULAR DISC AVAILABLE					
(2) ODD SHAPE. RADIUS AVAILABLE					



LEFT:

A complete 24" x 48" Art Glass floor panel in raised floor frame on adjustable pedestals.

2011
2012



Interior Glass Flooring

How to Order:

Because tempered glass panels can not be modified once manufactured, it is critically important to have accurate field measurements for both new and existing construction. From your measurements, a CAD file must be prepared and submitted to us for review. We will prepare a Pricing Proposal for the complete project, including all glass panels, artwork, floor panel support system (if required), crating, freight to your project site, and installation by our installers. This is performed at NO COST.

1. Field Measurements - Prepare Cad File
2. Pricing Proposal Submittal For Acceptance
3. Artwork Commission or specify artwork number
4. Client Review Of Artwork Over Floor Drawing
5. Samples Submittal
6. Fabrication Drawing Submittal
7. Commence Fabrication
8. Delivery to Project Site
9. Installation

GLASS THICKNESS	LAMINATION	TYPE	APPROX. COST/SF
1.25"	TEMPERED/3xLAM	CLEAR/WHITE	\$62.70
		ART GLASS	\$82.70
This pricing is based on 4 SF MINIMUM purchase. Pricing is for budget purposes only. Always request a quote based on your project drawings.			

Typical Preliminary Layout Drawings

Material List

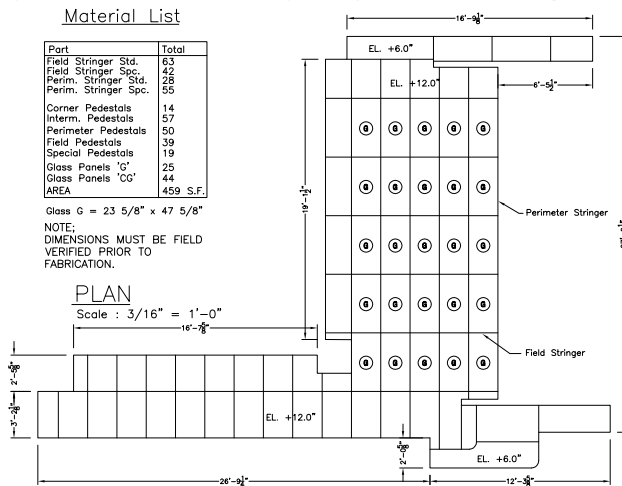
Part	Total
Field Stringer Std.	63
Field Stringer Spc.	42
Perim. Stringer Std.	28
Perim. Stringer Spc.	55
Corner Pedestals	14
Intern. Pedestals	57
Perimeter Pedestals	50
Field Pedestals	39
Special Pedestals	19
Glass Panels 'IG'	25
Glass Panels 'CG'	44
AREA	459 S.F.

Glass G = 23 5/8" x 47 5/8"

NOTE:
DIMENSIONS MUST BE FIELD
VERIFIED PRIOR TO
FABRICATION.

PLAN

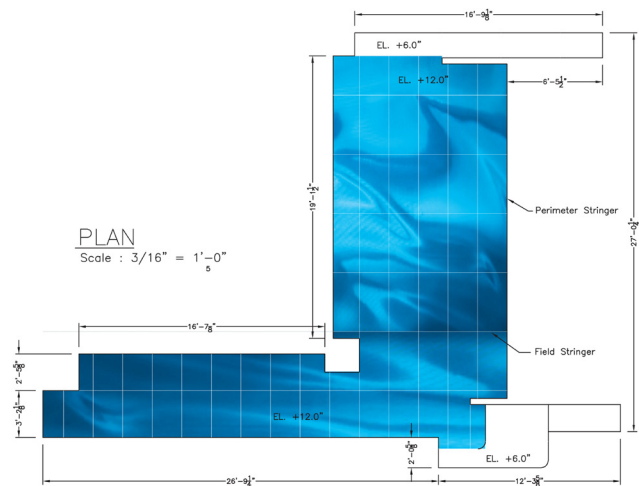
Scale : 3/16" = 1'-0"



Preliminary floor layout with overall dimensions and panel count

PLAN

Scale : 3/16" = 1'-0"

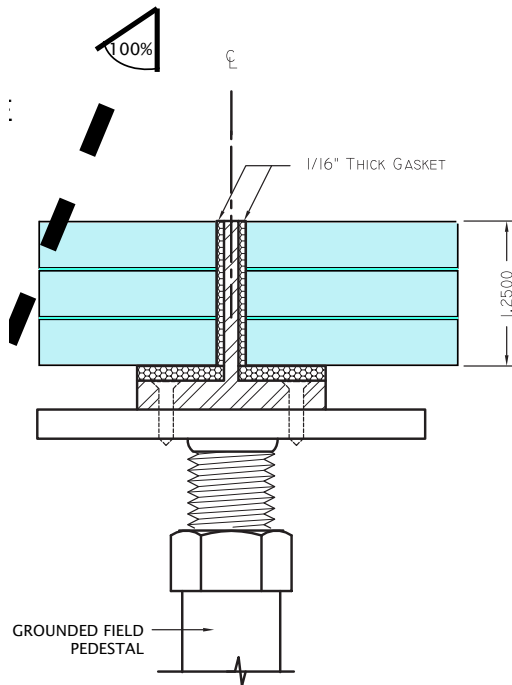


Preliminary artwork layout

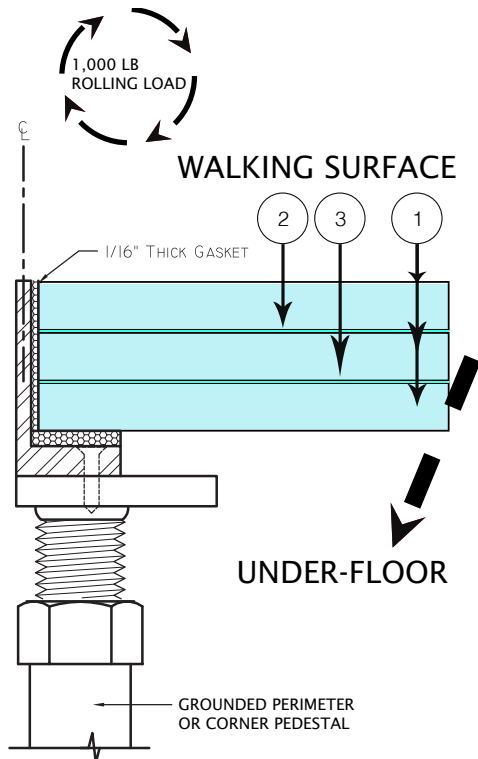
DIVISION
08

Typical Details

Be sure to check our website for the latest details and specifications.



1.25" Tempered triple laminated glass panels set in support frame.



1.25" Tempered triple laminated glass panels set in support frame.

NOTE: liquidoranges RECOMMENDS "SPECIALTY RAISED FLOORING" RAISED GRID SYSTEM. FOR MORE INFORMATION SEE OUR WEBSITE: BUSINESS PARTNERS/SPECIALTY RAISED FLOORING

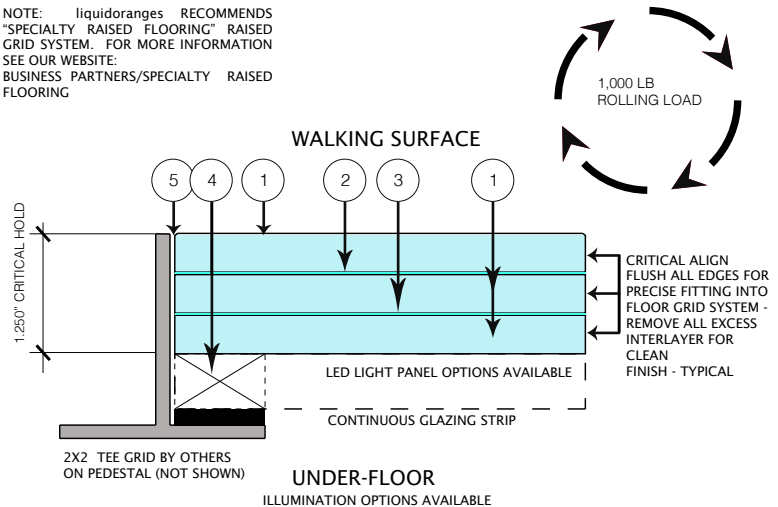
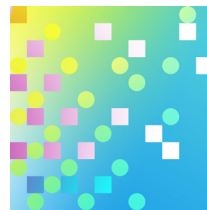


FIGURE 1 - FLOOR PANEL: LAMINATED GLASS - WHITE PVB FILTRATION



ART REF: 050610
FOR LOS USE ONLY

- 1 3/8" TEMPERED LOW-IRON GLASS
- 2 0.30 CLEAR PVB - or - 0.050 URETHANE
- 3 a. 0.30 CLEAR PVB - or - 0.050 URETHANE
b. PROPRIETARY ART INTERLAYER
c. 0.30 WHITE PVB (OR CLEAR) - or - 0.050 URETHANE
- 4 CONTINUOUS SETTING BLOCK THICKNESS DEPENDENT ON LED PANEL USE.
- 5 APPROVED SILICONE NONACID SEALANT - CONTINUOUS

Art Glass Floor Panel

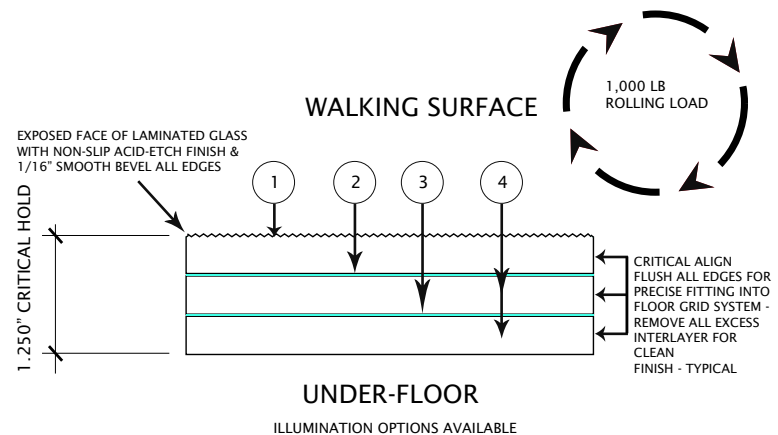


FIGURE 1 - FLOOR PANEL: LAMINATED GLASS - WHITE PVB

- 1 3/8" TEMPERED "CRYSTAL CLEAR" LOW-IRON GLASS - ACID-ETCH NON-SLIP SURFACE
- 2 0.30 CLEAR PVB INTERLAYER GLUE
- 3 0.30 OPTI-WHITE PVB INTERLAYER GLUE
- 4 3/8" TEMPERED "CRYSTAL CLEAR" LOW-IRON GLASS

Clear Glass Floor Panel



Cable supported exposed edge divider panels.

An entire world exists within interior design by taking advantage of the seemingly mundane, functional requirements of defining space and transforming them into moments of arrival. These glass panels are statements of client appreciation for their guests and users. Vertical art glass lends itself to such experiences, offering pause and excitement, privacy and identity, integration of art where traditional use of glass would have displaced it. Vertical art glass gives that interior space a real “pop”.



Wall mounted glass panels butt-glazed w/o sealant.

2011
2012

Interior Vertical Glass

GLASS TYPE	LOCATION/USE	LAMINATION	GLASS THK	HEIGHT	WIDTH	EDGE
TEMPERED SAFETY	below 24" AFF	URETHANE	0.25"	48	24	GROUND/POLISH/NONE (3)
			0.375"	72	48	
			0.50"	120	48 (1)	
SAFETY (NON-TEMP)	above 24" AFF (2)	URETHANE	0.25"	48	24	GROUND/POLISH/NONE (3)
			0.375"	72	48	
			0.50"	120	48 (1)	
(1) Glass width maximum is 48" - up to 60" with hairline interlayer seam						
(2) Consult your Building Code for all glass and glazing requirements.						
(3) Fully captured glass does not require edge finishing. Butt-glazed requires ground edge when sealed, and polish edge when exposed.						

DIVISION

08

Edge work and hole drilling is one of the premium cost drivers for this product. If your glass panels are fully captured in frames, there is no need to provide any edge finishing. If you intend to have exposed edges, polishing is required to correct any non-alignment between glass layers from the laminating process, as well as providing a completely smooth, jewel-like condition. When butt-glazing these panels, the same applies if you intend to leave open gaps between panels. When sealing between panels a ground edge is best. Only use an approved non-acidic pure silicone sealant when butt-glazing.

Typical lead time is approximately 6 to 8 weeks from approved artwork and shop drawings. Quotes are provided based on architect or designer drawings, specific to the project.

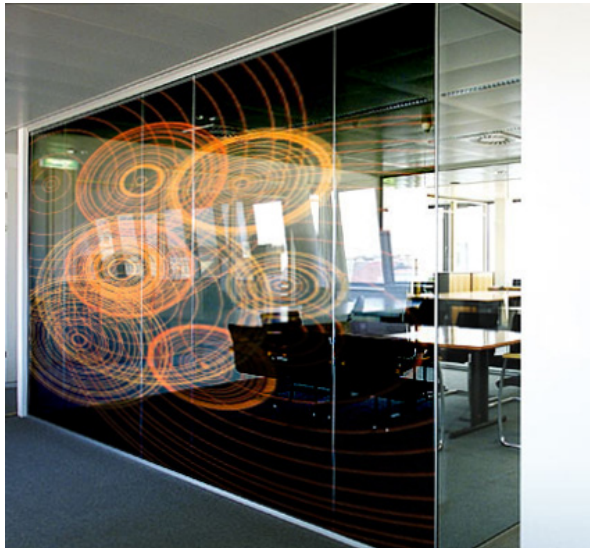
Typical Details

Be sure to check our website for the latest details and specifications.

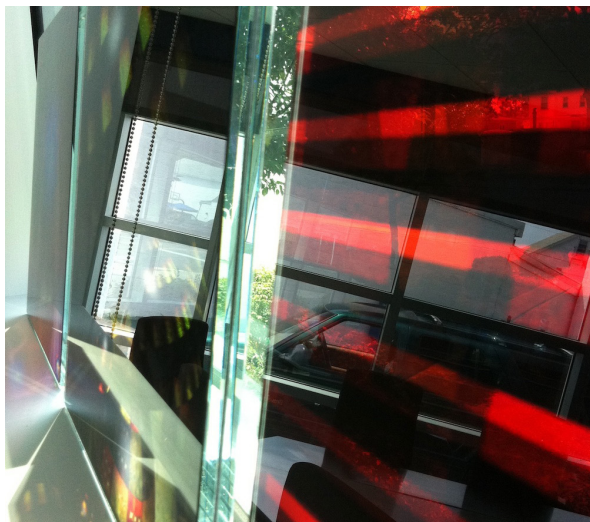
How to Order:

Because laminated tempered glass panels can not be modified once manufactured, it is critically important to have accurate field measurements for both new and existing construction. From your measurements, a CAD file must be prepared and submitted to us for review. We will prepare a Pricing Proposal for the complete project, including all glass panels, edge work, holes drilled, artwork, specialized hardware (if required), crating, freight to your project site, and installation by your glazing contractor. This is performed at NO COST.

1. Field Measurements - Prepare Cad File
2. Pricing Proposal Submittal For Acceptance
3. Artwork Commission or specify artwork number
4. Client Review Of Artwork Over Floor Drawing
5. Samples Submittal
6. Fabrication Drawing (Shop Drawing) Submittal
7. Commence Fabrication
8. Delivery to Project Site
9. Installation



Butt-glazed panels top/bottom captured in aluminum frame.



Polished edge condition.

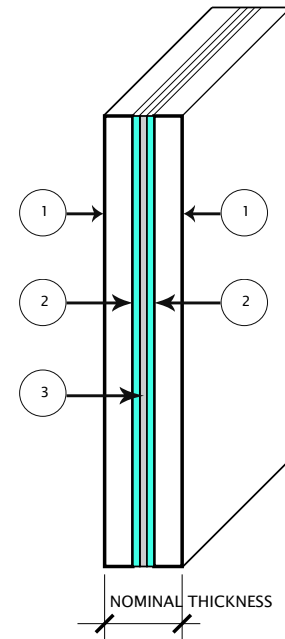


FIGURE 1. - INTERIOR LAMINATED ART GLASS

- 1 LOW IRON GLASS: SPECIFY THICKNESS PER DESIGN REQMT
- 2 PVB WITH 99% UV INHIBITOR 380NM (FIGURE 3) - or - 0.050 URETHANE
- 3 PROPRIETARY ART INTERLAYER

EDGE FINISHING	PREMIUM
NONE	\$0.00 add
GROUND	\$1.00/INCH add
POLISHED	\$1.50/INCH add

HOLES DRILLED	PREMIUM
NONE	\$0.00 add
Up to 3/4" Ø	\$20.00/EA
Large Holes	Quoted per Project

GLASS THICKNESS	TYPE	APPROX. COST/SF
1/4"	LAM	\$36.50
	TEMPERED/LAM	\$45.30
3/8"	LAM	\$39.80
	TEMPERED/LAM	\$50.80
1/2"	LAM	\$48.20
	TEMPERED/LAM	\$54.80
This pricing is based on 4 SF MINIMUM purchase. Pricing is for budget purposes only. Always request a quote based on your project drawings.		

DIVISION

08

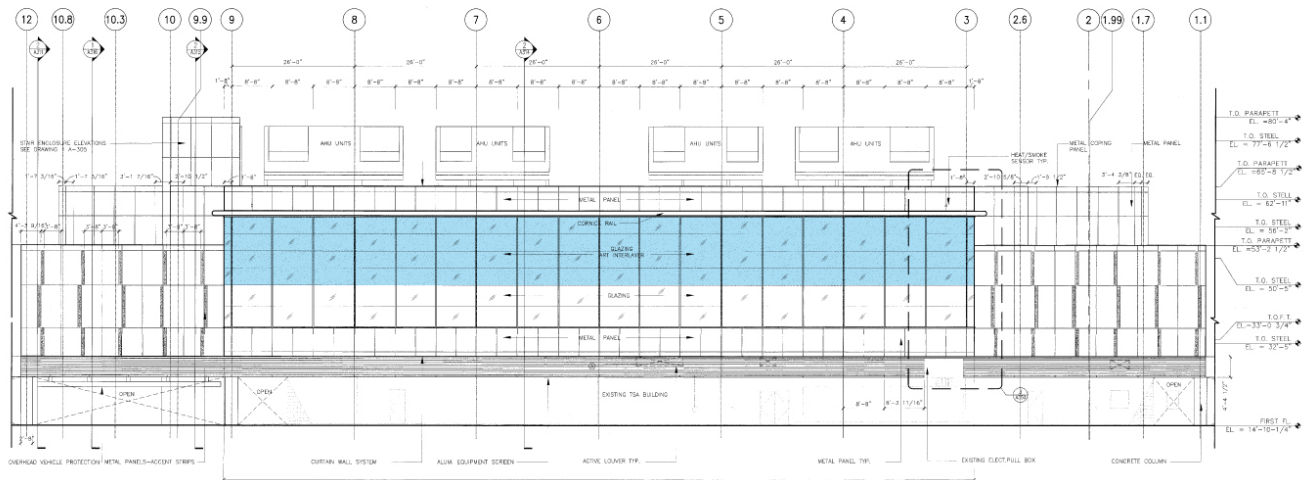
Interior Vertical Glass

2011
2012

Exterior Vertical Glass

DIVISION

08



High Performance Exterior Insulated Glazing Units (IGU)

For building exteriors, we offer custom spec High Performance IGU for storefront and curtain wall applications. We build our units according to your Energy Code glazing specification, including performance coatings, argon gas filled insulated units. This is a highly specialized area of manufacturing, performed by our certified and trained lamination facility.

Typical lead time is approximately 6 to 8 weeks from approved artwork and shop drawings. Quotes are provided based on architect or designer drawings, specific to the project. Due to the many variables that may be included in an IGU, we can not offer a "rule of thumb" cost.

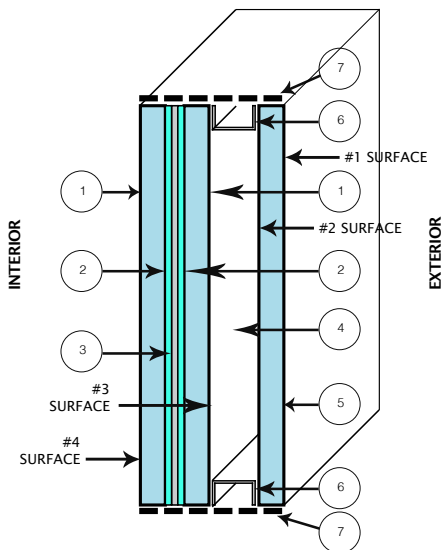


FIGURE 1. - EXTERIOR INSULATED LAMINATED ART GLASS UNIT

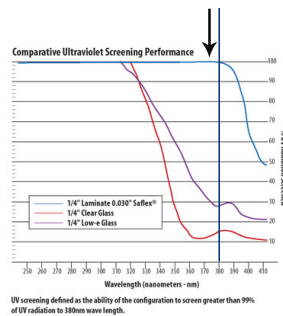
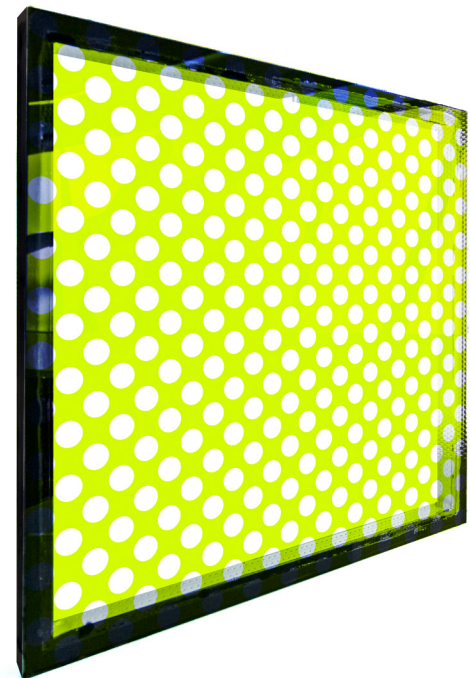
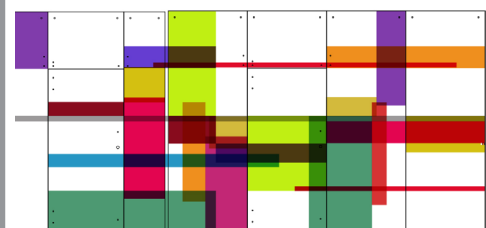


FIGURE 3 - PVB UV

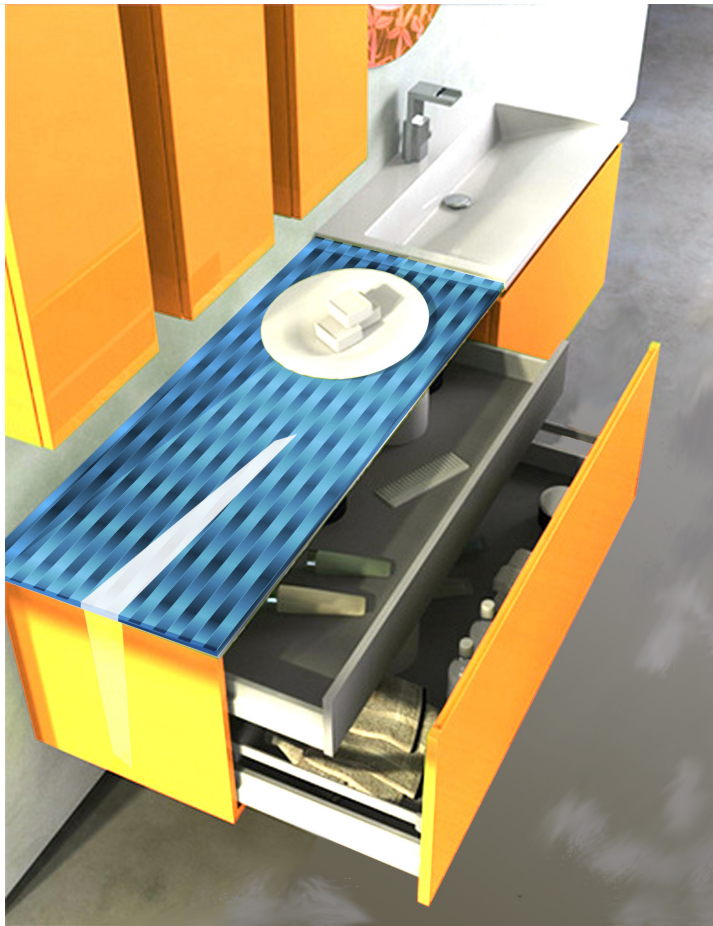
- | | |
|--|---|
| 1 LOW IRON GLASS: SPECIFY THICKNESS PER DESIGN REQMT | 4 AIR SPACE - OR - ARGON GAS FILLED (SPECIFY PER BLDG. PERFORMANCE REQMTS) |
| 2 PVB WITH 99% UV INHIBITOR 380NM (FIGURE 3) | 5 LOW IRON GLASS WITH "SOLARBAN 60" OR EQ. COATING ON #2 SURFACE (SPECIFY PER BLDG. PERFORMANCE REQMTS) |
| 3 PROPRIETARY ART INTERLAYER | 6 ALUMINUM SPACER BONDED TO GLASS LAYERS WITH STRUCTURAL SILICONE SEALANT (SPECIFY BLACK) |
| | 7 STRUCTURAL SILICONE SEALANT ALL EDGES OF INSULATED GLAZING UNIT |



DT003 Pattern



Entrance and Storefront design is transformed.



Drop-In sinks are best in glass counter tops.

Counter Tops:

Glass counter tops are typically 0.75" laminated or 1.25" triple laminated tempered glass with our art interlayer between the bottom and middle lite. Counters are manufactured to fit your project.

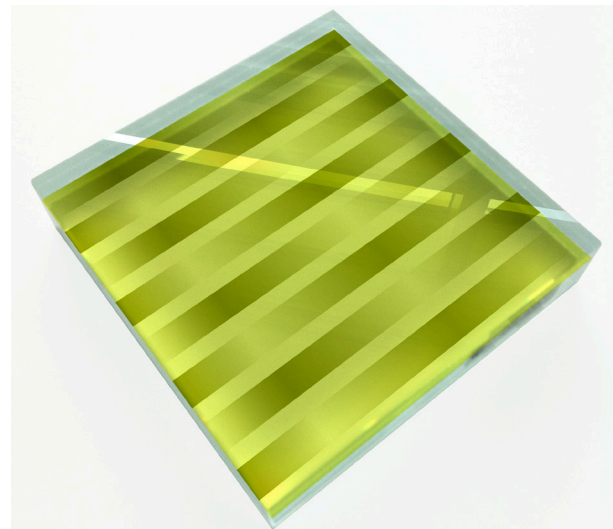
Edge treatment is important to the lifespan of any glass counter top. We offer polished square edge finishing for exposed edge tops.

Typical lead time is approximately 6 to 8 weeks from approved artwork and shop drawings. Quotes are provided based on architect or designer drawings, specific to the project.

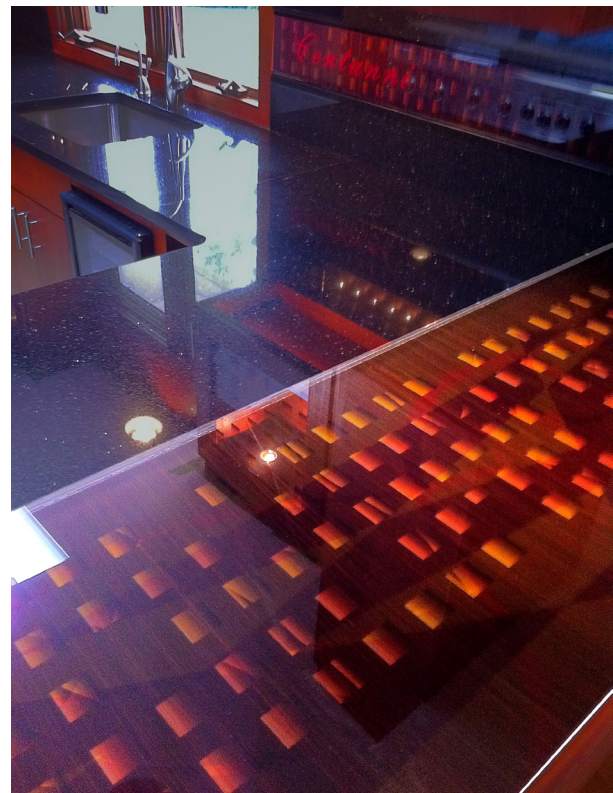
Important Note:

Glass surfaces can scratch and chip if installed in inappropriate locations. In kitchens, it must be understood this is a very high-end product for a high-end space. It is generally specified for its unbelievable beauty over practicality. We recommend tempering glass counter tops, but this is an option. Easy to follow care and use will keep these counter tops looking great for a very long time. We do not recommend installing under-mount sinks due to the transparent nature of glass. Holes for plumbing can be accommodated. Very accurate field measuring is required as, unlike stone, modifications in the field are not possible.

GLASS THICKNESS	LAMINATION	TYPE	APPROX. COST/SF
0.75"	TEMPERED/2xLAM	CLEAR/WHITE	\$46.20
		ART GLASS	\$66.20
1.25"	TEMPERED/3xLAM	CLEAR/WHITE	\$62.70
		ART GLASS	\$82.70
This pricing is based on 4 SF MINIMUM purchase. Pricing is for budget purposes only. Always request a quote based on your project drawings.			



BW001 Pattern



Original artwork for private residence. Note matching backsplash

Good Practice:

The installation above used granite for the working surface of this kitchen, with the art glass counter as a raised bar or eating surface only.

EDGE FINISHING	PREMIUM
NONE	\$0.00 add
GROUND	\$2.00/INCH add
POLISHED	\$3.00/INCH add
HOLES DRILLED	PREMIUM
NONE	\$0.00 add
Up to 3/4"Ø	\$20.00/EA
Up to 1-1/4"Ø	\$25.00/EA
Larger holes	Quoted per Project

2011
2012

Counter Tops

DIVISION

08

2011
2012

Ceilings

2 x 2 tempered laminated art glass ceiling panels.

The proverbial “glass ceiling” is no longer just a metaphor for describing the limiting of our achievements! Glass ceilings are now the transformative design statement for everyone who looks up.

SIZE	APPROX WEIGHT
23-5/8" X23-5/8"	14LBS
23-5/8" X47-5/8"	28LBS

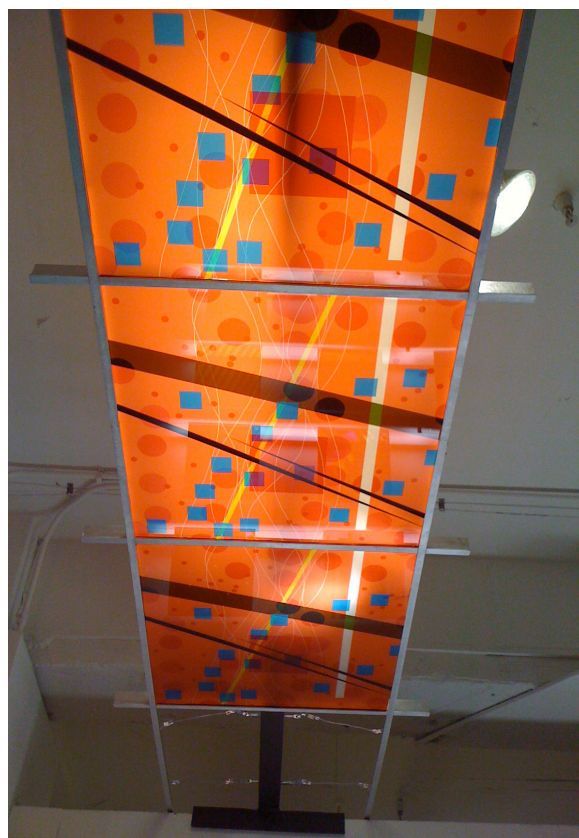
Ceilings:

Glass ceiling panels are designed and manufactured to fit standard 2 x 2 or 2 x 4 grid modules. Only certain grid systems will support the additional weight of glass, and it is important to coordinate your suspension grid requirements. Glass ceiling panels are also designed to fit into architecturally designed light boxes and other design devices.

How to Order:

Because laminated tempered glass panels can not be modified once manufactured, it is critically important to have accurate field measurements for both new and existing construction. From your measurements, a CAD file must be prepared and submitted to us for review. We will prepare a Pricing Proposal for the complete project, including all glass panels, holes drilled, artwork, crating, freight to your project site, and installation by your ceiling contractor. This is performed at NO COST.

1. Field Measurements - Prepare Cad File
2. Pricing Proposal Submittal For Acceptance
3. Artwork Commission or specify artwork number
4. Client Review Of Artwork Over Floor Drawing
5. Samples Submittal
6. Fabrication Drawing (Shop Drawing) Submittal
7. Commence Fabrication
8. Delivery to Project Site
9. Installation

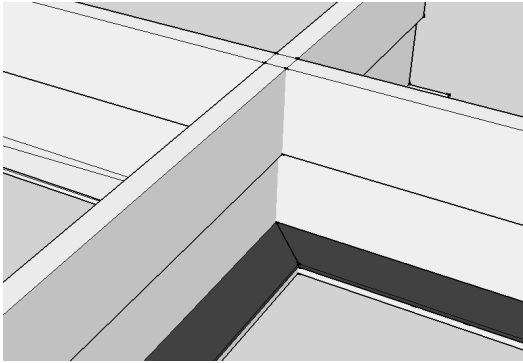


DIVISION

08

Typical Details

Be sure to check our website for the latest details and specifications.



Gasketing is required to prevent light leaks from above.

HOLES DRILLED	PREMIUM
NONE	\$0.00 add
Up to 3/4" Ø	\$20.00/EA
Large Holes	Quoted per Project

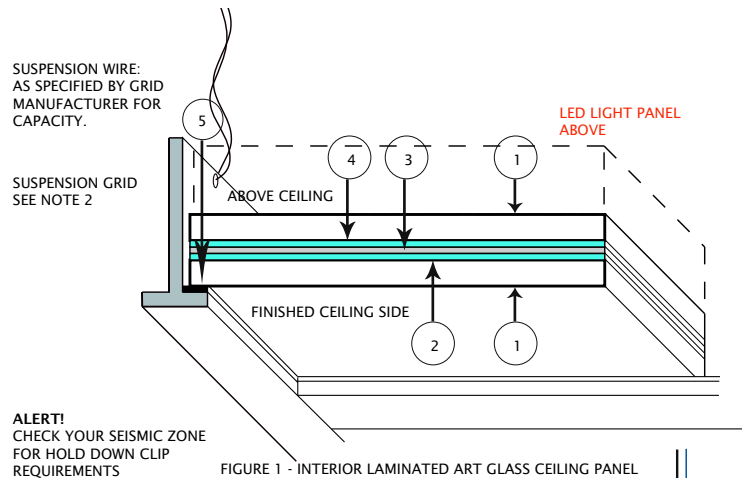
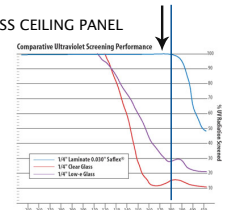


FIGURE 1 - INTERIOR LAMINATED ART GLASS CEILING PANEL

- 1 1/8" TEMPERED LOW IRON GLASS
- 2 0.050 CLEAR URETHANE-OR- .030 PVB (SAFLEX UV)
- 3 PROPRIETARY ART INTERLAYER
- 4 0.050 WHITE URETHANE-OR- .030 PVB (SAFLEX UV) LIGHT FILTRATION LAYER
- 5 0.125 BLACK FOAM GASKET - CONTINUOUS



SAFLEX UV FILTRATION

NOTE:

1. USE LED PANEL FOR TIGHT CEILING AREAS WHERE INTERSTITIAL SPACE PROHIBITS THE USE OF STANDARD LIGHTING SOLUTIONS. LED PANEL IS A HIGH-COST ADDITION AND SHOULD ONLY BE CONSIDERED WHERE THERE ARE NO OTHER ABOVE CEILING FIXTURE OPTIONS THAT PROVIDE EVENLY DISPERSED LIGHTING.

2. GLASS CEILING PANELS WEIGH 3.5LBS/SF, OR APPROXIMATELY 14LBS PER 24"X24" PANEL. DO NOT USE IN LIGHT GAUGE CEILING GRIDS. YOUR GRID MUST HAVE SUFFICIENT BEARING CAPACITY. CHECK WITH YOUR CEILING GRID VENDOR FOR PROPER GRID SELECTION.

GLASS THICKNESS	TYPE	APPROX. COST/SF
1/4"	TEMPERED/LAM	\$41.30
This pricing is based on 4 SF MINIMUM purchase. Pricing is for budget purposes only. Always request a quote based on your project drawings.		

2011
2012

Ceilings

DIVISION

08



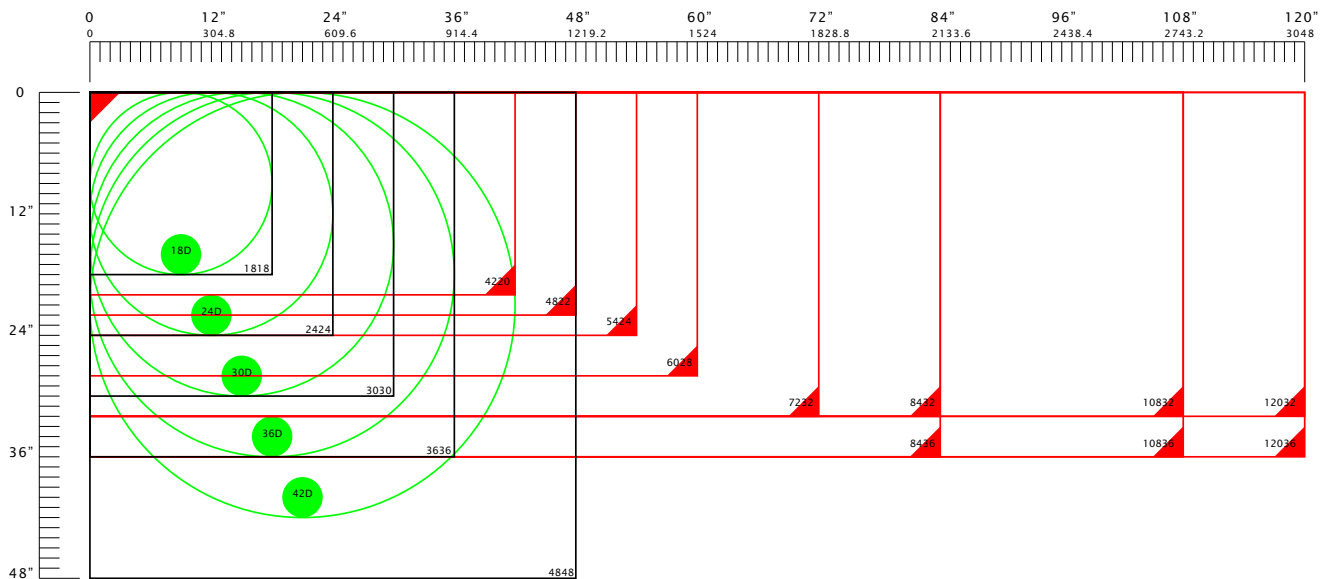
Conference Tables



Specialty Tables

2011
2012

Table Tops

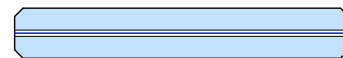


Standard Size Chart

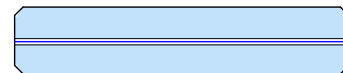
STANDARD TABLE TOP SIZES

panel ID	count	width	length	square feet	thickness
SQUARE	1	18	18	2.25	0.375
	1	24	24	4.00	0.375
	1	30	30	6.25	0.5
	1	36	36	9.00	0.5
	1	48	48	16.00	0.5
RECTANGLE	1	42	20	5.83	0.5
	1	48	22	7.33	0.5
	1	54	24	9.00	0.5
	1	60	28	11.67	0.5
	1	72	32	16.00	0.75
	1	84	32	18.67	0.75
	1	84	36	21.00	0.75
	1	108	32	24.00	0.75
	1	108	36	27.00	0.75
	1	120	32	26.67	0.75
	1	120	36	30.00	0.75
ROUND	1	18D		2.25	0.375
	1	24D		4.00	0.375
	1	30D		6.25	0.5
	1	36D		9.00	0.5
	1	42D		12.25	0.5

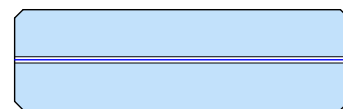
Art Glass table tops are available in many square, rectangular, or round sizes. If the glass edge is intended to be exposed, polishing is required. These tops are quoted on a project basis to include all your requirements.



3/8" (0.375") LAMINATED ART GLASS

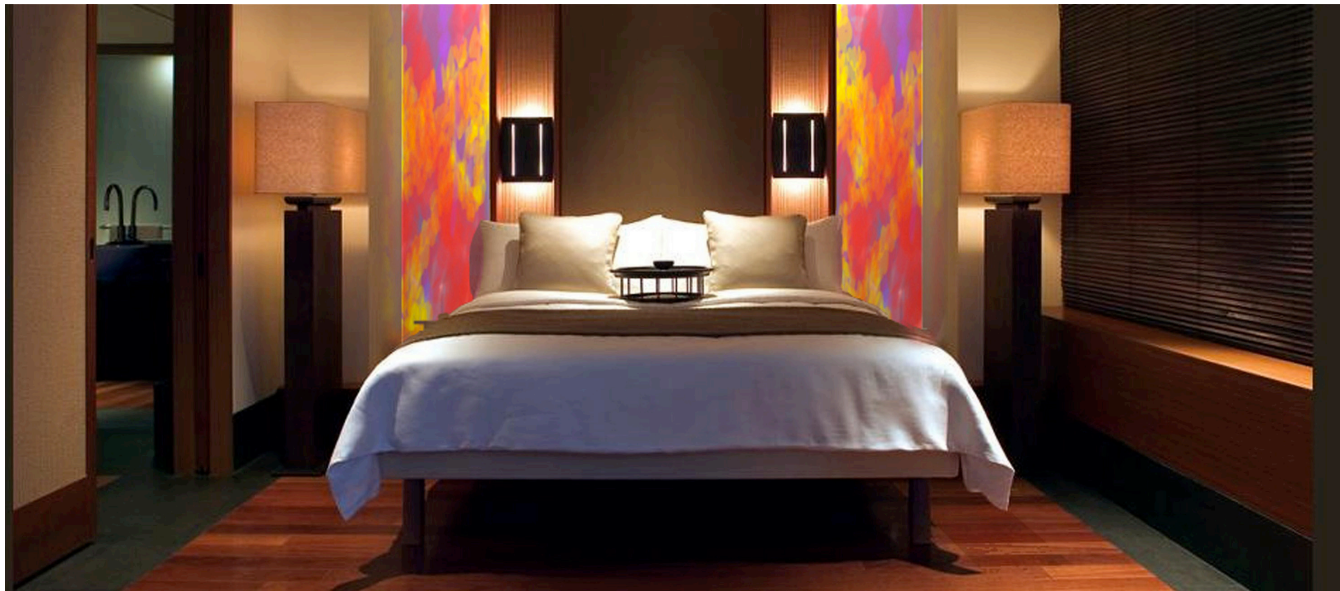


1/2" (0.5") LAMINATED ART GLASS



3/4" (0.75") LAMINATED ART GLASS

Download the complete sizing chart with all information directly from our website. Custom sizes are available. Submit your drawing for pricing.



New for 2011 is our Illuminated Art Glass Panel system, designed with Hospitality in mind.

2011
2012

Illuminated Art Glass

Art that hangs on the wall is nice to look at. Art that participates within the experience of living is exceptional.

Imagine for a moment...

You enter this space. As the door behind you closes, a soft glow emanates from the far wall, welcoming you with color and warmth. You turn on the room lights, and the colors reveal themselves as artworks, as they too brighten.

You're tired, and it's time for bed. Done with the day's work and the TV is off, these artworks dim like the setting sun to ease you into sleep.

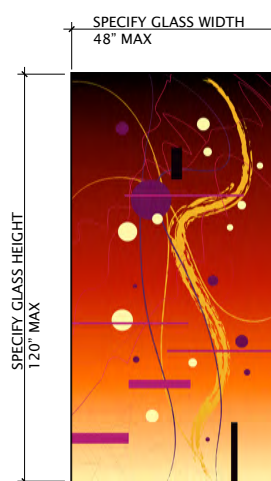
Imagine for a moment...

Capturing the surrounding surfaces in a space you call "sanctuary", the artwork on your wall projects its colors in ambient response.

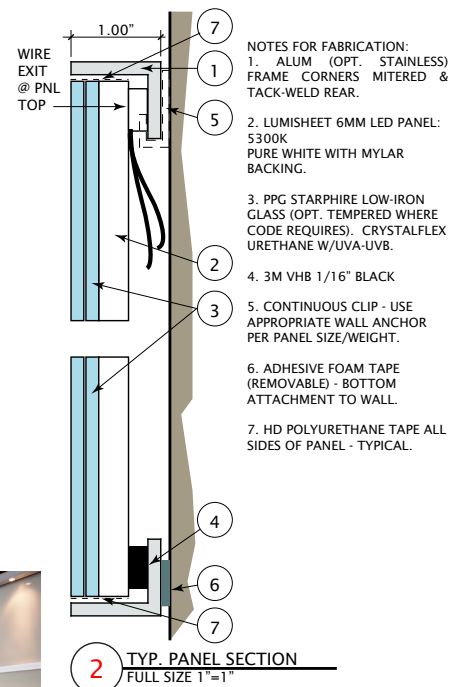
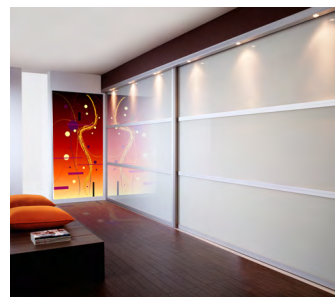
Art as Light:

We've taken the concept of art in glass and have extended it into interior spaces as illuminating features. Our illuminated art glass panels are designed with the latest LED flat panel technology, providing wall mounted art that can be controlled by the room scene controller, dimmed, brightened, etc. Our most advanced system is about an inch thick, complete with frame, and uses a remotely installed transformer. There are many variants to this concept, which include more economical light sources, at increased unit depth.

Of course, you can always use our glass in your light box too. We'll help you with required diffusers to maximize the glass beauty.



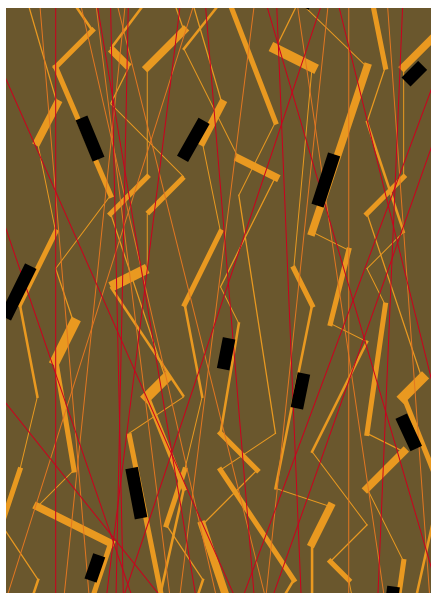
1 TYP. PANEL ELEVATION
NOT TO SCALE



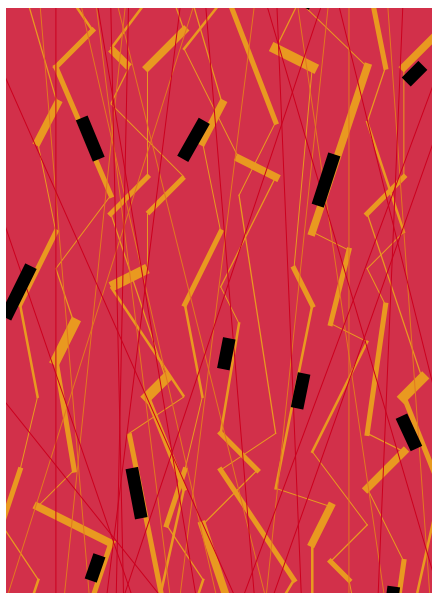
2 TYP. PANEL SECTION
FULL SIZE 1"=1"

- NOTES FOR FABRICATION:
1. ALUM. (OPT. STAINLESS) FRAME CORNERS MITERED & TACK-WELD REAR.
 2. LUMISHEET 6MM LED PANEL: 5300K PURE WHITE WITH MYLAR BACKING.
 3. PPG STARPHIRE LOW-IRON GLASS (OPT. TEMPERED WHERE CODE REQUIRES). CRYSTALFLEX URETHANE W/UV-A-UVB.
 4. 3M VHB 1/16" BLACK
 5. CONTINUOUS CLIP - USE APPROPRIATE WALL ANCHOR PER PANEL SIZE/WEIGHT.
 6. ADHESIVE FOAM TAPE (REMOVABLE) - BOTTOM ATTACHMENT TO WALL.
 7. HD POLYURETHANE TAPE ALL SIDES OF PANEL - TYPICAL.

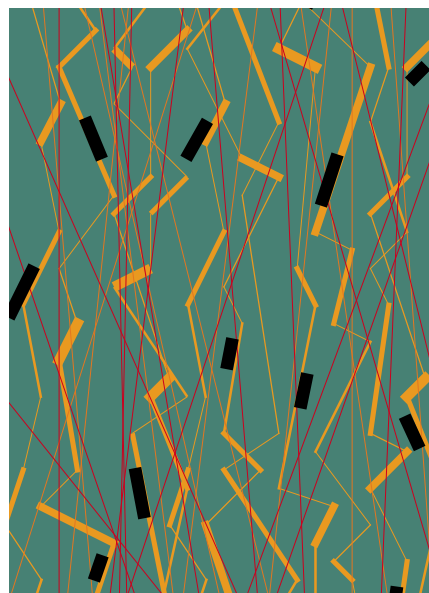
DIVISION
12



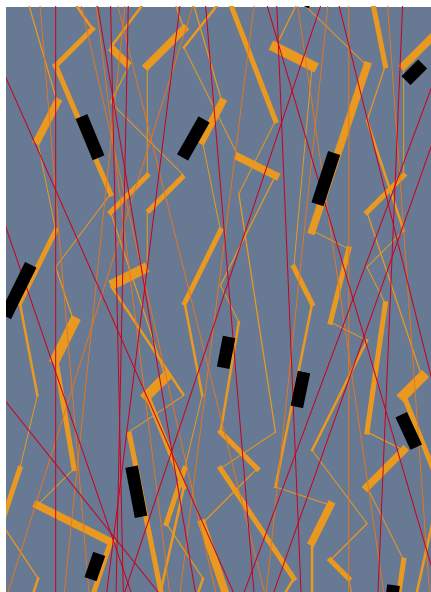
AR1101-1



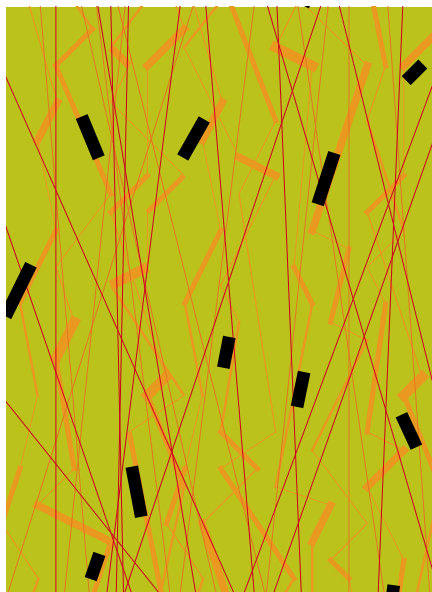
AR1101-2



AR1101-3



AR1101-4



AR1101-5

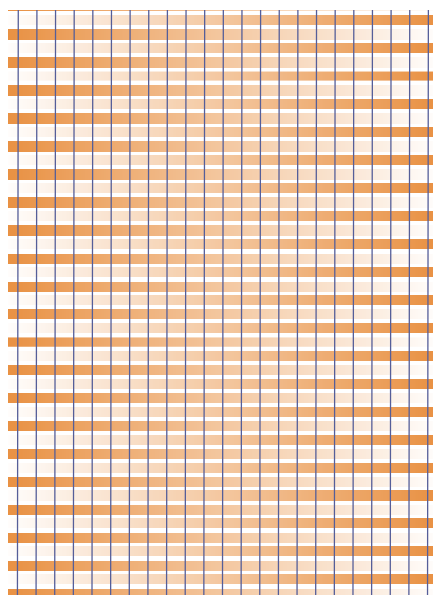
These are examples of the AR1101 Series. You can get them in any color combination you want. Need to match a paint color or Pantone? Give us the RGB or Pantone number and we'll match it*.

*Color matching is very precisely done, but due to the nature of glass, number of glass layers, and any special filtration requirements, your glass colors may appear darker or richer than your paper sample. For this reason, we always recommend including samples in the design process.

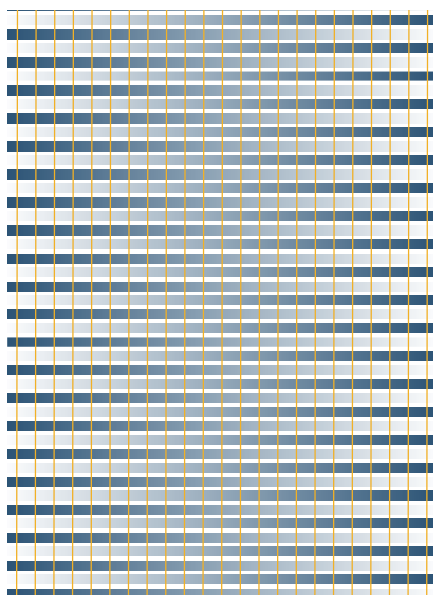
2011
2012

Styles and Glass Designs

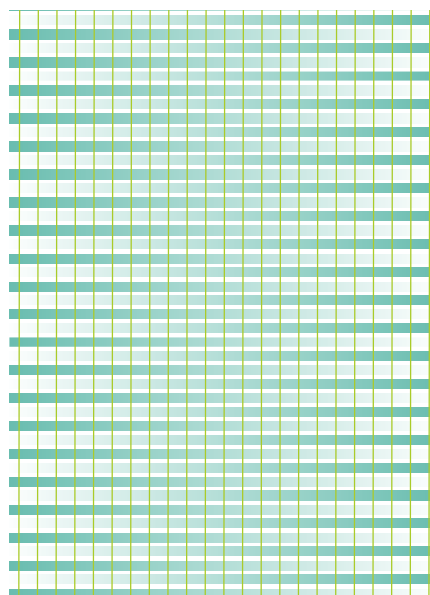




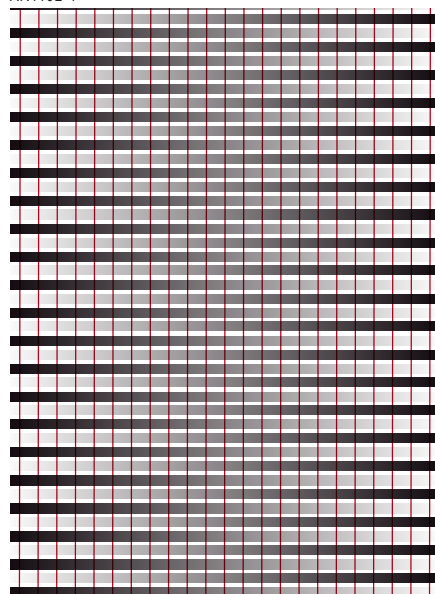
AR1102-1



AR1102-2



AR1102-3



AR1102-4

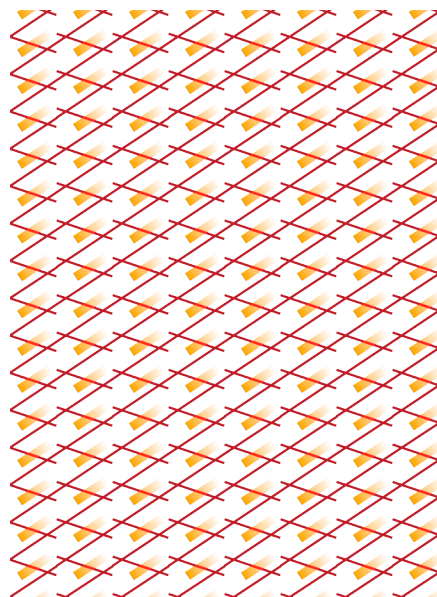
2011
2012

Styles and Glass Designs

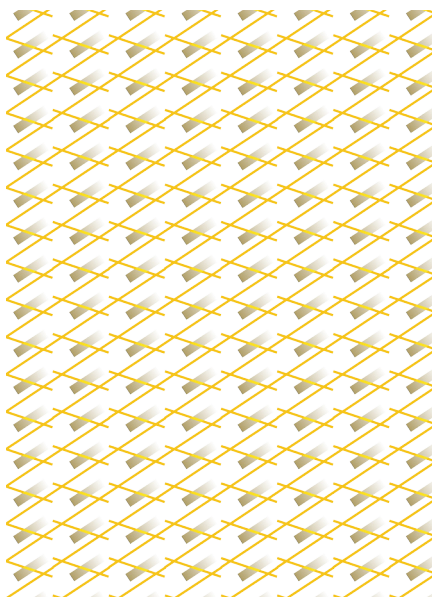
These are examples of the AR1102 Series. You can get them in any color combination you want. Need to match a paint color or Pantone? Give us the RGB or Pantone number and we'll match it*.

*Color matching is very precisely done, but due to the nature of glass, number of glass layers, and any special filtration requirements, your glass colors may appear darker or richer than your paper sample. For this reason, we always recommend including samples in the design process.

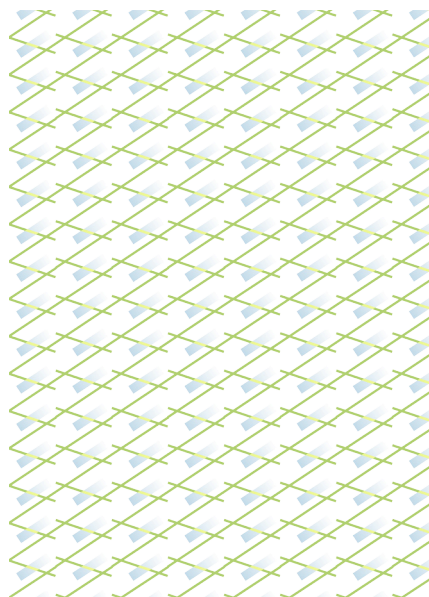




AR1103-1



AR1103-2



AR1103-3



AR1103-4

These are examples of the AR1103 Series. You can get them in any color combination you want. Need to match a paint color or Pantone? Give us the RGB or Pantone number and we'll match it*.

*Color matching is very precisely done, but due to the nature of glass, number of glass layers, and any special filtration requirements, your glass colors may appear darker or richer than your paper sample. For this reason, we always recommend including samples in the design process.

AR1103 SERIES

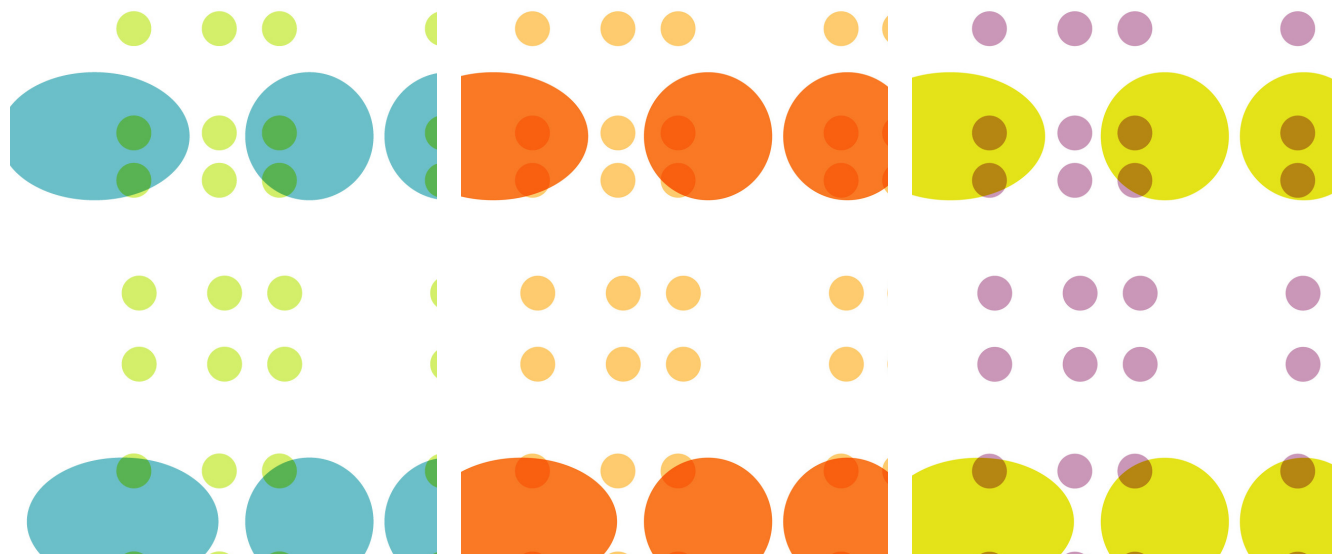
2011
2012

Styles and Glass Designs



DIVISION

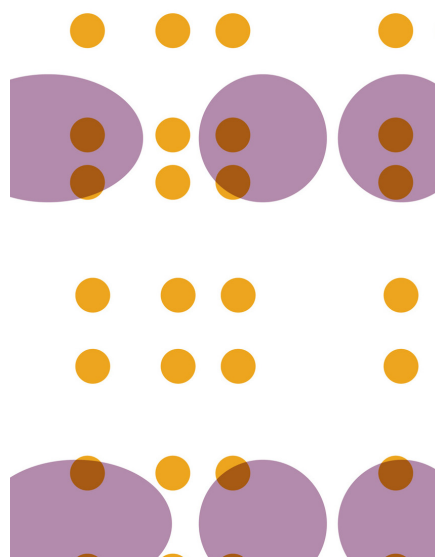
08

2011
2012

AR1105-1

AR1105-2

AR1105-3



AR1105-4

AR1105-5

These are examples of the AR1105 Series. You can get them in any color combination you want. Need to match a paint color or Pantone? Give us the RGB or Pantone number and we'll match it*.

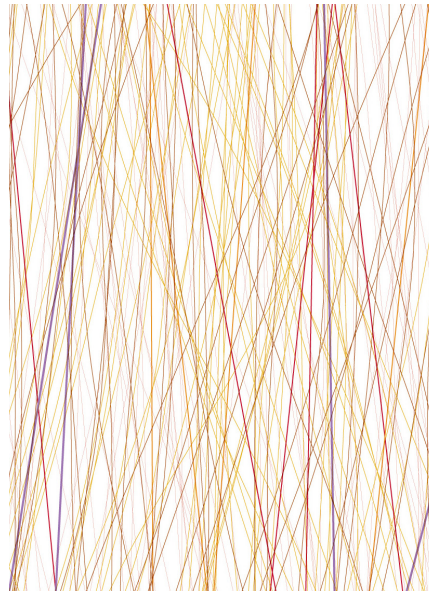
*Color matching is very precisely done, but due to the nature of glass, number of glass layers, and any special filtration requirements, your glass colors may appear darker or richer than your paper sample. For this reason, we always recommend including samples in the design process.

Styles and Glass Designs





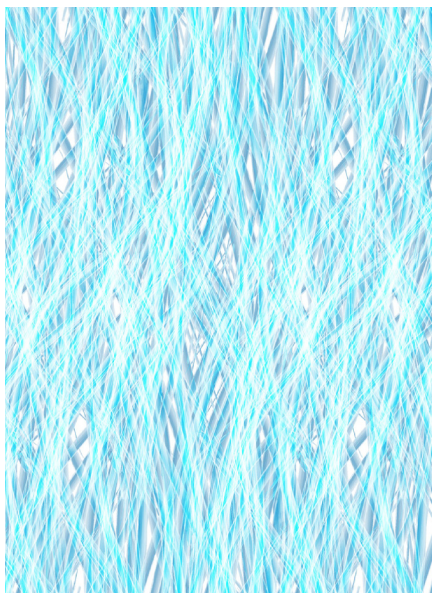
OR1102-1



OR1102-2

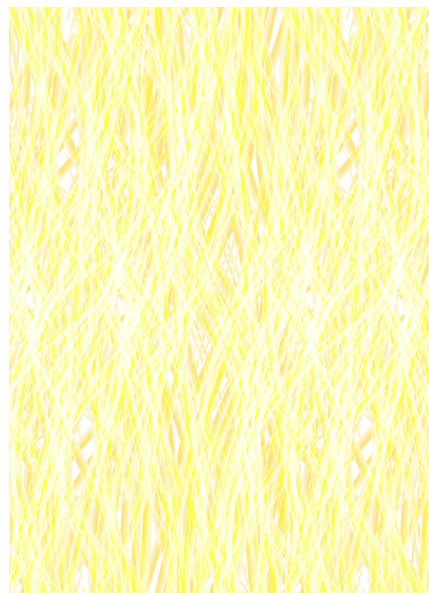
These are examples of the FIBROUS Series. You can get them in any color combination you want. Need to match a paint color or Pantone? Give us the RGB or Pantone number and we'll match it*.

*Color matching is very precisely done, but due to the nature of glass, number of glass layers, and any special filtration requirements, your glass colors may appear darker or richer than your paper sample. For this reason, we always recommend including samples in the design process.



OR1103-1

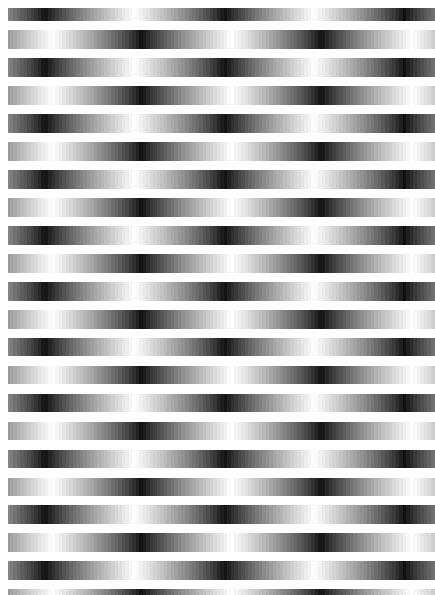
FIBROUS SERIES



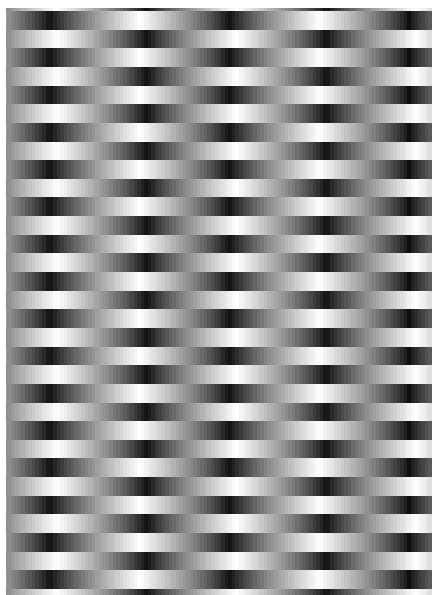
OR1103-2



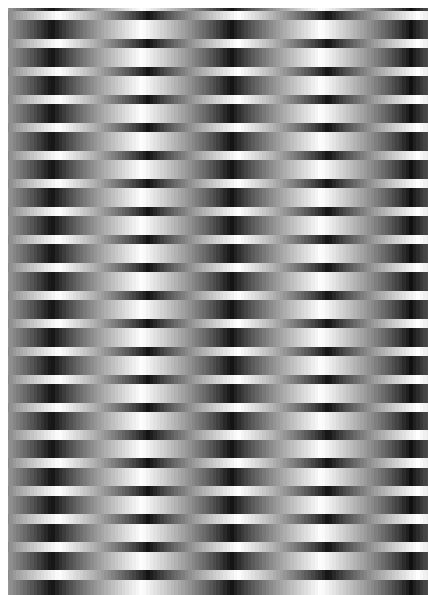
OR1103-4



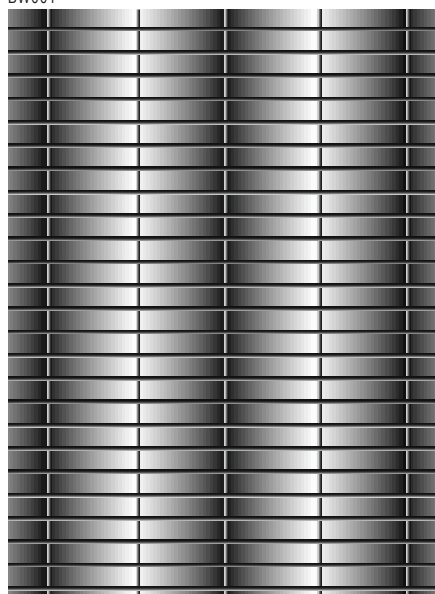
BW001



BW002

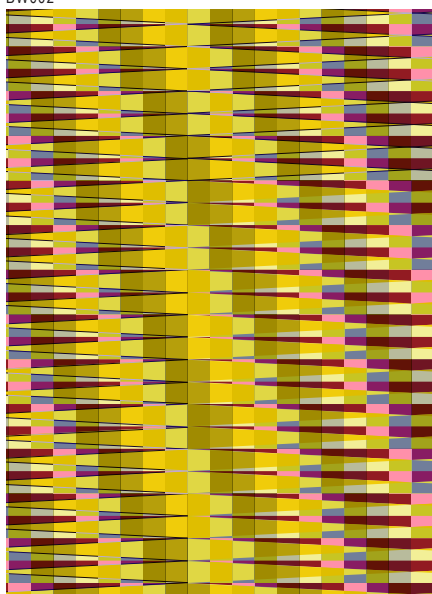


BW003



BW004

BASKET WEAVE SERIES

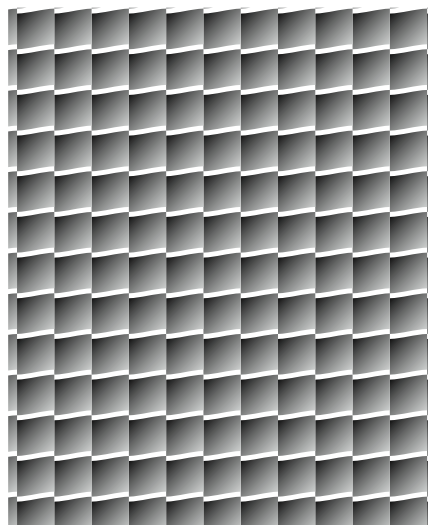


BW005 (Shown colorized)

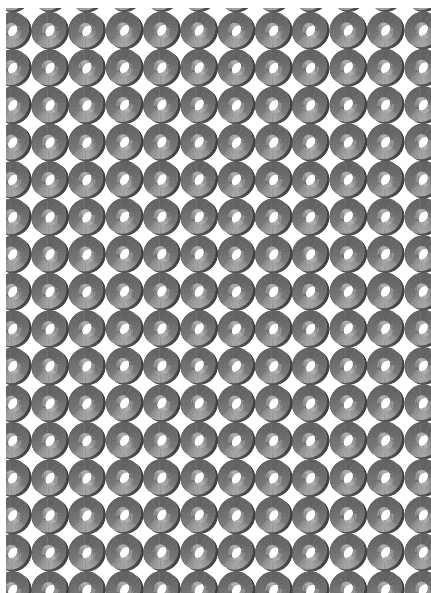
These are examples rendered in grayscale. You can get them in any color combination you want. Need to match a paint color or Pantone? Give us the RGB or Pantone number and we'll match it*.

*Color matching is very precisely done, but due to the nature of glass, number of glass layers, and any special filtration requirements, your glass colors may appear darker or richer than your paper sample. For this reason, we always recommend including samples in the design process.

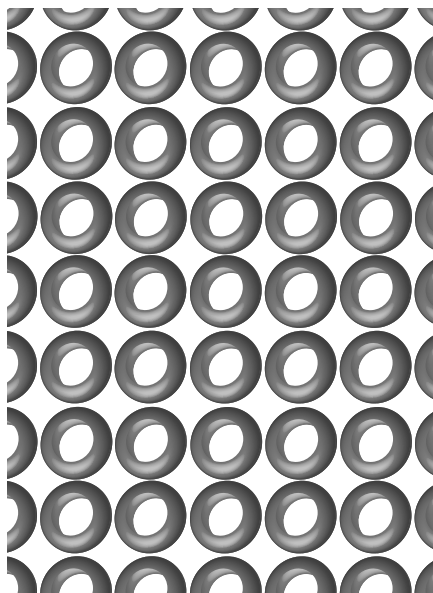
CHECKER SERIES



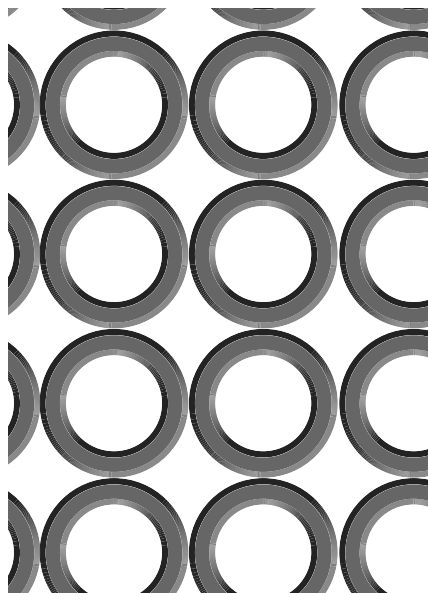
CK001



CR001



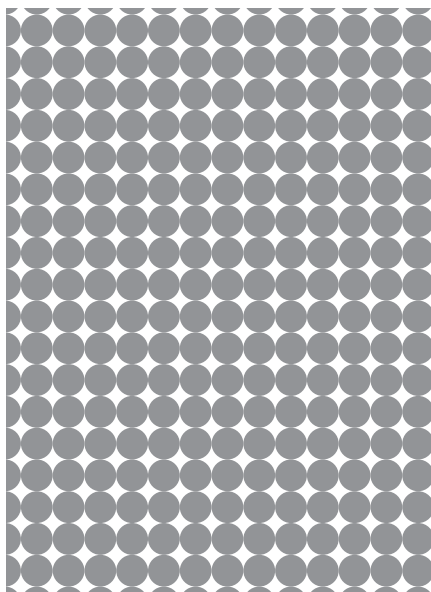
CR002



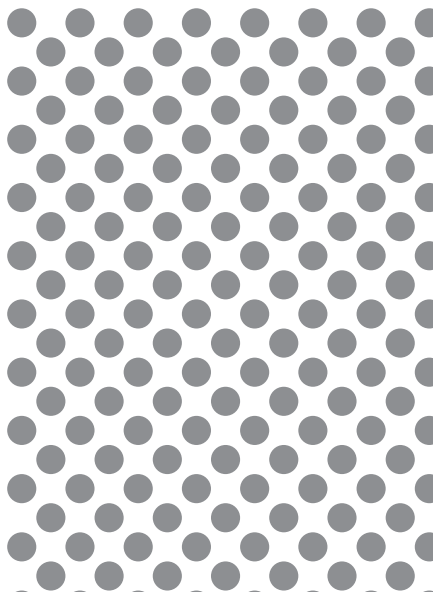
CR003

CIRCLES SERIES

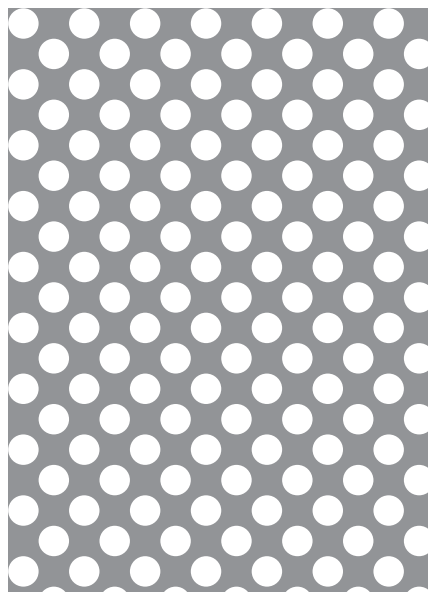
DOTS SERIES



DT001



DT002



DT003

2011
2012

Patterns in Glass



“Its knowing how to capitalize on what we do best, and tap into the experience and expertise in others for what they do best.”

We are very proud to present our
Specialty Interiors Products

How can an architectural art glass company be so diversified as to be making so many other products?

Glass should be enough for us, but its not. As New Media art is our design driver for our art glass, we came to see art-based manufacturing as unlimited. Its knowing how to capitalize on what we do best, and tap into the experience and expertise in others for what they do best. liquidoranges began as an “art studio” producing computer generated works for Giclee’ output. Some of these works captured the attention of designers who came to us asking if we could do this or that, based on an artwork. We couldn’t find a reason why we couldn’t do it, and the Specialty Interiors Products division was born.

Ahead, you’ll find what we’ve done so far. Maybe you will see where we might go next and discuss it with us. We can tell you there are things so new we just can’t put them in this catalog yet, but believe us when we say, “stay tuned.”

2011
2012

Rug design is one of those truly personal journeys that requires collaboration, interpretation and patience. Our rug work is a departure from technology from the moment the artwork is completed and sent to the maker. There begins a different world of hand work, study, craft and skill. Machines are left behind and the eye and hands of the artisan take control.

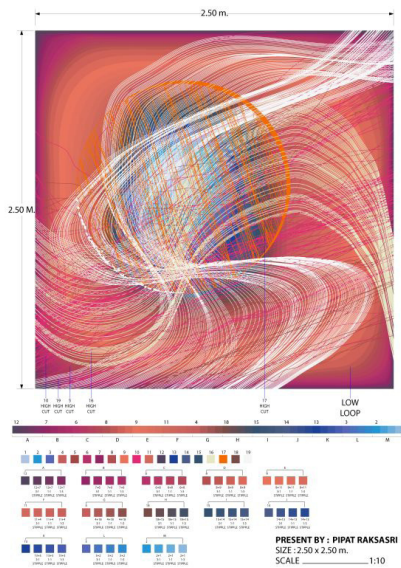
This is a passion of ours.



A highly skilled craftsman compares our design to the 111600 rug, interpreting the flow of colors and tones.

Specialty Interiors Products

DIVISION
12



How we work with our manufacturer.



Computer visualizations can be provided to assist in the decision process.



111600 Design in NZ wool and pure silk. Premiered in Dubai, UAE 2009

2011
2012

Specialty Interiors Products

Beautiful Hand Tufted Rugs and carpets:

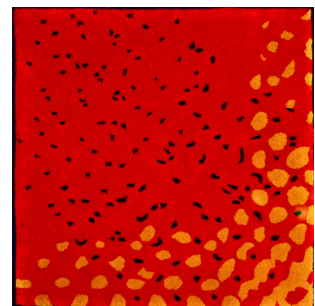
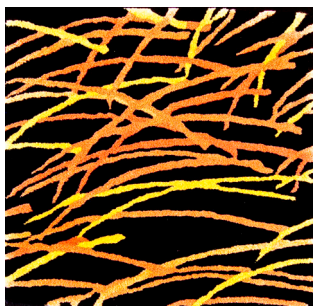
liquidoranges works through one of the very best rug makers in the world, based out of the Netherlands. The maker is fourth-generation head of the families 130-year old company. Their experience in rugs for palaces and yachts around the world brings superb quality and hand craftsmanship.

When we set out to create a rug for a client, we follow a detailed process of artwork, rug-maker interpretation, strike-offs for approval and finally manufacturing. These rugs generally take 12 - 16 weeks to complete once begun, and are shipped to our office for final inspection prior to delivery.

The materials we specify are pure New Zealand wool, pure Chinese silk, synthetics, or combinations depending upon the design criteria, aesthetics involved, etc. Pricing is lower for synthetics and highest for pure silks. There is really NO limitation on size, as we can produce wall-to-wall carpet just as easily as area rugs. Our manufacturer can produce 50' lengths, and for larger rugs, they make sections which are hand stitched together upon arrival during installation.

How to Order:

Contact us with your size and desired material choices. We'll discuss the artwork direction, colors, etc., with you. A quote will be prepared for your review, with the option to proceed.



DIVISION

12

2011
2012

We all enjoy a finely prepared meal. The culinary artist works to create amazingly delicious, visually appealing, and aeromatically inviting dishes for our pleasure and enjoyment. Some may prefer the dish to be the blank canvas for plating. We think art should be celebrated with art.

Enjoy our works in fine bone china.

Specialty Interiors Products



A highly skilled craftsman has just finished applying the transfer to a bone china dinner plate.

DIVISION

12



111600



022105-1



120308a



022105-9

Fine Bone China:

Hospitality inspired, our tableware is produced using the transfer method, taking our artwork and creating a decal which is then applied to a bone china "blank." The resulting dish is then fired in the kiln, permanently fusing our artwork to the dish forever. While the method is centuries old, our New Media art is directly produced from our artwork file, preserving color consistency and accuracy across the entire collection. And to prove our point, we produced the 022105-9 to match our rug of the same design. See for yourself the results below:



How to Order:

These are minimum quantity items. We don't inventory these, as they are produced on demand. They're economical for retail resale, hotels, restaurants, resorts, and customers who need sufficient counts to accommodate their many guests. We can not sell these as individual pieces, or small service settings. For our current six-piece place setting of one large dinner, salad, appetizer, dessert, coffee & saucer, a minimum order of 1000 of each piece is required to go to production. Contact us for pricing information.

We will create an exclusive design just for you, and can easily include branding as well.

TECHNICAL INFORMATION

Material:

1. Fine Bone China – highest grade, translucent pure white
2. Design: digital "Decalcomania" method, fired at 1500 deg F

Manufacturing:

3. Kiln fired
4. FDA CERTIFICATE – LEAD FREE
5. Dishwasher Safe
6. Manufactured to liquidoranges specifications and design by Shanghai Eastern Waves Co., Ltd., under exclusive agreement.
7. QUALITY CONTROL: liquidoranges on site at factory during production

2011
2012

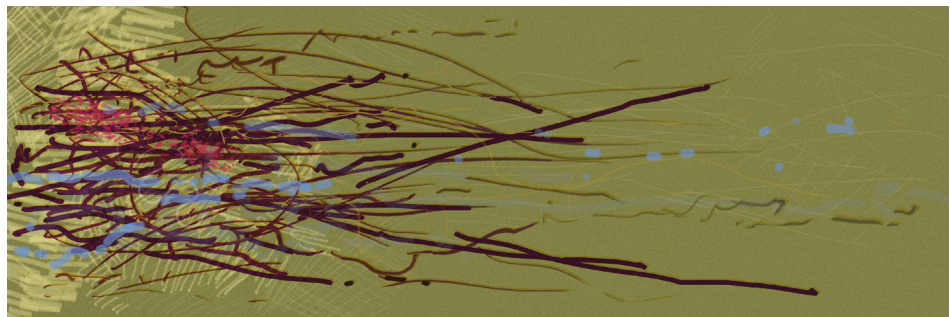
Specialty Interiors Products

DIVISION
12

2011
2012

You've reached the end of our catalog, but this is where we begin everything we produce. Over the years, the artworks of Reese Schroeder have found their way to academic collections, private collections, as well as charity contributions. The art must stand on its own merit, for arts sake. If a work survives the test of time, we may take it further as one of our Specialty products. We have revisited works years later because a client wanted that exact work in glass.

Specialty Interiors Products



020210



020210 Interpreted as individual glass panels in a lobby

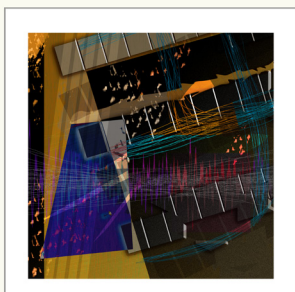
DIVISION
12



010908

2011

2012



Inspired by the technologies that support modern living, this work explores the dark-room data center of computers, servers, wires and cables, humming along without a thought of its own, but filled with the thoughts of those who dream to click, swipe, scroll, and make life happen.

Limited Edition Giclee' on watercolor paper, unframed, signed and numbered.

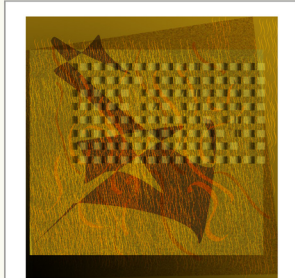
Actual image size is 30" x 30"

\$1,000.00

Framing as shown, add \$375

Other sizes available, please inquire.

031202



Understanding the square as a perfect geometric form, this work decomposes the mathematical ratio and looks into the essence of what lives within its confines. Highly detailed line work and three-dimensional overlay takes this form and celebrates its purity.

Limited Edition Giclee' on watercolor paper, unframed, signed and numbered.

Actual image size is 30" x 30"

\$1,000.00

Framing as shown, add \$375

Other sizes available, please inquire.

073001



A non-objectivism departure from the rigidity of the electronic form driver, technologies can indeed be emotionally fluid and etherial in their presentation. This work very much resembles a human watercolor painting. The first printing hangs at a prominent global law firm office.

Limited Edition Giclee' on watercolor paper, unframed, signed and numbered.

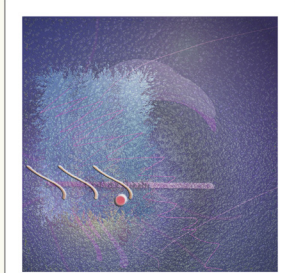
Actual image size is 30" x 30"

\$1,000.00

Framing as shown, add \$375

Other sizes available, please inquire.

090300



An older work created in 2000, this piece looks down upon the water's surface from 30,000 feet up, imagining the thoughts of birds flying in their formations far below.

Limited Edition Giclee' on watercolor paper, unframed, signed and numbered.

Actual image size is 20" x 20"

\$750.00

Framing as shown, add \$300

Other sizes may available, please inquire.

DIVISION

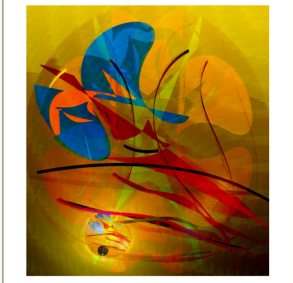
12



111600

2011

2012



The artwork that started the liquidoranges concept in 2000, this piece is all about energy and the life-force within all of us. While perhaps chaotic on the surface, the underlying order of light brings calm inspiration to those who want to know what human motivation really looks like.

Limited Edition Giclee' on watercolor paper, unframed, signed and numbered.

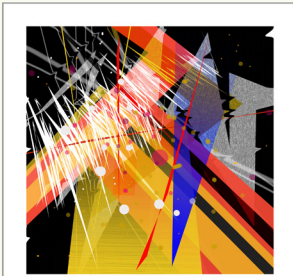
Actual image size is 30" x 30"

\$1,000.00

Framing as shown, add \$375

Other sizes available, please inquire.

082509



Fractured planes of discordant sound reach out, looking to be heard as Modern music, without objective, without representation.

Limited Edition Giclee' on watercolor paper, unframed, signed and numbered.

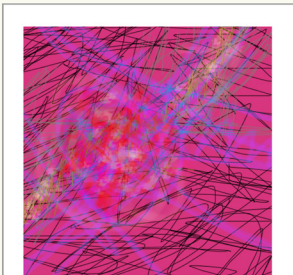
Actual image size is 30" x 30"

\$1,000.00

Framing as shown, add \$375

Other sizes available, please inquire.

022105-2



Number two in the 022105 Series of nine works, the view is asked to look directly into chaos and find their own order.

Limited Edition Giclee' on watercolor paper, unframed, signed and numbered.

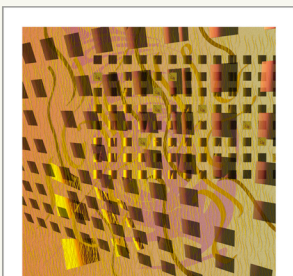
Actual image size is 30" x 30"

\$1,000.00

Framing as shown, add \$375

Other sizes available, please inquire.

031202-1



A reinterpretation of 031202 (page 26) taking the square and distorting it to reveal the true three-dimensional nature of a two-dimensional geometry.

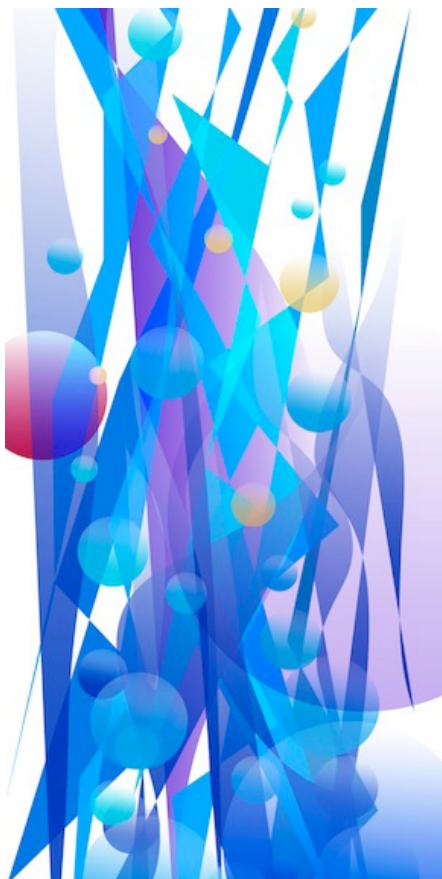
Limited Edition Giclee' on watercolor paper, unframed, signed and numbered.

Actual image size is 20" x 20"

\$750.00

Framing as shown, add \$300

Other sizes may available, please inquire.



060211

2011

2012

A recent work this year, this piece imagines the motion of water ascending towards the sunlight above. Where we might be afraid to go ourselves, here we can appreciate splendor in comfort.

Limited Edition Giclee' on watercolor paper, unframed, signed and numbered.

Actual image size is 30" x 60"

\$1,800.00

Framing not shown, add \$575

Other sizes available, please inquire.



110109

A nonobjectivist play on geometric forms as they respond to light. This work has been made into glass.

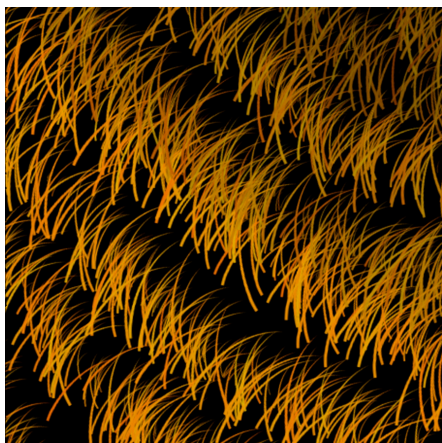
Limited Edition Giclee' on watercolor paper, unframed, signed and numbered.

Actual image size is 30" x 30"

\$1,000.00

Framing not shown, add \$375

Other sizes available, please inquire.



022105-4

DIVISION

12

Number four in the 022105 Series of nine works, a study in natural textures, as looking at a field of grass. This work was produced as a rug for a client in Amsterdam.

Limited Edition Giclee' on watercolor paper, unframed, signed and numbered.

Actual image size is 30" x 30"

\$1,000.00

Framing not shown, add \$375

Other sizes available, please inquire.





liquid



liquidoranges STUDIO
148 South Main
Sharon, MA 02067
781-248-4096
www.liquidoranges.com

Planning Your Project

Things to consider when planning your project:

2011
2012

FLOORING	VERTICAL / Horizontal non-structural (furniture tops, etc)	CEILINGS	EXTERIOR IGU
1. ALL GLASS FLOORING MUST BE REVIEWED BY A STRUCTURAL ENGINEER. The best layout is one that limits unusually shaped floor panels, such as notched (or slotted). Radius panels generally double in cost due to pre-temper cutting and alignment of three glass layers.	1. Calculate the thickness of your vertical glazing as you would monolithic glass. Check with your Building Code for safety glass requirements. We manufacture both annealed and tempered glazing meeting safety glass.	1. All ceiling panels are tempered laminated safety glass. Plan your ceiling around all physical elements, including speakers, sprinkler heads, etc.	1. Many decisions must be considered with exterior insulated glazing units (IGU). We recommend the architect specify the performance requirements of the IGU as if the interior art glass lite is clear.
2. Avoid small panel sizes less than 12"x12" if possible. If there is no choice but to have a small panel, it will most likely be non-tempered.	2. Based on your design intent to capture the glass (butt-glazed, full frame, etc) different edge finishing will be required. Butt-glazed requires polished edges.	2. It is best to avoid having holes drilled in the panels for such elements. It is possible, but potentially doubles the cost of the panel.	2. RM Global IGU's are manufactured by OldCastle BE, one of the country's premiere glass manufacturers. What ever your performance needs are, we will be able to accommodate your design.
3. Edges of floor panels do not require polishing. Panels are manufactured to 1/16" tolerance to fit tightly into supporting grid system.	3. Exposed edges MUST be polished. We include a 1/16" bevel to each edge.	3. Unlike most other types of ceilings, tempered glass panels CAN NOT be trimmed, cut or modified on site. They will destruct.	3. IGU size limits are defined by the art glass design, and the ability to hide seams between interlayer parts. A seamless panel is limited to 48" x 132". A seamed interlayer panel can exceed 48".
4. Typical floor panel design is 1.25" thick triple laminated tempered glass with the art interlayer between the bottom and middle glass layer. Panel weight is approximately 16 lbs/sf. Beyond the standard 24"x24" or 24"x48" floor panels, glass panel thickness may increase.	4. Design freely with our glass as you would with clear. We will fabricate to your hardware and installation requirements.	4. Typical 24"x24" ceiling panel weighs 13.4 lbs, or 3.35 lbs/sf. Make sure you specify a grid system rated to support the weight of the glass ceiling. Alternately, you can specify RM Global extruded aluminum narrow grid.	4. We have experience with all major curtainwall systems. We will assist in determining total IGU component thicknesses and appropriate curtainwall capture.
5. Unless otherwise specified, our floor panels include a white PVB layer under the art interlayer to mask underfloor conditions and help filter underfloor lighting.			

Project Planning - Art Glass

This specification is intended as a guide toward the preparation of a CSI 3-Part specification based on 2005 MasterFormat standards. It is only a guide. It must be reviewed and modified for specific architectural projects by a qualified specifications preparer. This specification is Proprietary to Liquidoranges STUDIO laminated art glazing. For Public Projects, this product specification may qualify under one percent Art. Confirm with appropriate authorities and/or jurisdictions governing the Project. Liquidoranges STUDIO makes no claim to the accuracy or completeness of this guide specification and shall not be held liable for any errors or omissions.

2011
2012

SECTION 08 81 13 LAMINATED ART GLAZING

PART 1 - GENERAL

1.1 SUMMARY

Edit the following paragraphs to include only those items specified in this section.

- A. Section Includes:
1. Interior laminated glass for other sections referencing this Section.

Coordinate the following paragraphs with other sections in the project manual.

- B. Related Sections:
1. Division 01: Administrative, procedural, and temporary work requirements.
 2. Division 07: Joint Sealers
 3. Division 08: Glazing accessories, installation.

1.2 REFERENCES

In the following paragraphs, retain only those reference standards that are used elsewhere in this section.

- A. American Architectural Manufacturers Association (AAMA)800 - Voluntary Specifications and Test Methods for Sealants.
- B. American National Standards Institute (ANSI)Z97.1 - Safety Performance Specifications and Methods of Test for Safety Glazing Material Used in Buildings.
- C. American Society of Civil Engineers (ASCE) 7 - Minimum Design Loads for Buildings and Other Structures.
- D. ASTM International (ASTM)
1. C1036 - Standard Specification for Flat Glass.
 2. C1172 - Standard Specification for Laminated Architectural Flat Glass.
 3. E1300 - Standard Practice for Determining Load Resistance of Glass in Buildings.
 4. F1233 - Standard Specification for Security Glazing Materials and Systems.
- E. Glass Association of North America (GANA)
1. Engineering Standards Manual.
 2. Glazing Manual.
 3. Laminated Glass Design Guide.

Include the following only if glass thicknesses are not included in the contract documents, and are to be determined by the contractor.

1.3 SYSTEM DESCRIPTION

- A. Laminated Art Glass:
1. Minimum of two layers of low-iron clear glass bonded together with polyvinyl-butryral (PVB)

Liquidoranges STUDIO
© 2010 Liquidoranges STUDIO

08 81 13-1

Laminated Art Glazing

Specifications

Download the complete Specification from our website:

2011
2012

Warranty and Support

Liquidoranges STUDIO

LIMITED WARRANTY – LAMINATED ART GLASS

Issued To:

Liquidoranges STUDIO (LO) warrants its laminated glass for a period of five (5) years from substantial date of completion against defective materials, discoloring or workmanship, which could result in de-lamination.

This Warranty does not apply to unsealed exposed edge laminates.

This Warranty does not cover art interlayer fade or color fastness.

In the event that a laminated glass unit is found to be defective, LO will replace the unit without charge, FOB nearest shipping point to the place of installation, or at LO's option refund the purchase price of the glass. If LO elects to replace the defective glass, LO will not be liable for any other expenses involved in the removal of said unit, installation of replacement unit, or any other incidental or consequential charges. Further the Warranty of the replacement glass will be limited to the remainder of the Warranty period of the original laminated glass.

LO assumes no responsibility for glass breakage, product failure due to improper usage, incompatibility with other coatings, sealants, gaskets, insulation, or any other materials; faulty installation or building construction or design, standing water or other liquids, scratches or abrasions to the product due to abnormal weather conditions, or discharge caused by cleaners, solvents, acids, or any other chemical used on or around the glass. The manufacturer reserves the right to inspect in the field, any laminated glass that is alleged to be defective.

LO makes no claims to the buyer or any third party on the design of the laminated glass. Buyer assumes all responsibility for ensuring that the product is appropriate for the intended application.

LO's Warranty will be void in the event full payment is not received for goods and services within the agreed time frame. LO's liability shall be limited solely to its responsibilities under this Warranty. In no event shall LO be liable to any person or entity for indirect, special, incidental or consequential damages or charges for any reason.

This Warranty is valid only within the United States of America.

Liquidoranges STUDIO authorized member.

Effective Date

Liquidoranges STUDIO
148 South Main St.
Sharon, MA 02067

MAIN_HD:liquidoranges:TECHNICAL:Warranty:liquidoranges_WarrantyRev01.docx

HAND-TUFTED RUGS

These rugs are made once your order and 50% deposit is received. They are completely hand made, one at a time. As such, they are exclusively custom woven for you and are not refundable. If your rug arrives damaged, we WILL absolutely make sure you get the correct rug in pristine condition. We do not keep replacements in stock, and depending upon the severity of damage, we will either, a) return your rug to the weaver to reweave the damaged area or, b) have your rug rewoven for you. Liquidoranges will solely make this decision, and any replacement to you may require the same lead-time as the original order, depending upon the circumstances. Inspect your rug immediately upon receipt.

ALL DAMAGE and/or DEFECTS MUST BE REPORTED TO liquidoranges within 5 DAYS. Repair/Replacement only. There is no refund for this product. DEPOSITS ARE NON-REFUNDABLE ONCE RUG WEAVING HAS BEGUN.

LEAD TIMES: Please allow 90 days for all sizes of these rugs to be woven, ready to be shipped. Shipping costs are NOT included and will be calculated specific to the destination. Rugs are shipped upon receipt of Final Payment + calculated shipping cost.