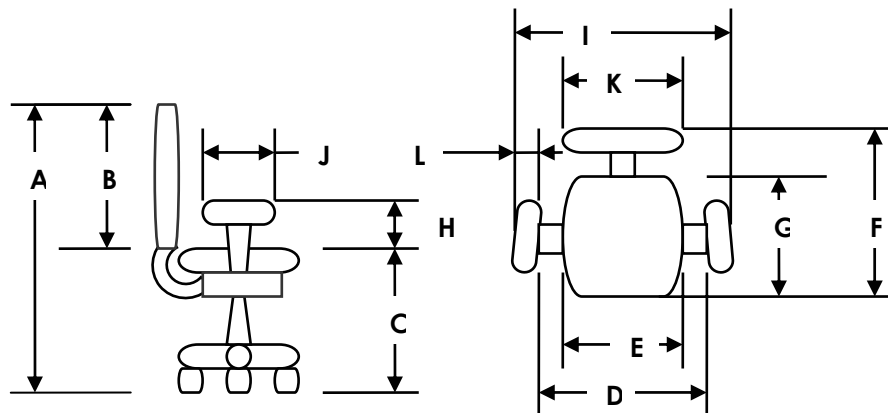




# Ultimate Executive Chair

## Standard Specifications



### Standard Specifications

### Standard Mid-Back

### Standard High-Back

|                                    |                 |                |
|------------------------------------|-----------------|----------------|
| A. Total Height                    | 41" - 46"       | 48.5 - 53.5"   |
| B. Back Height                     | 23" - 25.75"    | 30.5" - 33.25" |
| C. Seat Height                     | 19" - 21.5"     | 19" - 21.5"    |
| D. Width Between Arm Pads          | 17" - 21"       | 17" - 21"      |
| E. Seat Width                      | 21"             | 21"            |
| F. Total Depth                     | 23.75" - 25.75" | 23.75"-25.75"  |
| G. Seat Depth                      | 20"             | 20"            |
| H. Arm Pad Height from top of seat | 6" - 10"        | 6" - 10"       |
| I. Total Width                     | 25.5" - 29.5"   | 25.5" - 29.5"  |
| J. Arm Pad Length                  | 11.5"           | 11.5"          |
| K. Back Width                      | 21"             | 21"            |
| L. Arm Pad Width                   | 4.5"            | 4.5"           |

**Weight Limit:** 350 lbs.

### Standard Construction

**Back Frame:** 20% bio-based molded glass reinforced rigid urethane

**Seat Frame:** 10 ply curved plywood

**Control Mechanism:** HRPO Hot Rolled Steel meets or exceeds ANSI/BIFMA, BS5459 PART 2 (formerly FIRA) and AFRDI standards

**Foam:** Temperature and pressure sensitive anti-microbial memory foam, meets CAL 117 fire standards

**Arms:** Injection-molded glass reinforced nylon resin with steel inset

**Gas lift:** 400 Newton Force, 2 3/4" travel, meets/exceeds ANSI/BIFMA requirements

**Five Star Base:** Patented, solid injection-molded glass reinforced nylon resin with die cast metal bushing and beveled "step" inside the hub, meets/exceeds ANSI/BIFMA standards

**Casters:** Twin wheel all nylon construction, steel axle and fastening, meets/exceeds ANSI/BIFMA standards. Optional urethane wheels for hard floors.