

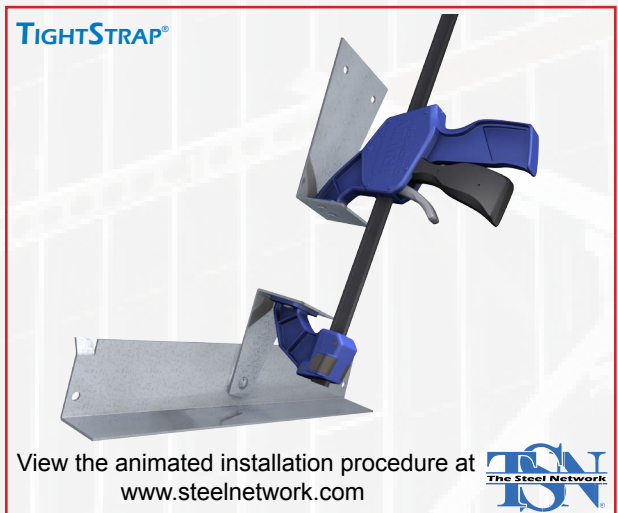
## PRODUCT DESCRIPTION

TightStrap® is a unique device used to tension (tighten) flat strap in the field. Use TightStrap® to improve structural performance of a shear wall by removing "waviness" or "bowing" prior to fastening.

The pre-tensioning of a shear wall flat strap provides a means to ensure the shear wall will perform as designed. It is important that the flat straps are as tight as possible when installed to achieve optimal system performance.

TightStrap® is designed to be used in both StiffWall® and generic flat strap shear walls. TightStrap's Track Connector fastens to standard track at the corners of the shear wall to provide a base for the tensioning process (see Step 2 below). Follow the complete instructions below for proper TightStrap® installation.

It is preferable to tighten the flat straps after applying some vertical load (own weight) on top of the shear wall panel.

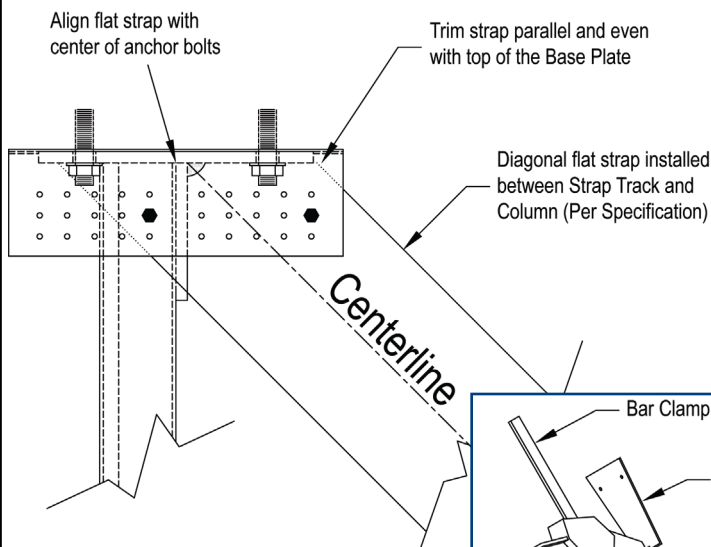


View the animated installation procedure at [www.steelnetwork.com](http://www.steelnetwork.com)

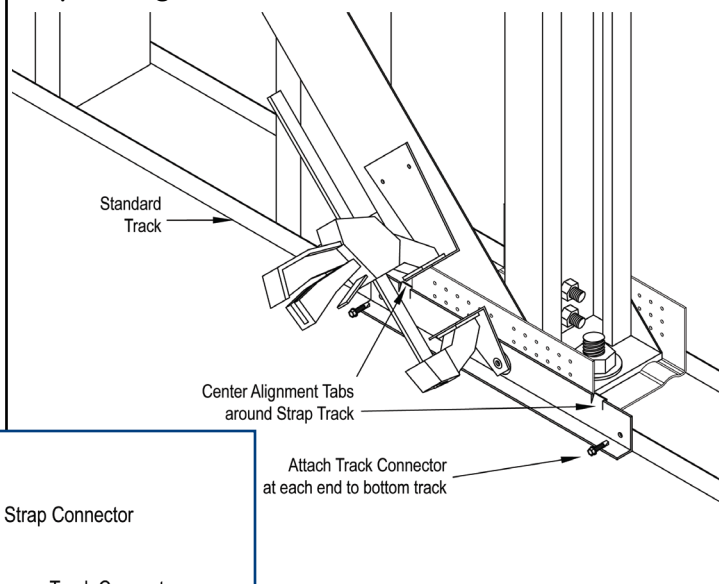


## INSTALLATION PROCEDURE

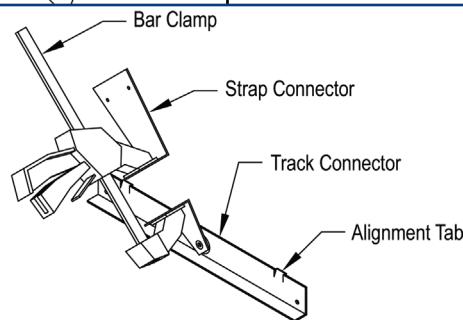
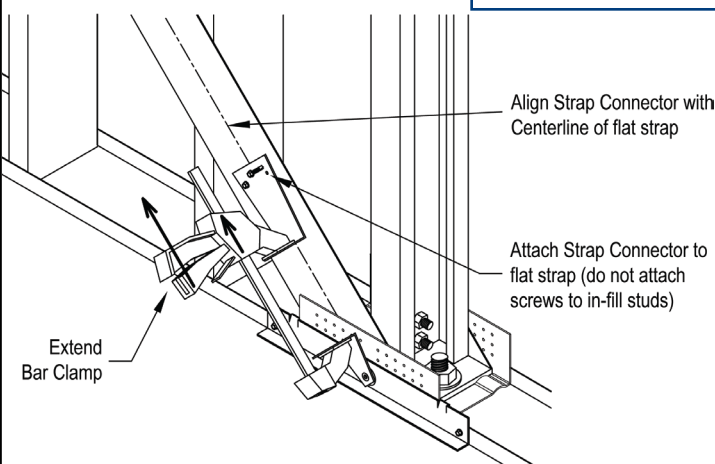
### Step 1 - Align & trim flat strap at each corner, attach one end with at least 2 screws.



### Step 2 - Align Track Connector and attach to track.



### Step 3 - Extend Bar Clamp, align Strap Connector with centerline of flat strap and attach Strap Connector to the flat strap.



### Step 4 - Engage Bar Clamp, install at least 2 screws for flat strap attachment, remove TightStrap® and install remaining screws for strap attachment.

