



Jewel Cave



342 Citrine  
16-1324 TPX, 13-1009 TPX



368 Topaz  
16-1212 TPX, 14-1110 TPX



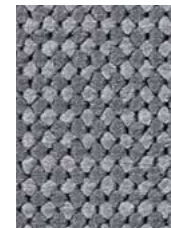
428 Peridot  
17-0610 TPX, 13-1006 TPX



488 Olivine  
18-0312 TPX, 17-1009 TPX



569 Sapphire  
19-4118 TPX, 18-0403 TPX



755 Zircon  
18-0601 TPX, 16-3802 TPX



789 Moonstone  
18-0403 TPX, 18-0601 TPX



831 Smoky Quartz  
16-1210 TPX, 13-0908 TPX



844 Jasper  
17-1009 TPX, 14-1108 TPX

PRODUCT SPECIFICATIONS

Style Name ..... Jewel Cave  
 Product Type ..... Broadloom  
 Construction ..... Woven  
 Surface Appearance ..... Level Heathered Loop  
 Nylon Type ..... Colorstrand® SD Nylon  
 Pile Weight ..... 23.0 oz. per sq. yd. (780 g/m<sup>2</sup>)  
 Pile Thickness ..... .105" (2.67 mm)  
 Dye Method ..... Solution Dyed  
 Protective Treatment ..... Sentry Plus  
 Density ..... 7,886  
 Weight Density ..... 181,378  
 Primary Backing ..... Not Applicable  
 Backing Foundation ..... Interlaced Into Pile  
 Secondary Backing ..... None

Pattern Repeat ..... .50" (W) x .44" (L)  
 Width ..... 12' (3.66 m)  
 Flammability ..... ASTM E 648 Class 1 (Glue Down)  
 Smoke Density ..... ASTM E 662 Less than 450  
 Static Propensity ..... AATCC-134 Under 3.5 KV  
 IAQ Green Label Plus..... 3802  
 CRI Rating ..... Severe Traffic  
 Pitch ..... 216 (315 ends per meter)  
 RPI ..... 9.5 (37.40 per 10 cm)  
 Warranties: Lifetime Limited Woven Wear Warranty, 10 Year Stain  
 Warranty, Lifetime Static