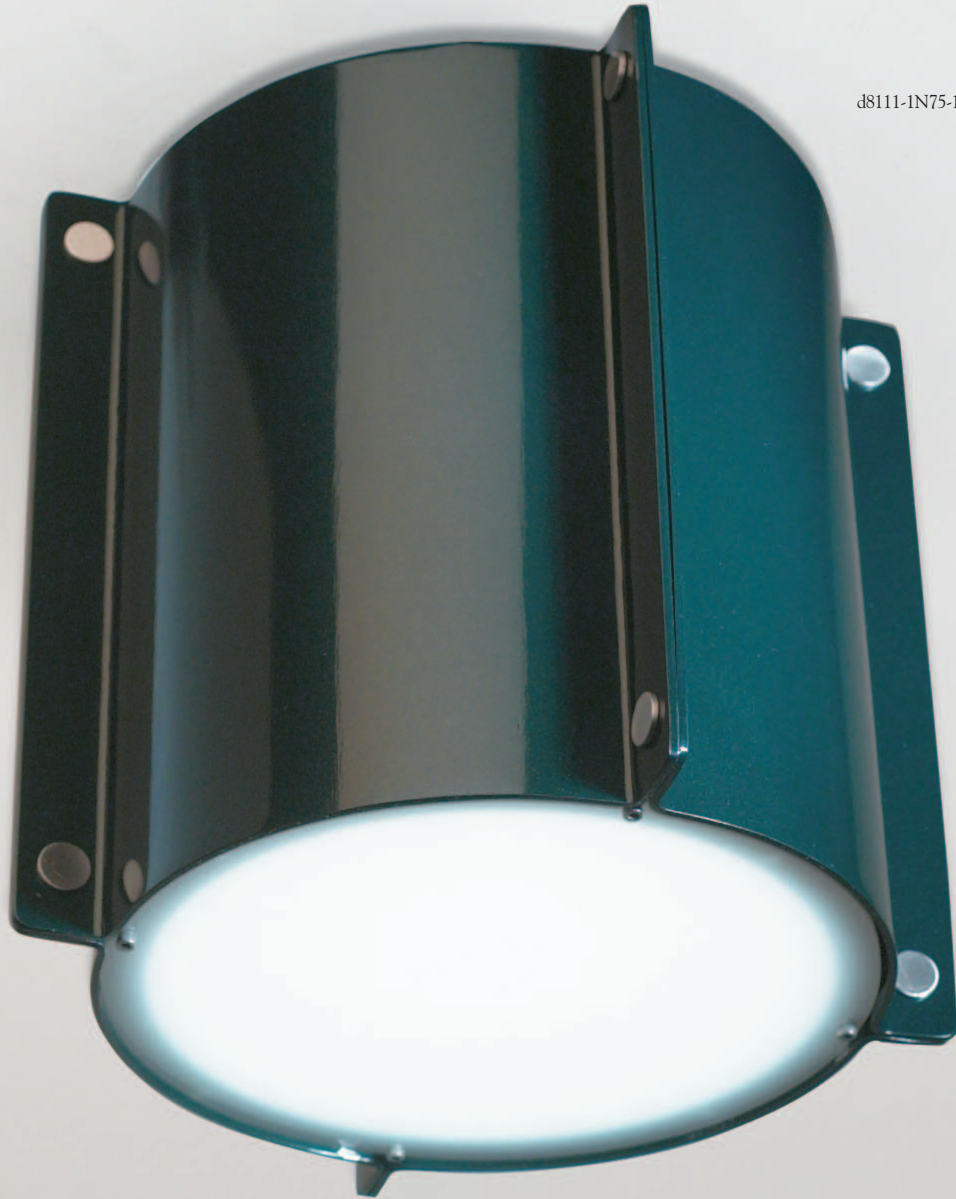




d8110 MERIDIAN 9 1/4 3" ceiling/wall fixture ADA
d8111 MERIDIAN 9 1/4 8" ceiling/wall fixture
d8112 MERIDIAN 16 3/4 3" ceiling/wall fixture ADA
d8113 MERIDIAN 16 3/4 8" ceiling/wall fixture

d8110, d8112
d8111, d8113

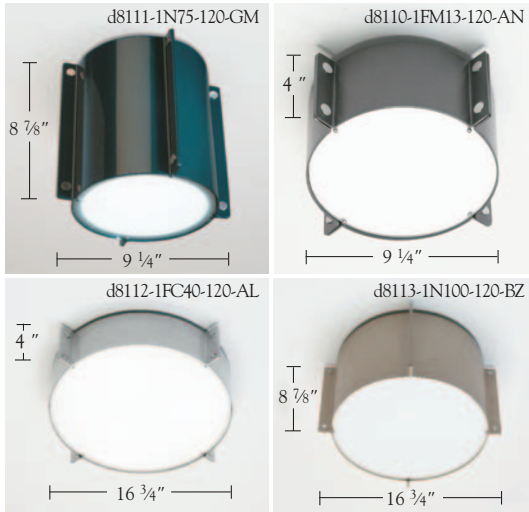
Peter Wooding Design Associates design



d8111-IN75-120-GM



d8110, d8112 d8111, d8113



| Item # | Lamping | Voltage | Shade Finishes | Sp. Orders |
|----------------------|----------------------|----------------------|----------------------|----------------------|
| <input type="text"/> | <input type="text"/> | <input type="text"/> | <input type="text"/> | <input type="text"/> |

Work space for submittals

How to specify

Example from illustration at left

| | | | | |
|-------|--------|------|-----|----------------------|
| d8110 | -1FM13 | -120 | -AN | <input type="text"/> |
|-------|--------|------|-----|----------------------|

Item Number

d8110
d8111
d8112
d8113

MERIDIAN 9" 3" ceiling/wall fixture **ADA**
MERIDIAN 9" 8" ceiling/wall fixture
MERIDIAN 16" 3" ceiling/wall fixture **ADA**
MERIDIAN 16" 8" ceiling/wall fixture
Peter Wooding Design Associates

Construction

Aluminum shade. White opal, acrylic bottom lens.
Brushed aluminum buttons. For standard ceiling junction box mounting. UL listed, cUL certified for dry locations.

Lamping / Wattage

| | |
|-----------|----------|
| For d8110 | 2C25 |
| | 1FM13 |
| | 1N75 |
| For d8111 | 1F13 |
| | 1F18 |
| | 1F26 |
| | 3C25 |
| For d8112 | 1FC40 |
| | 2FC22/40 |
| | 1N100 |
| For d8113 | 2F13 |
| | 2F18 |
| | 2F26 |

Incandescent, two 25 W, candelabra base, B-10 type
Fluorescent, one 13W quad, 2 pin, electromagnetic NPF ballast
Incandescent, one 75 W, medium base, A type
Fluorescent, one 13W quad, 4 pin, electronic HPF ballast
Fluorescent, one 18W quad, 4 pin, electronic HPF ballast
Fluorescent, one 26W triple tube, 4 pin, electronic HPF ballast
Incandescent, three 25 W, candelabra base, B-10 type
Fluorescent, one 40W Circline, T5 type, 2GX13 base, electronic HPF ballast
Fluorescent, one 22W and one 40W Circline, T5 type, 2GX13 base, electronic HPF ballast
Incandescent, one 100 W, medium base, A type
Fluorescent, two 13W quad, 4 pin, electronic HPF ballast
Fluorescent, two 18W quad, 4 pin, electronic HPF ballast
Fluorescent, two 26W triple tube, 4 pin, electronic HPF ballast
All fixtures are supplied less lamps. Lamps may be ordered from d'ac.

Voltage

120 120V 277 277V

Shade Finishes

| | | |
|----------------------------|--|---------------------------|
| AL Brushed Aluminum | G1 Light Grey | G2 Medium Grey |
| WH White Gloss | AN Metallic Anthracite | BG Black Gloss |
| MG Metallic Grey | BC Black Crinkle | CU Metallic Copper |
| MB Matte Black | T1 Light Tan | T2 Medium Tan |
| BZ Metallic Bronze | SF Seafoam | BL Metallic Blue |
| GM Metallic Green | RB Bright Red | MP Magenta Pink |
| RD Metallic Red | OR Orange | |
| YL Bright Yellow | SCF Special Finish—must supply paint chip | |

Special Orders

For modifications to dimensions, electrical requirements and other special orders, please contact your d'ac representative.

