

Social Studies / Maha GlasBac® RE Tile

Style#: 19BH4

Color#: 178143

Carpet Type: Tile

Standard Size: 50 cm x 50 cm (19.69 in x 19.69 in)

Backing Options: GlasBac® RE Tile (50 cm x 50 cm), GlasBac® Tile (50 cm x 50 cm)

Layout Options:



Specifications for GlasBac® RE Tile

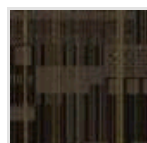
Product Number:	19BH4178143
Product Construction:	Tufted Textured Loop
Soil/Stain Protection:	Protekt®
Antimicrobial Treatment:	(AATCC 138 Washed) (AATCC 174 Parts 2&3) Intersept®
Yarn System:	Post-Consumer Content Type 6,6 Nylon
Yarn Manufacturer:	Universal
Dye Method:	100% Solution Dye
Post-Industrial:	34% - 34%
Post-Consumer:	31%
Total Recycled Content:	65% - 65%

Product Specifications	U.S.	Metric
Tufted Yarn Weight:	18 oz/yd ²	610 g/m ²
Machine Gauge:	1/12 in	47.2 ends/10 cm
Pile Height:	.15 in	3.8 mm
Pile Thickness:	.103	2.6
Stitches:	10/in	39.37 ends/10cm
Pile Density:	6291	
Size:	19.69 in x 19.69 in	50 cm x 50 cm

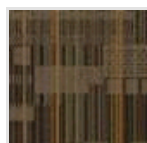
Performance Specifications

Indoor Air Quality:	Green Label Plus Certified #GLP0820
Sustainable Carpet Assessment Standard:	NSF-140 Platinum
Radiant Panel:	(ASTM E-648) Class 1
Smoke Density:	(ASTM E - 662)
Lightfastness:	(AATCC 16 - E)
Static:	(AATCC - 134) < 3.0 KV

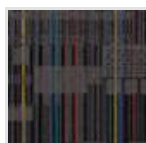
Other Colors for Social Studies



Newbie
Color#: 178144



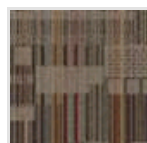
Imp
Color#: 178145



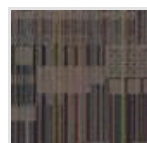
Imprized
Color#: 178146



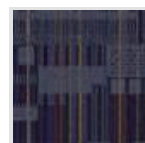
Chillaxin
Color#: 178147



Tizzy
Color#: 178148



Schmick
Color#: 178149



Stoked
Color#: 178150

All Product Specifications are averages derived from product sample testing and are subject to normal manufacturing tolerances and testing tolerances. "Tufted Yarn Weight" refers to total input weight of yarn used in tufting process, and processes such as tufting and shearing will result in a lower finished yarn weight in purchased carpet. Pile Density stated in the Product Specifications is based on the Tufted Yarn Weight. Product Specifications may be changed without notice as long as product performance is not materially affected.