

Sew Retro / Midnight/Dove GlasBac® RE Tile

Style#: 12329

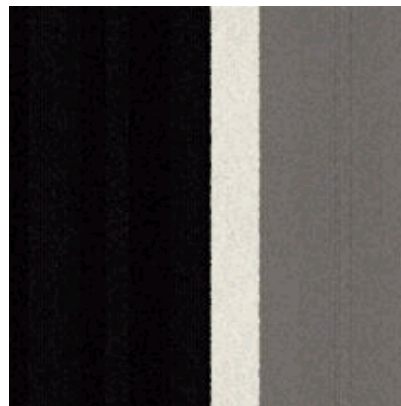
Color#: 9019

Carpet Type: Tile

Standard Size: 50 cm x 50 cm (19.69 in x 19.69 in)

Backing Options: GlasBac® RE Tile (50 cm x 50 cm)

Layout Options:



Specifications for GlasBac® RE Tile

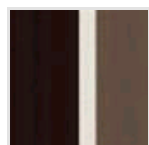
Product Number:	123299019
Product Construction:	Tufted Cut & Loop
Soil/Stain Protection:	Protekt®
Antimicrobial Treatment:	(AATCC 138 Washed) (AATCC 174 Parts 2&3) Intersept®
Yarn System:	Post-Consumer Content Type 6,6 Nylon
Yarn Manufacturer:	Universal
Dye Method:	100% Solution Dyed
Post-Industrial:	40% - 40%
Post-Consumer:	26%
Total Recycled Content:	66% - 66%

Product Specifications	U.S.	Metric
Tufted Yarn Weight:	24 oz/yd ²	814 g/m ²
Machine Gauge:	5/64 in	50.4 ends/10 cm
Pile Height:	.18 in	4.6 mm
Pile Thickness:	.145	3.7
Stitches:	11.83/in	46.57471 ends/10cm
Pile Density:	5959	
Size:	19.69 in x 19.69 in	50 cm x 50 cm

Performance Specifications

Indoor Air Quality:	Green Label Plus Certified #GLP0820
Sustainable Carpet Assessment Standard:	NSF-140 Platinum
Radiant Panel:	(ASTM E-648) Class 1
Smoke Density:	(ASTM E - 662)
Lightfastness:	(AATCC 16 - E)
Static:	(AATCC - 134) < 3.0 KV

Other Colors for Sew Retro



Espresso/Spice
Color#: 9020



Shadow/Pink
Color#: 9021



Olive/Bamboo
Color#: 9022



Espresso/Gold
Color#: 9023



Coffee/Mandarin
Color#: 9024

All Product Specifications are averages derived from product sample testing and are subject to normal manufacturing tolerances and testing tolerances. "Tufted Yarn Weight" refers to total input weight of yarn used in tufting process, and processes such as tufting and shearing will result in a lower finished yarn weight in purchased carpet. Pile Density stated in the Product Specifications is based on the Tufted Yarn Weight. Product Specifications may be changed without notice as long as product performance is not materially affected.