

## Kabuki Ni / Bamboo GlasBac® Tile

**Style#:** 16640

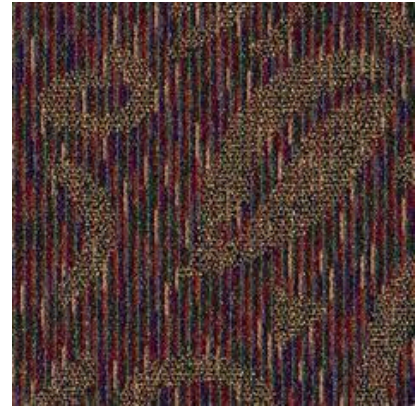
**Color#:** 2719

**Carpet Type:** Tile

**Standard Size:** 50 cm x 50 cm (19.69 in x 19.69 in)

**Backing Options:** GlasBac® RE Tile (50 cm x 50 cm), GlasBac® Tile (50 cm x 50 cm), NexStep® Tile (1 m x 1 m), NexStep® Tile (50 cm x 50 cm)

**Layout Options:**



### Specifications for GlasBac® Tile

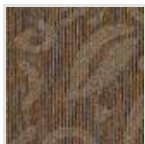
<b>Product Number:</b>	166402719
<b>Product Construction:</b>	
<b>Soil/Stain Protection:</b>	Protekt <sup>®</sup> with DuPont Duratech <sup>®</sup>
<b>Antimicrobial Treatment:</b>	(AATCC 138 Washed) (AATCC 174 Parts 2&3) Intersept <sup>®</sup>
<b>Yarn System:</b>	Type 6,6 Nylon
<b>Yarn Manufacturer:</b>	Invista <sup>®</sup>
<b>Dye Method:</b>	72% Solution Dye, 28% Yarn Dye
<b>Post-Industrial:</b>	43% - 43%
<b>Post-Consumer:</b>	0%
<b>Total Recycled Content:</b>	43% - 43%

Product Specifications	U.S.	Metric
<b>Tufted Yarn Weight:</b>	23 oz/yd <sup>2</sup>	780 g/m <sup>2</sup>
<b>Machine Gauge:</b>	1/12"	47.2 ends/10 cm
<b>Pile Height:</b>	.143 in	3.6 mm
<b>Pile Thickness:</b>	.105	2.7
<b>Stitches:</b>	8.3/in	32.6771 ends/10cm
<b>Pile Density:</b>	7886	
<b>Size:</b>	19.69 in x 19.69 in	50 cm x 50 cm

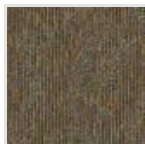
### Performance Specifications

<b>Indoor Air Quality:</b>	Green Label Plus Certified <a href="#">#GLP0820</a>
<b>Sustainable Carpet Assessment Standard:</b>	NSF-140 Gold
<b>Radiant Panel:</b>	(ASTM E-648) Class 1
<b>Smoke Density:</b>	(ASTM E - 662)
<b>Lightfastness:</b>	(AATCC 16 - E)
<b>Static:</b>	(AATCC - 134) < 3 KV

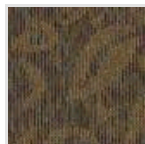
### Other Colors for Kabuki Ni



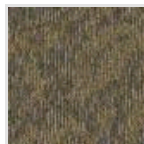
Origami  
Color#: 2720



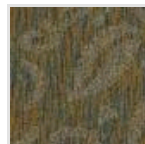
Kanji  
Color#: 2721



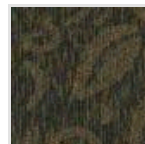
Pagoda  
Color#: 2722



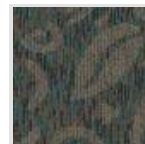
Kanto  
Color#: 2723



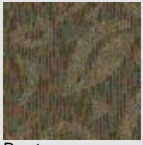
Kimono  
Color#: 2724



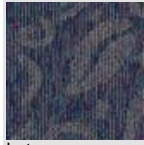
Obi  
Color#: 2725



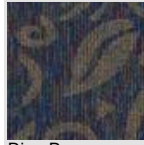
Yen  
Color#: 2726



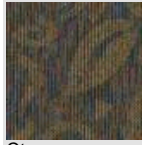
Bento  
Color#: 2727



Lotus  
Color#: 2728



Rice Paper  
Color#: 2729



Otera  
Color#: 2730

All Product Specifications are averages derived from product sample testing and are subject to normal manufacturing tolerances and testing tolerances. "Tufted Yarn Weight" refers to total input weight of yarn used in tufting process, and processes such as tufting and shearing will result in a lower finished yarn weight in purchased carpet. Pile Density stated in the Product Specifications is based on the Tufted Yarn Weight. Product Specifications may be changed without notice as long as product performance is not materially affected.