

Ginza / Okuni GlasBac® Tile

Style#: 16650

Color#: 100389

Carpet Type: Tile

Standard Size: 50 cm x 50 cm (19.69 in x 19.69 in)

Backing Options: GlasBac® RE Tile (50 cm x 50 cm), GlasBac® Tile (50 cm x 50 cm), NexStep® Tile (50 cm x 50 cm)

Layout Options:



QUARTER
TURN



Specifications for GlasBac® Tile

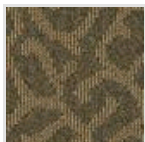
Product Number:	16650100389
Product Construction:	Tufted Textured Loop
Soil/Stain Protection:	Protekt® with Duratech®
Antimicrobial Treatment:	(AATCC 138 Washed) (AATCC 174 Parts 2&3) Intersept®
Yarn System:	Antron Lumena® Type 6,6 Nylon
Yarn Manufacturer:	Invista®
Dye Method:	100% Solution Dye
Post-Industrial:	43% - 44%
Post-Consumer:	0%
Total Recycled Content:	43% - 44%

Product Specifications	U.S.	Metric
Tufted Yarn Weight:	23 oz/yd ²	780 g/m ²
Machine Gauge:	1/12"	47.2 ends/10 cm
Pile Height:	.165 in	4.2 mm
Pile Thickness:	.131	3.3
Stitches:	8.5/in	33.4645 ends/10cm
Pile Density:	6321	
Size:	19.69 in x 19.69 in	50 cm x 50 cm

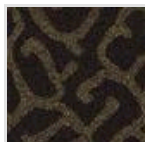
Performance Specifications

Indoor Air Quality:	Green Label Plus Certified #GLP0820
Sustainable Carpet Assessment Standard:	NSF-140 Gold
Radiant Panel:	(ASTM E - 648) Class 1
Smoke Density:	(ASTM E - 662)
Lightfastness:	(AATCC 16 - E)
Static:	(AATCC - 134) < 3.0 KV

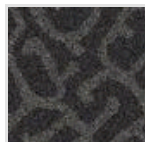
Other Colors for Ginza



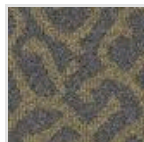
Hashi
Color#: 100390



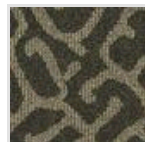
Tea Leaves
Color#: 100391



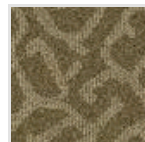
Terrace
Color#: 100392



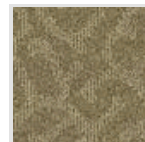
Hiaki
Color#: 100393



Bonsai
Color#: 100394



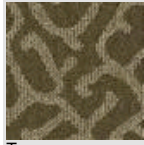
Honshu
Color#: 100395



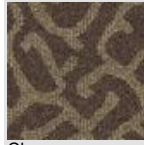
Rice Wine
Color#: 100396



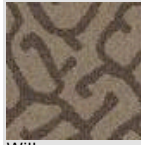
Ginko
Color#: 100397



Tomo
Color#: 100398



Cha
Color#: 100399



Willow
Color#: 100400

All Product Specifications are averages derived from product sample testing and are subject to normal manufacturing tolerances and testing tolerances. "Tufted Yarn Weight" refers to total input weight of yarn used in tufting process, and processes such as tufting and shearing will result in a lower finished yarn weight in purchased carpet. Pile Density stated in the Product Specifications is based on the Tufted Yarn Weight. Product Specifications may be changed without notice as long as product performance is not materially affected.