

Boucle Grid Classics / Ash GlasBac® Tile

Style#: 14156

Color#: 101279

Carpet Type: Tile

Standard Size: 50 cm x 50 cm (19.69 in x 19.69 in)

Backing Options: GlasBac® RE Tile (50 cm x 50 cm), GlasBac® Tile (50 cm x 50 cm), NexStep® Tile (50 cm x 50 cm), Performance Broadloom (2 m), Sheet Goods (2 m)

Layout Options:



MONOLITHIC



Specifications for GlasBac® Tile

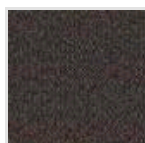
Product Number:	14156101279
Product Construction:	Tufted Textured Loop
Soil/Stain Protection:	Protekt®
Antimicrobial Treatment:	(AATCC 138 Washed) (AATCC 174 Parts 2&3) Intersept®
Yarn System:	Post-Consumer Content Type 6,6 Nylon
Yarn Manufacturer:	Universal and Invista
Dye Method:	46% Solution Dye, 54% Yarn Dye
Post-Industrial:	44% - 44%
Post-Consumer:	1%
Total Recycled Content:	45% - 45%

Product Specifications	U.S.	Metric
Tufted Yarn Weight:	24 oz/yd ²	814 g/m ²
Machine Gauge:	1/10 in	39.4 ends/10 cm
Pile Height:	.19 in	4.8 mm
Pile Thickness:	.123	3.1
Stitches:	10.33/in	40.66921 ends/10cm
Pile Density:	7024	
Size:	19.69 in x 19.69 in	50 cm x 50 cm

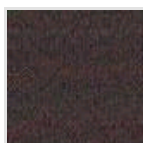
Performance Specifications

Indoor Air Quality:	Green Label Plus Certified #GLP0820
Sustainable Carpet Assessment Standard:	NSF-140 Gold
Radiant Panel:	(ASTM E-648) Class 1
Smoke Density:	(ASTM E - 662)
Lightfastness:	(AATCC 16 - E)
Static:	(AATCC - 134) < 3.0 KV

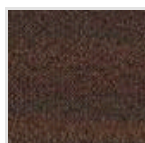
Other Colors for Boucle Grid Classics



Moonlight
Color#: 101280



Amethyst
Color#: 101281



Clove
Color#: 101282

All Product Specifications are averages derived from product sample testing and are subject to normal manufacturing tolerances and testing tolerances. "Tufted Yarn Weight" refers to total input weight of yarn used in tufting process, and processes such as tufting and shearing will result in a lower finished yarn weight in purchased carpet. Pile Density stated in the Product Specifications is based on the Tufted Yarn Weight. Product Specifications may be changed without notice as long as product performance is not materially affected.