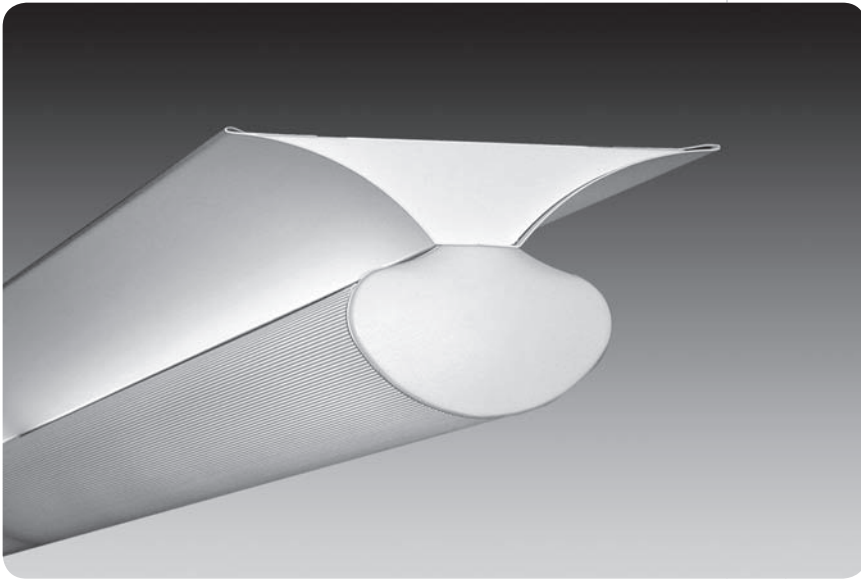


softlite™ IV



features

Suspended direct luminaire with Matte Satin White reflector and perforated lamp shield.

Two-piece sculpted end caps are removable to allow for continuous mounting of multiple luminaires.

Reflectors provide indirect quality of light.

Great choice for lighting library stacks, conference rooms and large open spaces.

shielding options



perforated

radial blade louver

continuous row mount

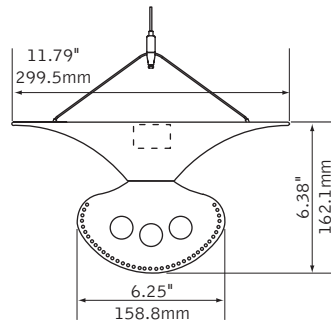
companion luminaire



recessed

sconce

dimensional data

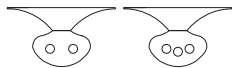


lamping options



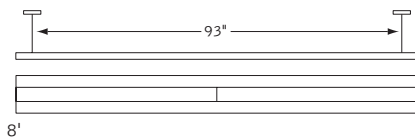
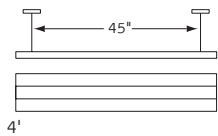
T5 LAMPS

T5HO LAMPS



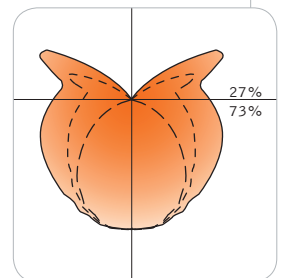
T8 LAMPS

fixture information



performance

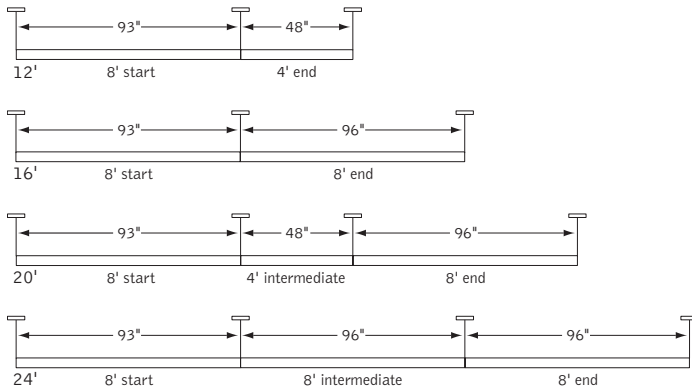
Perforated Lamp Shield
2-Lamp T8
79% Efficiency
890 cd @ 5°



Visit focalpointlights.com for complete photometric data.

fixture:
project:

suspension information



Consult factory for additional row length information.

specifications

construction

One-piece 20 Ga. steel housing.
Die-cast aluminum end caps complete shield assembly.
For row installation, internal brackets form hairline joint.
Standard lengths are available in 48" and 96".
All luminaires are provided with Y-cable suspension.

4' unit weight: 19 lbs.
8' unit weight: 38 lbs.

optic

One-piece 20 Ga. steel reflectors finished in Matte Satin White powder coat.
22 Ga. steel perforated lamp shield with white acrylic insert.
Optional radial blade louver, .75"H x 1" frequency blade spacing.

electrical

Luminaires are pre-wired with factory installed branch circuit wiring with over-molded quick connects.
Factory installed SJT power cord at feed location is included.
Electronic ballasts are thermally protected and have a Class "P" rating.
Optional dimming ballasts available.
UL and cUL listed.

finish

Polyester powder coat applied over a 5-stage pretreatment.
Canopy finished in Matte Satin White.

ordering

luminaire series	FS4S
Softlite IV Suspended	FS4S
shielding	_____
Perforated Shield	PS
Radial Blade Louver	RLP
lamping	_____
2 Lamp T5	2T5
3 Lamp T5	3T5
1 Lamp T5H0	1T5H0
2 Lamp T5H0	2T5H0
3 Lamp T5H0	3T5H0
2 Lamp T8	2T8
3 Lamp T8	3T8
circuit	_____
Single Circuit	1C
Dual Circuit	2C
(Multiple lamp luminaires only)	
voltage	_____
120 Volt	120
277 Volt	277
347 Volt	347
ballast	_____
Electronic Instant Start <20% THD (T8 only)	E
Electronic Program Start <10% THD	S
Electronic Dimming Ballast*	D
mounting	_____
24" Cable Suspension	C24
48" Cable Suspension	C48
96" Cable Suspension	C96
(Specify "J" in place of "C" for 5" dia. canopies at power feed and 2" dia canopies at non-feed locations) (Consult factory for sloped ceiling applications)	
factory options	_____
Emergency Circuit*	EC
Emergency Battery Pack*	EM
HLR/GLR Fuse	FU
Include 3500K Lamp	L830
Include 3000K Lamp	L835
Include 4100K Lamp	L841
finish	WH
Matte Satin White	WH
luminaire length	_____
4'	4
8'	8'
12' (8' + 4')	12'
16' (8' + 8')	16'
20' (8' + 4' + 8')	20'
24' (8' + 8' + 8')	24'

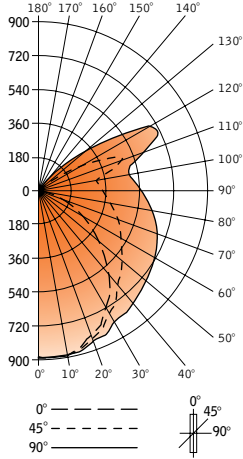
* for more information see Reference section.

softlite™ IV



Filename: FS4SPS2T8.IES
 Catalog #: FS4S-PS-2T8-1C-120-E-CXX-WH-4'
 Efficiency: 79%
 Test #: 11996.0

CANDLEPOWER DISTRIBUTION



Spacing 1.2
 Criterion: 1.4

Vertical Angle	Horizontal Angle				Zonal Lumens
	0°	22.5°	45°	67.5°	
0°	879	879	879	879	879
5°	888	887	888	890	890
15°	860	861	868	878	881
25°	785	788	811	834	846
35°	666	680	720	774	805
45°	505	531	617	718	762
55°	350	392	545	680	739
65°	196	281	479	638	700
75°	93	211	427	584	648
85°	22	167	360	515	577
90°	3	150	342	491	551
95°	13	135	319	461	517
105°	24	166	407	481	510
115°	21	39	381	662	712
125°	19	26	144	328	476
135°	0	15	30	144	187
145°	0	0	0	11	19
155°	0	0	0	0	0
165°	0	0	0	0	0
175°	0	0	0	0	0
180°	0	0	0	0	0

LUMEN SUMMARY

	Zone Lumens	% Lamp	% Fixt
0°-30°	707	12.0	15.3
0°-90°	3375	57.2	72.9
90°-130°	1198	20.3	25.9
90°-180°	1256	21.3	27.1
Total Luminaire	4631	79	100.0

LUMINANCE DATA (CD/M²)

Vertical Angle	0°	45°	90°
45°	1937	1547	1911
55°	1655	1467	1989
65°	1258	1439	2103
75°	975	1503	2281
85°	685	1588	2545

CO-EFFICIENTS OF UTILIZATION

Floor	80			70			20							
Ceiling	70	50	30	10	70	50	10	50	10	30	10	00		
Wall	70	50	30	10	70	50	10	50	10	50	10	00		
RCR 0	88	88	88	88	84	84	84	75	75	68	68	61	61	57
1														
2	79	74	70	66	74	70	63	63	58	56	52	50	47	44
3														
4	71	64	58	53	67	60	50	54	46	48	42	43	38	35
5														
6	64	56	49	43	60	53	42	47	38	42	35	38	32	29
7														
8	59	49	42	36	55	46	35	42	32	37	29	33	27	24
9														
10	53	43	36	30	50	41	29	37	27	33	25	29	23	20

Numbers indicate percentage values of

Go to www.focalpointlights.com for additional photometric data.