

surface mount
softlite™ I



features

Surface mounted direct/indirect with Matte Satin White reflector and perforated lamp shield.

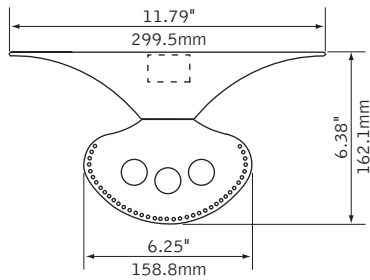
Two-piece sculpted end caps are removable to allow for continuous mounting of multiple luminaires.

Versatile design allows fixture to mount directly to drywall or to T-bar grid ceiling applications.

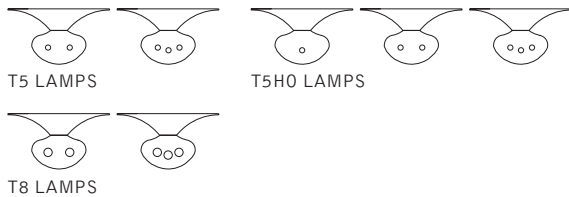
Lighting distribution provides illumination across the ceiling and walls.

Excellent choice for drywall ceiling or shallow plenum grid applications.

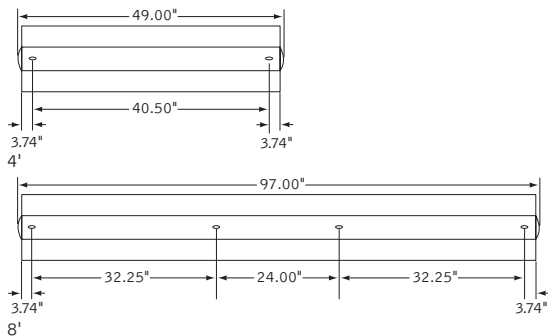
dimensional data



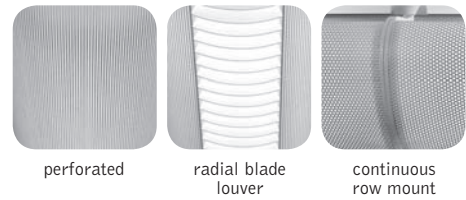
lamping options



fixture information



shielding options & details

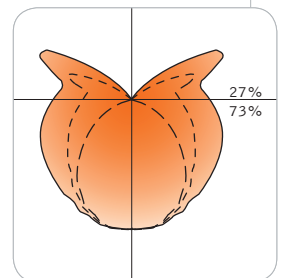


companion luminaire



performance

Perforated Lamp Shield
 2-Lamp T8
 79% Efficiency
 890 cd @ 5°

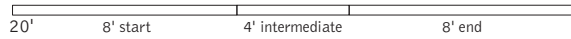


Visit focalpointlights.com for complete photometric data.

fixture:

project:

mounting information



Consult factory for additional row length information.

specifications

construction

One-piece 20 Ga. steel housing.

Die-cast aluminum end caps complete shield assembly.

For row installation, internal brackets form hairline joint.

4' unit weight: 19 lbs.

8' unit weight: 38 lbs.

optic

One-piece 20 Ga. steel reflectors finished in Matte Satin White powder coat.

22 Ga. steel perforated lamp shield with white acrylic insert.

Optional radial blade louver, .75"H x 1" frequency blade spacing.

electrical

Luminaires are pre-wired for specified circuits.

Electronic ballasts are thermally protected and have a Class "P" rating.

Optional dimming ballasts available.

UL and cUL listed.

finish

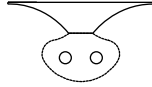
Polyester powder coat applied over a 5-stage pretreatment.

ordering

luminaire series		FS1
Softlite I	FS1	_____
shielding		_____
Perforated Shield	PS	_____
Radial Blade Louver	RLP	_____
lamping		_____
2 Lamp T5	2T5	_____
3 Lamp T5	3T5	_____
1 Lamp T5HO	1T5HO	_____
2 Lamp T5HO	2T5HO	_____
3 Lamp T5HO	3T5HO	_____
2 Lamp T8	2T8	_____
3 Lamp T8	3T8	_____
circuit		_____
Single Circuit	1C	_____
Dual Circuit	2C	_____
voltage		_____
120 Volt	120	_____
277 Volt	277	_____
347 Volt	347	_____
ballast		_____
Electronic Instant Start <20% THD (T8 only)	E	_____
Electronic Program Start <10% THD	S	_____
Electronic Dimming Ballast*	D	_____
mounting		_____
Surface Grid	SG	_____
Surface Drywall	SW	_____
factory options		_____
Emergency Circuit*	EC	_____
Emergency Battery Pack*	EM	_____
HLR/GLR Fuse	FU	_____
Include 3500K Lamp	L830	_____
Include 3000K Lamp	L835	_____
Include 4100K Lamp	L841	_____
finish		WH
Matte Satin White	WH	_____
luminaire length		_____
4'	4	_____
8'	8'	_____
12' (8' + 4')	12'	_____
16' (8' + 8')	16'	_____
20' (8' + 4' + 8')	20'	_____
24' (8' + 8' + 8')	24'	_____

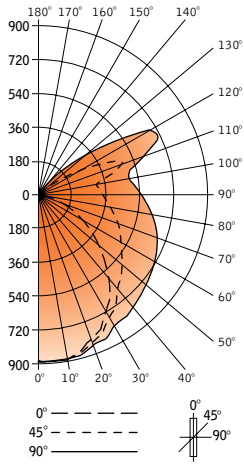
* for more information see Reference section.

surface mount
softlite™ I



Filename: FS1PS2T8.IES
 Catalog #: FS1-14-B-2-T8-E-120-SM-PS-WH
 Efficiency: 79%
 Test #: 11996.0

CANDLEPOWER DISTRIBUTION



Spacing 1.2
 Criterion: 1.5

Vertical Angle	Horizontal Angle				Zonal Lumens
	0°	22.5°	45°	67.5°	
0°	879	879	879	879	879
5°	888	887	888	890	890
15°	860	861	868	878	881
25°	785	788	811	834	846
35°	666	680	720	774	805
45°	505	531	617	718	762
55°	350	392	545	680	739
65°	196	281	479	638	700
75°	93	211	427	584	648
85°	22	167	360	515	577
90°	3	150	342	491	551
95°	13	135	319	461	517
105°	24	166	407	481	510
115°	21	39	381	662	712
125°	19	26	144	328	476
135°	0	15	30	144	187
145°	0	0	0	11	19
155°	0	0	0	0	0
165°	0	0	0	0	0
175°	0	0	0	0	0
180°	0	0	0	0	0

LUMEN SUMMARY

	Zone Lumens	% Lamp	% Fixt
0°-30°	707	12.0	15.3
0°-90°	3375	57.2	72.9
90°-130°	1198	20.3	25.9
90°-180°	1256	21.3	27.1
Total Luminaire	4631	79	100.0

LUMINANCE DATA (CD/M²)

Vertical Angle	0°	45°	90°
45°	1937	1547	1911
55°	1655	1467	1989
65°	1258	1439	2103
75°	975	1503	2281
85°	685	1588	2545

CO-EFFICIENTS OF UTILIZATION

Floor	80			70			20							
Ceiling	70	50	30	10	70	50	10	50	30					
Wall	70	50	30	10	70	50	10	50	30					
RCR 0	88	88	88	88	84	84	84	75	75	68	68	61	61	57
1														
2	79	74	70	66	74	70	63	63	58	56	52	50	47	44
3														
4	71	64	58	53	67	60	50	54	46	48	42	43	38	35
5														
6	64	56	49	43	60	53	42	47	38	42	35	38	32	29
7														
8	59	49	42	36	55	46	35	42	32	37	29	33	27	24
9														
10	53	43	36	30	50	41	29	37	27	33	25	29	23	20

Numbers indicate percentage values of

Go to www.focalpointlights.com for additional photometric data.