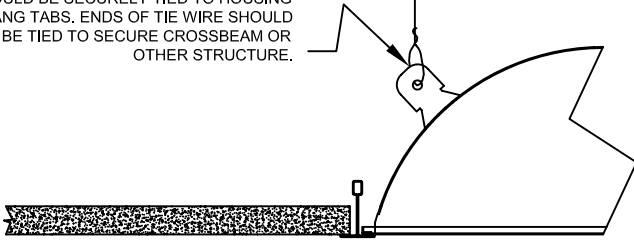


# FLU - LUNA

## SAFETY AND INSTALLATION INSTRUCTIONS

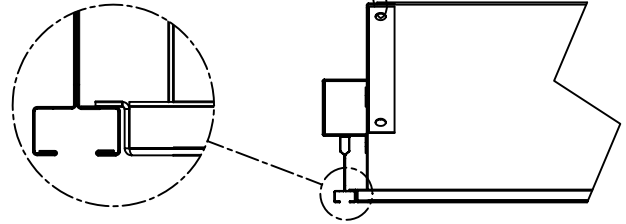
FIXTURES MUST BE INSTALLED BY A QUALIFIED ELECTRICIAN (CHECK WITH LOCAL AND NATIONAL CODES FOR PROPER INSTALLATION). TO PREVENT ELECTRICAL SHOCK, DISCONNECT ELECTRICAL SUPPLY BEFORE INSTALLATION OR SERVICING.

AFTER LUMINAIRE IS POSITIONED IN GRID, TIE WIRE (SUPPLIED BY OTHERS) SHOULD BE SECURELY TIED TO HOUSING HANG TABS. ENDS OF TIE WIRE SHOULD BE TIED TO SECURE CROSSBEAM OR OTHER STRUCTURE.



EXPOSED-T BAR (9/16", 15/16")

AFTER LUMINAIRE IS POSITIONED IN SLOT-T (CEILING TYPE), TIE WIRE SHOULD BE SECURELY TIED TO HOUSING HANG HOLES. END OF TIE WIRE SHOULD BE TIED TO SECURE CROSSBEAM OR OTHER STRUCTURE.



FINE LINE (9/16" SLOT-T)

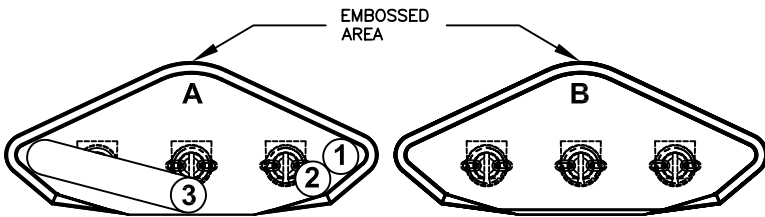
U.S. PATENTS: D 395,727  
D 397,819

### TO INSTALL LAMPS:

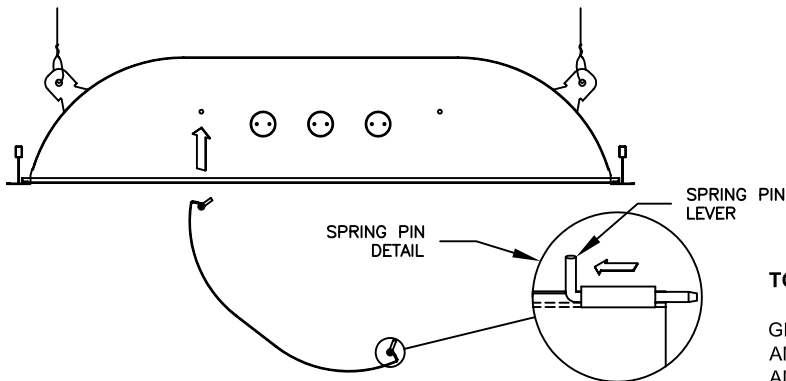
ALL LAMPS MUST FIRST BE POSITIONED INSIDE OF EMBOSSED AREA BEFORE ENGAGING LAMP HOLDERS (A), THIS IS MOST IMPORTANT FOR 3 LAMP T8. ONCE ALL LAMPS HAVE BEEN POSITIONED INSIDE EMBOSSED AREA THEY CAN THEN BE ENGAGED ON THE LAMP HOLDERS (B).

### TO REMOVE LAMPS

FOR LAMP REMOVAL, REVERSE INSTALLATION PROCEDURE.



## SHIELD INSTALLATION AND REMOVAL



### TO INSTALL SHIELD:

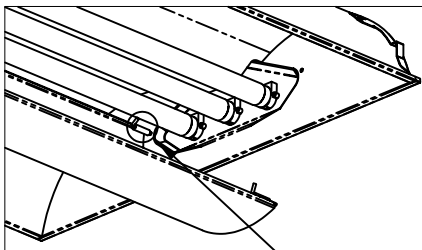
GRASP SHIELD SPRING PIN LEVERS (ON ONE SIDE OF BASKET FIRST) AND COMPRESS LIGHTLY. PUSH SHIELD INTO LUMINAIRE HOUSING AND ALIGN SPRING PINS WITH MOUNTING HOLES.

AFTER FIRST SIDE IS ENGAGED, BASKET SWINGS FREELY. GRASP SPRING PIN LEVERS ON LOOSE SIDE OF BASKET AND REPEAT PROCEDURE TO FULLY INSTALL SHIELD.

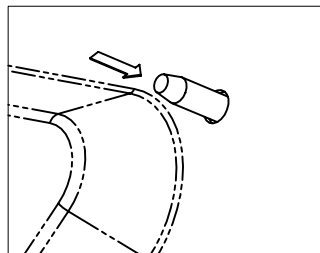
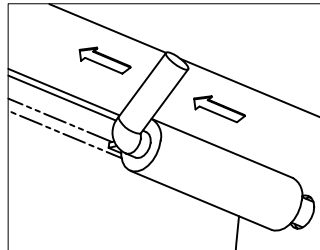
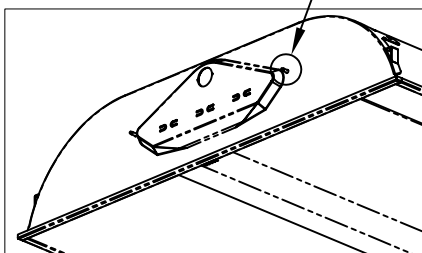
### TO REMOVE SHIELD:

LOCATE SPRING PIN LEVERS ON ONE SIDE OF SHIELD, COMPRESS LIGHTLY AND RELEASE PINS FROM (2) OF THE MOUNTING HOLES.

BASKET SWINGS FREELY ON REMAINING SPRING PINS, RELEASE REMAINING SPRING PINS TO COMPLETELY REMOVE BASKET.



SEE ENLARGED  
DETAIL



CONTRACTOR IS RESPONSIBLE FOR ADEQUATELY REINFORCING WALLS AND/OR CEILINGS TO SUPPORT FIXTURE WEIGHT. FOCAL POINT, L.L.C. ACCEPTS NO RESPONSIBILITY FOR INADEQUATELY REINFORCED WALLS AND/OR CEILINGS.

THE INFORMATION CONTAINED IN THIS DRAWING IS THE SOLE PROPERTY OF FOCAL POINT LLC. ANY REPRODUCTION IN PART OR WHOLE WITHOUT THE WRITTEN PERMISSION OF FOCAL POINT LLC IS PROHIBITED.

2006 © FOCAL POINT LLC

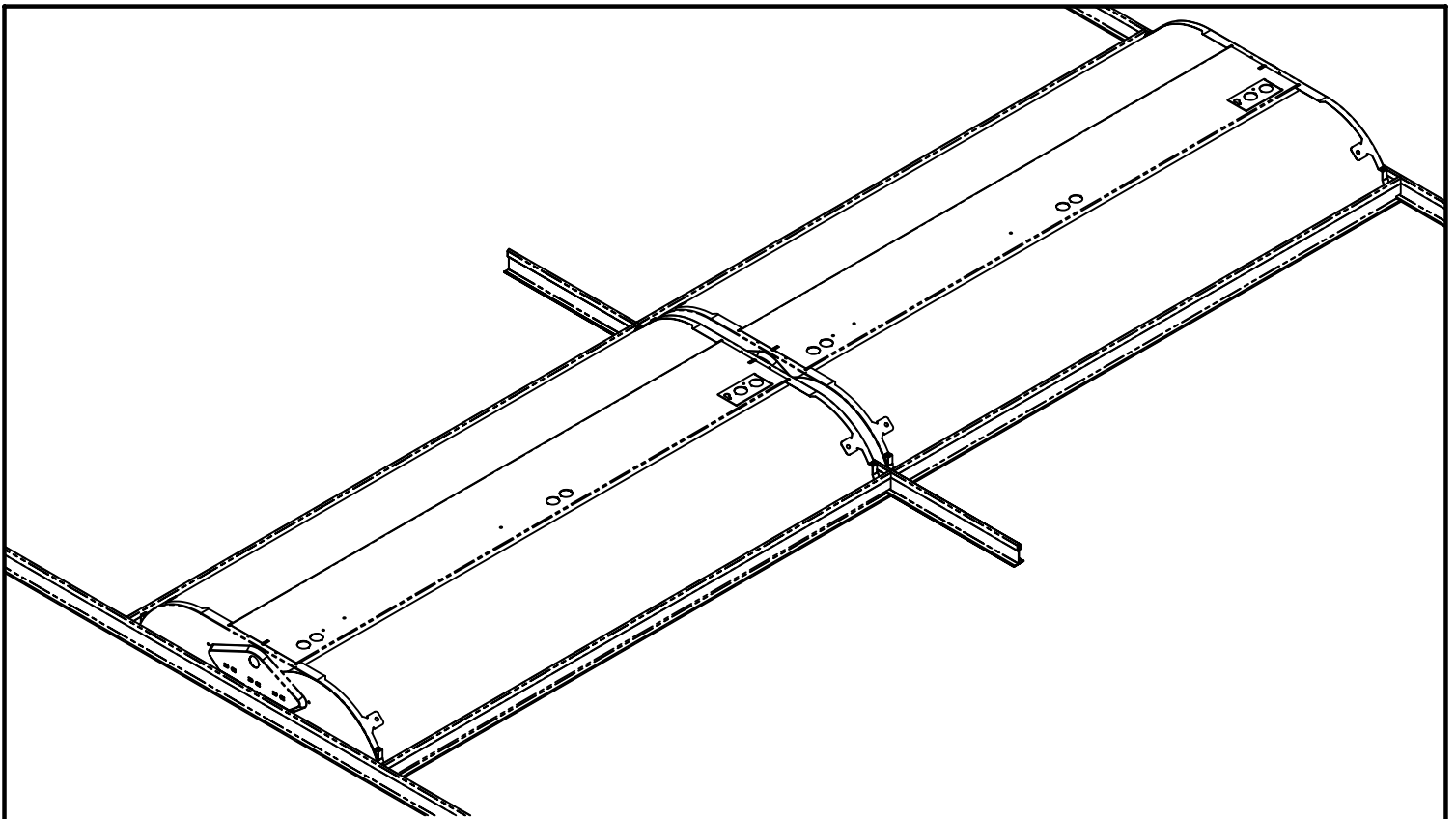


INSTALLATION GUIDE NO.

ISO116

DWG. NO.

REV. E



## ROW MOUNTING

T8  
LAMPHOLDER  
EMBOSS

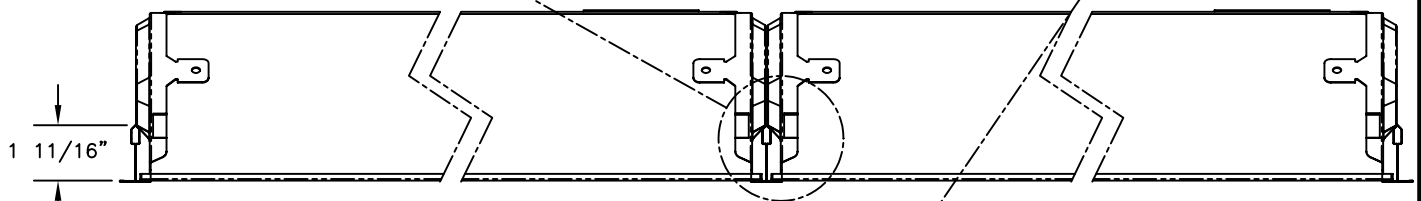
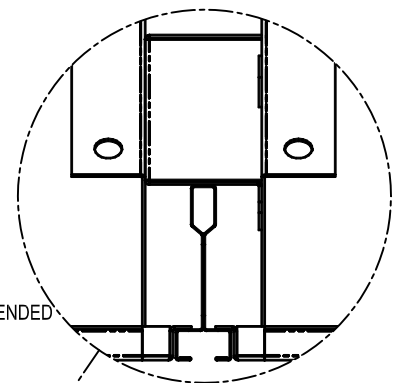
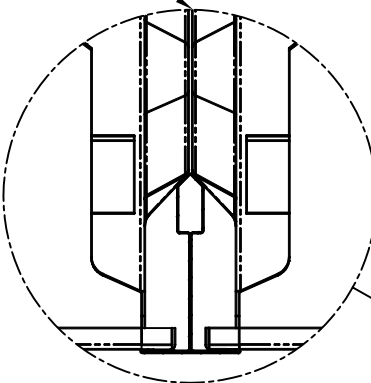
T8  
LAMPHOLDER  
CUP

BIAX AND T5 LUMINAIRES CAN BE ROW MOUNTED (REFERENCE CEILING SYSTEM FOR SUFFICIENT LUMINAIRE CLEARANCE).

T8 LUMINAIRES CAN BE ROW MOUNTED IN MOST SUSPENDED CEILING SYSTEMS. LUMINAIRES ARE SUPPLIED WITH 1 LAMPHOLDER CUP (OR 2 EMBOSSSES) EXTENDING BEYOND THE END CAP(S), CEILING SYSTEM MUST ALLOW THESE CUPS TO EXTEND INTO NEXT LUMINAIRE OPENING. WALL TO WALL RUNS ARE NOT POSSIBLE.

### EXPOSED-T BAR (GRID)

T8 LUMINAIRE CANNOT BE INSTALLED IN HIGH PROFILE SUSPENDED CEILING SYSTEMS (OVER  $1\frac{11}{16}$  INCHES) EXPOSED-T ONLY.



### FINE LINE (SLOT-T)

T8 LUMINAIRE CANNOT BE INSTALLED IN HIGH PROFILE SUSPENDED CEILING SYSTEMS (OVER  $1\frac{3}{4}$  INCHES) SLOT-T ONLY.

