

LEWNA

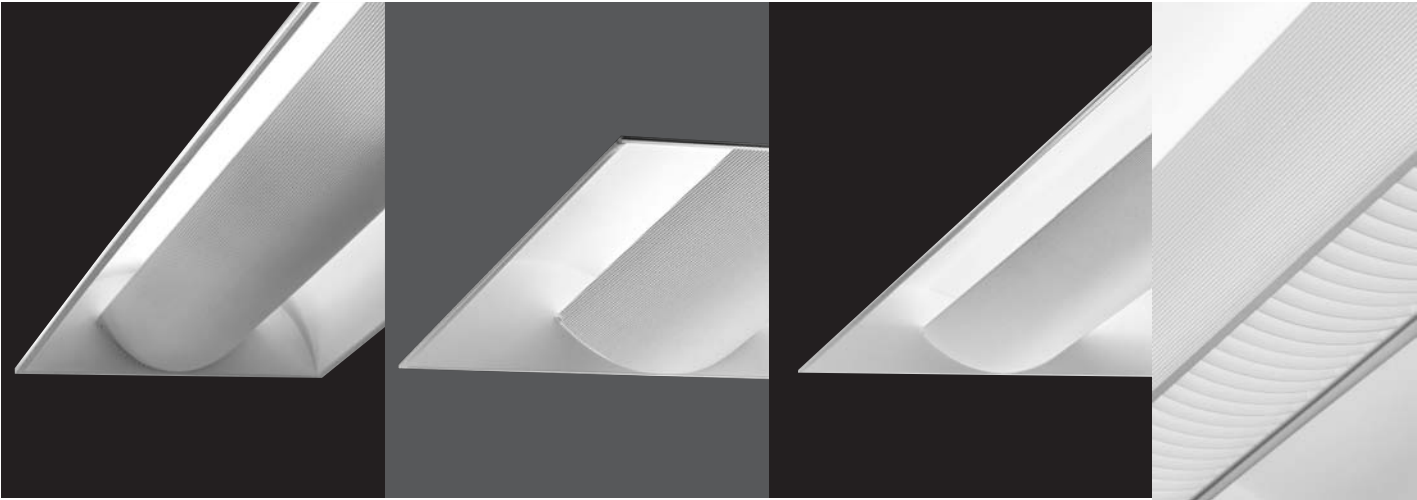


FOCAL POINT™

luna.

Luna™ by Focal Point® lights up a space with all the efficiency of parabolic troffers. Yet its high angle distribution assures pleasing, uniform illumination of vertical surfaces, highlighting interior architecture in a way parabolics can't. Its diffuse glow minimizes glare and reflection on computer screens and softens shadows on reading and writing surfaces, contributing to a comfortable environment. Yet this recessed indirect design is less costly than most suspended linear systems, and performs beautifully in rooms with low ceiling heights. Elegant looks. Advanced engineering. Superior fit and finish. Luna delivers everything you expect from the leader in recessed indirect lighting.

To suit the needs of virtually any interior space, Luna is available in a choice of configurations, all of which may be mounted individually or in continuous rows in drywall or grid ceilings. Its matte satin white paint finish eliminates hot spots and lamp image often seen in other recessed indirect systems. Perforated lamp shields and louvers snap out for easy relamping. Dimming and emergency options are available.



1' X 4' LUNA (FLU-14)

- 2-lamp T8 (32W)
- 2-lamp T5 (28W)
- 2-lamp T5H0 (54W)

2' X 2' LUNA (FLU-22)

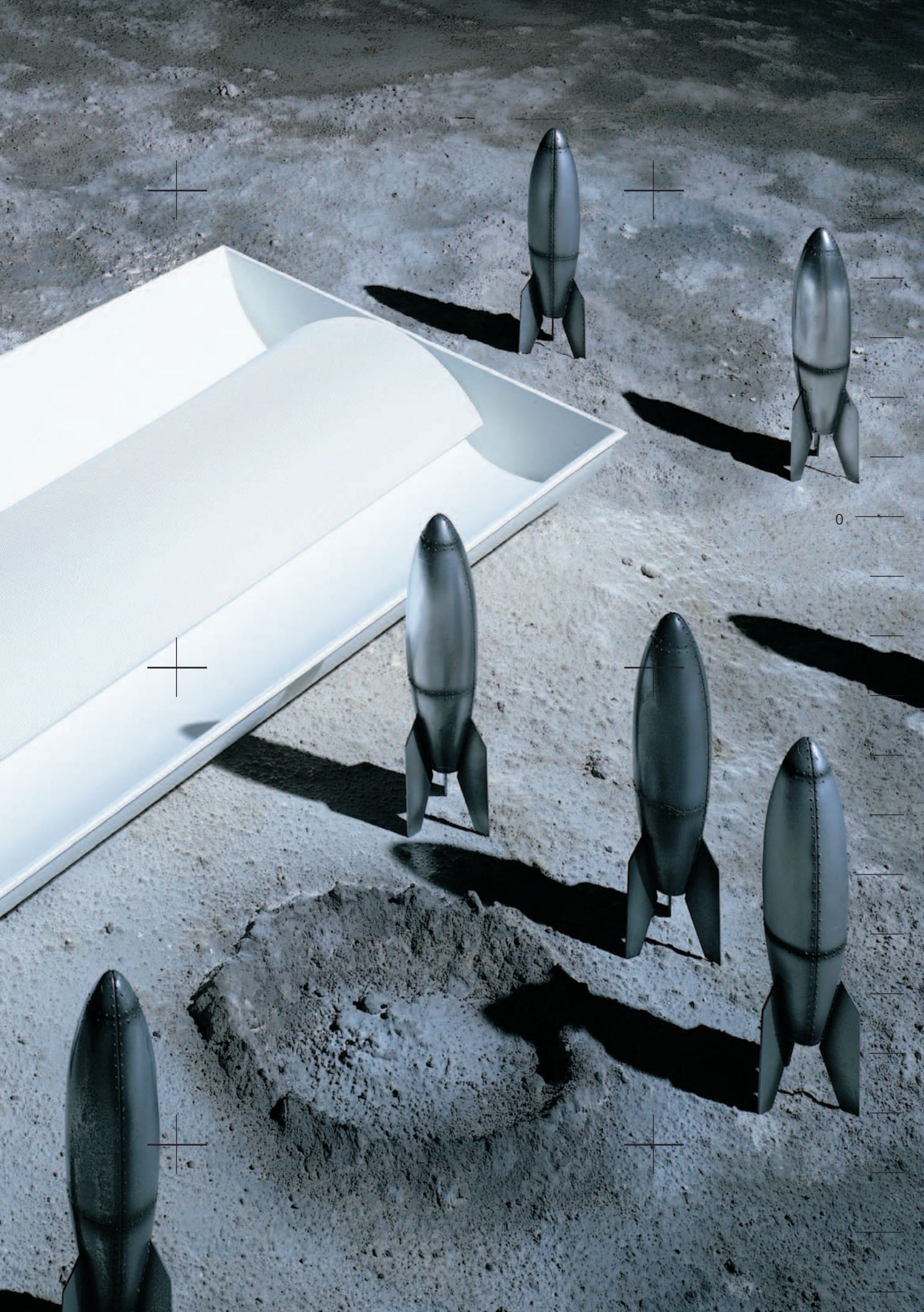
- 2- or 3-lamp 40 Watt Biax
- 2-lamp 50 Watt Biax
- 2-lamp 55 Watt Biax
- 2-lamp T8 U-Bend (31W)

2' X 4' LUNA (FLU-24)

- 2- or 3-lamp T8 (32W)
- 2- or 3-lamp T5 (28W)
- 2- or 3-lamp T5H0 (54W)

All Luna fixtures may be specified with optional radial louver.

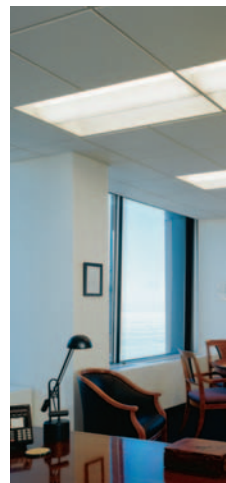






Luna™ performs beautifully, efficiently, stylishly in any environment large or small, from retail spaces to lobbies, hallways and conference rooms to private and shared work areas. And you can be sure this proven, highly versatile lighting solution will be on the job site when you need it, thanks to a quick-ship program that delivers in as little as five days. Consider Luna by Focal Point®. Recessed indirect luminaires of otherworldly quality and performance, now available at the speed of light. Ask your lighting agent or visit www.focalpointlights.com for details.

MAIN PHOTO OPPOSITE Richard Pollack & Associates, San Francisco, CA Photo: Ross Muir
INSET PHOTOS L&R Corporate offices, John Hancock Tower, Chicago, IL Photo: Hotshots Imaging (Mike McKenzie)
INSET PHOTO CENTER East Bank Club, Chicago, IL Photo: Hedrich Blessing (Craig Dugan)







FOCAL POINT LLC
4201 South Pulaski Road
Chicago, Illinois 60632
t 773.247.9494
f 773.247.8484

www.focalpointlights.com