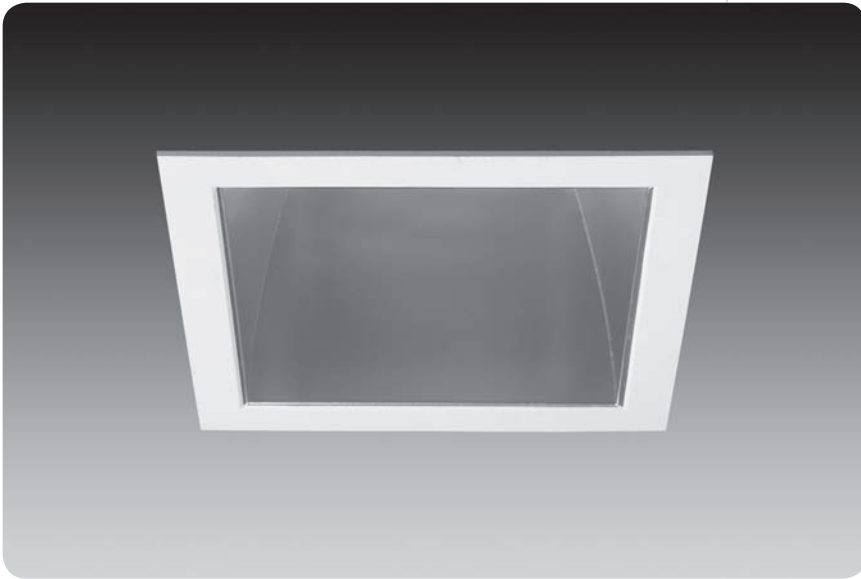


4.5" x 4.5" – downlight

id®



CFL



features

Overlap trim features:

- One piece die-cast construction creates seamless integration with reflector eliminating mitered corners.
- Die-cast flange maintains tight fit of reflector corners.
- **SmartLock™** clip allows for quick removal and re-assembly of trim components for field painting.

Flush trim features:

- Minimal .225" thick self flanged trim integrates seamlessly into drywall ceilings.
- Flush flange requires no field painting.

Centered optics achieved with **CenterLock™** die-cast socket cup which locates and locks 18, 26 or 32 watt lamp in center of aperture.

LampAlign™ allows installation of upper reflector in any direction regardless of housing direction. Lamps are aligned for consistent appearance and light distribution.

Reflector design eliminates tabs in corners for a seamless, no light leaks look.

1" tall housing collar rotates up to 90°.

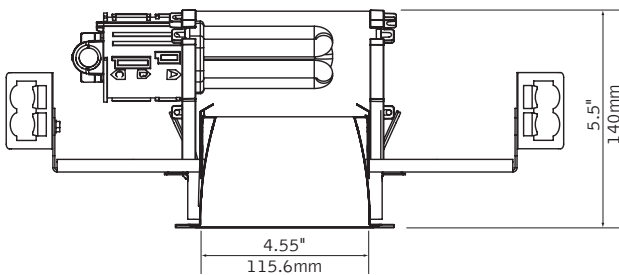
55-degree cut-off to lamp and its image.

lens option

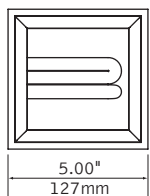


MicroGlow

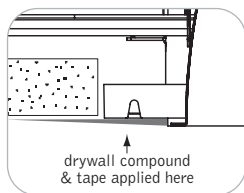
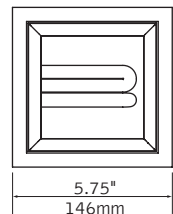
dimensional data



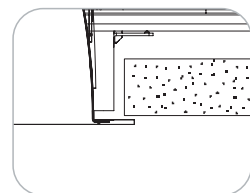
flush trim



overlap trim

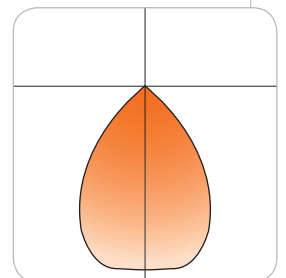


drywall compound & tape applied here



performance

1-Lamp 32W Triple Tube
 Downlight Optic, Clear Diffuse
 45% Efficiency
 761 cd @ 10°



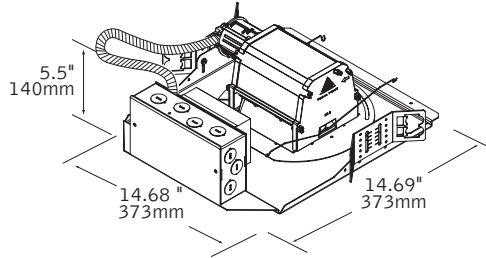
Visit focalpointlights.com for complete photometric data.

august 2009

fixture:
project:

details

t-rated housing non-ic



specifications

housing

Frame features up to 90-degree locking adjustment of aperture after installation for parallel alignment to walls or adjacent fixtures.

Frame may be installed into ceiling thicknesses up to 1". For thicker ceiling consult factory.

Flex conduit with screw tight fittings mechanically fasten to CenterLock™ socket cup. CenterLock™ provides proper venting for lamps.

Butterfly brackets allow mounting to 1/2 emt, bar hangers may be specified as an accessory for wood installations.

Galvanized steel frame includes large Junction box 7" x 3.5" with (10) 1/2" pry outs. UL listed for through branch wiring, four #12 90°C conductors.

upper reflector

Multi-faceted steel upper reflector mounts to die cast end caps and is finished in High Reflectance White powder coat. Adjustable socket cup allows 18, 26 and 32W lamps to be centered in the optic to maintain optimal performance.

trim

Lower reflector provides 55-degree cut off to lamp and lamp image.

Parabolic aluminum fastens to die-cast flange on overlap trim. Flush trim option for drywall installations features a minimal reflector flange.

Trim attaches to upper reflector via torsion springs.

Consult factory for custom reflector finishes.

Upper reflector and lower reflector ship separately from housing frame to avoid construction abuse.

Optional .125" thick MicroGlow™ micro prism lens provides lamp obscuration.

electrical

Luminaires are pre-wired for single circuit with thermally protected Class "P" program start <10% THD electronic ballast.

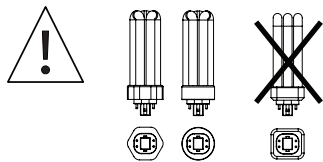
Consult factory for dimming specifications and availability.

UL and cUL Listed.

Integral emergency battery test switch and indicator light in optic.

Rotary lock socket allows for easy lamp removal and reduces lamp breakage.

One lamp triple tube compact fluorescent, 4-pin, 18W-(GX24q-2), 26W/32W-(Gx24q-3/4). OSi and GE lamps only.



finish

Trim flange, end caps and upper reflector finished in polyester powder coat over a 5-stage pre-treatment.

housing ordering

housing series		<u>FC44</u>
ID CFL Housing	FC44	
lamp		
(OSI & GE lamps only)		
18W Triple Tube, GX24q-2	18TT	
26W Triple Tube, GX24q-3 (Includes wattage restriction label)	26TT	
32W Triple Tube, GX24q-3	32TT	
ballast		
Electronic Program Start <10% THD	S	
Electronic Dimming Ballast*	D	
voltage		
120V	120	
277V	277	
347V	347	
faceplate type		
Square Flush	SF	
Square Overlap	SO	
housing type		<u>T</u>
Thermally Protected, Non-IC	T	
factory options		
Bar Hangers	BH	
Chicago Plenum	CP	
Emergency Battery Pack*	EM	
HLR/GLR Fuse	FU	
Include 3000K Lamp	L830	
Include 3500K Lamp	L835	
Include 4100K Lamp	L841	

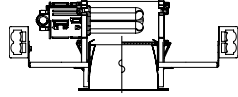
trim ordering

trim aperture		<u>D44</u>
4.5" Square Aperture	D44	
faceplate type		
Square Flush	SF	
Square Overlap	SO	
optic		
Downlight	DN	
Regress MicroGlow Lens	RLMG	
color		
Clear Specular	CS	
Clear Diffuse	CD	
Warm Diffuse	WD	
Silver Talc Diffuse	TD	
flange finish		
(for SO option only)		
White	WH	
Black	BK	
Titanium Silver	TS	
Aluminum Raw	AL	

a complete unit consists of two line items, housing and trim
example: FC44-32TT-S-120-SO-T
D44-SO-DN-CD-WH

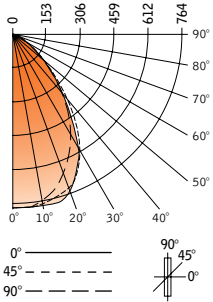
* for more information see Reference section.

4.5"x4.5" – downlight
id®



Filename: D44DNCS32TT.IES
Catalog #: FC44-32TT-U-SO-T, D44-SO-DN-CS-WH
Efficiency: 45%
Photometric Report #: 13971.0

CANDLEPOWER DISTRIBUTION



Vertical Angle	Horizontal Angle				Zonal Lumens
	0°	22.5°	45°	67.5°	
0°	760	760	760	760	760
5°	761	760	763	764	763
15°	699	711	735	759	761
25°	569	604	660	647	646
35°	403	456	463	422	410
45°	224	233	217	236	231
55°	52	69	62	58	49
65°	9	8	9	9	9
75°	3	2	3	2	3
85°	0	0	0	0	0
90°	0	0	0	0	0

Spacing Criteria
End: 1.0
Cross: 1.1

LUMEN SUMMARY

Zone	Lumens	% Lamp	% Fixt
0°-30°	572	23.8	52.6
0°-40°	847	35.3	77.8
0°-60°	1077	44.9	99
0°-90°	1089	45.4	100
Total Luminaire	0°-180° 1089	45.4	100

LUMINANCE DATA (CD/M²)

Vertical Angle	0°	45°	90°
45°	24062	23310	24814
55°	6886	8210	6489
65°	1618	1618	1618
75°	880	880	880
85°	0	0	0

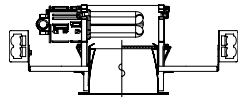
CO-EFFICIENTS OF UTILIZATION

Floor	80			70			50			30			10			00		
Ceiling	70	50	30	10	70	50	10	50	10	50	10	50	10	50	10	00	00	00
Wall	70	50	30	10	70	50	10	50	10	50	10	50	10	50	10	00	00	00
RCR 0	54	54	54	54	53	53	53	50	50	48	48	46	46	46	46	45	45	45
1	51	50	49	48	50	49	47	47	45	45	44	44	43	42				
2	49	46	44	43	48	45	42	44	41	43	40	41	39	39				
3	46	43	40	38	45	42	38	41	37	40	37	39	36	35				
4	43	39	37	34	42	39	34	38	34	37	33	36	33	32				
5	40	36	33	31	40	36	31	35	31	34	30	33	30	29				
6	38	34	31	28	37	33	28	32	28	32	28	31	28	27				
7	36	31	28	26	35	31	26	30	26	29	25	29	25	25				
8	33	28	25	23	33	28	23	28	23	27	23	27	23	22				
9	31	26	23	21	30	26	21	25	21	25	21	24	20	20				
10	29	24	21	19	28	24	19	23	19	23	19	22	19	18				

Go to www.focalpointlights.com for additional photometric data.

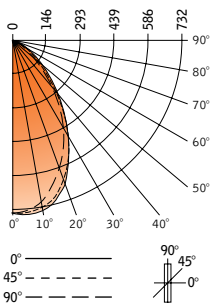
Numbers indicate percentage values of reflectivity.

4.5"x4.5" – downlight
id®



Filename: D44DNCD32TT.IES
Catalog #: FC44-32TT-S-SO-T, D44-SO-DN-CD-WH
Efficiency: 42%
Photometric Report #: 14182.0

CANDLEPOWER DISTRIBUTION



Vertical Angle	Horizontal Angle				Zonal Lumens
	0°	22.5°	45°	67.5°	
0°	727	727	727	727	727
5°	717	722	726	729	732
15°	633	656	679	390	693
25°	497	523	549	552	544
35°	344	363	353	357	365
45°	203	192	181	207	221
55°	97	78	75	90	107
65°	44	33	28	38	48
75°	15	12	10	14	20
85°	4	3	2	3	5
90°	0	0	0	0	0

Spacing Criteria
End: 0.9
Cross: 1.0

LUMEN SUMMARY

Zone	Lumens	% Lamp	% Fixt
0°-30°	508	21.2	50
0°-40°	732	30.5	72
0°-60°	936	40.1	94.7
0°-90°	1016	42.3	100
Total Luminaire	0°-180° 1016	42.3	100

LUMINANCE DATA (CD/M²)

Vertical Angle	0°	45°	90°
45°	21806	19443	23740
55°	12845	9932	14170
65°	7908	5032	8627
75°	4402	2935	5869
85°	3486	1743	4357

CO-EFFICIENTS OF UTILIZATION

Floor	80			70			50			30			10			00		
Ceiling	70	50	30	10	70	50	10	50	10	50	10	50	10	50	10	00	00	00
Wall	70	50	30	10	70	50	10	50	10	50	10	50	10	50	10	00	00	00
RCR 0	50	50	50	50	49	49	49	47	47	45	45	43	43	42 <td></td> <td></td> <td></td>				
1	48	46	45	44	47	45	46	44	42	42	41	41	39	39				
2	45	42	40	39	44	42	38	40	37	39	37	38	36	35				
3	43	39	36	35	47	38	34	37	34	36	33	35	33	32				
4	39	36	33	31	39	35	31	34	30	33	30	33	30	29				
5	37	33	30	28	36	32	28	31	27	31	27	30	27	26				
6	35	30	27	25	34	30	25	29	25	29	25	28	25	24				
7	32	28	25	23	32	28	23	27	23	26	22	26	22	22				
8	30	25	26	21	30	25	20	25	20	24	20	24	20	19				
9	28	23	20	18	28	23	18	23	18	22	18	22	18	17				
10	26	21	19	17	26	21	17	21	17	21	17	20	16	16				

Go to www.focalpointlights.com for additional photometric data.

Numbers indicate percentage values of reflectivity.