

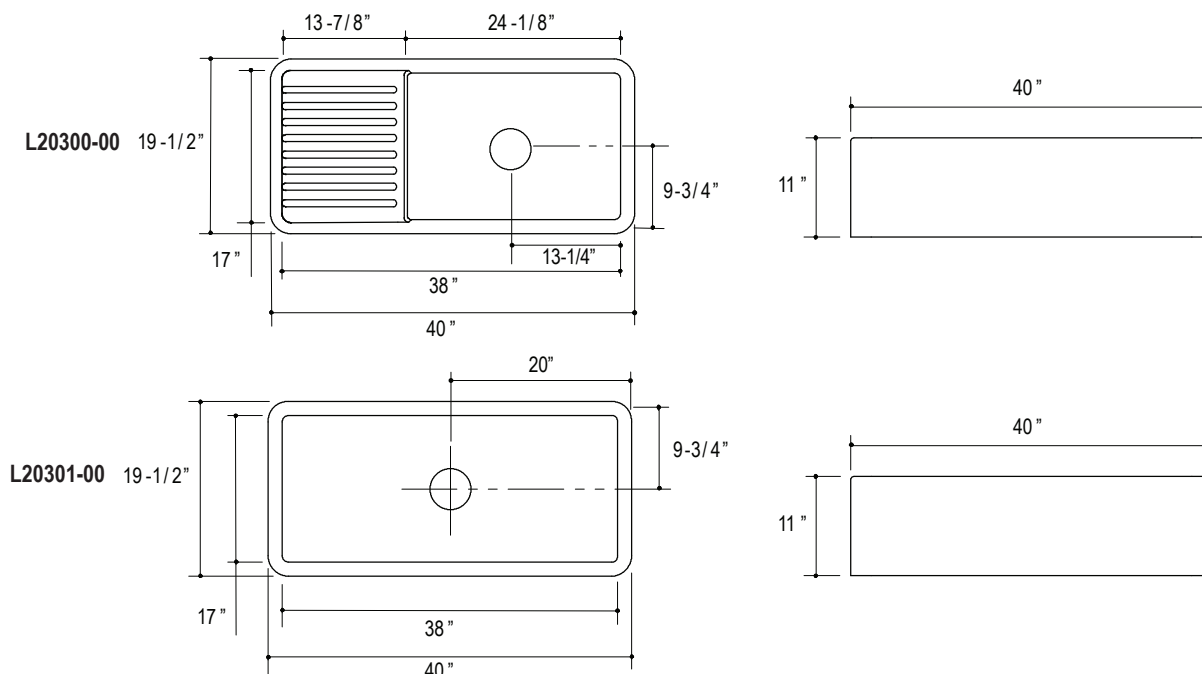
INSTALLATION INSTRUCTIONS

L20300, L20301

THANK YOU FOR CHOOSING KALLISTA

We appreciate your commitment to Kallista quality products. Please take a moment to review this manual before you install your Kallista product. If you encounter any installation or performance problems, please do not hesitate to contact us at the phone number listed at the bottom of the page.

BEFORE YOU BEGIN

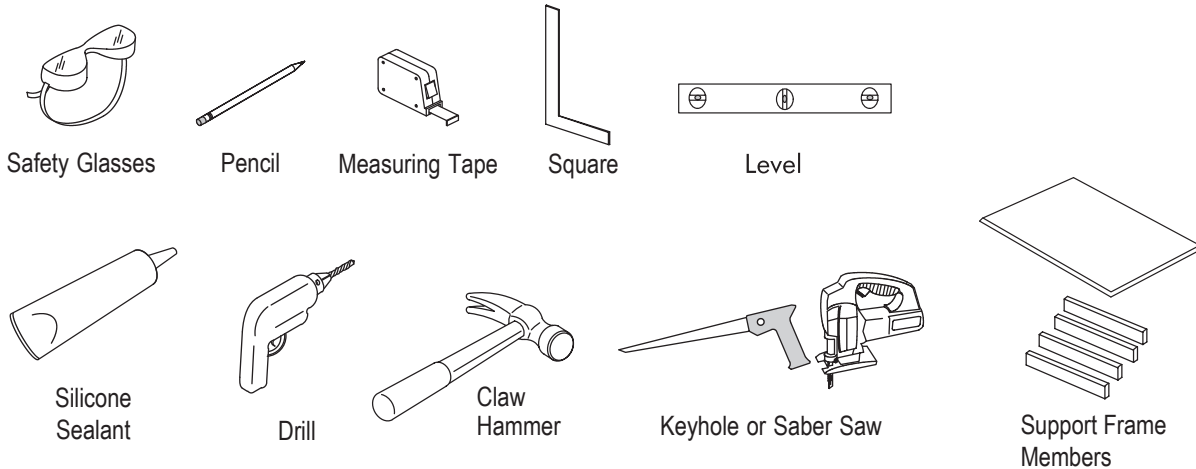


- ☐ Prior to installation, unpack all products and inspect them for damage. To prevent damage, place the sink in a safe place until ready for installation. If the product is damaged contact Kallista's Customer Service immediately at the phone number listed at the bottom of the page.
- ☐ This installation will require a minimum of two people. Do not install this fixture alone.
- ☐ Because of the standard tolerance in the size of this sink, Kallista recommends providing the cabinet maker and sink installer with the actual sink to be installed to insure proper fit in the cabinet and support frame.
- ☐ Due to the variety of installations possible with this sink, installation may require procedures other than those described in these instructions.
- ☐ The cabinet and frame shown in these instructions are generic and may not represent actual design or structure.
- ☐ Due to the special nature of this installation, Kallista recommends that an experienced cabinet maker build the new cabinet or modify an existing cabinet for this sink.
- ☐ Observe all local plumbing and building codes.
- ☐ Kallista reserves the right to make revisions in the design of plumbing products without notice, as specified in the Price Book.

INSTALLATION INSTRUCTIONS

L20300, L20301

TOOLS AND MATERIALS REQUIRED



1. CABINET/SUPPORT FRAME CONSTRUCTION

- See Figure A. Measure the actual size of the sink. The cabinet opening should equal the maximum sink dimensions to ensure a minimum gap between the sink apron and the cabinet. Dimension "H", the cabinet opening height is dependent on the type of installation and the counter top materials used for this installation. Dimension "H" will vary depending on an undercounter or tile-in application.

NOTE: The sink dimensions shown on the cover of these instructions are for reference only.

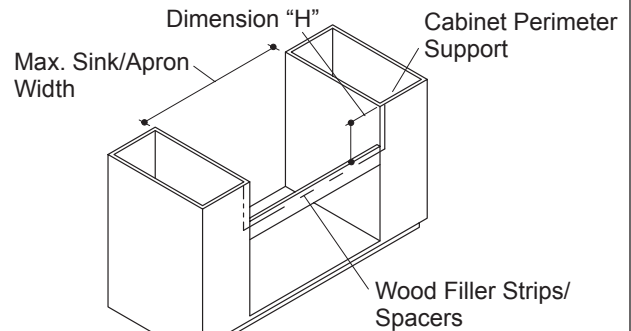


Figure A

- See Figure B. Construct a wood support frame to fit inside the cabinet opening. Allow adequate clearance for water supply lines. Determine the location of the cut out drain outlet clearance hole in the support. This hole location is dependent on the final sink location, which will vary per installation. For example, the sink apron may be flush with or extend beyond the front of the cabinet.

⚠ CAUTION: Risk of personal injury or product damage.

The wood support and frame for the sink must sufficiently support 375 pounds (approximate weight of the fireclay sink when full).

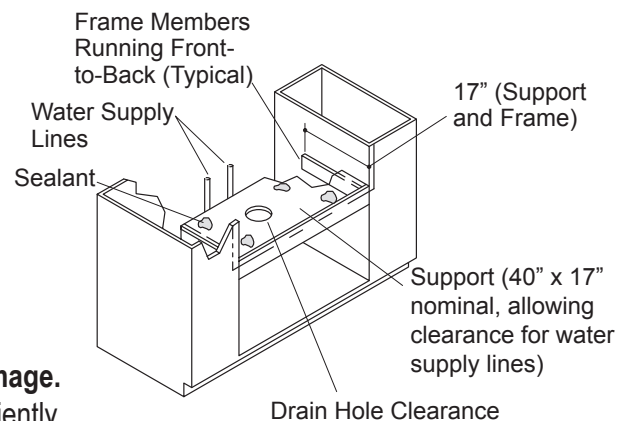


Figure B

INSTALLATION INSTRUCTIONS

SINK INSTALLATION

- ❑ See Figure C. With the final sink position determined, verify that the "Y" dimension will accommodate the supply lines, faucet, and finished countertop applicable to this installation. Verify this by placing the sink in the cabinet opening or by measuring the sink and adding the spacing necessary for the faucet and counter top/back splash.

NOTE: Figure C shows an undercounter application of the sink.

Sink locations and finished countertops (undercounter, tile-in, etc.) will vary, so dimensions and positioning will also vary per application.

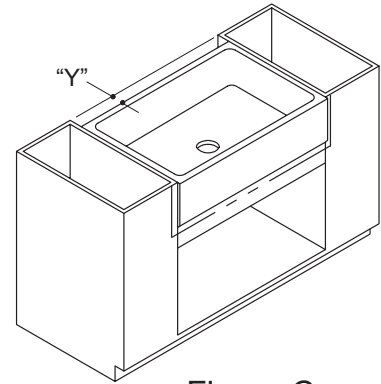


Figure C

- ❑ See Figure D. Place a thin layer of silicone sealant at each corner of the support where it will contact the sink. Gently position the sink within the support and frame.

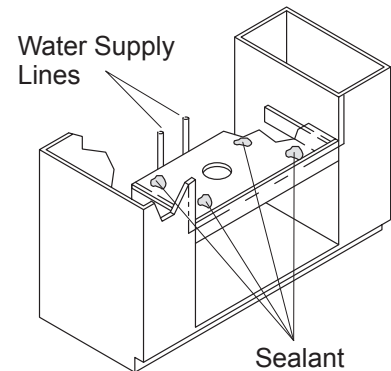


Figure D

- ❑ See Figure E. Make sure the sink rim is level and positioned properly for the faucet and countertop application for this installation. Adjust or shim between the sink and support if needed to obtain the proper fit. Apply additional sealant if using shims. Using sealant between the sink apron and cabinet is optional.
- ❑ Assemble the strainer to the sink according to the manufacturer's instructions.
- ❑ Install the finished countertop applicable to this installation. If necessary, apply sealant between the sink and the finished countertop material.

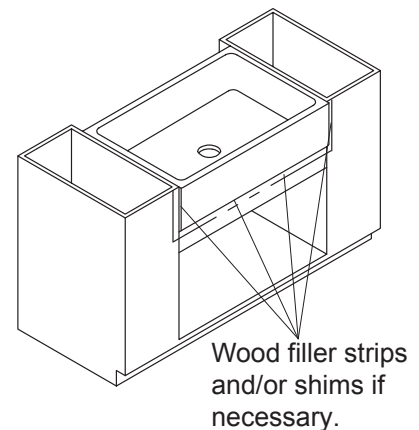


Figure E