

HEAVEN & EARTH II TABLE LAMP

RELATED PRODUCTS



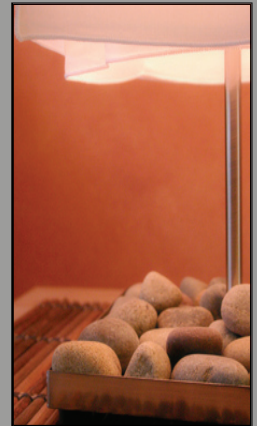
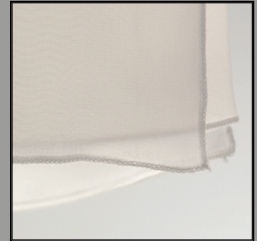
BRUSHED
NICKEL BASE



WHITE SILK
CREPE DE CHINE



RED SILK
CREPE DE CHINE



PRODUCT DESCRIPTION

Illuminated silk panels float in space in our Heaven & Earth lamps. The light it casts is suitable bright, but soft. Choose between a short shade of silk with round base (74-T) or a long shade with a square base (75-T). Our Heaven & Earth series offers many options: available as a floor lamp, pendant in three sizes, two table lamps, two chandeliers and a wall sconce. Shades are removable for cleaning. And yes, the rocks are included!

SPECIFICATIONS

Style Code	75-T
Collection	Heaven & Earth
Dimensions	29"H x 9"W
Key Features	Shade – white or red silk crepe de chine Finish – brushed nickel painted metal base Switch style – in-line Hi/Lo rotary One 100w medium incandescent base bulb – Type A
Wiring Options	--
Designer	Elizabeth Meredith
Manufacturer	Fire Farm, Inc. in the USA
Additional Notes	Custom shade or finish may be ordered for modest additional charge. Shades may be fire retardant treated for contract applications for an additional charge.

ORDERING & SHIPPING INFORMATION

Please specify	Style code, shade color
Shipping Weight	10 lbs



PO Box 458

Elkader, IA 52043

P 563.245.3515

F 563.245.3516

Info@FireFarm.com

www.FireFarm.com

© 1991-2006 Fire Farm, Inc.