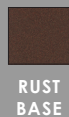
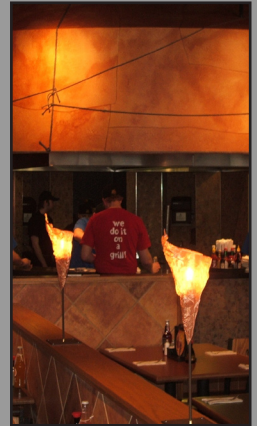


# CONE TABLE LAMP

## RELATED PRODUCTS



## PRODUCT DESCRIPTION

The Cone evokes the blaze of a torch scattering light in all directions through its copper, brass or stainless steel mesh shade. The chandelier and pendant styles feature a copper wire spiral wrap on each cone. The standing lamps have a rust or silver base. The table lamp has a Hi/Lo dimmer switch, and the floor lamp features a full range dimmer.

## SPECIFICATIONS

<b>Style Code</b>	04-T
<b>Collection</b>	Cone
<b>Dimensions</b>	28"H x 6"W
<b>Key Features</b>	Shade – stainless steel, copper or brass mesh Finish – rust or silver painted metal base Switch style – in-line Hi/Lo rotary One 60w medium incandescent base bulb – Type T
<b>Wiring Options</b>	--
<b>Designer</b>	Adam Jackson Pollock and Ben Goldstone
<b>Manufacturer</b>	Fire Farm, Inc. in the USA
<b>Additional Notes</b>	Custom finish may be ordered for modest additional charge

## ORDERING & SHIPPING INFORMATION

<b>Please specify</b>	Style code, shade color, base finish
<b>Shipping Weight</b>	4 lbs



PO Box 458

P 563.245.3515

Info@FireFarm.com

Elkader, IA 52043

F 563.245.3516

www.FireFarm.com