

unika vaev

Unika Vaev, Pastoral Collection, February 2007

You can find the following images on the enclosed CD-ROM, page 1(2)



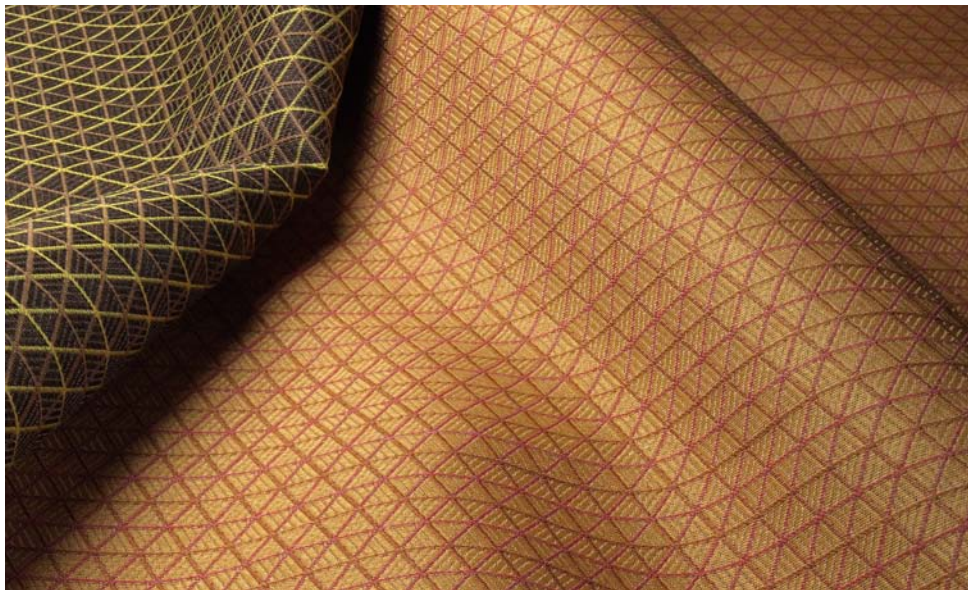
Pastoral stack (cool).tif

Top to bottom: Furrows 630/63, Windmill 629/80, Fleece 627/80 shadow (reversible), Windmill 629/63 and Fleece 627/80 overcast (reversible)



Pastoral stack (red).tif

Top to bottom: Furrows 630/90, Fleece 627/54 sunrise/sunset (reversible), Windmill 629/95, Furrows 630/21 and Windmill 629/90



Windmill.tif

From left from right: Windmill 629/94 early bird and Windmill 629/54 aurora



Furrows 630/67 Arugula.tif



Fleece.tif

From left from right: Fleece 627/40 midnight (reversible) and
Fleece 627/39 violet/crocus (reversible)



Fleece (uph).tif

Sofa in Fleece 627/80 shadow/overcast, 1st blanket in Fleece 627/92 winter/spring and
2nd blanket 627/54 sunrise/sunsey (Fleece is a reversible fabric)