

**Telephone:**  
**1-800-901-4374**  
**Fax:**  
**1-570-296-5656**  
**JaliteUSA.com**

JALITE manufacture a complete range of IMO Signs and associated products for life-saving application and safety equipment location.

For more information please visit our website.

## Fire Safety Management - Escape Route Illumination System

### Ensure your Escape Routes are illuminated!

In the event of a fire, the efficient and speedy evacuation of personnel is vital if injury or harm to occupants is to be avoided.

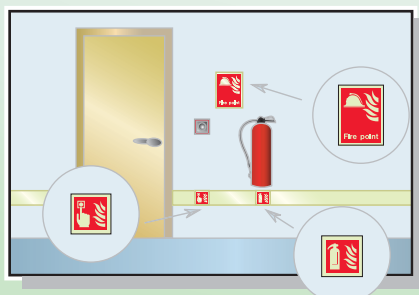
To help guide people to safety JALITE have developed a photoluminescent escape route illumination system.

The JALITE photoluminescent escape route illumination system is designed to communicate a clear, unambiguous, continuous means of escape message right through to a place of safety.

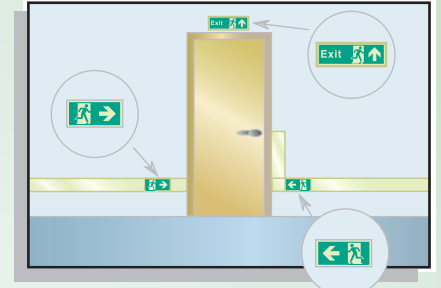
This message incorporates safety wayguidance signs and fire fighting equipment identification and location signs.

The system is mechanically fitted to the wall and skirting surfaces, into which JALITE photoluminescent material and appropriate signs can be easily clipped into position, in order to complete the system.

When installed in accordance with the P.S.P.A. 002: Part 2 Code of Practice, this system can provide an extremely efficient and cost effective solution, meeting these new requirements.



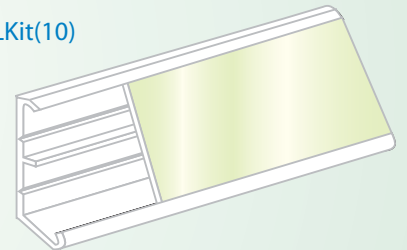
Ensure fire fighting equipment is clearly marked along the designated escape routes.



The escape route illumination system should be continuous, except when interrupted by doors.

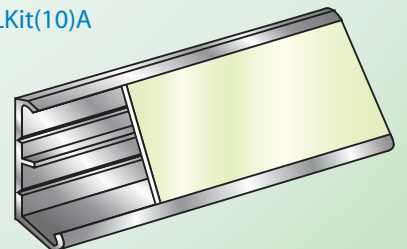
- Available in either white gloss pvc or silver finish aluminium.
- Supplied in 2.5m lengths.
- To order, simply quote the reference number shown in blue.
- End caps available upon request.

Ref: LLLKit(10)



Kit comprises of:  
4 x 2.5m lengths white gloss pvc profile.  
8 x 54mm high x 1.25m lengths of JALITE AAA photoluminescent Rigid PVC.

Ref: LLLKit(10)A



Kit comprises of:  
4 x 2.5m lengths silver finish aluminium profile.  
8 x 54mm high x 1.25m lengths of JALITE AAA photoluminescent Rigid PVC.

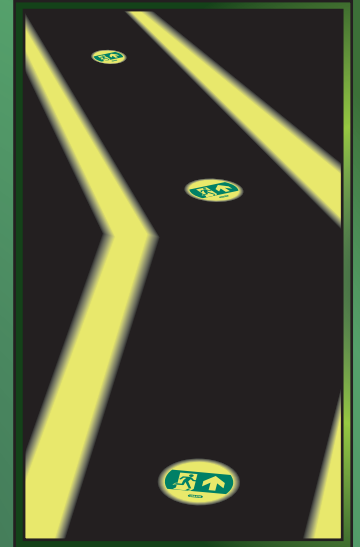
# Photoluminescent Safety Wayguidance Floor Markers

**JALITE**  
USA  
Photoluminescent Safety Products

To help guide people to safety, JALITE have developed photoluminescent safety wayguidance systems for use in commercial and industrial environments, designed to communicate a clear unambiguous, continuous escape route right through to a place of safety.

JALITE Photoluminescent Floor Markers can provide additional directional information to reinforce existing safety wayguidance systems, and can also be used in support of the suspended escape route signing where racking or furniture is adjacent to walls. Here they can provide a continuous, easily identified route to safety.

JALITE Photoluminescent Floor Markers incorporate the internationally recognised graphical symbol for means of escape to provide an escape route system that is universally understood. Like all JALITE photoluminescent products, JALITE Floor Markers are manufactured to an extremely high technical standard and meet the requirements of P.S.P.A. Class A, ensuring product integrity for use in safety wayguidance systems.



In the event of a fire at the workplace, the speedy evacuation of personnel is vital if injury, or worse, is to be avoided. Few people realise the frightening speed at which fire can spread through a building, often helped unwittingly by fire doors left open during an evacuation. Thick smoke can fill corridors, blocking the ceiling lights, making it difficult for people to see and find the means of escape. Vital minutes can be lost in the confusion, and lost minutes in a fire can mean lost lives.

## How to order Safety Wayguidance Floor Markers

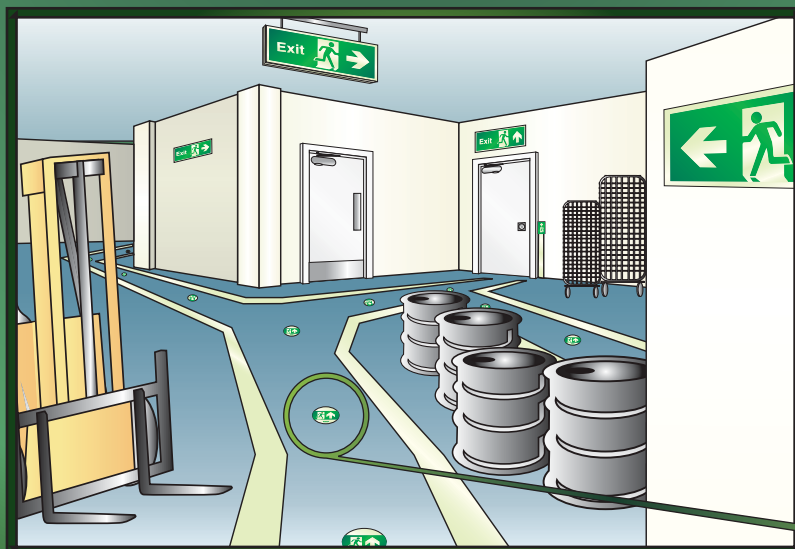


Ordering is simple;

1) Quote the unique product code number: TMG008

2) Enter the quantity of packs that you require.

i.e: TMG008 x 10



● Photoluminescent Safety Wayguidance Floor Markers are available in packs of 10

● Unique Product Code  
TMG008

Available in  
photoluminescent  
Self Adhesive Vinyl

JALITE Photoluminescent Floor Markers are simple to use. Just peel off the backing paper and stick to a clean, dust free surface to complement an existing low location lighting system, or use with escape route signing to create an effective safety wayguidance system.

