

SIMPLEX[®]

CEILINGS

255 Montpelier, St. Laurent
(Montreal) QC, Canada H4N 2G3
Tel: (800) 638-5726 Fax (514) 744-2716
www.simplexceilings.com

Specifications

Super-Cell Series

Combination of Beam & Open Cell 9-IG Series

- Panels:** Provide Simplex Ceilings Super Cell system manufactured from 0.020" (0,51mm) thick aluminum. Blade dimensions will be 3/8" (10 mm) width x cell heights shown below. Cell sizes are available in dimensions shown below .Open cell modules to fit inside beam. (Depth of reveal varies depending on beam height versus cell height.
- Beams:** Provide Simplex Ceilings Super Cell Beam system manufactured from 0.020" (0,51mm) or 0.032" (0.81 mm) thick aluminum or steel. Beam dimensions will be as shown below. All outside corners must be mitered. Provide all hanger couplers and corner brackets necessary to suspend ceiling. Exposed floating perimeter beam will have un-notched visible surfaces .Open Cell panels to fit inside beams.
- Panel Size:** (**Module**) 24" x 24" (610 mm x 610 mm). Custom sizes available upon request.
- Finish:** Select from Simplex Ceiling standards for Open Cell Series. Custom colors available upon request
- Perimeter:** Provide 1" x 2" x 96" (25 mm x 51 mm x 2439 mm) Wall Angle as required in finish to match modules (wall to wall applications).

CELL SIZES:

50 mm x 50 mm	(2" x 2")
75 mm x 75 mm	(3" x 3")
86 mm x 86 mm	(3.4" x 3.4")
100 mm x 100 mm	(4" x 4")
120 mm x 120 mm	(4.75" x 4.75")
150 mm x 150 mm	(6" x 6")
200 mm x 200 mm	(8" x 8")
300 mm x 300 mm	(12" x 12")

CELL HEIGHT:

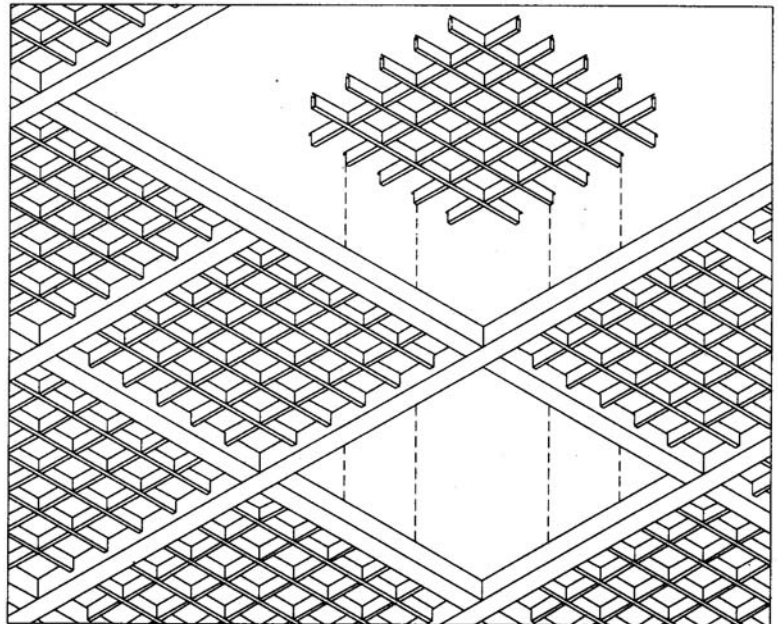
30 mm	(1-1/8")
40 mm	(1-9/16")
50 mm	(2")

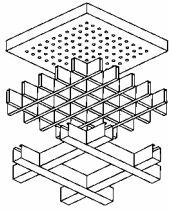
BEAM SIZES:

50 mm x 50 mm	(2" x 2")
75 mm x 75 mm	(3" x 3")
86 mm x 86 mm	(3.4" x 3.4")

MODULE SIZES:

610 mm x 610 mm	(24" x 24")
914 mm x 914 mm	(36" x 36")
1219 mm x 1219 mm	(48" x 48")





SIMPLEX®

CEILINGS

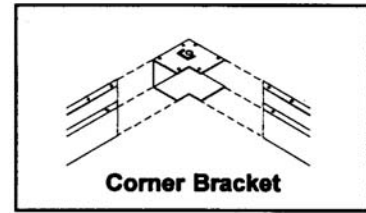
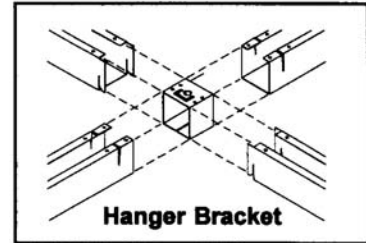
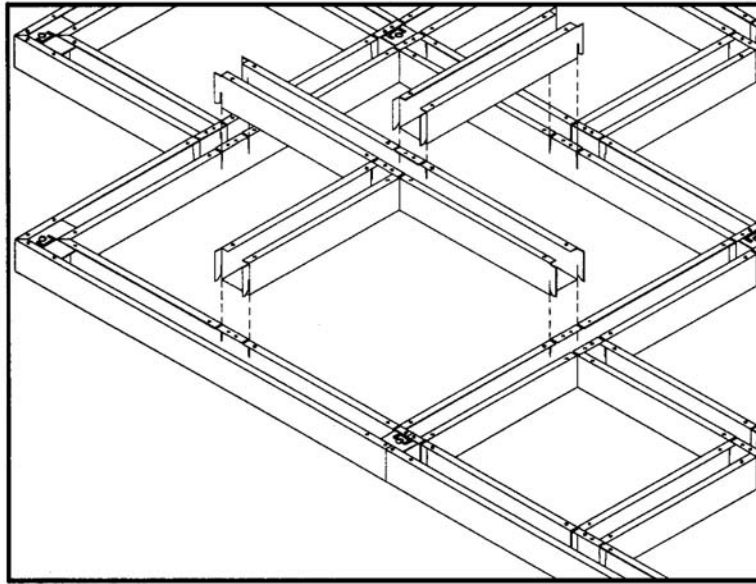
255 Montpellier, St. Laurent
 (Montreal) QC, Canada H4N 2G3
 Tel: (800) 638-5726 Fax (514) 744-2716
 www.simplexceilings.com

Specifications

Super-Cell Series

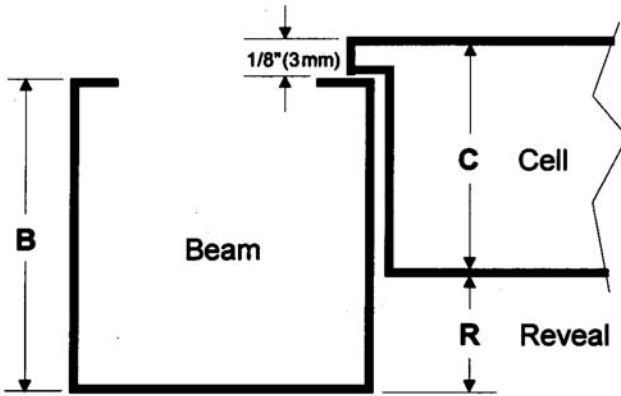
Combination of Beam & Open Cell 9-IG Series

REVEAL DETAILS



MODULE SIZES (Recommended)

24" x 24" 36" x 36" 48" x 48"
 (610 mm x 610 mm) (914 mm x 914 mm) (1219 mm x 1219)



BEAM HEIGHT (B)	CELL HEIGHT (C)		
	30mm (1-1/8")	40mm (1-9/16")	50mm (2")
2" (50 mm)	1" (25 mm)	1/2" (13 mm)	1/8" (3 mm)
3" (75 mm)	2" (50 mm)	1-1/2" (38 mm)	1-1/8" (30 mm)
4" (100 mm)	3" (75 mm)	2-1/2" (64 mm)	2-1/8" (54 mm)
REVEAL HEIGHT (R) (nominal dimensions)			

BEAM SIZES (Recommended)

2" x 2" 3" x 3" 4" x 4"
 (50 mm x 50 mm) (75 mm x 75 mm) (100 mm x 100)