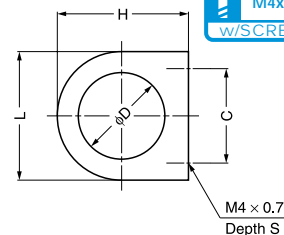
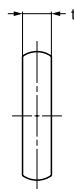


DR SERIES PULL

Material: 304 Stainless Steel

Finish: Mirror (M)
Satin (S)

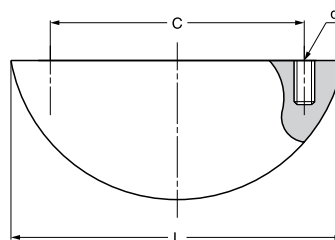


Item No.	L	C	H	t	D	S	Weight (g)	Box (pcs)	Carton (pcs)	
DR-S/M	DR-S/S	24.5 (31/32")	18 (45/64")	25	5.5	16.5	5	10	80	800
DR-L/M	DR-L/S	30.5 (1-13/64")	21 (53/64")	31.5	6.5	20.5	6	22	50	500

RD SERIES PULL

Material: 316 Stainless Steel

Finish: Mirror

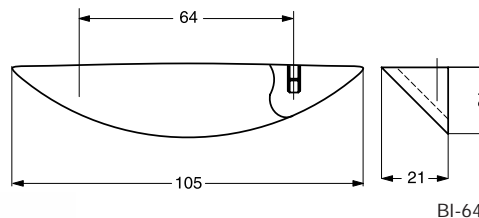
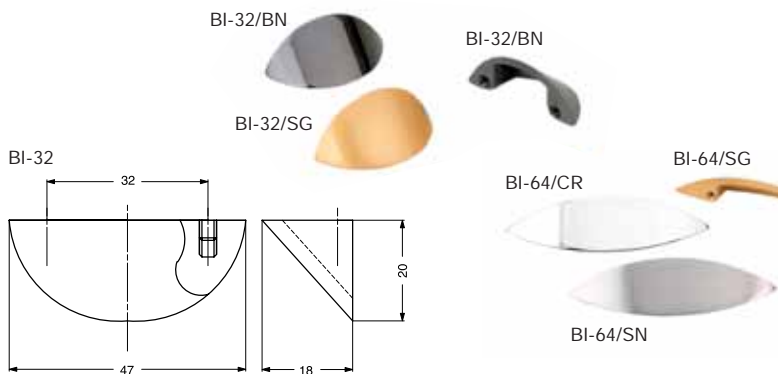


Item No.	L	C	H	B	d	Weight (g)	Box (pcs)	Carton (pcs)
RD-55/SM	55	42 (1-21/32")	23	9.5	M4x0.7	50	30	360
RD-90/SM	90	74 (2-29/32")	25.5	10.5	M4x0.7	80	20	240

BI SERIES PULL

Material: Brass

Finish: Black Nickel (BN), Satin Gold (SG), Chrome (CR), Satin Nickel (SN)



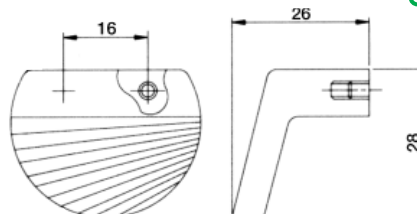
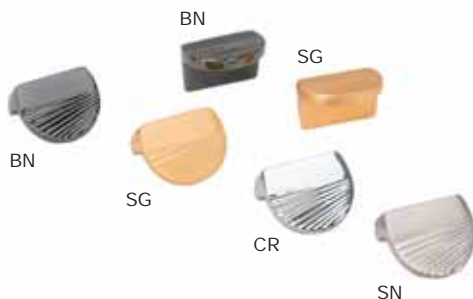
Please specify the finish when ordering

Item No.	Weight (g)	Box (pcs)
BI-32	25	20
BI-64	55	20

SH-16 SERIES PULL

Material: Brass

Finish: Black Nickel (BN)
Satin Gold (SG)
Chrome (CR)
Satin Nickel (SN)



Please specify the finish when ordering

Item No.	Weight (g)	Box (pcs)
SH-16	70	20