



Westmont™

1320V

19" x 17"

Wall-Mounted Lavatory



Features

- One-Piece Wall Hanger Included
- Drilled for Concealed Carrier Arms
- Meets ADA Requirements when Installed at 34" [864 mm] off the Floor
- Front Overflow
- Convenient Soap Depressions
- Available in White, Bone and Biscuit
- Limited Lifetime Warranty



Faucet not included

Model

Description

1320V	19" x 17" [483 mm x 432 mm] Rectangular, wall-mounted lavatory. 4" [102 mm] Faucet centers. Less faucet and supply.
-------	---



Specifications

Lavatory Dimensions: 19" x 17"

[483 mm x 432 mm]

Basin Dimensions: 14-1/4" x 10-3/8" x 5-5/8"

[362 mm x 264 mm x 143 mm]

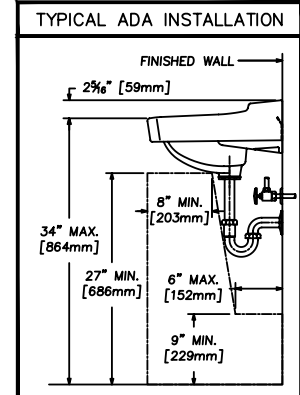
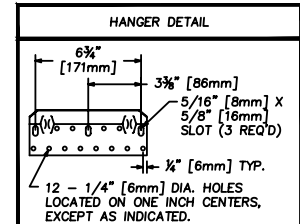
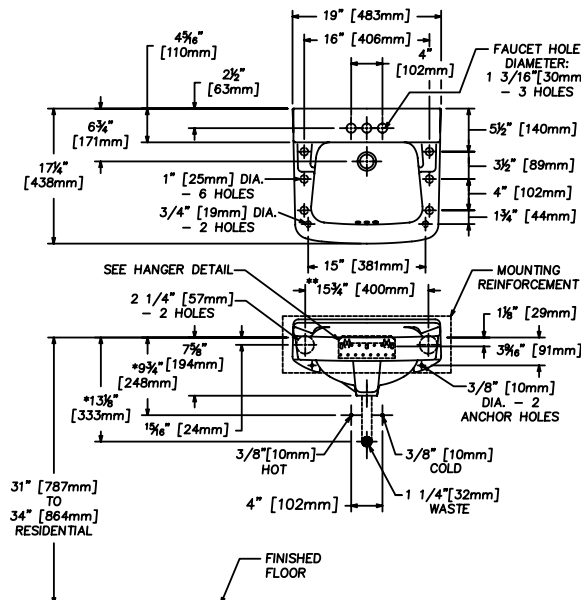
Faucet Center:

1320V: 4" [102 mm]

Shipping Cubes: 2.0 cf [.06 m³]

Shipping Weight: 28 lbs [12.7 kg]

Warranty: Limited Lifetime



NOTES: * SUGGESTED DIMENSION - VARIABLE DEPENDING ON TYPE OF SUPPLY AND WASTE.
 ** CARRIER ARM SPREAD IS 15-3/4\".

IMPORTANT: These dimensions are nominal and may vary within the range of tolerances established by ASME Standard A 112.19.2 Contact your local building code for approved barrier free measurements.

<p>Customer Service United States 41 Cairns Road Mansfield, OH 44903 Email: customerservice@craneplumbing.com</p>	<p>Customer Service Canada 15 Crane Ave. Stratford, ON N5A 6T3 Email: sales@craneplumbing.ca</p>
<p>www.craneplumbing.com</p>	<p>www.craneplumbing.ca</p>

