



**Low Consumption, Wall Outlet  
Water Closet Bowl**  
Vitreous China

**FEATURES**

• **3481 Sanwalton™**

**Bowl:** 3481 Sanwalton™ (1.6 gpf) siphon jet, elongated rim, angle flange, 1½" back spud wall, outlet bowl with integral seat.

**Valve:**\* Flushvalve with vacuum breaker, 1" screwdriver angle stop and flush connection. Suggested (1.6 gpf) flushvalves are:

- Sloan "Royal" #1431.5
- Delany "Flushboy" #F534-1.6
- Zurn "Aquaflush" #Z-6143WS-1

• **3484 Sanwalton™**

**Bowl:** 3484 Sanwalton™ (1.6 gpf) siphon jet, elongated rim, angle flange, 1½" back spud wall, outlet bowl punched with seat post holes.

**Valve:**\* Flushvalve with vacuum breaker, 1" screwdriver angle stop and flush connection. Suggested (1.6 gpf) flushvalves are:

- Sloan "Royal" #143-1.5
- Delany "Flushboy" #F534-1.6
- Zurn "Aquaflush" #Z-6143-WS-1

**Supply:**

**Seat:**

**Color:**

**NOTES**

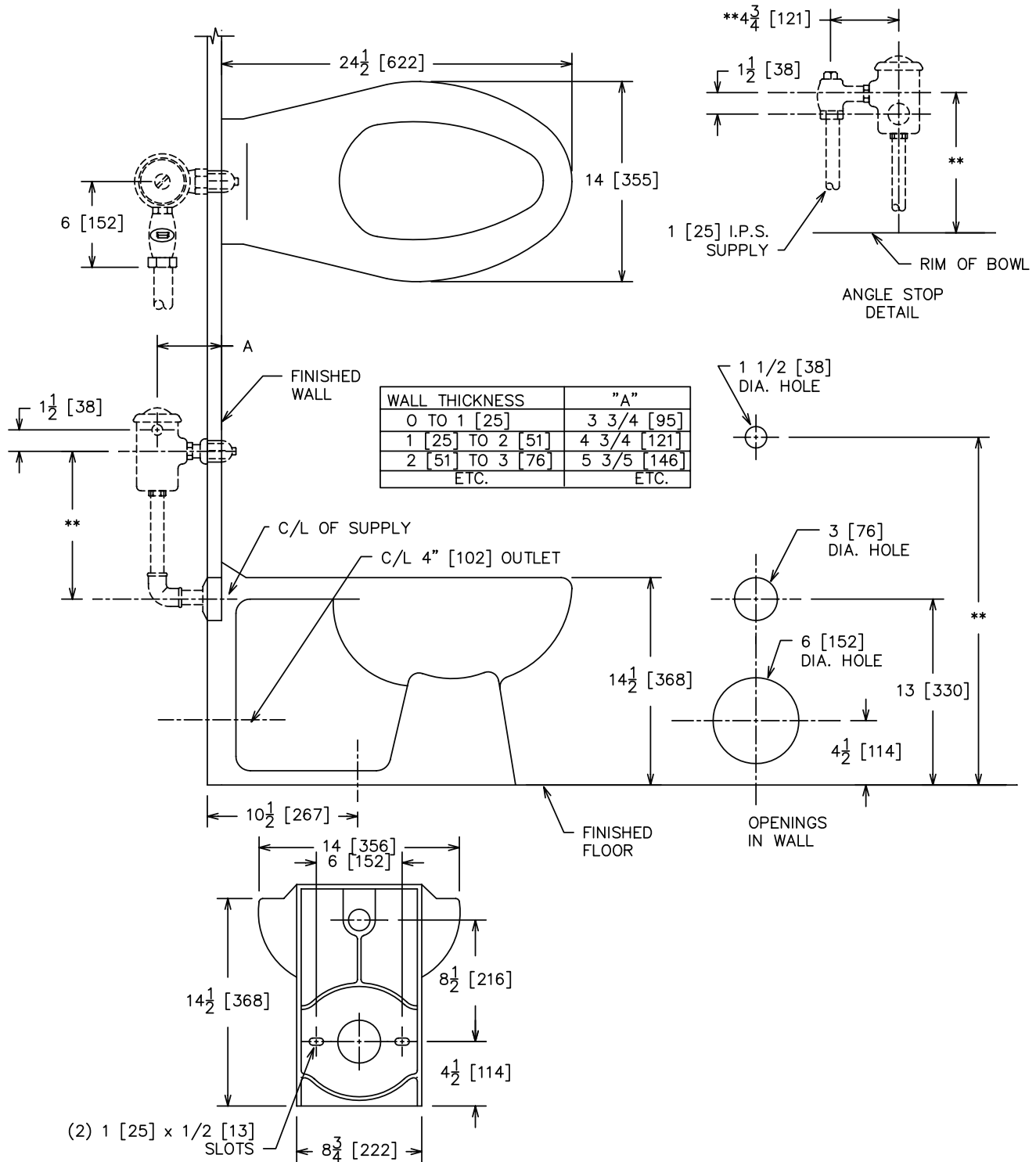
- Fixture conforms to ANSI/ASME A112.19.2M standard.
- \*\* For efficient operation of the bowl, a minimum flowing water pressure of 25 P.S.I. is required at the valve.
- Fully glazed trapway.

**WATER ECONOMY FACTS**

Average Gallons Per Flush	**25 PSI	50 PSI	80 PSI
3481 Elongated Rim (gpf)	1.54	1.56	1.55
TRAPWAY.....	2"		
WATER SURFACE.....	12" x 9 ¼"		
WATER SEAL.....	2 ¼"		



\* Not furnished by CR/PL, L.L.C. Description for specification purposes only.



BACK VIEW

NOTE: ALTERNATE CHOICE: 3484, SAME AS ABOVE, EXCEPT WITH HOLES FOR SEAT INSTEAD OF INTEGRAL SEAT.

\* ROUGHING-IN FOR ANGLE STOP WHEN REQUIRED,

\*\* VARIABLE-CHECK WITH MANUFACTURER OF FLUSHVALVE FOR PROPER ROUGHING-IN DIMENSION.