



**Clayton™**

**1442H/V/S**  
 20" x 19" [508 mm x 483 mm],  
 Commercial, Wall-Mounted Lavatory



**Features**

- Quality Vitreous China
- Durable and Easily Maintained Finish
- Anti-Splash Rim and 4" High Backsplash
- Concealed Front Overflow
- Available in Single Hole, 4" [102 mm] and 8" [203 mm] Faucet Centers
- One-Piece Wall Hanger Included
- Drilled for Concealed Carrier Arms
- Designed to Meet ADA Handicapped Guidelines with Mounting Height Set at 34" [864 mm] Above Finished Floor
- Available in White, Bone and Biscuit Colors
- Limited Lifetime Warranty



**Model # Description**

1442H	20" x 19" [508 mm x 483 mm] Wall-mounted lavatory. Single hole faucet center. Less faucet, drain assembly and supply. Specify additional drillings if required.
1442V	Same as 1442H, except with 4" (102 mm) faucet centers.
1442S	Same as 1442H, except with 8" (203 mm) faucet centers.



## Specifications

**Lavatory Dimensions:** 20" x 19"

[508 mm x 483 mm]

**Basin Dimensions:** 14-3/4" x 10-5/8" x 8-1/4"

[375 mm x 270 mm x 209 mm]

**Faucet Center:**

1442H: Single Hole

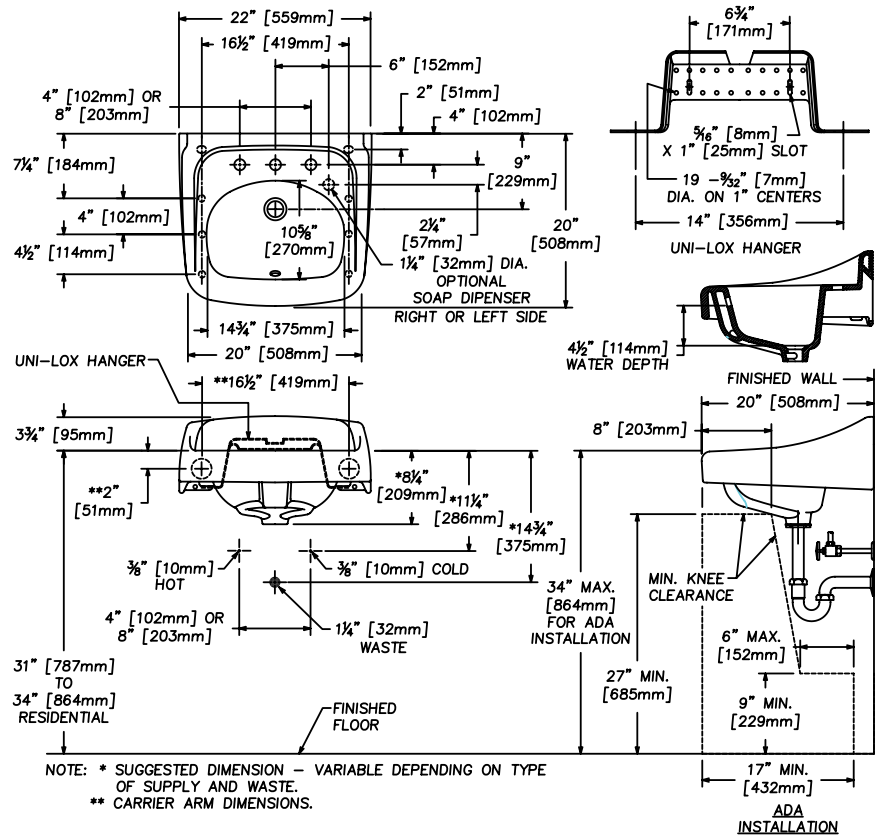
1442V: 4" [102 mm]

1442S: 8" [203 mm]

**Shipping Cubes:** 3.7 cf [0.10 m<sup>3</sup>]

**Shipping Weight:** 42 lbs [19 kg]

**Warranty:** Limited Lifetime



**IMPORTANT:** All fixture dimensions are nominal and may vary within the range of tolerances established by ASME/ANSI Standard A112.19.2M. All measurements shown are subject to change or cancellation. Dimensions in parentheses are in millimeters [25.4 mm = 1 inch]. Contact your local building code for approved barrier free measurements.

<p>Customer Service United States          41 Cairns Road          Mansfield, OH 44903          Email: <a href="mailto:customerservice@craneplumbing.com">customerservice@craneplumbing.com</a></p>	<p>Customer Service Canada          15 Crane Ave.          Stratford, ON N5A 6T3          Email: <a href="mailto:sales@craneplumbing.ca">sales@craneplumbing.ca</a></p>
<p><a href="http://www.cranepumbing.com">www.cranepumbing.com</a></p>	<p><a href="http://www.cranepumbing.ca">www.cranepumbing.ca</a></p>

