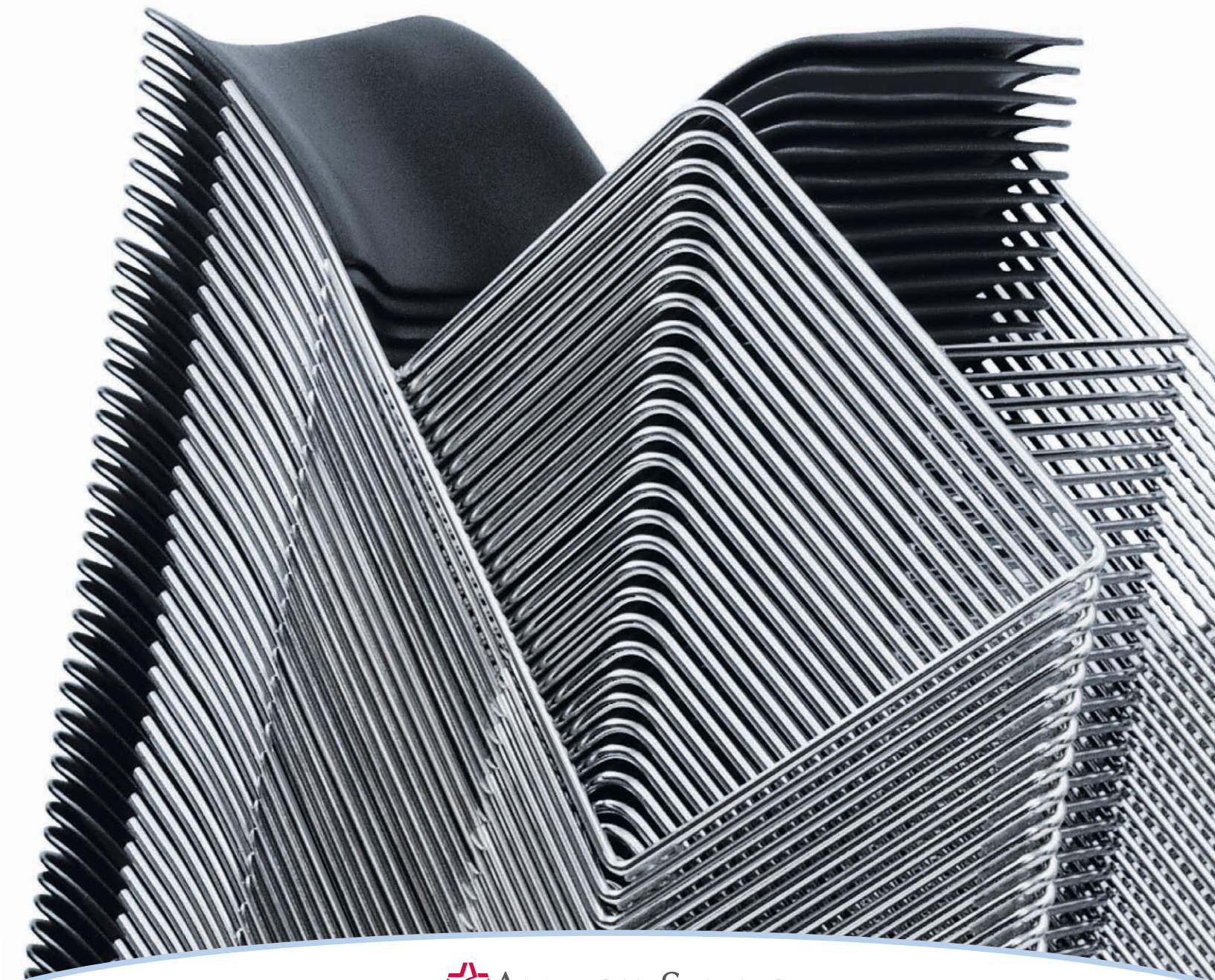


## The Original 40/4 Stack Chair

Offered in Joint Partnership with OSI





## a classic stack chair design



**Glides:** Four clear polymer glides are added to the bottom of the frame.

**Finish:** A TIGER Drylac fine texture powder coat is applied to hide fingerprints and enhance user comfort.

**Steel frame:** 7/16" solid rod, chrome plated or black powder-coat finish.

It's sleek, dramatic and it's art. **The Original 40/4** is designed by David Rowland® and offered in joint partnership with OSI Furniture, LLC. This stackable seating solution has paved the way for other high-density stack chair solutions to follow. The combination of straight lines and subtle contours allow for a contemporary or classic finish. Married with exceptional durability, it's perfect for meeting rooms, classrooms, training centers, cafeterias, waiting areas and more.

**Steel seat and backrest:** Contour formed with a 3/16" rolled-rim edge for safe handling and finished appearance.

**Seat and back contours:** Ergonomically sculpted seat and back for optimal support.

**Safety and durability:** All chairs meet or exceed all applicable ANSI/ BIFMA test standards.



**Steel:** A classic textured finish that is cost-effective, durable and easy to clean. Available in five popular colors. Non-standard finishes also available.

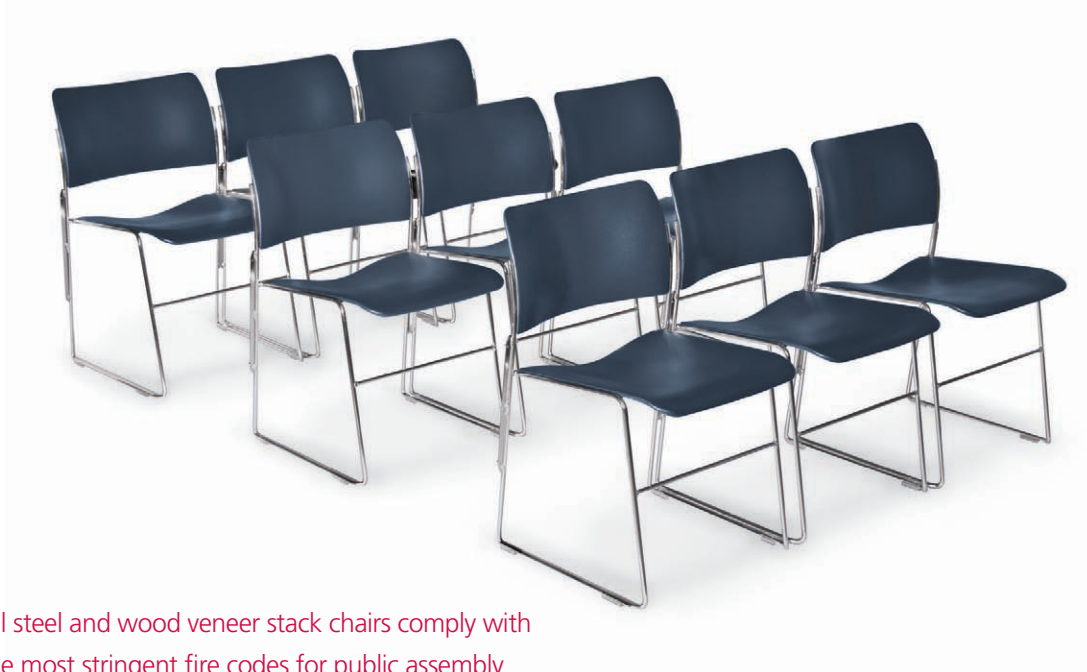


**Wood veneer:** For a rich appearance and design coordination. Available in seven finishes.



**Upholstery:** For added comfort and design flexibility, including foam seat and back padding and a fully upholstered back.

Choose from a variety of options and aesthetics to make the chair your own.



All steel and wood veneer stack chairs comply with the most stringent fire codes for public assembly areas, including California Technical Bulletin 133.

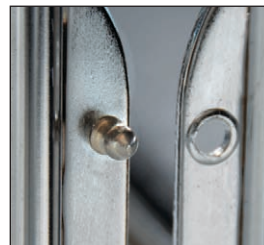
**Tablet arm:** Features a durable, mar-resistant laminate writing surface which folds away when not in use.

**Bookrack attachment:** No tools required for installation.

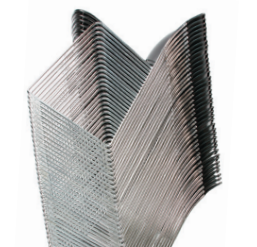
Tablet arm and book rack chairs can not be stacked and are recommended for use with a chrome finish for a long-lasting appearance.



**Ganging device:** Welded steel rear leg (permanently affixed to frame) and interlocking front glide assembly ensures straight rows and dependability.



**Chair dolly:** Steel structure in black finish, two fixed axle wheels and two swivel wheels, holds up to forty steel, forty wood or fifteen upholstered chairs. Stacked within a four foot envelope.



## Finishes

### Frame



C Chrome plated  
**10D**



B Black epoxy  
powder coat **10D**

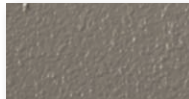
Products available to ship within ten business days are identified with **10D**.

Fabric: Momentum fabrics available.

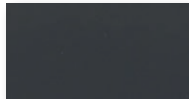
### Standard seat and back



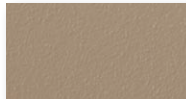
9005  
Jet Black **10D**



7039  
Quartz Grey **10D**



7024  
Graphite **10D**



1019  
Beige **10D**

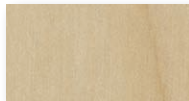


5008  
Blue **10D**

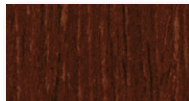
### Wood veneer



511  
Light Oak **10D**



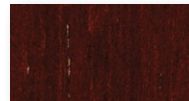
400  
Natural Maple **10D**



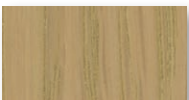
121  
Medium Walnut



521  
Medium Oak



161  
Dark Mahogany

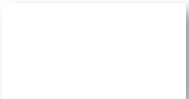


V03 Ivory  
(Colori finish)

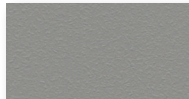


X04 Onyx  
(Colori finish)

### Contour tablet arm



0114  
Glacier White



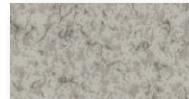
0169  
Storm (Grey)



4007  
Cashmere Fibers



2062  
Solara Oak **10D**



4008  
Concrete Fibers




0109  
Black Matte **10D**

Since 1886, American Seating has set the standard for product design, durability and comfort. Today, we remain committed to exceeding the expectations of our customers. Our achievements serve as the platform for new and innovative products that continue to be the benchmark of our industry.

 **AMERICANSEATING**  
A History of Innovative > **SOLUTIONS**

401 American Seating Center  
Grand Rapids, MI 49504-4499  
Phone 616-732-6600 800-748-0268  
FAX 616-732-6401  
americanseating.com

 American Seating is committed to lessening our impact on the planet through responsible stewardship of our environment.

American Seating is a registered trademark of American Seating Company.  
Form No. A-40/4-10 Litho in USA



This is printed on FSC certified paper.