



 AMERICAN SEATING

Upholstery Fabrics by

**Momentum**

Grade 2

# Upholstery Fabrics

GRADE 2



Russo  
GLC Coin *E*



Russo  
GLE Mocha *E*



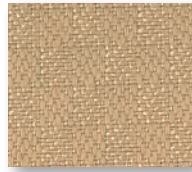
Perk  
GLW Dijon *E*



Perk  
GLS Sesame *E*



Expo  
GLK Latte *E*



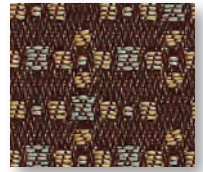
Insight  
GKR Blond *E*



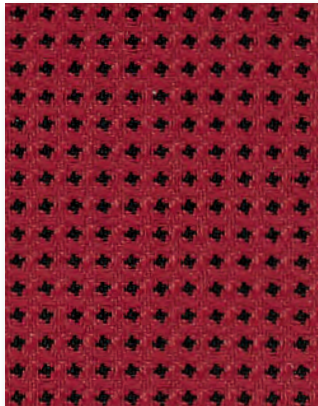
Context  
FKT Twig *E*



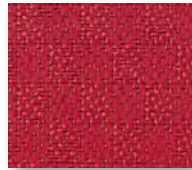
Pivot  
GKC Trail *E*



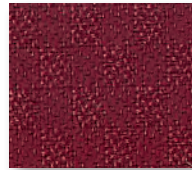
Jargon  
FKC Coconut *E*



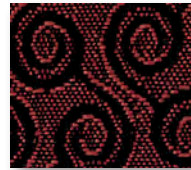
Expo  
GKL Festive *E*



Insight  
GK0 Real Red *E*



Insight  
GK2 Port *E*



Pivot  
GKE Garnet *E*



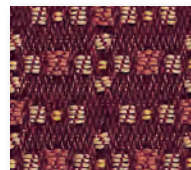
Pivot  
GKF Mesa *E*



Context  
FKQ Mulberry *E*



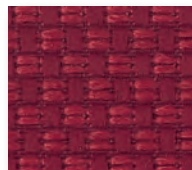
Russo  
GLB Ascot *E*



Jargon  
FKG Russet *E*



Context  
FKM Fall Song *E*



Perk  
GL1 Crimson *E*



Perk  
GLY Auburn *E*



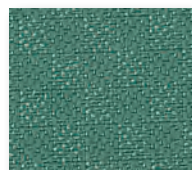
Jargon  
FKB Cayenne *E*



Pivot  
GKB Pesto *E*



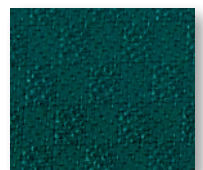
Expo  
GKK Leaf *E*



Insight  
GKV Jade *E*



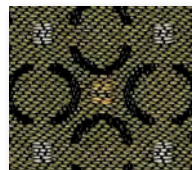
Insight  
GKU Fauna *E*



Insight  
GKW Forest *E*



Jargon  
FLD Kale *E*



Context  
FKR Refresh *E*



Russo  
GLD Trellis *E*



Russo  
GLG Mirror *E*



Russo  
GLF Imperial *E*



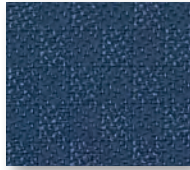
Perk  
GLT Cedar *E*



Jargon  
FKF Peacock *E*



Insight  
GKQ Midnight *E*



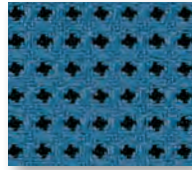
Insight  
GKS Periwinkle *E*



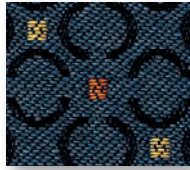
Pivot  
GKA Lagoon *E*



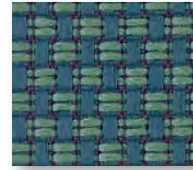
Perk  
GL2 Patriot *E*



Expo  
GKH Sky *E*



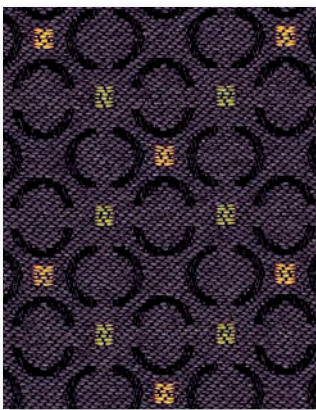
Context  
FKP Lake *E*



Perk  
GLU Cabana *E*



Jargon  
FKE Nautica *E*



Context  
FKN Jam *E*



Pivot  
GKD Orchid *E*



Expo  
GKM Viola *E*



Perk  
GLX Regal *E*



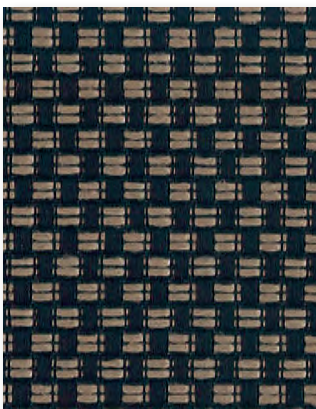
Insight  
GKX Eggplant *E*



Insight  
GKY Concord *E*



Context  
FKV Skylar *E*



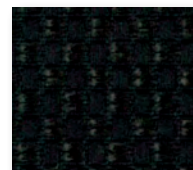
Perk  
GLV Walnut *E*



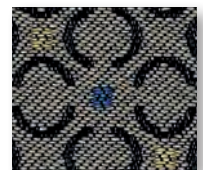
Perk  
GL3 Pewter *E*



Perk  
GL0 Flint *E*



Perk  
GL4 Ebony *E*



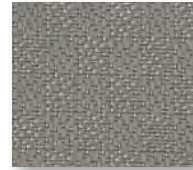
Context  
FKL Cement *E*



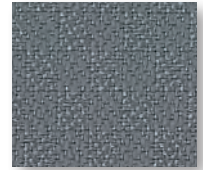
Russo  
GLH Shadow *E*



Jargon  
FKA Spiffy *E*



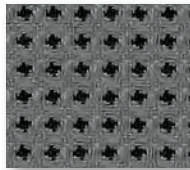
Insight  
GKT Fossil *E*



Insight  
GK1 Summit *E*



Insight  
GK3 Ebony *E*



Expo  
GKN Fog *E*



Expo  
GKP Tuxedo *E*



Pivot  
GKG Tower *E*

## Grade 2

### Essentials Program

All fabrics in this collection are available for **Essentials**, American Seating's quick-ship program, denoted with an *E*.

### Customer's Own Material (COM)

Customers may specify COM fabric line for use on American Seating products. Samples of the COM line must be submitted to American Seating prior to order placement. Your American Seating sales representative or dealer can provide exact procedures for approval of a COM fabric.

### Dye Lot Variance

American Seating employs specific quality control procedures in the acceptance of all fabric lines. Industry-wide color tolerances allow for slight dye lot variations among fabric runs.

#### RUSSO

##### Grade Level 2

##### 45% Rayon, 55% Polyester

Weight 0.62 lb per linear yard  
Width 58"  
Directional Yes  
Backing Yes - Acrylic  
Flammability CA Bulletin 117 Sec. E  
UFAC Class 1  
NFPA 260  
  
Abrasion  
Resistance 33,000 double rubs  
Light Fastness AATCC16A Class 5.0; 40 hours  
Surface Finish Soil and stain resistance  
Cleaning Code WS

#### EXPO

##### Grade Level 2

##### 65% Post Industrial Recycled Polyester 35% Post Consumer Recycled Polyester

Weight 0.34 lb. per linear yard  
Width 54"  
Directional No  
Backing Yes - Acrylic  
Flammability CA Bulletin 117 Sec. E  
UFAC Class 1  
NFPA 260  
  
Abrasion  
Resistance 102,000 double rubs  
Light Fastness AATCC16A Class 5.0; 40 hours  
Surface Finish Soil and stain resistance  
Cleaning Code S

#### PIVOT

##### Grade Level 2

##### 100% Polyester

Weight 0.81 lb. per linear yard  
Width 54"  
Directional No  
Backing Yes - Acrylic  
Flammability CA Bulletin 117 Sec. E  
UFAC Class 1  
NFPA 260  
  
Abrasion  
Resistance 39,000 double rubs  
Light Fastness AATCC16A Class 5.0; 40 hours  
Surface Finish Soil and stain resistance  
Cleaning Code WS

#### CONTEXT

##### Grade Level 2

##### 65% Post Industrial Recycled Polyester 35% Post Consumer Recycled Polyester

Weight 0.64 lb. per linear yard  
Width 54"  
Directional No  
Backing Yes - Acrylic  
Flammability CA Bulletin 117 Sec. E  
UFAC Class 1  
NFPA 260

Abrasion  
Resistance 57,000 double rubs  
Light Fastness AATCC16A Class 4.0;  
40 hours  
Surface Finish Soil and stain resistance  
Environment Recycled fiber content  
Cleaning Code WS

#### PERK

##### Grade Level 2

##### 100% Polyester

Weight 0.98 lb. per linear yard  
Width 54"  
Directional No  
Backing Yes - Latex  
Flammability CA Bulletin 117 Sec. E  
NFPA 260

Abrasion  
Resistance 102,000 double rubs  
Light Fastness AATCC16A Class 5.0;  
40 hours  
Surface Finish Soil and stain resistance  
Cleaning Code WS

#### INSIGHT

##### Grade Level 2

##### 100% Polyester

Weight 0.75 lb. per linear yard  
Width 54"  
Directional No  
Backing Yes - Acrylic  
Flammability CA Bulletin 117 Sec. E  
UFAC Class 1  
NFPA 260

Abrasion  
Resistance 192,000 double rubs  
Light Fastness AATCC16A Class 5.0;  
40 hours  
Surface Finish Proprietary stain resistance  
Cleaning Code WS

#### JARGON

##### Grade Level 2

##### 100% polyester

Weight 0.80 lb. per linear yard  
Width 54"  
Directional No  
Backing Yes - Acrylic  
Flammability CA Bulletin 117 Sec. E  
UFAC Class 1  
NFPA 260

Abrasion  
Resistance 90,000 double rubs  
Light Fastness AATCC16A Class 4.0;  
40 hours  
Surface Finish Soil and stain resistance  
Environment Recycled fiber content  
Cleaning Code WS

S - Only pure, water-free solvents may be used.  
CAUTION: Use of water-based or detergent-based solvents may cause shrinking and/or permanent water stains.

WS - Clean with water-based cleaning agent, foam or pure, water-free solvents. Vacuuming or light brushing is recommended to prevent dust and soil build-up.

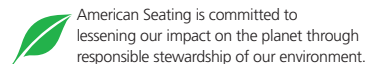
The printed colors on these pages are representative of our fabric offering. Actual material samples should be requested for final fabric selection.

Memo samples for projects available online at [memosamples.com](http://memosamples.com) or call 800.366.6839.



A History of Innovative > SOLUTIONS

401 American Seating Center  
Grand Rapids, MI 49504-4499  
Phone 616-732-6600 800-748-0268  
FAX 616-732-6401  
[americanseating.com](http://americanseating.com)



American Seating is a registered trademarks of American Seating Company.  
Form No. A-UM2.2-10 ©2010 American Seating Company Litho in USA

