



Upholstery Fabrics by

# Momentum

Grade 6



# Upholstery Fabrics

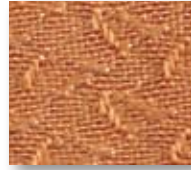
GRADE 6



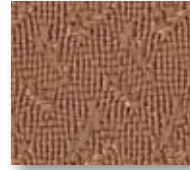
Intermix  
HWB Bisque



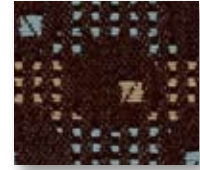
Solo2  
HP6 Sunshine



Solo2  
HP7 Honey



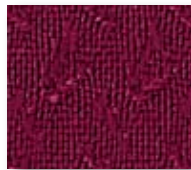
Solo2  
HPM Wheat



Verge  
FTG Hazelnut



Solo2  
HCV Currant



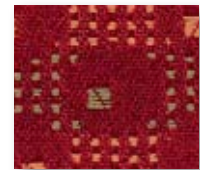
Solo2  
HP5 Chianti



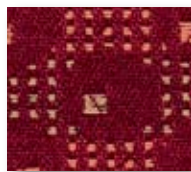
Intermix  
HWA Berry



Intermix  
HWC Flame



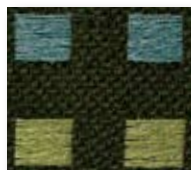
Verge  
FTC Molten



Verge  
FTD Beet



Verge  
FTF Living



Intermix  
HWE Olive

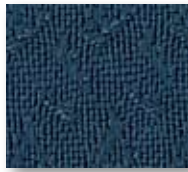


Solo2  
HPL Hunter

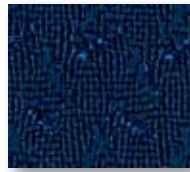




Verge  
FTB Denim



Solo2  
HCY Twilight



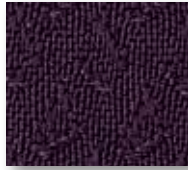
Solo2  
HCH Midnight



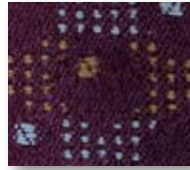
Solo2  
HCJ Periwinkle



Intermix  
HWF Midnight



Solo2  
HP4 Plum



Verge  
FTE Merlin



Solo2  
HCW Concord



Solo2  
HCU Gravel



Solo2  
HCX Ebony



Intermix  
HWD Pewter



Intermix  
HWG Smoke



Verge  
FTH Phantom

## Grade 6

### *Customer's Own Material (COM)*

Customers may specify COM fabric for use on American Seating products. Samples of the COM line must be submitted to American Seating prior to order placement. Your American Seating sales representative or dealer can provide exact procedures for approval of a COM fabric.

### *Dye Lot Variance*

American Seating employs specific quality control procedures in the acceptance of all fabric lines. Industry-wide color tolerances allow for slight dye lot variations among fabric runs.

#### **INTERMIX**

##### **Grade Level 6**

##### **100% Polyester**

Weight	0.68 lb. per linear yard
Width	54"
Directional	Yes
Backing	Yes - Acrylic
Flammability	CA Bulletin 117 Sec. E UFAC Class 1 NFPA 260
Abrasion	
Resistance	60,000+ double rubs
Light Fastness	AATCC 16E Class 5.0; 40 hours
Cleaning Code	S

S - Only pure, water-free solvents may be used.

CAUTION: Use of water-based or detergent-based solvents may cause shrinking and/or permanent water stains.

WS - Clean with water-based cleaning agent, foam or pure, water-free solvents. Vacuuming or light brushing is recommended to prevent dust and soil-buildup.

The printed colors on these pages are representative of our fabric offering. Actual material samples should be requested for final fabric selection.

Memo samples for projects available online at [memosamples.com](http://memosamples.com) or call 800.366.6839.

#### **SOLO2**

##### **Grade Level 6**

##### **100% Nylon**

Weight	.94 lb. per linear yard
Width	54"
Directional	Yes
Backing	Yes - Acrylic
Flammability	CA Bulletin 117 Sec. E UFAC Class 1 NFPA 260
Abrasion	
Resistance	100,000 double rubs
Surface Finish	Soil & stain resistant
Light Fastness	AATCC 16A Class 4.0; 40 hours
Cleaning Code	WS

#### **VERGE**

##### **Grade Level 6**

##### **6% Post Consumer Recycled Polyester**

##### **36% Polyester**

##### **58% Post Industrial Recycled Polyester**

Weight	0.64 lb. per linear yard
Width	54"
Directional	No
Backing	Yes - Latex
Flammability	CA Bulletin 117 Sec. E UFAC Class 1
Abrasion	
Resistance	81,000+ double rubs
Surface Finish	Teflon®
Light Fastness	AATCC 16A Class 4.0; 40 hours
Cleaning Code	S



A History of Innovative > **SOLUTIONS**

401 American Seating Center  
Grand Rapids, MI 49504-4499  
Phone 616-732-6600 800-748-0268  
FAX 616-732-6401  
[americanseating.com](http://americanseating.com)