

Upholstery Fabrics by
Guilford of Maine
Infinity® Grade 2



Xceed 5901-5019
GFW Mulberry



Xceed 5901-5039
GHV Merlot



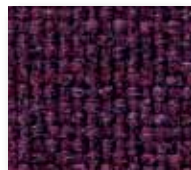
Xceed 5901-5017
GFT Mauve



Xceed 5901-5020
GFX Maroon



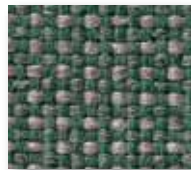
Xceed 5901-5033
GHN Spice



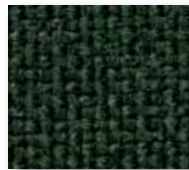
Xceed 5901-5035
GHQ Plum



Xceed 5901-5005
GFE Olive



Xceed 5901-5006
GFF Sage



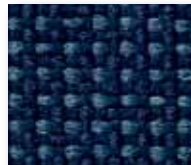
Xceed 5901-5027
GHG Forest



Xceed 5901-5011
GFL Wedgewood



Xceed 5901-5012
GFM Lapis



Xceed 5901-5031
GHL Harbor



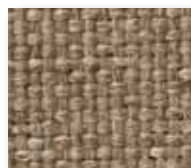
Xceed 5901-5009
GFJ Crystal



Xceed 5901-5032
GHM Navy



Xceed 5901-5002
GFB Hopscotch



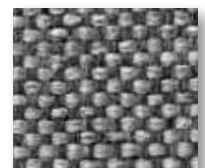
Xceed 5901-5001
GFA Wheat



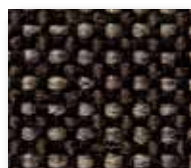
Xceed 5901-5004
GFD Ash



Xceed 5901-5021
GHA Mineral



Xceed 5901-5003
GFC Pewter



Xceed 5901-5022
GHB Black & Tan



Xceed 5901-5023
GHC Onyx



Xceed 5901-5024
GHD Ebony

Grade 2

Customers' Own Material (COM)

Customers may specify COM fabric for use on American Seating products. Samples of the COM line must be submitted to American Seating prior to order placement. Your American Seating sales representative or dealer can provide exact procedures for approval of a COM fabric.

Dye Lot Variance

American Seating employs specific quality control procedures in the acceptance of all fabric lines. Industry-wide color tolerances allow for slight dye lot variations among fabric runs.

Infinity Xceed 5901

Grade Level 2

100% Polypropylene

| | |
|----------------|------------------------------|
| Weight | 17.5 +/- 1.0 oz. lineal yard |
| Width | 54" |
| Directional | Yes |
| Backing | S.B.R. Latex |
| Flammability | CA Bulletin 117-E |
| Abrasion | |
| Resistance | 50,000 double rubs |
| Light Fastness | 200 hrs. min. |
| Cleaning Code | WS |

WS - Clean with water-based cleaning agent, foam or pure, water-free solvents. Vacuuming or light brushing is recommended to prevent dust and soil build-up.

The printed colors on these pages are representative of our fabric offering. Actual material samples should be requested for final fabric selection.

Memo samples available at 1.800.544.0200 or www.guilfordofmaine.com/samplecenter.



401 American Seating Center
Grand Rapids, MI 49504-4499
Phone 616-732-6600 800-748-0268
FAX 616-732-6401
americanseating.com