

# Dimension®

The Space-Saving, Versatile Solution  
for Lecture Halls, Stadiums,  
Arenas and Courtrooms



# The Flexible System That Maximizes Seating Capacity and Comfort.



## Dimension 674

Double-wall molded plastic seats and backs



## Dimension 675

Doubled-wall plastic seat and back shells with padded fabric seat and back inserts



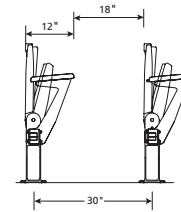
## Dimension 677

Fully upholstered seats and backs

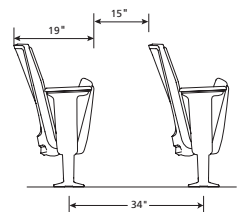
The ergonomic **Dimension®** chair models provide solutions that allow for more clearance space and increased accessibility behind unoccupied seats; an ideal product for environments that desire greater seating capacity within limited space.

The **674** and **675** models offer a three-quarter fold seat and an articulating back that moves to a 90° position when not in use, creating a slim envelope design that allows for more space than traditional fixed back seating solutions. Model **677** varies slightly from the **674** and **675** models with a natural recline that can be adjusted manually to an upright position.

Dimension Spacing



Traditional Spacing



- a. Double-wall molded plastic seat and back with padded fabric inserts  
Seat and back also available in all plastic or fully upholstered options

- b. Letter plates

- c. Donor plates

- d. Three-quarter fold seat hinge, and automatic or manual forward articulating back

- e. Number plates

- f. Wood and plastic armrests or armless models are available



Chair modules are interchangeable throughout the **Dimension** system, regardless of mounting style. Modules requiring replacement can be easily removed. Only one size module needs to be stocked, thus reducing inventories.



Fixed beam mounting for general seating or suite chairs



**Dimension's** articulating back offers increased accessibility behind unoccupied seats



## Enhance *Dimension*®'s Flexibility.



### A.D.A. Compliance

*Dimension* is designed to meet all of the accessibility compliance standards of the Americans With Disabilities Act (A.D.A.).



### Armrests

*Dimension* armrests are available in a plastic or wood arm cap.



### Seat/Row Identification

Donor plates, seat numbering and row letters are available.



### Folding Tablet Arms

Standard ( $12\frac{3}{8}" \times 13\frac{1}{8}"$ ) and oversized ( $15\frac{1}{8}" \times 13\frac{1}{8}"$ ) tablet arms available (standard shown). Tablet arms meet Life Safety Code (NFPA 101) and International Building Code.



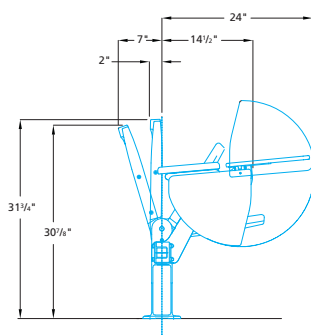
### Power and Data Raceways

U.L. listed raceway offers convenient access to power and data. The raceway includes one data port location and one simplex electrical outlet per chair providing power for up to twenty-six chairs per power feed.

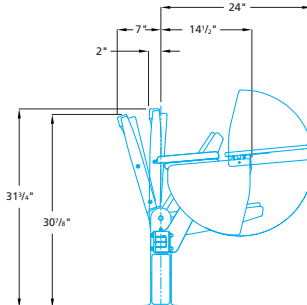


### Aisle Lights

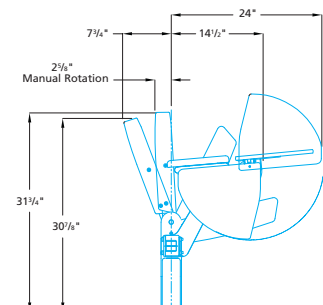
Light on end of beam directs soft glow downward.



674  
with standard tablet arm



675  
with standard tablet arm



677  
with standard tablet arm

Since 1886, American Seating has set the standard for product design, durability and comfort. Today, we remain committed to exceeding the needs of our customers. Our achievements serve as the platform for new and innovative products that continue to be the benchmark of our industry.



401 American Seating Center  
Grand Rapids, MI 49504-4499  
Phone 616-732-6600 800-748-0268  
FAX 616-732-6401  
[americanseating.com](http://americanseating.com)



This is printed on FSC certified paper.



American Seating and Dimension are  
registered trademarks of American Seating Company.  
Form No. A-DIM-09 ©2009 American Seating Company Litho in USA



American Seating is committed to  
lessening our impact on the planet through  
responsible stewardship of our environment.