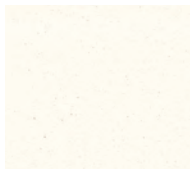




Office products and **Parley**<sup>®</sup> table legs – paint finish colors



A Pearl *E*



X Beige *E*



G Grey Taupe *E*



W Platinum *E*



Y Steel Grey *E*



O Dark Neutral *E*



H Black *E*



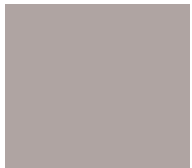
E Silver Nickel *E*  
(Table legs only)



5 Chrome  
(Table legs only)

Fixed seating – engineered plastics/paint finish colors

Available for **Spirit**<sup>®</sup>, **Stellar**<sup>®</sup>, **Majestic**<sup>®</sup> and **Dimension**<sup>®</sup>



0G Grey Taupe



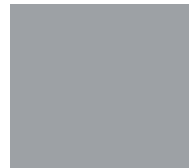
G3 Dark Burgundy



0V Dark Green



0U Navy



0W Platinum



0Y Steel Grey



00 Dark Neutral



0H Black

Sports finishes – engineered plastics/paint finish colors

Available for 406, 406-P, 406-S, 408, 408-P, 408-S, 505, 505-P, 505-S, 507, 507-P, 507-S Products



B8 Yellow



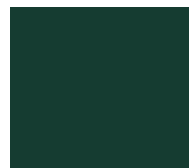
B2 Bright Orange



OP Crimson



B5 Green



VC Dark Green



VL Purple



D6 Yankee Blue



B1 Blue



D8 Midnight Blue



A2 Black

*E* indicates colors and finishes available through our **Essentials** quick-ship program.

The printed colors on these pages are representative of our color offering, and actual material samples should be requested for final finish and fabric selection. Minimum quantities apply to select colors.



# Laminates - worksurfaces, end panels and tablet arms

## Pattern laminates



D2 Shadow Zephyr *E*



D1 Desert Zephyr *E*



C6 Spiced Zephyr *E*



C9 Crisp Zephyr *E*



C7 Loden Zephyr *E*



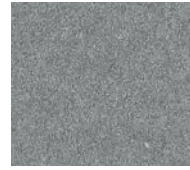
C5 Cloud Zephyr *E*



D3 Canyon Zephyr *E*



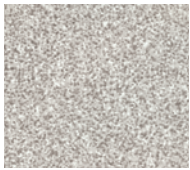
1N Twilight Zephyr *E*



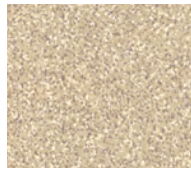
92 Misted Zephyr *E*



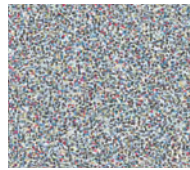
1P Morro Zephyr *E*



56 White Nebula *E*



8N Natural Nebula *E*



57 Cloud Nebula *E*



55 Grey Nebula *E*



09 Beige Crepe



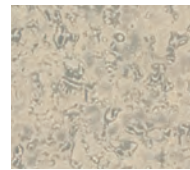
8W Caramel Crepe



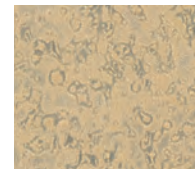
06 Stonedust Crepe



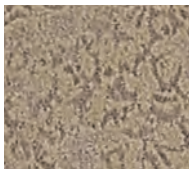
05 Opti Grey Crepe



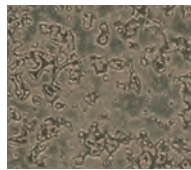
B8 Mission Stucco *E*



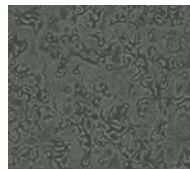
C1 Mission Sand *E*



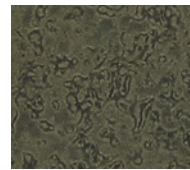
E3 Mission Stone *E*



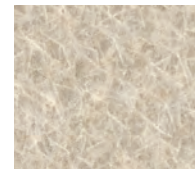
B7 Mission Shadow *E*



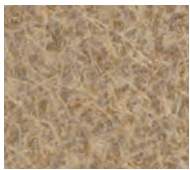
B6 Mission Smoke *E*



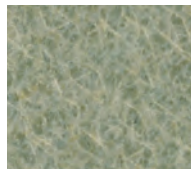
B9 Mission Sage *E*



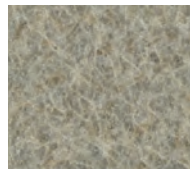
A4 Silicon EV *E*



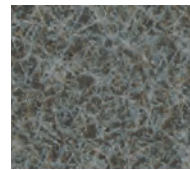
1R Tungsten EV *E*



A5 Radium EV *E*



A6 Nickel EV *E*



B1 Carbon EV *E*

EV = Evolve

E indicates colors and finishes available through our **Essentials** quick-ship program.

The printed colors on these pages are representative of our color offering, and actual material samples should be requested for final finish and fabric selection. Minimum quantities apply to select colors.

## Natural stone laminates



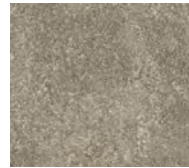
D8 Tan Soapstone *E*



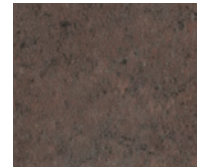
E2 Flame Soapstone *E*



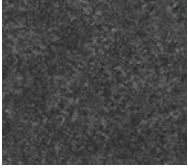
D9 Green Soapstone *E*



E1 Pearl Soapstone *E*



2K Sable Soapstone *E*



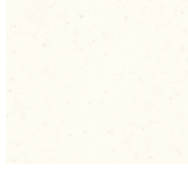
1G Oiled Soapstone *E*

## Metallic laminates

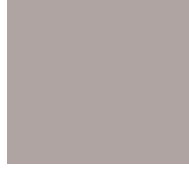


B5 Antique Bronze LS

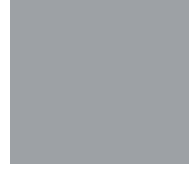
## Solid laminates



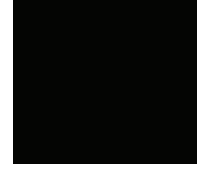
7A Pearl *E*



G4 Grey Taupe *E*



W6 Platinum *E*



75 Black *E*

## Edge moldings – worksurfaces, tables



A Pearl\* *E*



G Grey Taupe *E*



W Platinum *E*



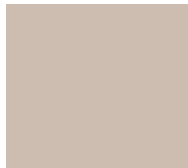
H Black\*\* *E*



O Dark Neutral *E*



Y Steel Grey *E*



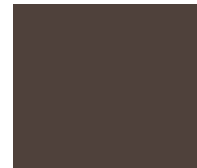
X Beige *E*



4 Butterscotch



P Brick Red



6 Dark Chocolate *E*

## **Focus**<sup>®</sup> – textured paint finish and molded urethane edge colors



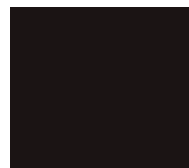
0G Grey Taupe



0W Platinum



0Y Steel Grey



00 Dark Neutral



0H Black

\* Pearl is not available on **Focus**.

\*\* Bullnose edge is only available in Black (H).

All 3mm edges are Polypropylene (PP), except Pearl (A), Dark Neutral (O), Butterscotch (4) and Brick Red (P) which are Polyvinyl Chloride (PVC).

LS = Luxury Solid

E indicates colors and finishes available through our **Essentials** quick-ship program.

The printed colors on these pages are representative of our color offering, and actual material samples

should be requested for final finish and fabric selection. Minimum quantities apply to select colors.

## Wood laminates



D7 Asian Sand



6Y Fusion Maple *E*



C4 New Age Oak *E*



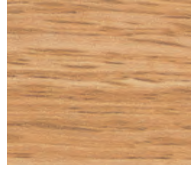
D5 Brazilwood *E*



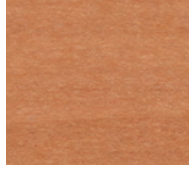
9M Bannister Oak *E*



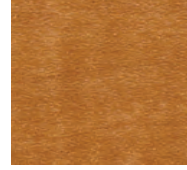
A2 Savoy Cherry



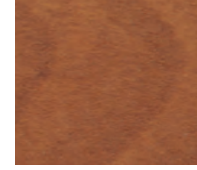
CM Castle Oak *E*



04 Pearwood *E*



CL African Limba



87 Wild Cherry *E*



CE Cherry Birch



A1 River Cherry *E*



D4 Mambo *E*



CG Biltmore Cherry *E*



6S Windsor Mahogany



4H Acajou Mahogany *E*



5D Empire Mahogany *E*

## Office and fixed seating – natural wood or veneers



M0 Clear Finish  
on Maple



R0 Clear Finish  
on Red Oak



5D Blonde  
Maple on Maple



5H Light Cherry  
on Maple



5B Medium Cherry  
on Maple



5C Dark Cherry  
on Maple



5E Dark Mahogany  
on Maple



ME Pigmented  
Dark Neutral  
on Maple



MF Pigmented Black  
on Maple

## Recommended wood laminates to compliment natural wood or veneers

Office and Fixed Seating- Natural Wood or Veneers	Recommended Wood Laminates
M0 Clear Finish on Maple	6Y Fusion Maple <i>E</i>
R0 Clear Finish on Red Oak	CM Castle Oak <i>E</i>
5D Blonde Maple on Maple	CL African Limba
5H Light Cherry on Maple	87 Wild Cherry <i>E</i> , CE Cherry Birch
5E Dark Mahogany on Maple	5D Empire Mahogany <i>E</i>

*E* indicates colors and finishes available through our **Essentials** quick-ship program.

The printed colors on these pages are representative of our color offering, and actual material samples should be requested for final finish and fabric selection. Minimum quantities apply to select colors.

**Acton**® shell and finishes are available on **Acton** finishes color specification sheet.

**Focus** Cachet® Swing-Away chair finishes are available on the **Focus**® fixed lecture solutions brochure.

Finish and plastic color samples are available to order on [americanseatinginfonet.com](http://americanseatinginfonet.com).

Custom finishes are available on some product lines. See price books for details.

Samples shown are provided as color guidelines only.

Actual colors may vary due to limitations inherent in the color matching process.

American Seating is proud to provide our customers with sustainable laminate offerings. All laminates are Forest Stewardship Council (FSC) certified (\*exceptions listed below). We are offering this sustainable option at no charge to our customers. Products with FSC certified laminates will have standard lead-times, and do not meet our **Essentials** lead-time.

\*Acajou Mahogany, African Limba, Cherry Birch are 75% FSC certified with plans in the near future to be 100% certified.


## Our Mission

Since 1886, American Seating has set the standard for product design, durability and comfort. Today, we remain committed to exceeding the expectations of our customers. Our achievements serve as the platform for new and innovative products that continue to be the benchmark of our industry.



401 American Seating Center, Grand Rapids, MI 49504-4499  
Phone 616-732-6600 800-748-0268 FAX 616-732-6401  
[americanseating.com](http://americanseating.com)

American Seating, Acton, Dimension, Focus, Majestic, Spirit, and Stellar are a registered trademarks of American Seating Company  
Cachet is a registered trademark of Steelcase Development Corporation.  
Form No. A-FIN3-11 ©2011 American Seating Company Litho in USA



American Seating is committed to lessening our impact on the planet through responsible stewardship of our environment.