



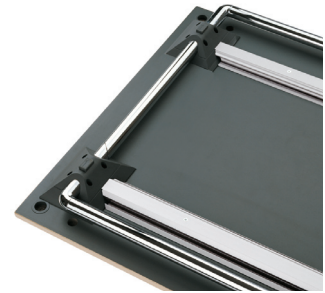
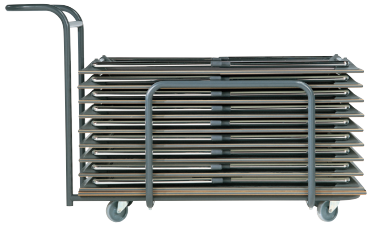
DESIGN BY KOMPLOT DESIGN 2002 • WWW.HOWE.COM/PLICO

PLICO

Whenever space-saving, easy handling and multi-functionality are paramount, the Plico table is the obvious solution. It is the ideal table for mealtimes, meetings, training and conferencing. A key design aspect of this table is its unique, concealed folding mechanism. The intuitive one-click system is a delight to operate and permits extremely simple, low stacking dimensions (each table takes up only 78 mm in height). The table's simple and elegant aesthetics make it compatible with other furniture styles.



HOWE



DESCRIPTION

4-legged densely stackable folding table for multi-purpose eating, meeting, training and conferencing applications.

PRODUCT DETAILS

TABLETOPS

15 mm chipboard when surface is veneer or laminate.

18 mm chipboard when surface is melamine.

VENEER VERSION

Natural wood veneer or stained wood veneer. 0,6 mm knife-cut sanded veneer on both sides. Total thickness of 16,2 mm. Standard finishes comes in maple, beech, oak, cherry, ash, birch, walnut and black stained ash.

LAMINATE VERSION

Coloured laminates or wood grain laminates. 0,8 mm laminate on both sides. Total thickness of 16,6 mm. Standard coloured laminates are HOWE grey, black, white and grey. Any Formica Colour System colour available. Standard wood grain laminates are maple, beech, oak, cherry, walnut and Punga Punga (wengé).

MELAMINE VERSION

Melamine surface on both sides. Total thickness of 18 mm. Standard melamine finishes are white, grey, HOWE grey, maple, beech, oak and walnut.

LINOLEUM VERSION

Linoleum surface (Forbo Desktop) on top and light brown paper on backside. Standard colour is black. Any Forbo Desktop colour available.

EDGES

Standard options include:

3 mm matching hardwood edge on veneer tabletops.

3 mm matching hardwood edge on wood grain laminate tabletops.

3 mm hardwood edge in beech on coloured laminate tabletops.

2 mm matching ABS edge on laminate, melamine and linoleum tabletops.



Edge with bumper (corner radius 10) in dark slate colour on veneer and laminate tops.

Open straight MDF-edge with transparent lacquer on linoleum tabletops.

BASES

Legs in round steel tube $\varnothing 30$ mm, 2 mm gauge. Steel quality according to norm DIN 2394., Fe content 97-98%. Leg corners in round high pressure die cast zinc tube $\varnothing 30$ mm. Subframe in 28 mm extruded aluminium profile on long sides, nature anodized. Base finish comes in chrome (20-50 μ).

GLIDES & CASTORS

As standard four adjustable glides $\varnothing 30$ mm made of HOWE grey plastic (PP). Adjustable up to 30 mm height. Two mono-directional castors in HOWE grey plastic (PP) concealed in glides on one end are optional. Two $\varnothing 50$ mm swivelling castors in HOWE grey plastic with black wheels and brakes on one end are optional.

MECHANISM

Folding mechanism embedded in plastic (PAA). Legs fold to a shifted position allowing flat storage. The legs are foldable with just one pull. Built-in lock system to secure automatic fixing of the legs when folded out Automatic fixing of the legs when folded. No need for leg retainer.

STACKING CAPACITY

Folded tables have a folding depth of 78 mm. 15 tables stack vertically within 1170 mm of height. Can be stacked vertically, on long side or on short side. The stacking bumper integrated in the design of the folding mechanism secure anti-scratch and anti-slide stacking.

DIMENSIONS AND WEIGHT

DIMENSIONS

The height of the table is 720 mm.



WEIGHT

1500 x 750 mm rectangular table with veneered tabletop weighs 28,4 kg.

STANDARD SHAPES & SIZES

RECTANGLES:

1200 x 600 mm

1400 x 700 mm

1500 x 750 mm

1600 x 800 mm

1800 x 900 mm

V-SHAPES:

1500 x 750 mm

HALF ELLIPTICAL:

1500 x 950 mm

HALF-ROUNDS:

1500 x 750 mm

1600 x 800 mm

Other sizes available, please contact HOWE a/s for further inquiries.

ACCESSORIES

CABLE CHANNEL in triangular shaped steel (1,2 mm gauge), coated in HOWE grey colour. To be clicked on the table's subframe. Attachable/detachable.

MODESTY PANEL in 3 mm green shaded acrylic mounted on two HOWE grey extruded aluminium hooks attached on the table frame or cable channel. Panel height is 350 mm.

LINKING BRACKETS in HOWE grey colour. 108 mm long and 24 mm wide plastic material (PP66), and bushes in POM. Linking bracket drilled and mounted in the tabletop's reverse side. Brackets will retract out of view when not in use.

TABLE TRANSPORTER made of steel frame \varnothing 40 mm. 19 mm MDF bed with bumper edge for protection. Powder coated in HOWE grey colour. Stores up to 15 tables. Height: 1172 mm, length: 1930 mm, depth: 810 mm.

Storage unit for modesty panels and cable channels optional. To be attached on the table transporter. Retrofittable. Coated in dark grey colour.



ERGONOMY & ENVIRONMENT

The Plico table is manageable for one person. With the castor versions no heavy lifts are required. All parts of the table can be dismantled and recycled.

TESTS

The Plico table has been subjected to the DS/EN 15372:2008, level 2 table strength and durability test. The table passed without damages or signs of beginning damages.

WARRANTIES

HOWE a/s gives a 5 years guarantee on all Plico tables against weld breakages, defective material, workmanship and performance under normal use. The guarantee is valid as from date of shipment. The HOWE warranty becomes invalid, if the product exhibits signs of abuse or improper handling or other physical damage. The HOWE warranty excludes those parts, which are subject to normal wear and tear in use.