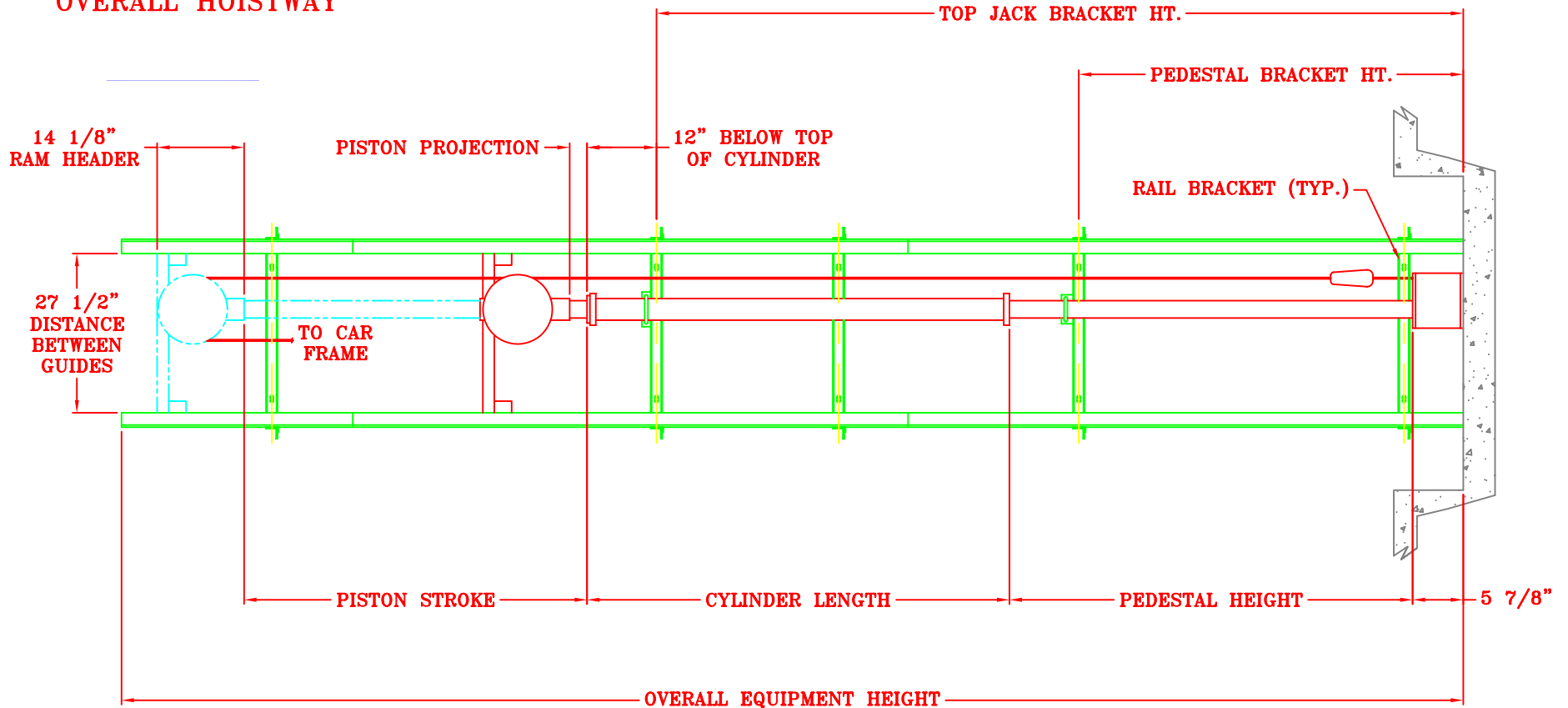


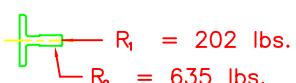
RAIL BRACKET	1	2	3	4	5	6
DISTANCE FROM FLOOR	6"	9'	17'	25'	33'	41'


REVISIONS			
LETTER:	DESCRIPTION:	DATE:	BY:
A	REVISED PIT LOAD AND RAIL FORCES	02/01/01	GEO.
B	REVISED FOR 601 CAR FRAME	3/31/04	MK.
C	REVISED FOR 601 CAR FRAME	8/3/04	MK.

### OVERALL HOISTWAY



### NOTES:

- MINIMUM OF FIVE BRACKETS PER UNIT. TWO BRACKETS ARE A SPECIAL DESIGN AND HOLD THE TOP OF THE PEDESTAL & THE TOP OF THE JACK.
- EACH RAIL SECTION SHALL HAVE A MINIMUM OF ONE RAIL BRACKET.
- BRACKET LOCATION MUST BE NO CLOSER THAN 8 INCHES TO A RAIL SPLICE. (FISH PLATE)
- 10'-0" MAXIMUM VERTICAL BRACKET SPACING FOR GUIDE RAIL.
- LOAD ON PIT FLOOR IS 4750 lbs.
- RAIL LENGTH MAXIMUM OF 8'-0".
- RAIL FORCES =   $R_1 = 202 \text{ lbs.}$   
 $R_2 = 635 \text{ lbs.}$
- 635 LBS. MAX. TENSION AND 202 LBS. MAX. SHEAR PER FASTENER.

 <b>WAUPACA ELEVATOR CO., INC.</b>		1726 North Ballard Road Appleton, WI 54911 Phone: 800-238-8739	
		Residential Elevators * Wheelchair-Compatible Elevators RESIDENTIAL AND COMMERCIAL DUMBWAITERS	
CUSTOMER:			
CONTRACTOR:			
TITLE:		HYDRAULIC EXCELEVATOR SHEET #2 "A" FRAME FIELD INSTALLATION	
QUOTE NUMBER:			
DRAWN BY:	SCALE:	DWG. NO.	
APPD:	DATE:	C-001640	