

# LINEAR

custom benches and tables

sarabi·studio  
handcrafted in austin texas



**Shown:**

2 - custom 16" H X 11" D X 14" L [C-1000BS]  
1 - Linear Cube 14" H X 14" D X 14" L [C-1000BS]



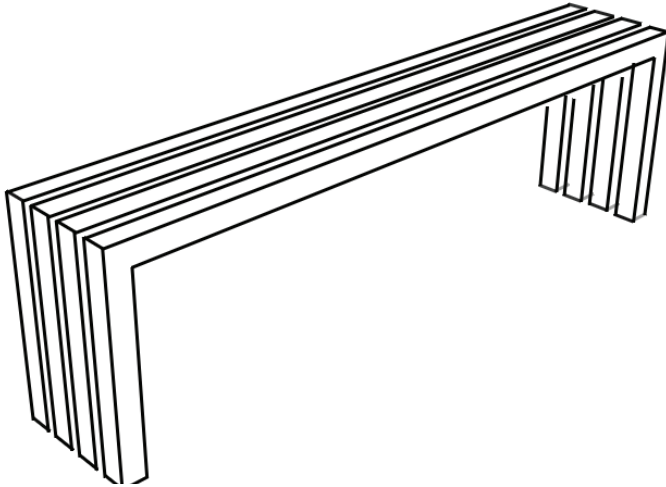
**Shown:**

1 - Linear Bench 18" H X 11" D X 58" W [S-1058BS]



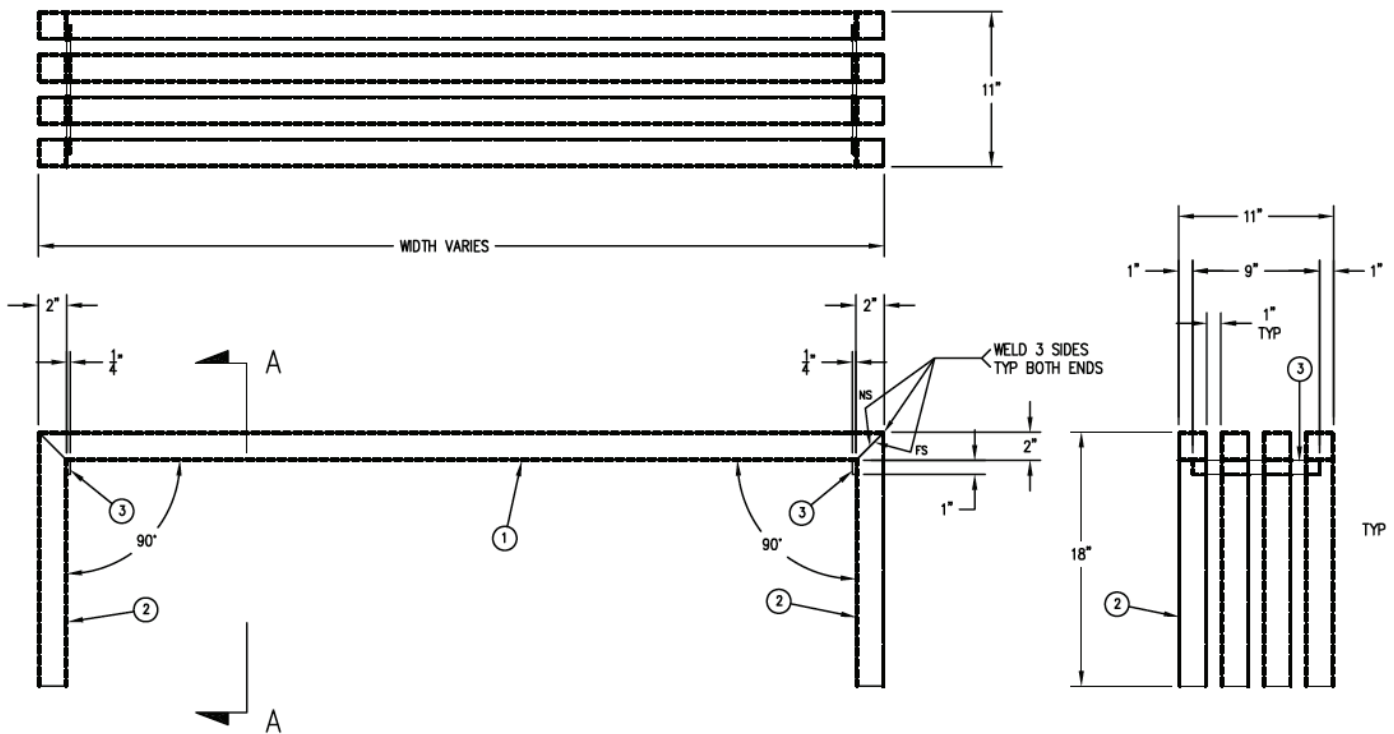
**Shown:**

3 - Linear Cube 14" H X 14" D X 14" L [C-1000BS]



## FEATURES

- Fully TIG Welded Construction
- Hand Finished #4 Brushed finish (SS model)
- Durable finish suitable indoors and out
- High impact floor protectors
- Permanent Installation Options
- Hand crafted in the USA (Austin, TX)



Model	Description	Color/Finish	Dimensions	Bolt Down	Epoxy Down
S-1058BS	58" Stainless Steel Bench	#4 Brushed	18" H X 58" W X 11" D		
S-1040BS	40" Stainless Steel Bench	#4 Brushed	18" H X 40" W X 11" D		
S-1058PC	58" Powder Coated Bench	Textured Black PC	18" H X 58" W X 11" D		
S-1040PC	40" Powder Coated Bench	Textured Black PC	18" H X 40" W X 11" D		
C-1000BS	Custom Stainless Steel Bench	#4 Brushed	18" H X ____ W X 11" D		
C-1000PC	Custom Powder Coated Bench	Textured Black PC	18" H X ____ W X 11" D		

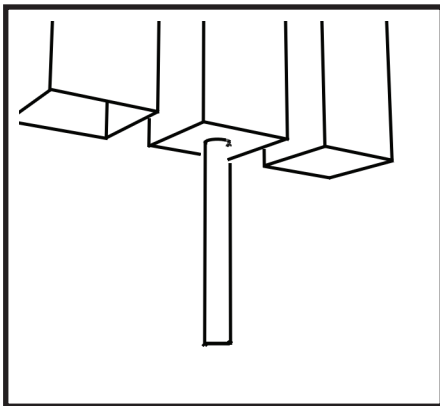
## Installation Options for Hospitality and Public Area use:

There are two custom installation options available for both the stainless steel and powder coated linear products.

**OPTION 1:** Visible mounting tab welded to the center of a single inside leg at each end of the item with a .25" hole pre-drilled to receive a anchor bolt.

**OPTION 2:** Welded 3" segment of all thread welded to one inside leg on each side. Each threaded rod is inserted into a pre drilled concrete substrate and anchored with anchoring epoxy (available option). The allthread rod is a 1/2" rod requiring at least a 5/8" hole be predrilled to allow for epoxy expansion.

Epoxy Mounting Option



Bolt Down Mounting Option

