

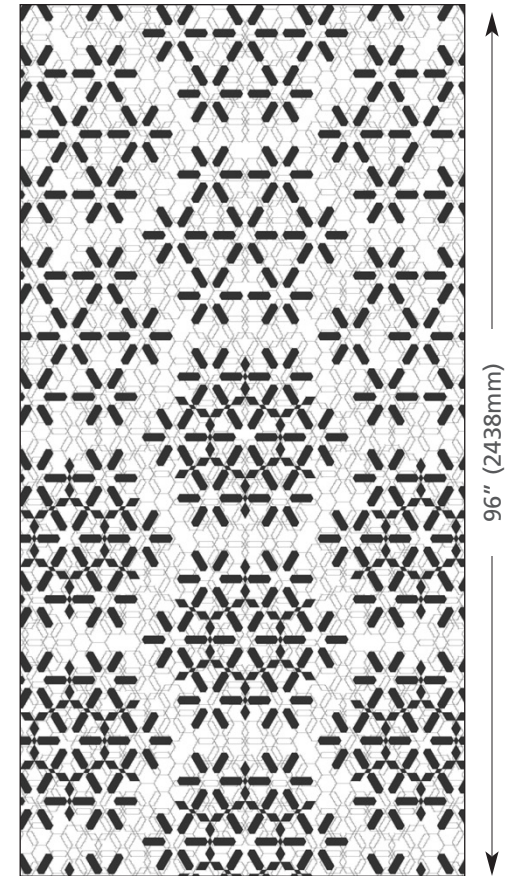
# Glassfile Designs

## Unity 1.5



<b>Glassfile design</b>	• Unity 1.5
<b>Design</b>	• Superimposition of repeating hexagonal pattern expressed through geometry and symmetry.
<b>Fabrication technique</b>	• Etched
<b>Maximum panel size</b>	• 48" wide x 96" high (call for oversized panels)
<b>Thickness available</b>	• 1/4" (6 mm) 3.27 lb/sq.ft • 3/8" (10 mm) 4.90 lb/sq.ft • 1/2" (12 mm) 6.64 lb/sq.ft • 5/8" (15 mm) 8.17 lb/sq.ft • 3/4" (19 mm) 9.81 lb/sq.ft
<b>Natural color</b>	• Clear float glass • Low iron glass – special request (virtually eliminates the green cast inherent in standard clear float glass)

<b>Panel finish available</b>	• All stock colors (transparent, frosted, opaque or sfumato). (Design etched on a colored background) • Custom colors (transparent, frosted, opaque, or sfumato) • Sandblast (10–100% frosted) • Carve
<b>Safety treatment</b>	• Temper • Laminate • Temper and laminate
<b>Design options</b>	• Shape – Cut • Drill • Notches
<b>Edge finish available</b>	• Flat machine polish • Arriss



48" (1219mm)

96" (2438mm)

This diagram is a representation only. Please refer to our web site or contact JBGS for additional information. All drawings and materials appearing herein constitute original and unpublished work of Joel Berman Glass Studios and may not be duplicated without prior consent of JBGS.