

Venetian Glass

ACCENT INNOVATIONS

- Venetian Glass is formed by fusing three layers of glass together
- Incorporates layer of hand-blown Italian Murano glass, allowing that no two pieces are the same.
- Venetian Glass has a deep, dimensional surface texture, capturing light in a unique fashion.

- Venetian Glass is easy to clean and maintain.
- Ideal as accents for wall installations, Venetian Glass provides customers with an expensive, sophisticated look for bathrooms, entries, or other applications.

Silver leaf / Mica / Blue Foil Series



VG124 Silver Leaf Swirl
2-7/8" x 2-7/8"



VG125 Textured Blue Foil
2-7/8" x 2-7/8"



VG126 Textured Mica
2-7/8" x 2-7/8"



VG127 Textured Silver Leaf Swirl
2-7/8" x 2-7/8"



VG123 Silver Leaf / Mica / Blue Foil Mosaic Liner Bar
1-7/8" x 7-7/8"



VG120 Blue Foil Liner Bar 1/2" x 7-3/4"



VG121 Silver Leaf Liner Bar 1/2" x 7-3/4"



VG122 Mica Liner Bar 1/2" x 7-3/4"

Silver Leaf / Crystal / Mica Series



VG104 Smoke Swirl
2-7/8" x 2-7/8"



VG105 Textured Crystal Green
2-7/8" x 2-7/8"



VG106 Textured Smoke Swirl
2-7/8" x 2-7/8"



VG107 Textured Mica
2-7/8" x 2-7/8"



VG103 Silver Leaf / Crystal Green/ Mica Mosaic Liner Bar
1-7/8" x 7-7/8"



VG100 Mica Liner Bar 1/2" x 7-3/4"

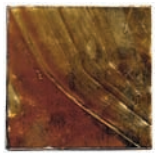


VG121 Silver Leaf Liner Bar 1/2" x 7-3/4"

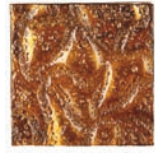


VG122 Mica Liner Bar 1/2" x 7-3/4"

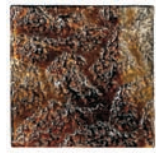
silver leaf / gold leaf / amber series



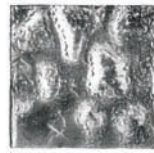
VG114 Cinnamon Swirl
2-7/8" x 2-7/8"



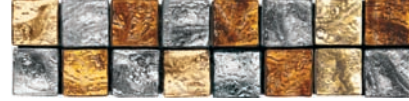
VG115 Textured Amber
2-7/8" x 2-7/8"



VG116 Textured Cinnamon Swirl
2-7/8" x 2-7/8"



VG117 Textured Silver Leaf
2-7/8" x 2-7/8"



VG113 Silver Leaf / Amber / Gold Mosaic Liner Bar 1-7/8" x 7-7/8"



VG110 Gold Leaf Liner Bar 1/2" x 7-3/4"

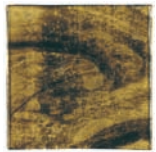


VG111 Silver Leaf Liner Bar 1/2" x 7-3/4"



VG112 Amber Liner Bar 1/2" x 7-3/4"

Bronze / Topaz / Citrine series



VG134 Light Smoke Swirl
2-7/8" x 2-7/8"



VG135 Textured Topaz
2-7/8" x 2-7/8"



VG136 Textured Light Smoke Swirl
2-7/8" x 2-7/8"



VG137 Textured Bronze
2-7/8" x 2-7/8"



VG133 Citrine / Topaz / Bronze Mosaic Liner Bar 1-7/8" x 7-7/8"



VG130 Citrine Liner Bar 1/2" x 7-3/4"



VG131 Topaz Liner Bar 1/2" x 7-3/4"



VG132 Bronze Liner Bar 1/2" x 7-3/4"



Sizes Available

Nominal Size	Actual Size	Metric (cm)	Thickness
3" x 3"	27/8" x 2-7/8"	7.5 x 7.5	5/16"

Product Performance

Bond Strength	>150 psi	ASTM C482
Break Strength	>500 lbs.	ASTM C648
Chemical Resistance	Unaffected	ASTM C650
Frost Resistance	Resistant	ASTM C1026
Scratch Hardness	3	MOH'S Scale

Recommended Usage

Crossville fused glass products are recommended for interior walls in residential and commercial applications.

Care and Maintenance

Regular cleaning is the best way to keep your fused glass accents looking new for years to come. Use clean, hot water (combined with a non-abrasive household cleaner for more aggressive cleaning). Rinse thoroughly and dry with a soft cloth to prevent water spots. No waxes or sealers are needed.

More information regarding the care and maintenance of Crossville glass products is available at www.crossvilleinc.com.

Shade & Texture Index

Venetian Glass has a shade variation of V2



V1—Uniform Appearance
V2—Slight Variation
V3—Moderate Variation
V4—Substantial Variation

V2 = Slight Variation

Clearly distinguishable texture and/or pattern within similar colors.

Wall Border Design:

Bronze/Topaz/Citrine Series: VG132 Bronze 1/2" x 8" Liner Bar, VG135 Textured Topaz 3" x 3", VG137 Textured Bronze 3" x 3" and VG130 Citrine 1/2" x 8" Liner Bar

Half Wall Design:

Bronze/Topaz/Citrine Series: VG134 Light Smoke Swirl 3" x 3". Crossville Porcelain Empire Series: VS82 Emperors Gold/Polished 20" x 20"

Floor:

Crossville Porcelain Empire Series: VS82 Emperors Gold/Polished 20" x 20"

Picture Frame Design:

Bronze/Topaz/Citrine Series: VG131 Topaz 1/2" x 8" Liner Bar, VG135 Textured Topaz 3" x 3", VG136 Textured Light Smoke Swirl 3" x 3" and VG137 Textured Bronze 3" x 3"