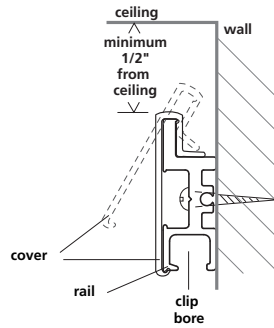
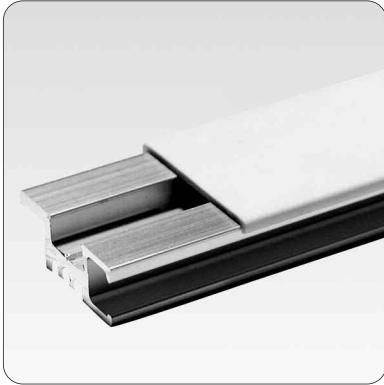


# CRE Rail



## Product Information

**cable size**  
3/64" 1.0 - 1.2 mm

**maximum weight**  
40 lbs. 18 kg

**function**  
wall-mount rail

**installation instructions**  
See "CRE Rail Mount & Assembly" below.

1

## CRE Rail

The CRE rail is an extruded aluminum rail with a clear finish. The rail is predrilled every 8" for ease of installation, but can be drilled to fit your framing studs. Included in the CRE package is an off-white cover (which can be painted to match your decor), screws for mounting into wood framing, an alignment pin for connecting adjoining rails, and end caps for a neat finish.

The CRE rail comes in lengths of 2' (CRE600), 3' (CRE900) and 6' (CRE 1800). The rails mount easily on walls, and can be joined for seamless coverage for longer spans. Arakawa clips attach to the rail at any location and can be moved horizontally along the rails.

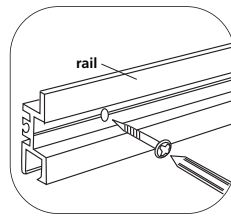
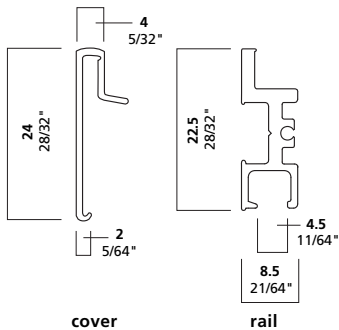


figure 1

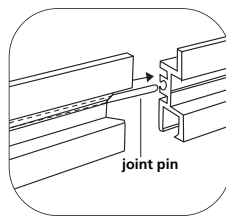


figure 2

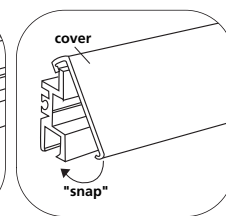


figure 3

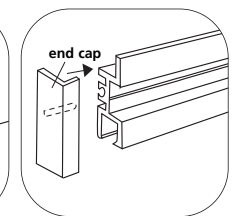


figure 4

## CRE Rail Mount & Assembly

### Step 1

Determine and mark desired location of the CRE rail(s). For best results, use a level. If you plan to run the track the full length of the wall, begin in the corner or the end of the wall. Mount the CRE rail with a minimum 1/2" clearance from the ceiling (figure 1). This will allow space for the cover to be placed over aluminum rail (Step 3).

### Step 2

Choose the appropriate rail length, (For custom lengths the rail and cover can be cut with any frame or miter box saw.) and attach the aluminum rail to the wall surface with provided screws (figure 1). If mounting to cement or masonry,

use appropriate anchors (not provided). If possible, mount to studs, or use sheetrock anchors (not provided). Connect rails with the provided joint pins (figure 2). When using alignment pin, there will be about 1/8" space between adjoining rails.

### Step 3

Simply fit the cover over the rail (figure 3) and press firmly until it snaps into place. Make sure it "snaps" into place, if it doesn't, cover will make rail clip installation more difficult. End caps (included) provide a neat finish (figure 4) for central wall installations and exposed corners. If desired, paint the cover with a latex paint to match your decor. Allow paint to dry.

### Arakawa Hanging Systems

2505 SE 11th Avenue, Suite 122  
Portland, Oregon 97202  
phone: 503.236.0440  
fax: 503.236.0427  
toll free: 888.272.5292

[www.arakawagrip.com](http://www.arakawagrip.com)



Copyright © 2007 Arakawa & Co., Ltd. All rights reserved. Arakawa products are covered by U.S. and foreign patents, issued and pending. Specification and price change privileges reserved.