

ELKAY® SPECIFICATIONS

Pacemaker® Single Bowl Sinks Models PSR and PSRQ Series, and PSRADQ – A.D.A. Compliant Series

GENERAL

Fine quality sink bowl formed of #20 gauge, type 304 (18-8) nickel bearing stainless steel. Self-rimming.

DESIGN FEATURES

Bowl Depth: 7-1/4" (PSRS(Q)3322), 7-1/2" (PSR(Q)2521 and PSR(Q)2522), 5-1/2" (PSRADQ1919), 7-1/8" (all others).

Coved Corners: 1-3/4" vertical and horizontal radius.

Bowl and Faucet Deck Recess: 3/8" (PSR(Q)2522); 3/16" (all others) below outside edge of sink.

Finish: Exposed surfaces are polished to a lustrous highlighted satin finish.

Underside: Fully undercoated to dampen sound and prevent condensation. PSR(Q)2521 and PSR(Q)2522 are fully protected by heavy duty Sound Guard® undercoating.

OTHER

Drain Opening: 3-1/2" (see back page for location).

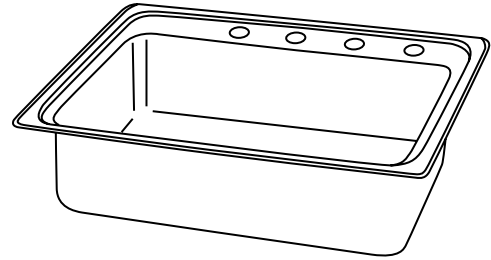
NOTE: Unless otherwise specified, models with one, two, three or OS4 faucet hole option are furnished with 3 faucet holes as standard; models with choice of one, two, three, four or five faucet hole option are furnished with 4 faucet holes as shown.

These sinks comply with ANSI Standard A112.19.3.

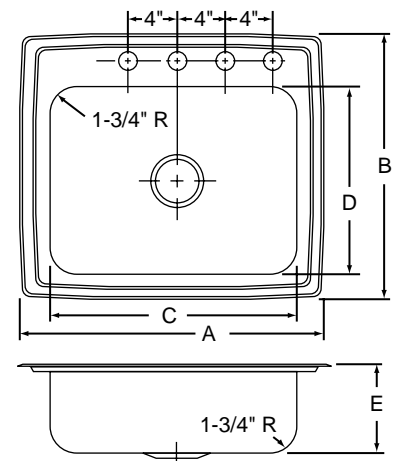
SINK DIMENSIONS (INCHES)*

| U-Channel Model Number | Quick-Clip® Model Number | Overall | | Inside Bowl | | | Cutout in Countertop (1 1/2" Radius Corners) | | No. of 1 1/2" Dia. Faucet Holes 4" Centers | Minimum Cabinet Size |
|------------------------|--------------------------|---------|--------|-------------|--------|-------|--|--------|--|----------------------|
| | | L | W | L | W | D | L | W | | |
| | | A | B | C | D | E | | | | |
| PSR1517 | PSRQ1517 | 15 | 17 1/2 | 12 | 12 | 7 1/8 | 14 3/8 | 16 7/8 | 1, 2, MR2 or 3 | 18 |
| PSR1716 | PSRQ1716 | 17 | 16 | 14 | 10 | 7 1/8 | 16 3/8 | 15 3/8 | 1, 2, MR2, 3 or OS4 | 21 |
| PSR1720 | PSRQ1720 | 17 | 20 | 14 | 14 | 7 1/8 | 16 3/8 | 19 3/8 | 1, 2, MR2, 3 or OS4 | 21 |
| PSR1722 | PSRQ1722 | 17 | 22 | 13 1/2 | 16 | 7 1/8 | 16 3/8 | 21 3/8 | 1, 2, MR2, 3 or OS4 | 21 |
| PSR1918 | PSRQ1918 | 19 | 18 | 16 | 11 1/2 | 7 1/8 | 18 3/8 | 17 3/8 | 1, 2, MR2, 3 or OS4 | 24 |
| PSR2219 | PSRQ2219 | 22 | 19 1/2 | 18 | 14 | 7 1/8 | 21 3/8 | 18 7/8 | 1, 2, MR2, 3, 4 or 5 | 27 |
| PSR2222 | PSRQ2222 | 22 | 22 | 19 | 16 | 7 1/8 | 21 3/8 | 21 3/8 | 1, 2, MR2, 3, 4 or 5 | 27 |
| PSR2521 | PSRQ2521 | 25 | 21 1/4 | 21 | 15 3/4 | 7 1/2 | 24 3/8 | 20 5/8 | 1, 2, MR2, 3, 4 or 5 | 30 |
| PSR2522 | PSRQ2522 | 25 | 22 | 21 | 15 3/4 | 7 1/2 | 24 3/8 | 21 3/8 | 1, 2, MR2, 3, 4 or 5 | 30 |
| PSR3122 | PSRQ3122 | 31 | 22 | 28 | 16 | 7 1/8 | 30 3/8 | 21 3/8 | 1, 2, MR2, 3, 4 or 5 | 36 |
| Not Available | PSRADQ191955L | 19 1/2 | 19 | 16 | 13 1/2 | 5 1/2 | 18 7/8 | 18 3/8 | 1, 2, MR2, 3 or OS4 | 24 |
| Not Available | PSRADQ191955R | 19 1/2 | 19 | 16 | 13 1/2 | 5 1/2 | 18 7/8 | 18 3/8 | 1, 2, MR2, 3 or OS4 | 24 |
| PSRS3322 | PSRSQ3322 | 33 | 22 | 28 | 16 | 7 1/4 | 32 3/8 | 21 3/8 | 1, 2, MR2, 3, 4 or 5 | 36 |

*Length is left to right. Width is front to back.



Model PSR(Q)25214



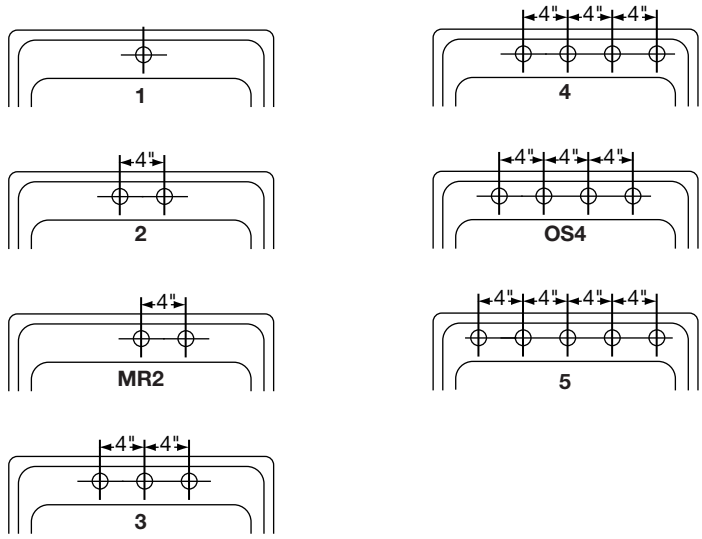
THIS PRODUCT, AS CONSTRUCTED IS SUBJECT TO INTERPRETATION OF A.D.A. REQUIREMENTS.
THE UNOBSTRUCTED KNEE SPACE REQUIRED TO SATISFY A.D.A. STANDARDS MAY NOT BE DESIRABLE.

ALL DIMENSIONS IN INCHES, TO CONVERT TO MILLIMETERS MULTIPLY BY 25.4.

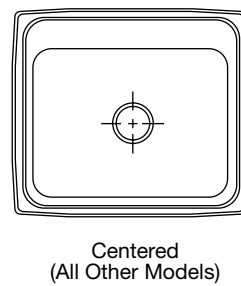
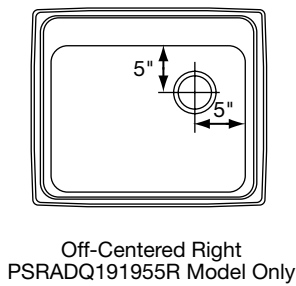
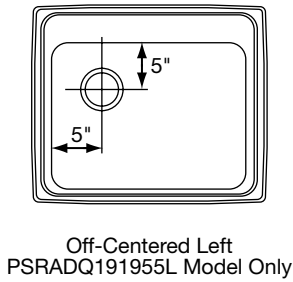
In keeping with our policy of continuing product improvement, Elkay reserves the right to change product specifications without notice.

This specification describes an Elkay product with design, quality and functional benefits to the user. When making a comparison of other producers' offerings, be certain these features are not overlooked.

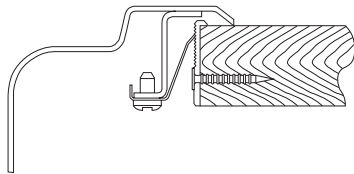
HOLE DRILLING CONFIGURATIONS



DRAIN OPENING LOCATIONS



Quick-Clip® Mounting System



U-Channel Type Mounting System

