

ELKAY[®]

SPECIFICATIONS

Lustertone[®] Undermount Single Bowl Sink Models ELU1616 and ELUH1616

GENERAL

Highest quality sink seamlessly drawn of #18 (1.2mm) gauge, type 304 (18-8) nickel bearing stainless steel. Underside of sink is fully protected by heavy duty Sound Guard™ undercoating.

DESIGN FEATURES

Bowl Depth: 7-7/8" (200mm).

Finish: Exposed surfaces are hand blended to a lustrous highlighted satin finish. ELUH1616 model has highlighted inside top bowl radius.

Underside: Underside of sink is fully protected by heavy duty Sound Guard™ undercoating to reduce condensation and deaden sound.

OTHER

Drain Opening: 3-1/2" (89mm).

Note: All Elkay custom design undermount sinks are designed to affix easily to the underside of any solid surface countertop.

Installation: See illustrated profile below.

OPTIONAL ACCESSORIES

Rinsing Basket: LKWRB1316SS.

Bottom Grid: LKWOBG1616SS.

Cutting Board: CBS1316 (ELUH1616), CB1713 (ELUH1616).

Drain Fitting: LK99.

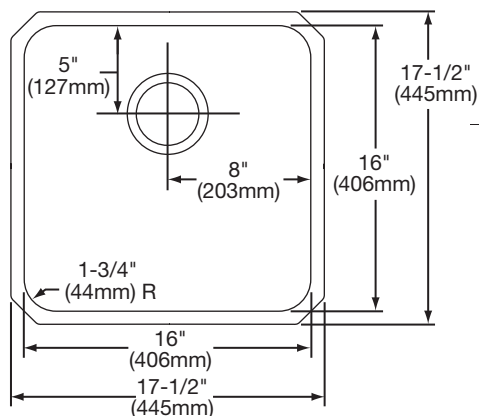
Recommended Cleaner: LKSB16EA.

SINK DIMENSIONS*

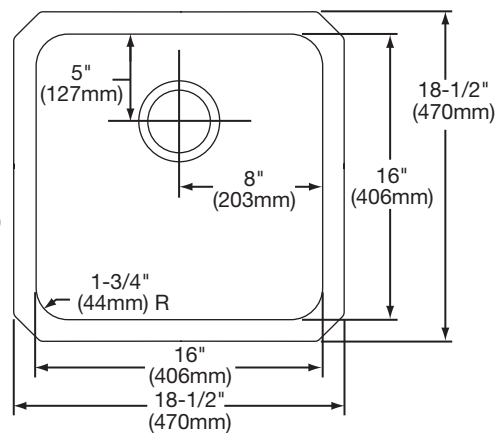
Model Number	Overall		Inside Bowl			Cutout in Countertop	Minimum Cabinet Size
	L	W	L	W	D		
ELU1616	17 1/2 (445mm)	17 1/2 (445mm)	16 (406mm)	16 (406mm)	7 7/8 (200mm)	See Template**	24 (610mm)
ELUH1616	18 1/2 (470mm)	18 1/2 (470mm)	16 (406mm)	16 (406mm)	7 7/8 (200mm)		24 (610mm)

*Length is left to right. Width is front to back.

**Template and countertop mounting clips are packed with every sink.



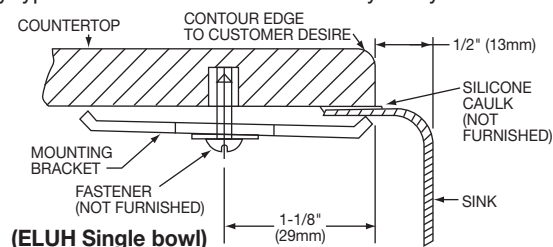
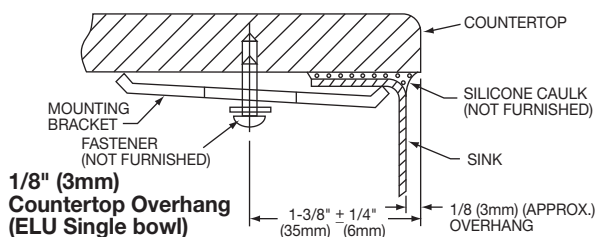
Model ELU1616 Illustrated



Model ELUH1616 Illustrated

Installation Profile of ELU and ELUH Single Bowl Models

The template provided with each ELU/ELUH sink provides the only type of installation recommended by Elkay.



In keeping with our policy of continuing product improvement, Elkay reserves the right to change product specifications without notice. Please visit elkayusa.com for most current version of Elkay product specification sheets.

This specification describes an Elkay product with design, quality and functional benefits to the user. When making a comparison of other producers' offerings, be certain these features are not overlooked.