

ELKAY® SPECIFICATIONS

Lustertone® Triple Bowl Sink Models LTR Series

GENERAL

Highest quality sink formed of #18 gauge, type 304 (18-8) nickel bearing stainless steel. Self-rimming.

DESIGN FEATURES

Bowl Depth: 10" (LTR542210, LTR632210), 7-1/2" (LTR4622).

Coved Corners: 1-3/4" vertical and horizontal radius.

Bowl and Faucet Deck Recess: 3/16" below outside edge of sink.

Finish: Exposed surfaces are hand blended to a lustrous highlighted satin finish.

Underside: Fully undercoated to dampen sound and prevent condensation.

OTHER

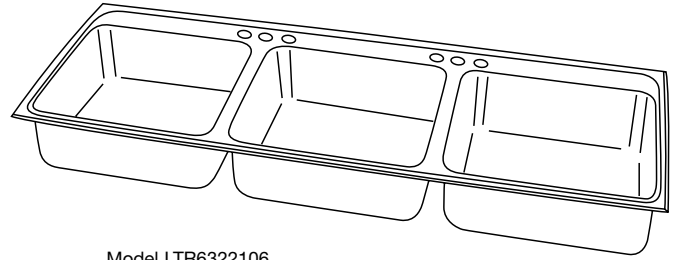
Drain Opening: 3-1/2".

NOTE: Unless otherwise specified, sink is furnished with 6 faucet holes. Two faucet sets are recommended for greatest utility.

These sinks comply with ANSI Standard A112.19.3.



These sinks are listed by the International Association of Plumbing and Mechanical Officials as meeting the requirements of the Uniform Plumbing Code.

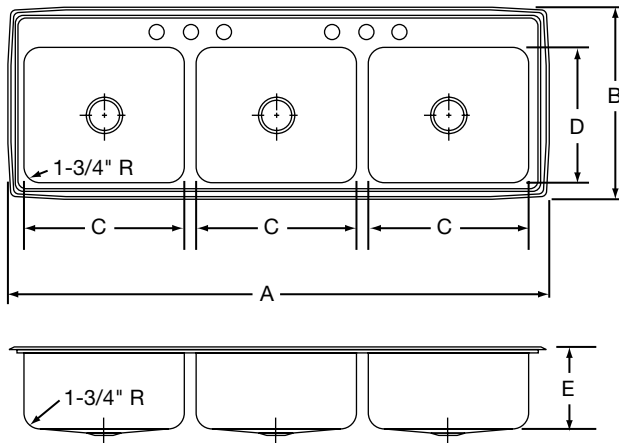


Model LTR6322106

SINK DIMENSIONS (INCHES)*

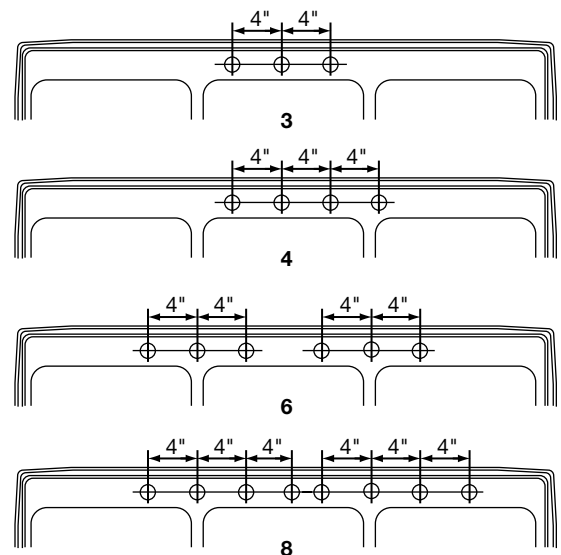
Model Number	Overall		Inside Each Bowl			Cutout in Countertop (1 1/2" Radius Corners)		No. of 1 1/2" Dia. Faucet Holes 4" Center	Minimum Cabinet Size
	L	W	L	W	D	L	W		
	A	B	C	D	E	L	W		
LTR4622	46	22	13 1/2	16	7 5/8	45 3/8	21 3/8	3, 4, 6, 8	51
LTR542210	54	22	16	16	10 1/8	53 3/8	21 3/8	3, 4, 6, 8	57
LTR632210	63	22	19	16	10 1/8	62 3/8	21 3/8	3, 4, 6, 8	66

*Length is left to right. Width is front to back.



Model LTR6322106 Illustrated

HOLE DRILLING CONFIGURATIONS



ALL DIMENSIONS IN INCHES, TO CONVERT TO MILLIMETERS MULTIPLY BY 25.4.

In keeping with our policy of continuing product improvement, Elkay reserves the right to change product specifications without notice.

This specification describes an Elkay product with design, quality and functional benefits to the user. When making a comparison of other producers' offerings, be certain these features are not overlooked.

Elkay

elkayusa.com

2222 Camden Court
Oak Brook, IL 60523

Printed in U.S.A.
©2006 Elkay

(Rev. 8/06) 1-64D