

ELKAY[®]

SPECIFICATIONS

Design Inspirations '08 by Fu-Tung Cheng

Single Bowl Undermount Sink with Drainboard

Models DSGNR7220 and DSGNR7220C

GENERAL

Highest quality sink fabricated of #16 gauge (1.6mm), type 304 (18-8) nickel-bearing stainless steel. Marrying the aesthetic with the practical, Fu-Tung Cheng has created versatile, multi-function workspaces in signature sculptural shapes.

Model DSGNR7220C includes optional accessories LKWR1416SS, CBB2216 and LC1720SS.

DESIGN FEATURES

Bowl Depth: 9" (229mm).

Coved Corners: Zero radius.

Finish: Exposed surfaces have a polished satin finish.

Sides: Sink has embossed areas to support wire rack.

Underside: Fully protected by heavy duty Sound Guard[®] undercoating designed to prevent condensation and dampen sound.

OTHER

Drain Opening: 3-1/2" (89mm).

Sink complies with ASME A112.19.3.

Furnished with LKDC56 (2) and LKDC66 (1) drain covers.

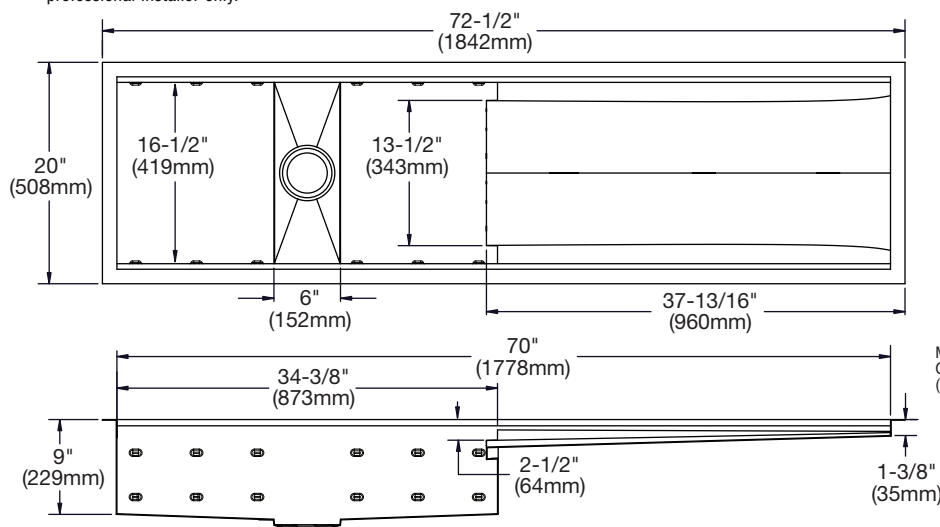
SINK DIMENSIONS*

Model Number	Overall		Inside Bowl			Work Area			Drain Opening	Cutout in Countertop	Minimum Cabinet Size
	L	W	L	W	D	L	W	D			
DSGNR7220	72 1/2 (1842mm)	20 (508mm)	34 3/8 (873mm)	16 1/2 (419mm)	9 (229mm)	36 5/8 (930mm)	17 1/2 (445mm)	13 3/8 to 2 1/2 (35mm) (64mm)	3 1/2 (89mm)	See Template**	†
DSGNR7220C	72 1/2 (1842mm)	20 (508mm)	34 3/8 (873mm)	16 1/2 (419mm)	9 (229mm)	36 5/8 (930mm)	17 1/2 (445mm)	13 3/8 to 2 1/2 (35mm) (64mm)	3 1/2 (89mm)	See Template**	†

*Length is left to right. Width is front to back.

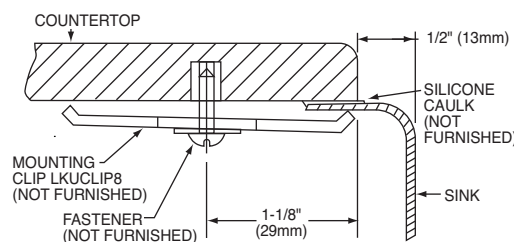
**Template is packed with every sink.

†Due to the size and installation method, a custom cabinet is required. Recommend that installation be accomplished by an experienced and professional installer only.



Installation Profile

The template provided with each DSGNR sink provides the only type of installation recommended by ElKay.



OPTIONAL ACCESSORIES*

Model Number	Description	Overall			Material
		L	W	Depth/Thickness	
LKWR1416SS	Wire Rack	14 1/8 (359mm)	16 1/4 (413mm)	7/8 (23mm)	Stainless Steel
CBB2216	Cutting Board	18 1/4 (464mm)	22 (559mm)	1 3/4 (44mm)	Hardwood
LC1720SS	Colander	17 1/4 (438mm)	20 1/2 (521mm)	1/2 (13mm)	Stainless Steel
LKUCLIP8	Mounting Clip	4 Packages Required			Stainless Steel
LK99	Drain	Fits 3 1/2" (89mm) Opening			Stainless Steel

*Length is left to right. Width is front to back.

In keeping with our policy of continuing product improvement, ElKay reserves the right to change product specifications without notice. Please visit elkayusa.com for most current version of ElKay product specification sheets.

This specification describes an ElKay product with design, quality and functional benefits to the user. When making a comparison of other producers' offerings, be certain these features are not overlooked.

