

**Surgeon's Lavatory With Instrument Trays
Wall Mounted With Sensor Faucet
Battery Powered, Models ESLV2820SBC,
ESLV2820SBMC and ESLV2820SBTMC**

ELKAY®

SPECIFICATIONS

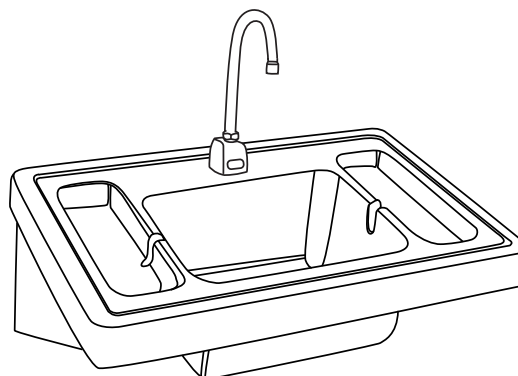
GENERAL

ESLV2820 #16 gauge, type 304 (18-8) stainless steel surgeon's lavatory with integral instrument trays. Lavatory compartment has 1-3/4" (44mm) radius vertical and horizontal covered corners. Exposed surfaces are hand blended to a uniform satin luster finish. Underside is sound deadened. Furnished with stainless steel support brackets.

(CHECK MODEL SPECIFIED)

MODEL	FAUCET	DRAIN	MIXING VALVE
<input type="checkbox"/> ESLV2820SBC	LK721B	LK9	NONE
<input type="checkbox"/> ESLV2820SBMC	LK721B	LK9	LK724
<input type="checkbox"/> ESLV2820SBTMC	LK721B	LK9	LK723

LK721B Sensor-operated, non-mixing (tempered water), deck-mounted gooseneck faucet with adjustable sensor eyes. A continuous beam is emitted from sensor. The sensor faucet is activated by user placing hands under the spout. Tempered water will flow as long as hands remain within sensor range. When hands are removed, the water stops automatically based on shut off delay settings. The sensor then resets and is ready for the next user. Battery powered and has a battery holder with (4) AA batteries. Chrome plated - solid brass body construction and 12-1/2" (318mm) high from deck to top of spout, 8-1/4" (210mm) from deck to spout outlet, 5-3/8" (137mm) reach C.P. spout with 2.0 gpm laminar flow control on spout end. Includes vandal-resistant, water-resistant sensor control module with armored vandal-resistant control and power cables, slow-closing piston operated solenoid valve, in-line filter with clean out trap, and 3/8" (10mm) stainless steel braided 12" (305mm) supply line. Control circuit is solid state, has adjustable sensor range (6" [152mm] preset to 30" [762mm]), shut off delay



Model ESLV2820SBC

preset at 1 second and field adjustable to 2, 4, or 8 seconds, and automatic time-out feature (to prevent sink overflow) is preset at 0 seconds and is field adjustable to 15, 30, or 60 seconds.

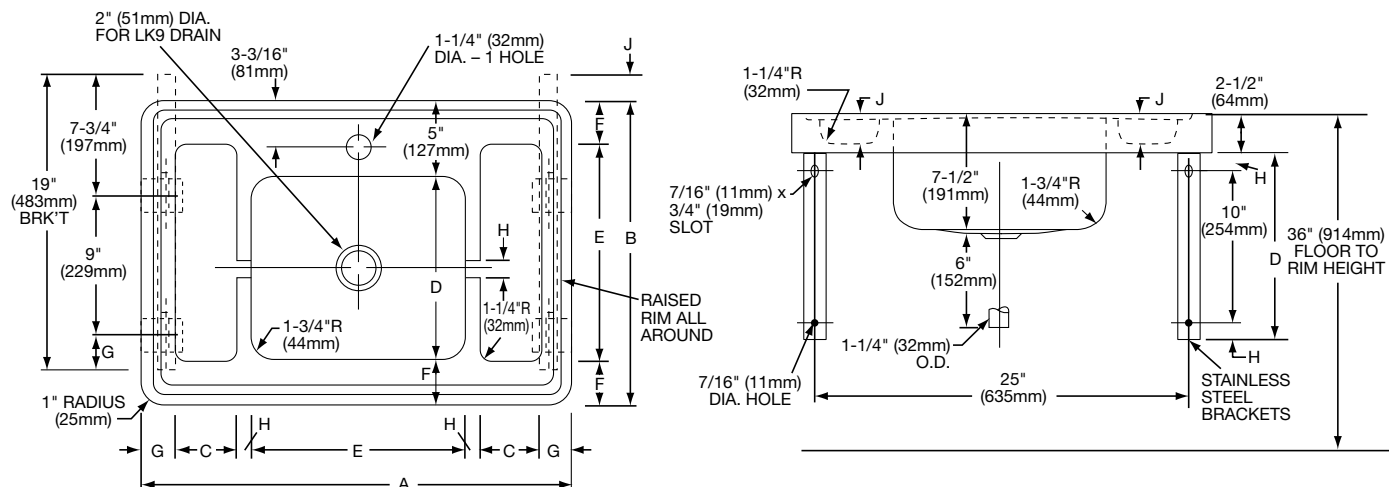
LK9 Chrome plated grid strainer with 1-1/4" (32mm) O.D. tailpiece.

LK723 Anti-scald thermostatic mixing valve with nickel-plated brass body 1/2" (13mm) SWT inlets and outlet connections, check valves on inlets and a mixed temperature range of 80°-120°F. Certified under ASSE1016.

LK724 Mechanical mixing valve with C.P. brass body, 3/8" (10mm) compression inlets and outlet connections, and check valves on inlets.

DIMENSIONS

Model Number	A		B		C		D		E		F		G		H		I		J	
	in.	mm	in.	mm	in.	mm	in.	mm	in.	mm	in.	mm	in.	mm	in.	mm	in.	mm	in.	mm
ESLV282	28	711	20	508	3/4	95	12	305	14	356	3	76	2 1/4	57	1	25	6	152	1 1/2	38

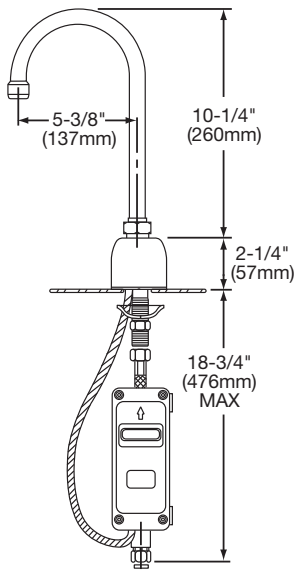
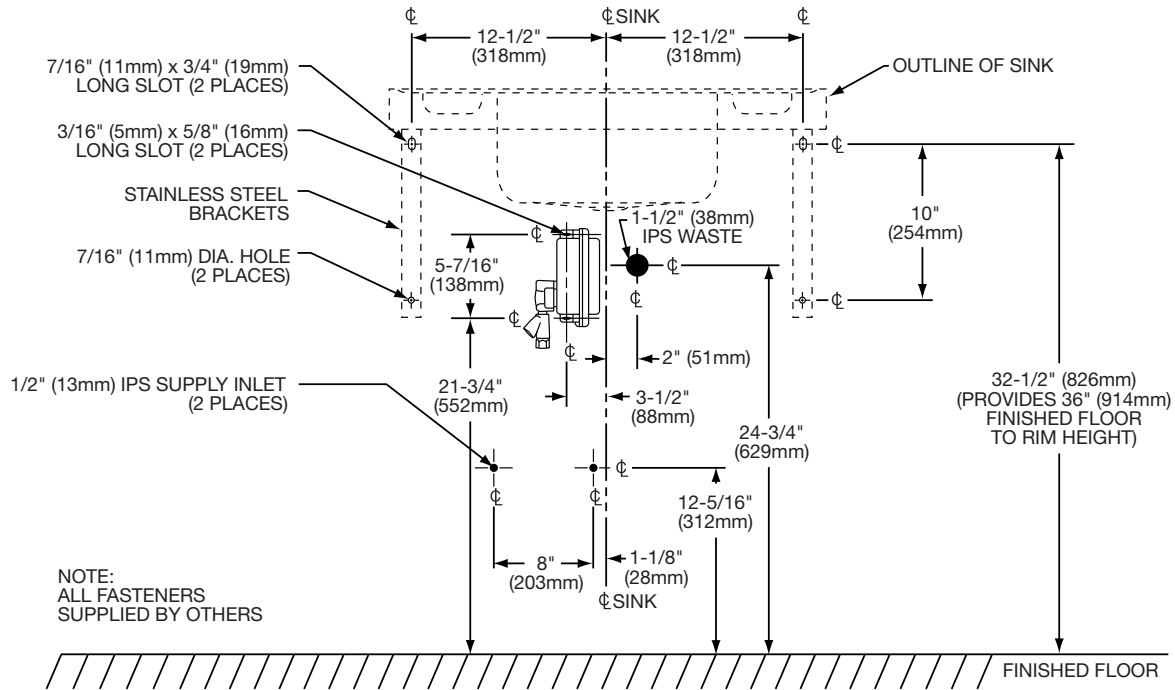


In keeping with our policy of continuing product improvement, Elkay reserves the right to change product specifications without notice.

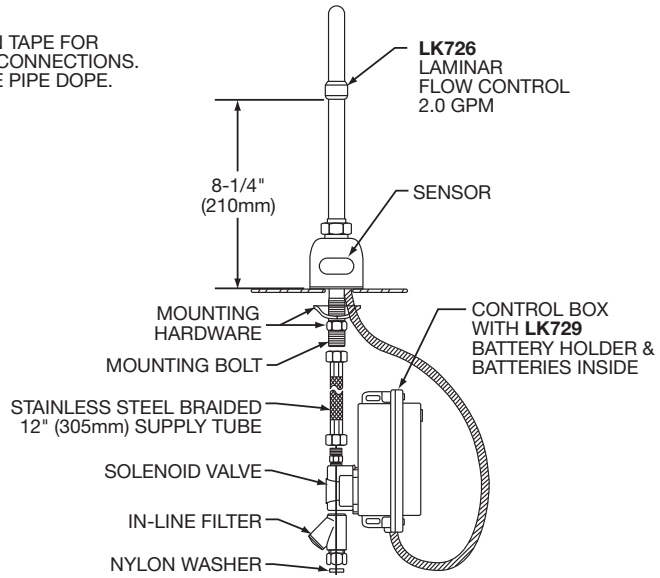
**Surgeon's Lavatory With Instrument Trays
Wall Mounted With Sensor Faucet
Battery Powered, Models ESLV2820SBC,
ESLV2820SBMC and ESLV2820SBTMC**

ELKAY®

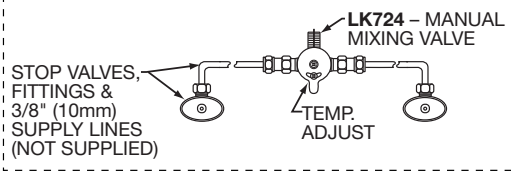
ROUGH-IN DIMENSIONS



NOTE:
USE TEFLON TAPE FOR
ALL WATER CONNECTIONS.
DO NOT USE PIPE DOPE.



FOR ESLV2820SBMC



FOR ESLV2820SBTMC

