

**Lavatory Sink, Wall Mounted
With Sensor Faucet, Battery Powered
Models ELV2219SBC, ELV2219SBMC
and ELV2219SBTMC**



SPECIFICATIONS

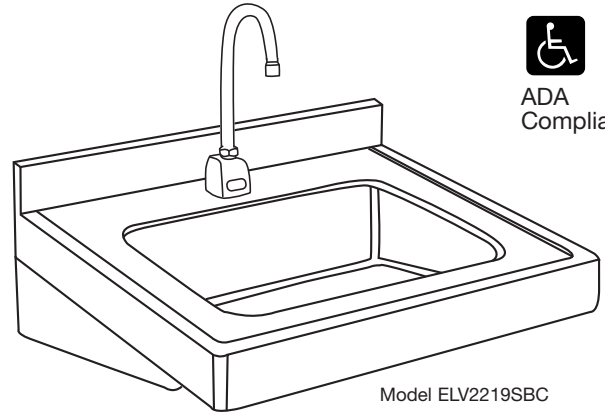
GENERAL

ELV2219 #18 gauge, type 304 (18-8) stainless steel lavatory with 5/32" (4mm) raised rim and 2-1/2" (64mm) high back-splash. Compartment has 1-3/4" (44mm) radius vertical and horizontal coved corners. 2-1/2" (64mm) apron at front and both sides. Exposed surfaces are hand blended to a uniform satin luster finish. Rear centered outlet. Drain opening 1-5/8" (41mm). Underside is sound deadened. Furnished with integral stainless steel support brackets and separate wall hanger. Meets ADA requirements.

(CHECK MODEL SPECIFIED)

| MODEL | FAUCET | MIXING VALVE |
|---------------------------------------|--------|--------------|
| <input type="checkbox"/> ELV2219SBC | LK721B | NONE |
| <input type="checkbox"/> ELV2219SBMC | LK721B | LK724 |
| <input type="checkbox"/> ELV2219SBTMC | LK721B | LK723 |

LK721B Sensor-operated, non-mixing (tempered water), deck-mounted gooseneck faucet with adjustable sensor eyes. A continuous beam is emitted from sensor. The sensor faucet is activated by user placing hands under the spout. Tempered water will flow as long as hands remain within sensor range. When hands are removed, the water stops automatically based on shut off delay settings. The sensor then resets and is ready for the next user. Battery powered and has a battery holder with (4) AA batteries. Chrome plated - solid brass body construction and 12-1/2" (318mm) high from deck to top of spout, 8-1/4" (210mm) from deck to spout outlet, 5 3/8" (137mm) reach C.P. spout with 2.0 gpm laminar flow control on spout end. Includes vandal-resistant, water-resistant sensor control module with armored vandal-resistant control and power cables, slow-closing piston operated solenoid valve, in-line filter with clean




ADA Compliant

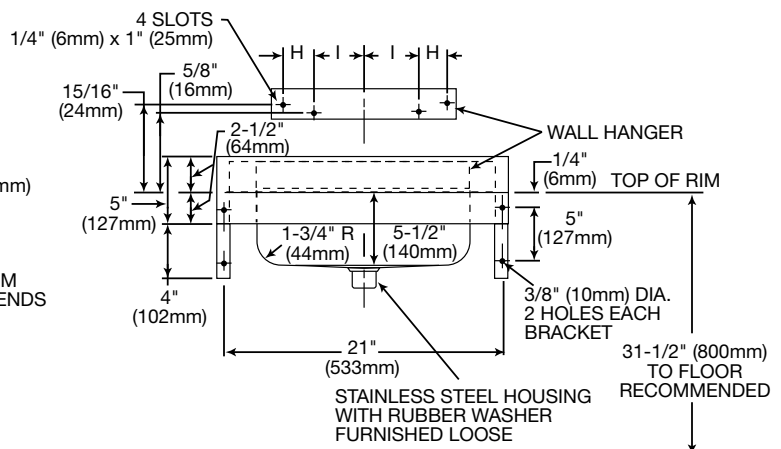
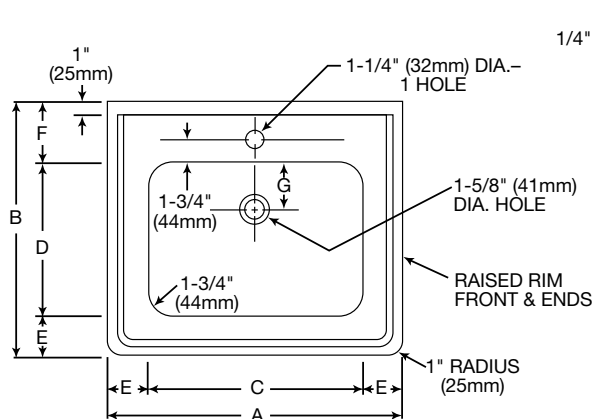
out trap, and 3/8" (10mm) stainless steel braided 12" (305mm) supply line. Control circuit is solid state, has adjustable sensor range (6" [152mm] preset to 30" [762mm]), shut off delay preset at 1 second and field adjustable to 2, 4 or 8 seconds, and automatic time-out feature (to prevent sink overflow) is preset at 0 seconds and is field adjustable to 15, 30 or 60 seconds.

LK723 Anti-scald thermostatic mixing valve with nickel-plated brass body 1/2" (13mm) SWT inlets and outlet connections, check valves on inlets and a mixed temperature range of 80°-120°F. Certified under ASSE1016.

LK724 Mechanical mixing valve with C.P. brass body, 3/8" (10mm) compression inlets and outlet connections, and check valves on inlets.

DIMENSIONS

| Model Number | A | | B | | C | | D | | E | | F | | G | | H | | I | |
|----------------|-----|-----|-----|-----|-----|-----|--------|-----|-----|----|-------|-----|-------|----|-------|----|---------|-----|
| | in. | mm | in. | mm | in. | mm | in. | mm | in. | mm | in. | mm | in. | mm | in. | mm | in. | mm |
| ELV2219 | 22 | 559 | 19 | 483 | 16 | 406 | 11 1/2 | 292 | 3 | 76 | 4 1/2 | 114 | 3 1/2 | 89 | 2 5/8 | 67 | 4 15/16 | 125 |

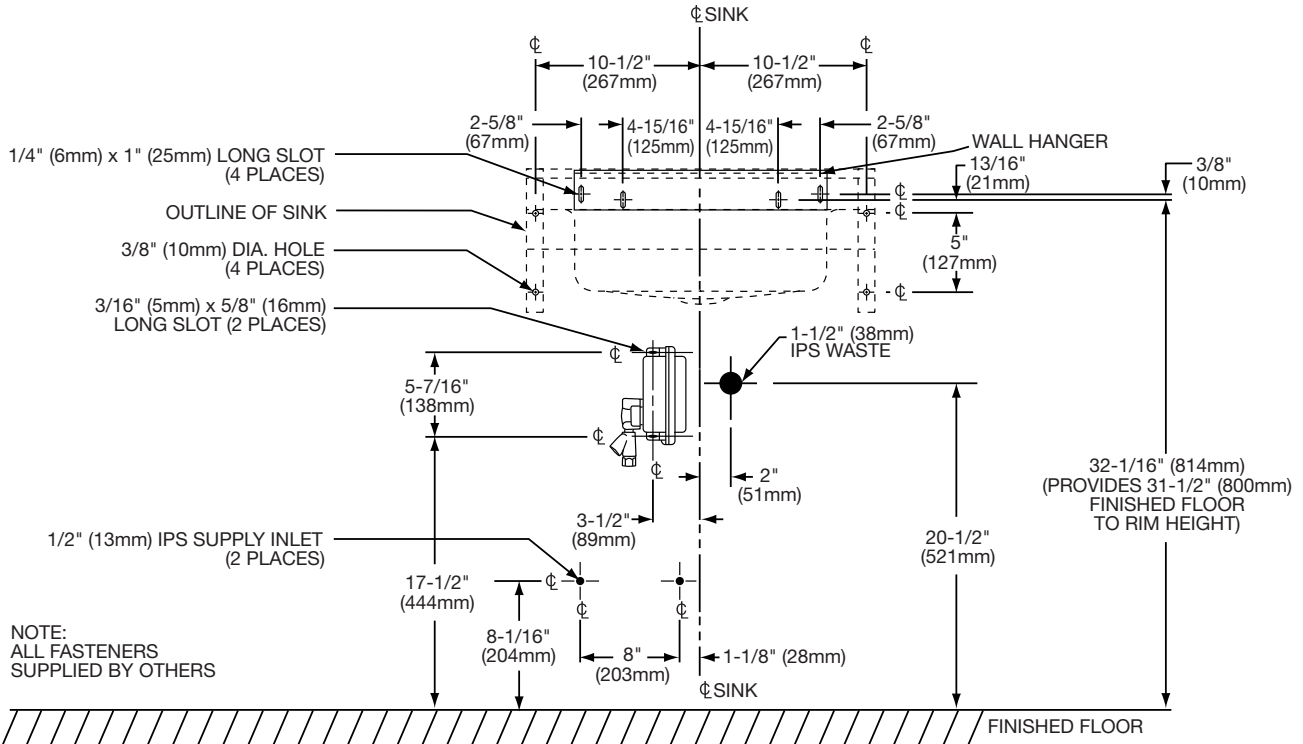


In keeping with our policy of continuing product improvement, Elkay reserves the right to change product specifications without notice.

**Lavatory Sink, Wall Mounted
With Sensor Faucet, Battery Powered
Models ELV2219SBC, ELV2219SBMC
and ELV2219SBTMC**

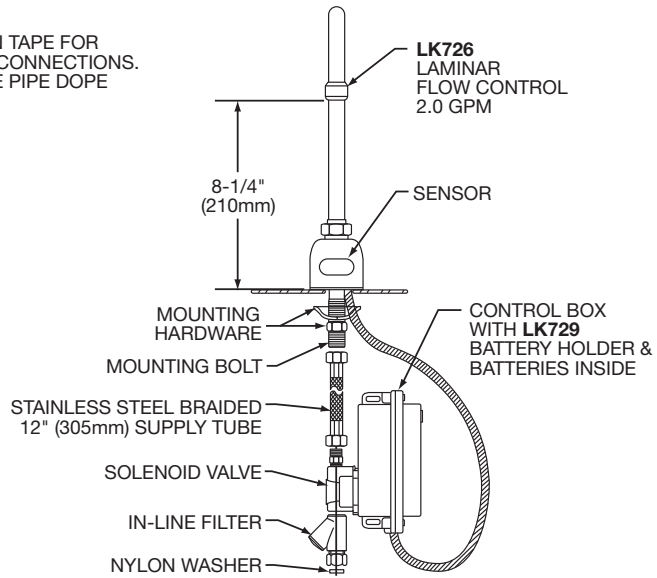
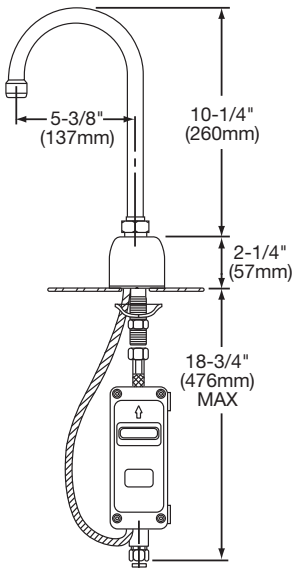


ROUGH-IN DIMENSIONS

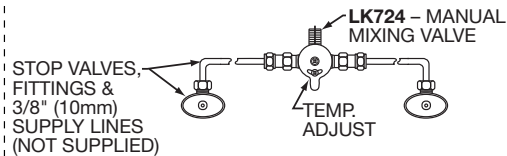


NOTE:
ALL FASTENERS
SUPPLIED BY OTHERS

NOTE:
USE TEFLON TAPE FOR
ALL WATER CONNECTIONS.
DO NOT USE PIPE DOPE



FOR ELV2219SBMC



FOR ELV2219SBTMC

