

ELKAY® SPECIFICATIONS

Four Station Wall Mounted Wash Sink Models EWMA9620C and EWMA9620

GENERAL

#14 gauge, type 304 (18-8), stainless steel multiple station wash sink. 1-1/2" (38mm) wide inward sloping top channel rims, with 2" (51mm) flat apron. Full length 10" (254mm) high backsplash. Exposed surfaces are hand blended to a uniform lustrous satin finish. Furnished with wall hangers and stainless steel support brackets.

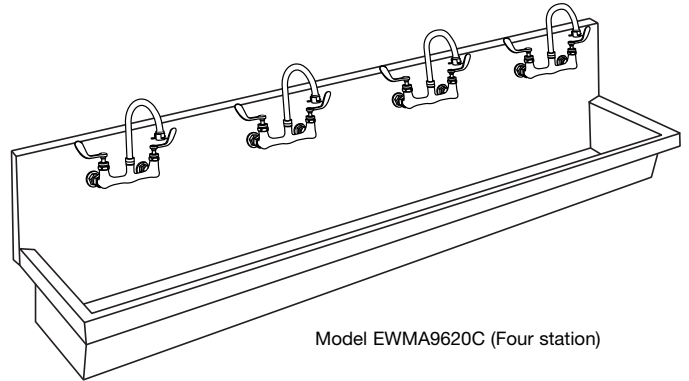
(CHECK MODEL SPECIFIED)

☐ EWMA9620C

FURNISHED COMPLETE WITH:

SUPPLY: **LK940GNO8T4H.** (Four) chrome plated mixing faucet with BH6A 4" (102mm) wrist blade handles, swing 8" (203mm) high gooseneck spout, vandal-resistant, anti-hose aerator.

DRAIN: **LK18B.** Stainless steel perforated strainer grid. 1-1/2" (38mm) O.D. x 4" (102mm) stainless steel tailpiece.



Model EWMA9620C (Four station)

FOLLOWING MODEL DOES NOT INCLUDE SUPPLY AND DRAIN:

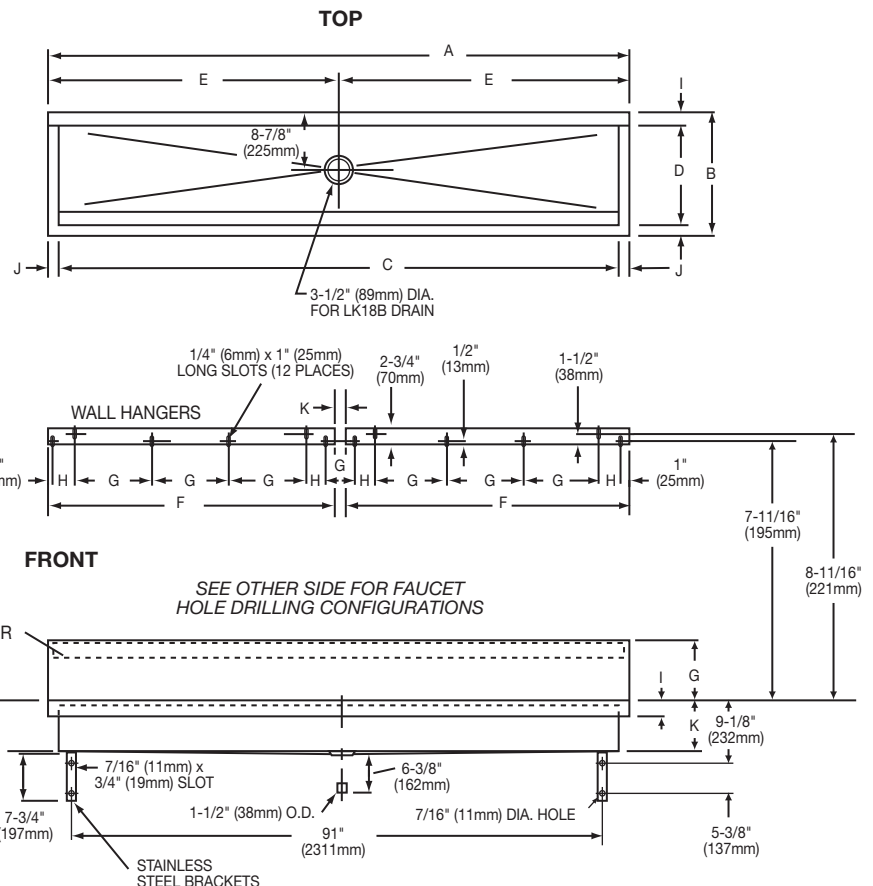
☐ EWMA9620

SPECIFY FAUCET DRILLINGS AND LOCATION.

(See other side for standard faucet hole drilling configurations.)

DIMENSIONS

| Model Number EWMA9620 | | | | | |
|-----------------------|--------|------|-------|-------|-----|
| DIMS. | in. | mm | DIMS. | in. | mm |
| A | 96 | 2438 | G | 10 | 254 |
| B | 20 | 508 | H | 4 | 102 |
| C | 93 | 2362 | I | 2 | 51 |
| D | 16 1/2 | 419 | J | 1 1/2 | 38 |
| E | 48 | 1219 | K | 8 | 203 |
| F | 40 | 1016 | | | |



In keeping with our policy of continuing product improvement, Elkay reserves the right to change product specifications without notice.

Elkay

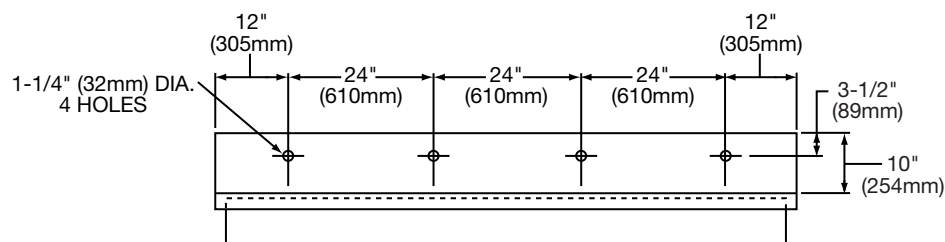
elkayusa.com

2222 Camden Court
Oak Brook, IL 60523

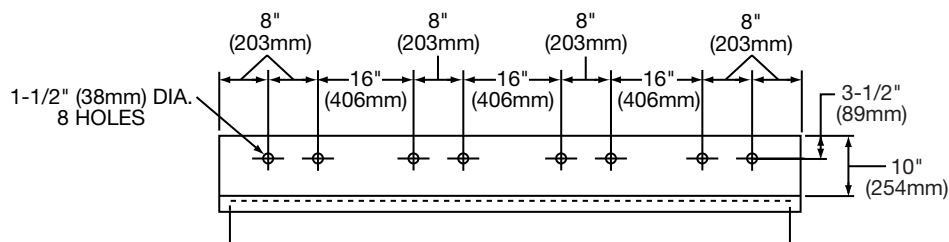
Printed in U.S.A.
©2009 Elkay

(3/09) 3-171

HOLE DRILLING CONFIGURATIONS



EWMA96204



EWMA96208