

# ELKAY® SPECIFICATIONS

## Hand Wash-Up Sink with Side Splashes, Sensor Faucet and Pedestal – AC or Battery Powered Models CHSP1716LRSSAC and CHSP1716LRSSB Series

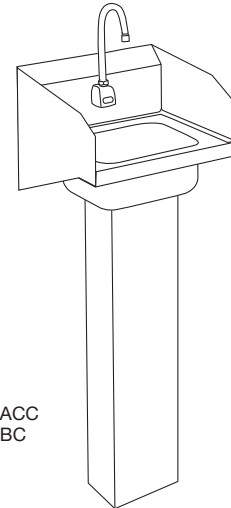
### GENERAL

**CHSP1716LRS** Type 304 (18-8) stainless steel hand wash-up sink with 7" (178mm) high right and left side splashes. Basin has 1-3/4" (45mm) radius coved corners. Full length 7" (178mm) high backsplash. Exposed surfaces have a brushed finish. Furnished with stainless steel pedestal and wall hanger. Carries NSF International Certification.

(CHECK MODEL SPECIFIED)

| MODEL               | FAUCET  | DRAIN | TRAP  | MIXING VALVE |
|---------------------|---------|-------|-------|--------------|
| □ CHSP1716LRSSACC   | LK722AC | LK8   | LK500 | NONE         |
| □ CHSP1716LRSSACMC  | LK722AC | LK8   | LK500 | LK724        |
| □ CHSP1716LRSSACTMC | LK722AC | LK8   | LK500 | LK723        |
| □ CHSP1716LRSSBC    | LK722B  | LK8   | LK500 | NONE         |
| □ CHSP1716LRSSBMC   | LK722B  | LK8   | LK500 | LK724        |
| □ CHSP1716LRSSBTMC  | LK722B  | LK8   | LK500 | LK723        |

**LK722AC** Sensor-operated, non-mixing (tempered water), backsplash-mounted gooseneck faucet with adjustable sensor eyes. A continuous beam is emitted from sensor. The sensor faucet is activated by user placing hands under the spout. Tempered water will flow as long as hands remain within sensor range. When hands are removed, the water stops automatically based on shut off delay settings. The sensor then resets and is ready for the next user. AC powered, chrome plated - solid brass body construction and 12-3/4" (324mm) high (bottom of base to top of spout) 8-3/4" (222mm) from aerator to base, 5-3/8" (137mm) reach C.P. spout with 2.0 gpm laminar flow control on spout end. Includes vandal-resistant, water-resistant sensor control module with armored vandal-resistant control and power cables. 12V DC plug-in voltage adapter, slow-closing piston operated solenoid valve, in-line filter with clean out trap, and 3/8" (10mm) copper fittings for supply tube



Model CHSP1716LRSSACC  
Model CHSP1716LRSSBC  
(Pedestal Mount)

furnished by contractor. Control circuit is solid state, has adjustable sensor range (6" [152mm] preset to 30" [762mm]), shut off delay preset at 1 second and field adjustable to 2, 4 or 8 seconds, and automatic time-out feature (to prevent sink overflow) is preset at 0 seconds and is field adjustable to 15, 30 or 60 seconds.

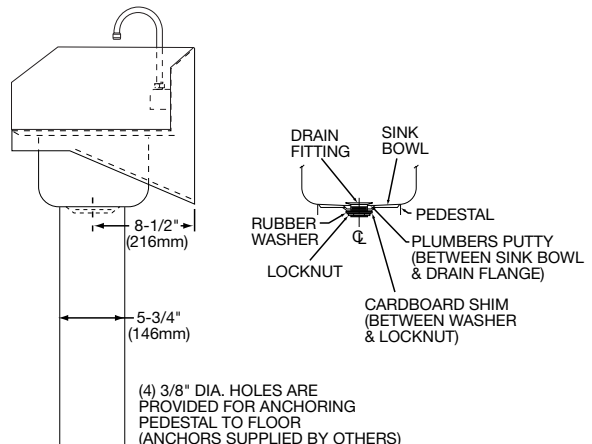
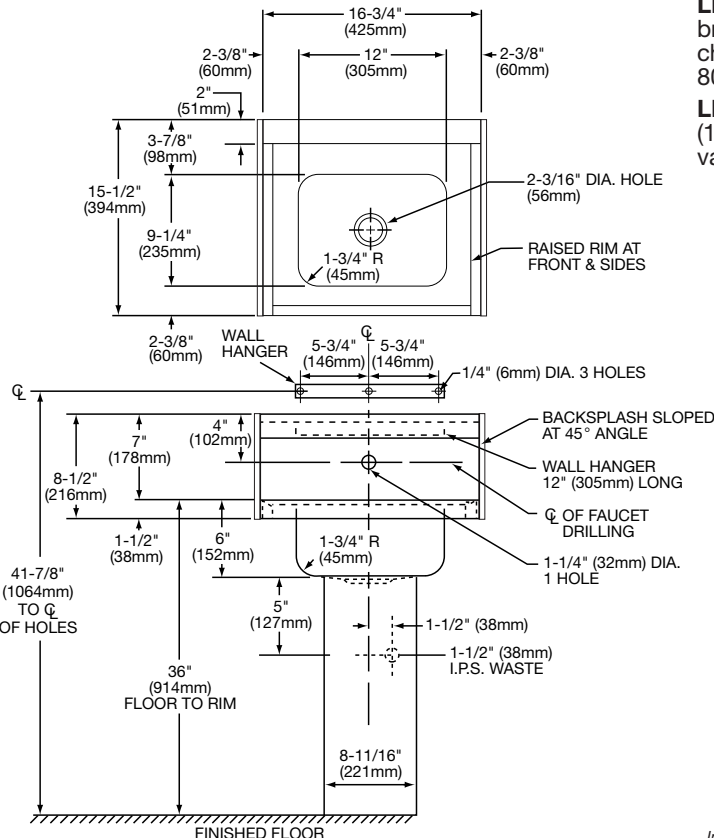
**LK722B** Same as LK722AC except battery powered and has a battery holder with (4) AA batteries.

**LK8** Chrome plated grid strainer with 1-1/2" (38mm) O.D. tailpiece.

**LK500** Satin chrome cast brass "P" trap with cleanout, chrome plated 1-1/2" (38mm) O.D. tubing waste arm to wall, and wall flange.

**LK723** Anti-scald thermostatic mixing valve with nickel-plated brass body 1/2" (13mm) SWT inlets and outlet connections, check valves on inlets and a mixed temperature range of 80°- 120°F. Certified under ASSE1016.

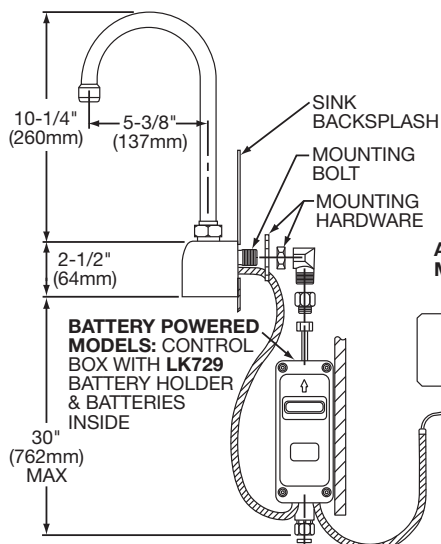
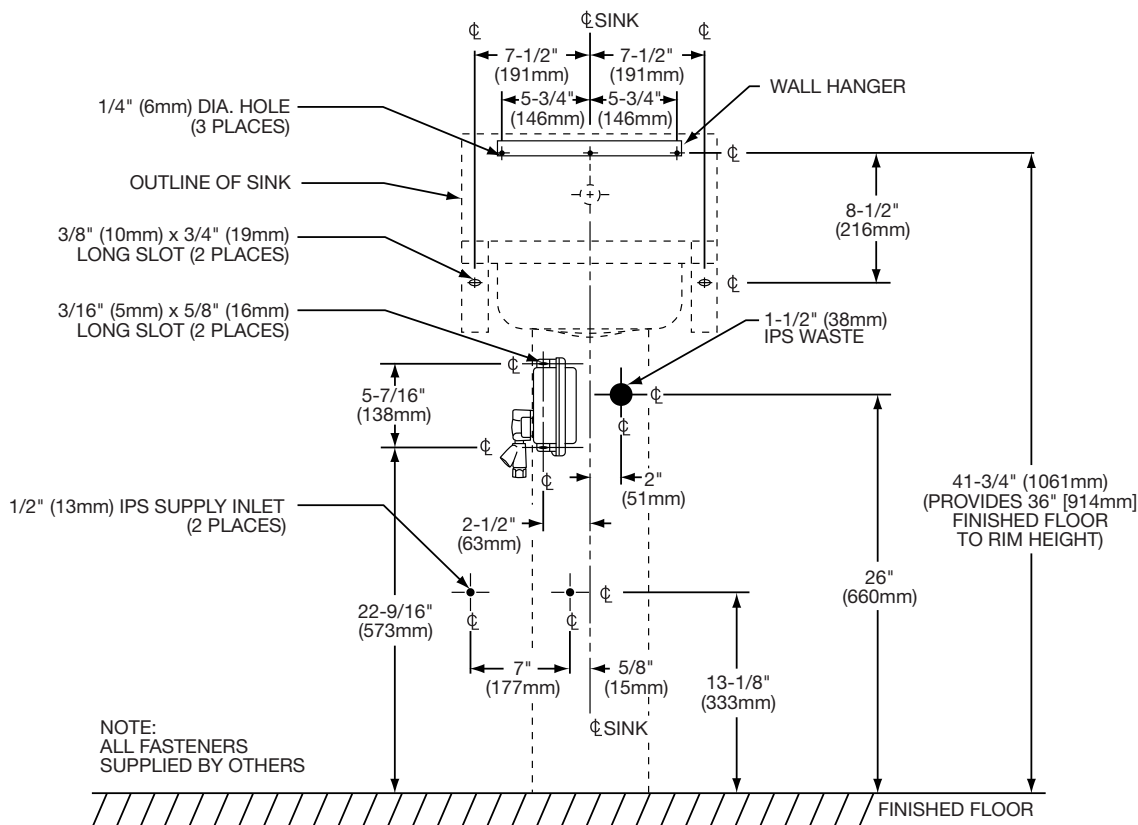
**LK724** Mechanical mixing valve with C.P. brass body, 3/8" (10mm) compression inlets and outlet connections, and check valves on inlets.



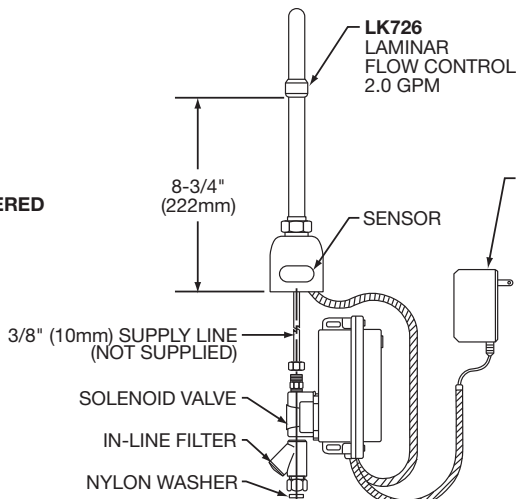
In keeping with our policy of continuing product improvement, Elkay reserves the right to change product specifications without notice.

**Hand Wash-Up Sink with Side Splashes,  
Sensor Faucet and Pedestal – AC or Battery Powered  
Models CHSP1716LRSSAC and  
CHSP1716LRSSB Series**

**ELKAY®  
ROUGH-IN DIMENSIONS**

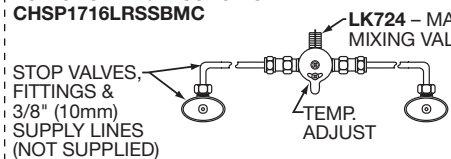


**AC POWERED MODELS**



**LK728**  
12V PLUG-IN DC ADAPTER  
W/20" (508mm) SHIELDED LINE  
OUTLET LOCATION BY OTHERS  
(POWER SUPPLY MUST BE  
INSTALLED PER LOCAL CODES)

**FOR CHSP1716LRSSACMC AND  
CHSP1716LRSSBMC**



**FOR CHSP1716LRSSACTMC AND CHSP1716LRSSBTMC**

