

## INFORMATION ABOUT YOUR MOBILE CABLES SYSTEM® PURCHASE

Thank you for your purchase of Mobile Cables System®, the original cable and rod display system. Our components are always manufactured from solid brass to ensure the highest quality and longest service life. Please read the enclosed specification and installation guidelines and refer to your MCS catalog or call your salesperson should you have any additional questions.

### **Before you start:**

It is the responsibility of the purchaser and/or installer to:

- 1) Verify the mounting surface is solid and capable of supporting the total loads of the installed system;
- 2) Determine the appropriate size and type of anchor for the application;
- 3) Ensure that the appropriate Cable and/or Rod system is being used for the intended purpose.

Weight limitations are included only as general guidelines and are not applicable to all installations.

Specific assembly and mounting instructions for the type of components you have purchased are included. Please read and follow them.

If you have any questions, please consult your MCS catalog or contact Carl Stahl DécorCable salesperson.

### **Cable and Rod Display Systems:**

The weight limits of systems are calculated with the understanding that all ceiling, floor, and/or wall connections are anchored appropriately into substantial blocking. The systems are sent assembled and are field adjustable to the optimal length by cutting the cable/rod and tightening the bottom anchor. Use appropriate anchors or MCS aluminum channel to attach anchors to the mounting surface.

### **Wall to Wall and Wall to Floor Systems:**

The weight limitations of wall-mounted systems are less than ceiling cable and rod mounted systems. It is imperative that a solid wall surface and sufficient blocking must be present to withstand the cantilever effect of the loads. The systems are sent assembled and are field adjustable to the optimal length by cutting the cable and tightening the turnbuckle body.

### **Connectors:**

Individual load limitations for cable and rod connectors are much less than the rated loads of the cable/rod system and should be verified before installation. Refer to your catalog or contact your salesperson for recommended loads. Many of the connectors and supports are multi-positional and may be rotated to support horizontal and vertical panels. When supporting glass, use due care not to over-tighten setscrews. **WE HIGHLY RECOMMEND TEMPERED GLASS IN ALL APPLICATIONS.** Avoid the use of laminated glass with setscrew type connectors and supports.

### **Anchoring Recommendations:**

Directly into mounting surface:

- wood ceilings and floors: standard wood screws.
- concrete ceilings and floors: expanding screw plugs.
- drywall and suspended ceilings: attach directly to studs or blocking using appropriate hardware.

Using Aluminum Channels:

MCS aluminum channels can be used to add anchoring points for MCS cables and rods. Channels must be affixed every 12" maximum with appropriate anchors as recommended above. The cables and rods are attached to the channels using CTR BIS wing nut assembly.

### **Maintenance Instructions:**

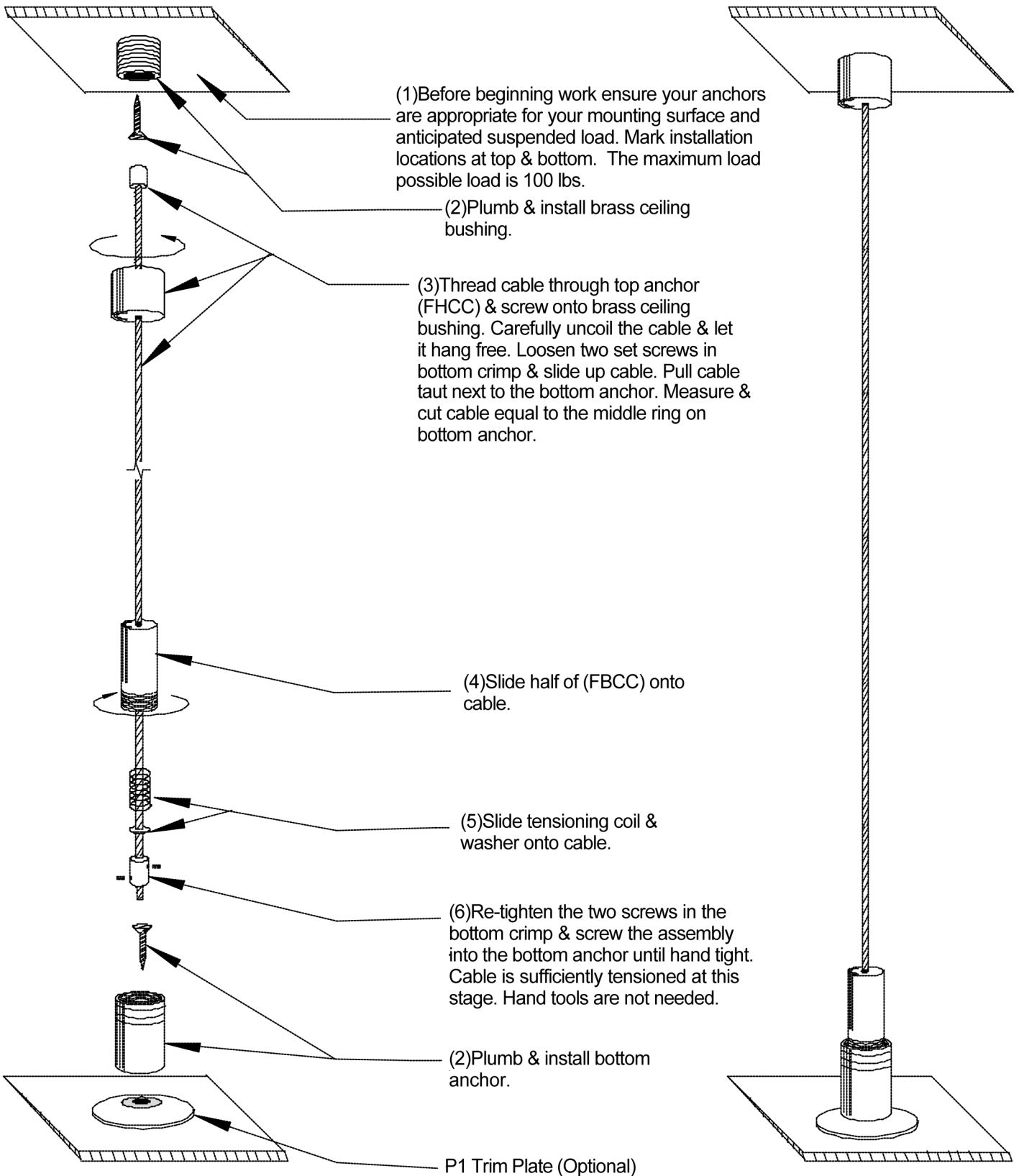
To ensure that your equipment retains its highly aesthetic look over time, we recommend that you regularly remove dust. Periodically inspect the cables and/or rods and check that all components remain tightened.

### **Limited Product Warranty:**

CARL STAHL-DECORCABLE INNOVATIONS, LLC ("CSDCI") warrants that all Mobile Cables System® cable & rod products shall be free from defects in materials and workmanship under normal use, installation and maintenance in accordance to product specifications. If any failure to conform to this warranty is reported to CSDCI within one year from the date of purchase by the original buyer, CSDCI, upon being satisfied of the existence of such non-conformity, will correct same at its discretion by repairing or replacing the product. This warranty does not cover damage resulting from mishandling in transit, vandalism, misuse, abuse, neglect, alteration, natural disasters, or failure to exercise reasonable care in installing or maintaining the product. This warranty applies only to the original buyers who purchased the product directly from CSDCI. Glass and acrylic displays are covered by the same warranty as stated above for a period of 30 days from date of purchase by original purchaser. This warranty is in lieu of and excludes all other warranties, expressed or implied, arising by operation of law or otherwise, including any warranty of merchantability or fitness for particular purpose or otherwise, and no representation of warranty, expressed or implied, made by any sales representative or other agent of CSDCI. In no event will CSDCI be liable for incidental or consequential damages. This warranty gives you specific legal rights, and you may have other rights which vary from state to state. To obtain service under this warranty, call (800) 444-6271.

Carl Stahl-DecorCable Innovations LLC  
660 W. Randolph St.  
Chicago, IL 60661  
T: 312-474-1100  
E: [sales@decorable.com](mailto:sales@decorable.com)  
W: [www.decorable.com](http://www.decorable.com)





Carl Stahl-DecorCable Innovations LLC  
 660 W. Randolph St  
 Chicago, IL 60661  
 T: 312-474-1100  
 E: sales@decorable.com  
 W: www.decorable.com

© 2007 Carl Stahl-DecorCable Innovations LLC