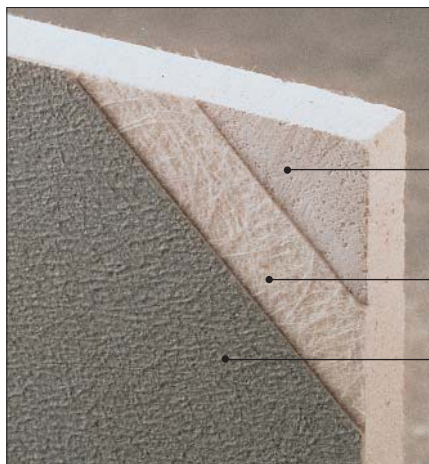


PRODUCT Bulletin

Important Information from Georgia-Pacific Gypsum

The only Premium Tile Backer Board for use in wet and dry areas with a 5/8" Type X Fire Rating.

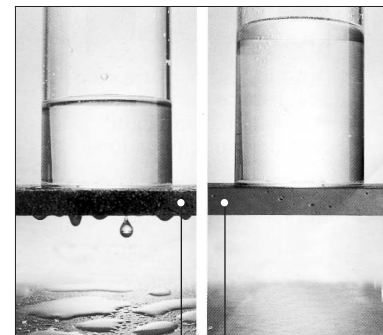


Superior Moisture and Mold Resistance

Specially treated, water-resistant core for added protection

Embedded fiberglass mat adds strength

Heat cured acrylic coating for superior water and vapor retarding qualities



Portland Cement Board

Allows moisture to pass through the wall cavity.

DensShield[®] Tile Backer

Stops moisture at the surface to protect wall cavity.

- 5/8" DensShield[®] Fireguard[®] Type X Tile Backer is a UL classified substrate listed as Type DS in many UL Design numbers and can replace a 5/8" Type X gypsum board in any generic fire-rated assembly.
- Maintains 1- and 2-hour fire rating with or without tile; see non-tile applications in literature.
- Integral moisture barrier, stops water at the surface—protects wall components.
- Proven performance since 1987 with millions of installed feet.
- Manufactured and warranted by Georgia-Pacific Gypsum LLC.
- Per NAHB study, DensShield Tile Backer can save 46% in labor costs over cement board.
 - No need for expensive mineral fiber insulation.
 - No need for additional moisture barrier.

- Excellent substrate for non-tile applications in wet and non-wet areas.
- Water-resistant core —resists moisture and wicking.
- Fiberglass mats on front and back surfaces provide strength moisture and mold resistance.
- 5/8" DensShield Fireguard Type X aligns with other 5/8" thick gypsum boards—no shims required.
- 20-Year Limited Warranty when used in commercial tile construction.
- Lifetime Limited Warranty when used in residential tile applications.
- Resists growth of mold, when tested as manufactured, per ASTM D 3273.
- Listed as microbial resistant with GREENGUARD Environmental Institute.

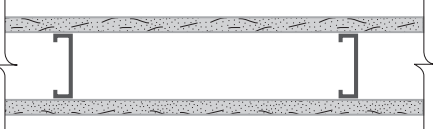
NER-572	Wisconsin DIHL 970019-S
BOCA # 90-30	New York City MEA 65-88-M
ICBO # 4465	Meets IRC and IBC code
SBCCI PST & ESI #9567C	

(Continued)

DensShield® Tile Backer requires only 1/2" product to qualify.

One-Hour Steel Frame

1-Hour Fire Rating
Test Reference: UL U465, ULC W415



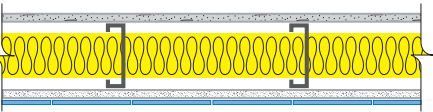
49 STC Sound Trans. Test Reference: RAL-TL00-125
Partition Thickness: 4-5/8" Weight per Sq. Ft.: 6.0

5/8" DensShield® Fireguard® Type X Tile Backer applied parallel or at right angles to each side of 3-5/8" metal studs 24" o.c. with 1-1/4" Type S drywall screws 8" o.c. to vertical studs and 12" o.c. to perimeter track. Stagger joints each side. Sound tested with 2-1/2" fiberglass batt insulation, friction fit.

Cement boards require 5/8" gypsum board to qualify.

Gypsum Wallboard, Steel Studs, Mineral Fiber Insulation, Cementitious Backer Unit

1-Hour Fire Rating
Test Reference: UL R12262, 96NK4276, 5-1-96,
Design U404



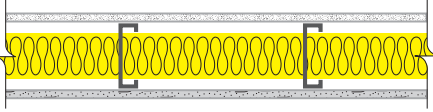
Partition Thickness: 4-5/8" Weight per Sq. Ft.: 7.0

One layer 5/8" proprietary Type X gypsum wallboard or gypsum veneer base applied parallel to ONE SIDE of 3-1/2" 20 gauge steel studs with 16" o.c. with 1" Type S drywall screws 8" o.c. at vertical joints and 12" o.c. at intermediate studs. 3" mineral fiber insulation batts, 2 pcf, in stud space.

Opposite Side: One layer 1/2" proprietary cementitious backer unit applied parallel or at right angles to studs with 1-1/4" Type S-12 wafer head screws 8" o.c. Vertical joints staggered and covered with glass fiber mesh tape. Ceramic tile (optional), 1/4" thick, joints grouted, installed with latex-modified portland cement mortar or ANSI A136.1 Type I organic adhesive. (NLB)

Gypsum Wallboard, Steel Studs, Mineral Fiber Insulation, Fiber-Cement Board

1-Hour Fire Rating
Test Reference: OPL 11710-92783, 2-13-92



40-44 STC Sound Trans. Test Reference: NGC 2385, 7-28-70

Partition Thickness: 4-3/4" Weight per Sq. Ft.: 7.5

One layer 5/8" proprietary Type X gypsum wallboard applied parallel to ONE SIDE of 3-5/8" steel studs 16" o.c. with 1" Type S drywall screws 8" o.c. at vertical joints and 12" o.c. at intermediate studs. 3-1/2" mineral fiber insulation 3.0 pcf, friction fit in stud space.

Opposite Side: One layer 7/16" proprietary fiber-cement board applied parallel to studs with 1" No. 8-18 x 0.323" head diameter ribbed bugle head screws 6" o.c. (NLB)

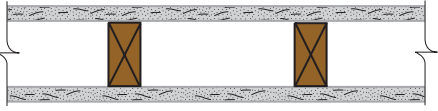


Insulation optional for DensShield® Tile Backer.

One-Hour Wood Frame

1-Hour Fire Rating

Test Reference: WHI 495-0853, UL U305



30-34 STC Sound Trans. Test Reference: OR 64-8

Partition Thickness: 4-3/4" Weight per Sq. Ft.: 7.0

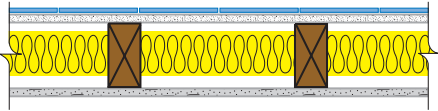
5/8" DensShield® Fireguard® Type X Tile Backer applied parallel or at right angles to 2x4 wood studs 16" o.c. with 1-7/8" phosphate coated nails 8" o.c. Joints staggered each side and covered with 2" wide 10x10 glass mesh tape and tile adhesive. (Load-bearing)

Cement backers require mineral wool insulation.

Gypsum Wallboard, Mineral Fiber Insulation, Cementitious Backer Unit, Ceramic Tile, Wood Studs

1-Hour Fire Rating

Test Reference: UL R11270, 4-19-85



40-44 FSTC Sound Trans. Test Reference: USG 840314, 3-12-84; USG 840404, 4-4-84

Partition Thickness: 5-1/8" Weight per Sq. Ft.: 13.0

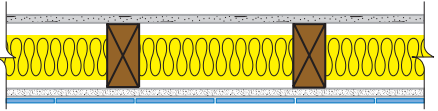
One layer 1/2" thick proprietary cementitious backer unit applied parallel or at right angles to one side of 2 x 4 wood studs 16" o.c. with 1-1/2" galvanized roofing nails or 1-5/8" wafer head screws 8" o.c. Ceramic tile, 1/4" thick, joints grouted, installed with latex-modified portland cement mortar or ANSI A136.1 Type I organic adhesive. 3-1/2" mineral fiber insulation, 2.0 pcf, friction fit in stud space.

Opposite Side: One layer 5/8" proprietary Type X gypsum wallboard applied parallel or at right angles to studs with 6d cement coated nails, 1-7/8" long. 0.0915" shank, 1/4" heads, 7" o.c. As an alternate, one layer 1/2" thick proprietary cementitious backer unit applied with 1-1/2" galvanized roofing nails or 1-5/8" wafer head screws 8" o.c. and faced with ceramic tile. (FSTC 37 when alternate is used.) (Load-Bearing)

Gypsum Wallboard, Wood Studs, Mineral Fiber Insulation, Fiber-Cement Board, Ceramic Tile

1-Hour Fire Rating

Test Reference: OPL 11710-92851, 9-9-92

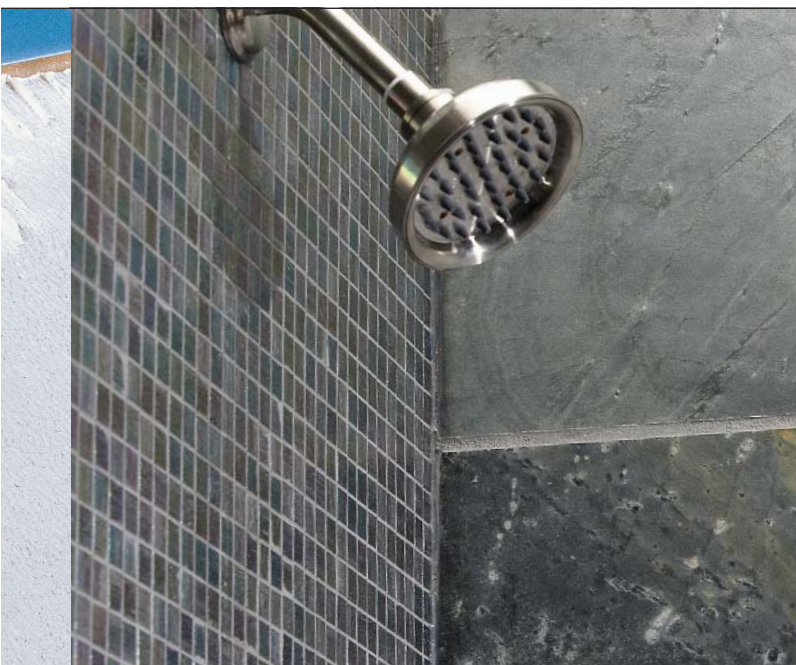


Partition Thickness: 5" Weight per Sq. Ft.: 10.0

One layer 5/8" proprietary Type X gypsum wallboard applied parallel on ONE SIDE of 2 x 4 wood studs 16" o.c. with 1-7/8" smooth shank nails, 0.093" shank, 0.284" heads, 7" o.c. 3-1/2" mineral fiber insulation 3.0 pcf, friction fit in stud space.

Opposite Side: One layer 7/16" proprietary fiber-cement board applied parallel to studs with 12" galvanized roofing nails 6" o.c.

Ratings based on the lesser of loading to 800 lbs per stud or 31% of full design load. (Limited Load-Bearing)





SALES INFORMATION AND ORDER PLACEMENT

U.S.A. Midwest: **1-800-876-4746**
South: **1-800-327-2344**
Northeast: **1-800-947-4497**
West: **1-800-824-7503**

CANADA Canada Toll Free: **1-800-387-6823**
Quebec Toll Free: **1-800-361-0486**

TECHNICAL INFORMATION

Georgia-Pacific Gypsum Technical Hotline
U.S.A. and Canada: **1-800-225-6119**
www.gpgypsum.com



TRADEMARKS

DENSSHIELD, FIREGUARD and the GEORGIA-PACIFIC logo are trademarks owned by or licensed to Georgia-Pacific Gypsum LLC.

UPDATES AND CURRENT INFORMATION

The information in this document may change without notice. Visit our website at www.gpgypsum.com for updates and current information.

LIMITATION OF REMEDIES AND DAMAGES

Unless otherwise stated in our written warranty for these products, our sole liability for any product claim shall be limited to reimbursement of the cost of repair or replacement of the affected product, up to a maximum amount of two times the original purchase price for the affected product. We shall not be responsible under any circumstances for lost profits, damage to a structure or its contents, or indirect, incidental, special or consequential damages. Claims shall be

deemed waived if they are not submitted to us in writing within ten (10) days after discovery of a product defect/circumstance giving rise to a claim.

CAUTION: For product fire, safety and use information, go to gp.com/safetyinfo.

HANDLING AND USE

CAUTION: This product contains fiberglass facings which may cause skin irritation. Dust and fibers produced during the handling and installation of the product may cause skin, eye and respiratory tract irritation. Avoid breathing dust and minimize contact with skin and eyes. Wear long sleeve shirts, long pants and eye protection. Always maintain adequate ventilation. Use a dust mask or NIOSH/MSHA approved respirator as appropriate in dusty or poorly ventilated areas. For additional product fire, safety and use information go to www.gp.com/safetyinfo or call 1-800-225-6119.

FIRE SAFETY CAUTION

Passing a fire test in a controlled laboratory setting and/or certifying or labeling a product as having a one-hour, two-hour, or any other fire resistance or protection rating and, therefore, as acceptable for use in certain fire rated assemblies/systems, does not mean that either a particular assembly/system incorporating the product, or any given piece of the product itself, will necessarily provide one-hour fire resistance, two-hour fire resistance, or any other specified fire resistance or protection in an actual fire. In the event of an actual fire, you should immediately take any and all actions necessary for your safety and the safety of others without regard for any fire rating of any product or assembly/system.