

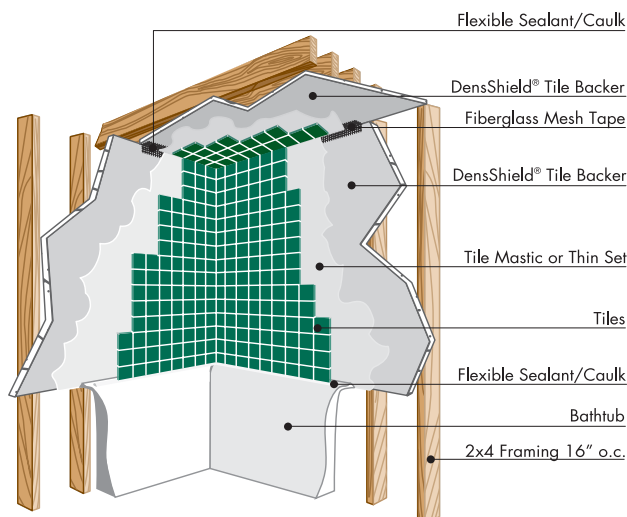
International Building Codes have changed to improve construction practices

The International Building Code (IBC) states in section 2509.2 Base for Tile: “Cement, fiber cement, or glass-mat gypsum backers in compliance with ASTM C 1178, C1288, or C1325 and installed in accordance with manufacturer recommendations shall be used as a base for wall tile in tub and shower areas and wall and ceiling panels in shower areas.”

The 2006 IBC also states that water-resistant gypsum backing board, more commonly known as Greenboard, shall not be used where there will be direct exposure to water or in areas subject to continuous high humidity.

DensShield® Tile Backer meets this most recent code change because it has a unique acrylic coating as a built-in moisture barrier on the face which blocks moisture from entering the wall cavity. It’s ideal for wet areas, which are defined by the IBC as walls within two feet of urinals, water closet walls to a height of four feet above the floors and shower compartment/bathtubs with a shower head walls no less than 70 inches above the drain inlet.

Proper installation of cement and fiber-cement backers, according to the current *Tile Council of North America Handbook for Ceramic Tile Installation*, requires the use of



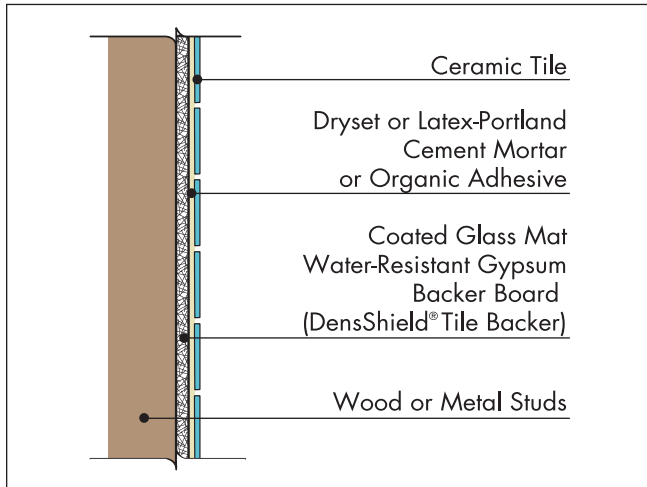
a membrane in wet areas (reference sections W244 C and F and B214). DensShield Tile Backer does not require this added step, saving time and money.

Not every municipality has adopted the 2006 IBC, however, many have or have plans to in the near future. Awareness of the coming changes and proper installation methods help builders and contractors stay ahead of the curve and implement the use of better building practices today. To check the status of your municipality visit www.iccsafe.org and click on the *I-code Adoptions* link.

The international codes are modern, up-to-date codes that address the design and construction of residential and commercial dwellings. The IBC has an impact on building design, materials used and the overall construction process. State, local and municipal jurisdictions can adopt these codes or amend codes to meet their circumstances. Currently, nearly every state and the District of Columbia have adopted all or part of the IBC for tile backers.

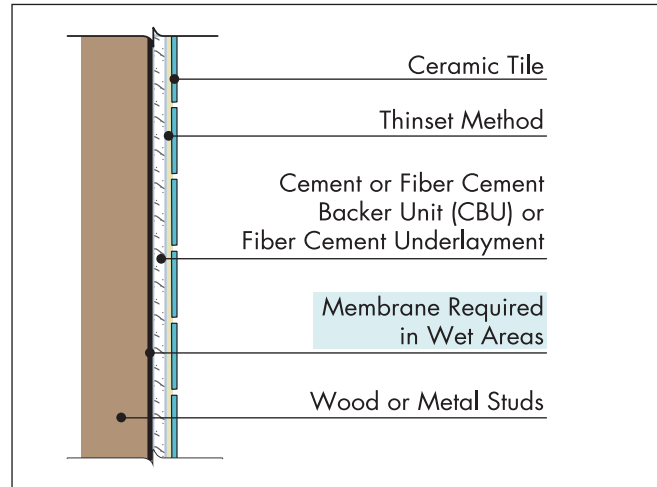
Interior Walls

DensShield® Tile Backer*



For use in wet or dry areas

Cement Backer / Fiber Cement Backer / Fiber Cement Underlayment Thinset*



For use in wet or dry areas

*Reference 2008 Tile Council of North America Handbook (pages 59 and 60) for details.



SALES INFORMATION AND ORDER PLACEMENT

U.S.A. Midwest: 1-800-876-4746
 South: 1-800-327-2344
 Northeast: 1-800-947-4497
 West: 1-800-824-7503

CANADA Canada Toll Free: 1-800-387-6823
 Quebec Toll Free: 1-800-361-0486

TECHNICAL INFORMATION

Georgia-Pacific Gypsum Technical Hotline
 U.S.A. and Canada: 1-800-225-6119
www.gpgypsum.com

TRADEMARKS
 DENSSHIELD and the GEORGIA-PACIFIC logo are trademarks owned by or licensed to Georgia-Pacific Gypsum LLC. TCNA Logo is a trademark of Tile Council of North America.

UPDATES AND CURRENT INFORMATION
 The information in this document may change without notice. Visit our website at www.gpgypsum.com for updates and current information.

LIMITATION OF REMEDIES AND DAMAGES
 Unless otherwise stated in our written warranty for these products, our sole liability for any product claim shall be limited to reimbursement of the cost of repair or replacement of the affected product, up to a maximum amount of two times the original purchase price for the affected product. We shall not be responsible under any circumstances for lost profits, damage to a structure or its

contents, or indirect, incidental, special or consequential damages. Claims shall be deemed waived if they are not submitted to us in writing within ten (10) days after discovery of a product defect/circumstance giving rise to a claim.

CAUTION: For product fire, safety and use information, go to gp.com/safetyinfo.

HANDLING AND USE
CAUTION: This product contains fiberglass facings which may cause skin irritation. Dust and fibers produced during the handling and installation of the product may cause skin, eye and respiratory tract irritation. Avoid breathing dust and minimize contact with skin and eyes. Wear long sleeve shirts, long pants and eye protection. Always maintain adequate ventilation. Use a dust mask or NIOSH/MSHA approved respirator as appropriate in dusty or poorly ventilated areas. For additional product fire,

safety and use information go to www.gp.com/safetyinfo or call 1-800-225-6119.

FIRE SAFETY CAUTION
 Passing a fire test in a controlled laboratory setting and/or certifying or labeling a product as having a one-hour, two-hour, or any other fire resistance or protection rating and, therefore, as acceptable for use in certain fire rated assemblies/systems, does not mean that either a particular assembly/system incorporating the product, or any given piece of the product itself, will necessarily provide one-hour fire resistance, two-hour fire resistance, or any other specified fire resistance or protection in an actual fire. In the event of an actual fire, you should immediately take any and all actions necessary for your safety and the safety of others without regard for any fire rating of any product or assembly/system.

