

DensGlass™ Exterior Sheathing Tremco Air Barrier Systems

Commercial Cavity Wall Assembly

Cold Climate

Exterior Elevations other than EIFS

Interior Gypsum Panel Manufacturer

Georgia-Pacific Gypsum LLC

Interior Gypsum Panel Names

DensArmor Plus® High-Performance

Interior Panel

Metal Studs:

4" or 6" deep galvanized steel

Exterior Gypsum Sheathing Manufacturer

Georgia-Pacific Gypsum LLC

Exterior Gypsum Sheathing Names

DensGlass™ Exterior Sheathing

Air Barrier Membrane Manufacturer

Tremco Commercial Sealants & Waterproofing

Air Barrier Membrane

ExoAir™ 110/110LT Membrane

ExoAir™ 120 Fluid-Applied AVB Membrane

ExoAir™ 220 Fluid-Applied VP Membrane

ExoAir™ TWF Membrane

Wall Insulation Manufacturer

Dow Chemical Company

Wall Insulation Name

Styrofoam™ Cavitymate™ SC

Product Descriptions

DensGlass™ Exterior Sheathing is an engineered exterior gypsum sheathing. It has a specially treated gypsum core and embedded fiberglass mats on both sides for superior moisture, fire and mold* resistance. This product can remain exposed to the elements for up to twelve months and is an ideal substrate for a wide variety of exterior claddings.

DensArmor Plus® High-Performance Interior Panels are specially engineered interior gypsum panels. With its patented treated core and embedded fiberglass mats front and back, this enhanced product provides superior fire, moisture, and mold* resistance. This product should be finished with a mold-resistant finish system. DensArmor Plus panels are GREENGUARD® Certified for low chemical emissions and have been listed as microbial resistant by the GREENGUARD Environmental Institute.

Styrofoam™ Cavitymate™ SC is an extruded polystyrene foam insulation board with shiplap edges along the long edges of the board. Controls condensation, corrects steel stud thermal short and improves the performance of insulating batting.

ExoAir™ 110/110LT is a self-adhered, 40 mil thick air and vapor barrier membrane. The membrane consists of 36 mils of self-adhering SBS rubberized asphalt laminated to a 4 mil cross-laminated high-density

polyethylene film with a siliconized release liner. The ExoAir 110/110LT membrane is an impermeable air, vapor and water barrier. When adhering ExoAir 110/110LT to the surface of DensGlass Exterior Sheathing, it must first be primed. Use ExoAir™ 10 Primer or ExoAir™ 10WB primer to ensure a clean, sound surface to receive the membrane.

ExoAir™ 120 Fluid-Applied Air & Vapor Barrier Membrane is a single component, seamless, fully adhered membrane. It is a polymer-modified emulsion, environmentally responsible and can be applied by spray or roller. ExoAir 120 is an impermeable air, vapor and water barrier. When applying over DensGlass Exterior Sheathing, joints in exterior sheathing panels should be treated with compatible Tremco sealants, and no priming is required. ExoAir 120 offers excellent adhesion to the surface of DensGlass panels. ExoAir 120 is used in conjunction with other system components to bridge to adjacent structural building components.

ExoAir™ 220 Fluid-Applied Vapor Permeable Air Barrier Membrane is a single component, seamless, fully adhered membrane. It is a polymer-modified emulsion, environmentally responsible and designed for roller application. ExoAir 220 has a water vapor

continued

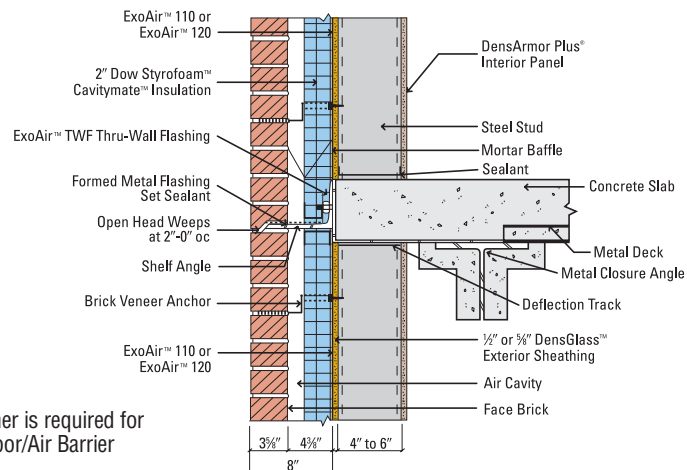
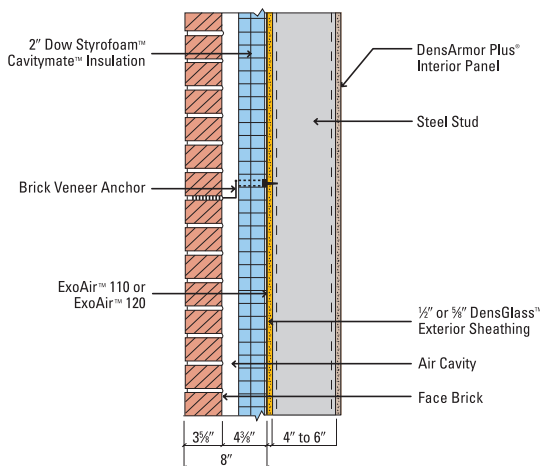
* Tested, as manufactured, per ASTM D 3273.

Product	1/2"	5/8"	1"	1.55"	1 3/4"	2"	2 5/8"	Type X	Smoke Developed	Flame Spread
Gypsum Panels										
DensGlass™ Exterior Sheathing	X	X						X	0	0
DensArmor Plus® Interior Panel	X	X						X	0	0
Insulation										
Styrofoam™ Cavitymate™ SC R-Value			X 5	X 7.5		X 10				

permeance of 12 perms. The membrane is also an air and water barrier.

ExoAir™ TWF is a self-adhered 40 mil (Thru-Wall Flashing) membrane. The membrane consists of 32 mils of self-adhering SBS rubberized asphalt laminated to an 8 mil cross-laminated, high-density polyethylene film with a siliconized release liner. The ExoAir TWF membrane is an impermeable air, vapor and water barrier. When adhering ExoAir TWF to the surface of DensGlass™ Exterior Sheathing, it must first be primed. Use ExoAir 10 Primer or ExoAir 10WB Primer to ensure a clean, sound surface to receive the membrane.

Additional ExoAir™ Air Barrier Systems components are available, including primers for use on most typical construction surfaces, silicone and EPDM sheet extrusions, and both silicone and urethane sealants for use as edge terminations and connections to adjacent surfaces, windows and doors.



Note: ExoAir™ 10 Primer is required for ExoAir™ 110 Vapor/Air Barrier



SALES INFORMATION AND ORDER PLACEMENT

U.S.A. Midwest: **1-800-876-4746** West: **1-800-824-7503**
South: **1-800-327-2344** Northeast: **1-800-947-4497**

CANADA Canada Toll Free: **1-800-387-6823**
Quebec Toll Free: **1-800-361-0486**

TECHNICAL INFORMATION

Georgia-Pacific Gypsum Technical Hotline
U.S.A. and Canada: **1-800-225-6119**
www.gpgypsum.com

CAUTION: For product fire, safety and use information, go to gp.com/safetyinfo.

TRADEMARKS

DENSARMOR PLUS, DENSGLASS and the GEORGIA-PACIFIC logo are trademarks owned by or licensed to Georgia-Pacific Gypsum LLC. The GREENGUARD INDOOR AIR QUALITY CERTIFIED Mark is a registered certification mark used under license through the GREENGUARD Environmental Institute. STYROFOAM and CAVITYMATE are trademarks of Dow Chemical Company. PRE-KLEENED is a trademark of Carlisle Coatings & Waterproofing, Inc.

UPDATES AND CURRENT INFORMATION

The information in this document may change without notice. Visit our website at www.gpgypsum.com for updates and current information.

LIMITATION OF REMEDIES AND DAMAGES

Unless otherwise stated in our written warranty for these products, our sole liability for any product claim shall be limited to reimbursement of the cost of repair or replacement of the affected product, up to a maximum amount of two

times the original purchase price for the affected product. We shall not be responsible under any circumstances for lost profits, damage to a structure or its contents, or indirect, incidental, special or consequential damages. Claims shall be deemed waived if they are not submitted to us in writing within ten (10) days after discovery of a product defect/circumstance giving rise to a claim.

CAUTION: For product fire, safety and use information, go to gp.com/safetyinfo.

HANDLING AND USE

CAUTION: This product contains fiberglass facings which may cause skin irritation. Dust and fibers produced during the handling and installation of the product may cause skin, eye and respiratory tract irritation. Avoid breathing dust and minimize contact with skin and eyes. Wear long sleeve shirts, long pants and eye protection. Always maintain adequate ventilation. Use a dust mask or NIOSH/MSHA approved respirator as appro-

priate in dusty or poorly ventilated areas. For additional product fire, safety and use information go to www.gp.com/safetyinfo or call 1-800-225-6119.

FIRE SAFETY CAUTION

Passing a fire test in a controlled laboratory setting and/or certifying or labeling a product as having a one-hour, two-hour, or any other fire resistance or protection rating and, therefore, as acceptable for use in certain fire rated assemblies/systems, does not mean that either a particular assembly/system incorporating the product, or any given piece of the product itself, will necessarily provide one-hour fire resistance, two-hour fire resistance, or any other specified fire resistance or protection in an actual fire. In the event of an actual fire, you should immediately take any and all actions necessary for your safety and the safety of others without regard for any fire rating of any product or assembly/system.