

## DensGlass™ Exterior Sheathing Carlisle Air Barrier Systems

### Commercial Cavity Wall Assembly

Cold Climate

Exterior Elevations other than EIFS

### Interior Gypsum Panel Manufacturer

Georgia-Pacific Gypsum LLC

### Interior Gypsum Panel Names

DensArmor Plus® High-Performance

Interior Panels

### Metal Studs:

4" or 6" deep galvanized steel

### Exterior Gypsum Sheathing Manufacturer

Georgia-Pacific Gypsum LLC

### Exterior Gypsum Sheathing Names

DensGlass™ Exterior Sheathing

### Air Barrier Membrane Manufacturer

Carlisle Coatings & Waterproofing Inc.

### Air Barrier Membrane

40 mil air/vapor barrier

### Wall Insulation Manufacturer

Dow Chemical Company

### Wall Insulation Name

Styrofoam™ Cavitymate™ SC

### Product Descriptions

**DensGlass™ Exterior Sheathing** is an engineered exterior gypsum sheathing. It has a specially treated gypsum core and embedded fiberglass mats on both sides for superior moisture, fire and mold\* resistance. This product can remain exposed to the elements for up to twelve months and is an ideal substrate for a wide variety of exterior claddings.

**DensArmor Plus® High-Performance Interior Panels** are specially engineered interior gypsum panels. With its patented treated core and embedded fiberglass mats front and back, this enhanced product provides superior fire, moisture, and mold\* resistance. This product should be finished with a mold-resistant finish system. DensArmor Plus panels are GREENGUARD® Certified for low chemical emissions and have been listed as microbial resistant by the GREENGUARD Environmental Institute.

**Styrofoam™ Cavitymate™ SC** is an extruded polystyrene foam insulation board with shiplap edges along the long edges of the board. Controls condensation, corrects steel stud thermal short and improves the performance of insulating batting.

**The CCW-705 Vapor/Air Barrier System** is a 40 mil thick composite consisting of a 36 mil self-adhering rubberized asphalt membrane laminated to an 4 mil high density polyethylene film. A siliconized release liner

prevents the material from sticking together in the roll and is easily removed for installation. CCW-705 is available in convenient widths of 18, 24 and 36 inches. The factory controlled quality assures uniform thickness on the job, providing an excellent air and moisture vapor barrier.

**The CCW-705-TWF Thru-Wall Flashing** is a 40 mil thick composite consisting of a 32 mil self-adhering rubberized asphalt membrane laminated to an 8 mil high density polyethylene film. A siliconized release liner prevents the material from sticking together in the roll, and is easily removed for installation. CCW-705-TWF is available in convenient widths of 12, 18, 24 and 36 inches. The factory controlled quality assures uniform thickness on the job, while the inherent waterproofing properties of the rubberized asphalt membrane provide an excellent water barrier. The heavy polyethylene film is resistant to cuts and tears.

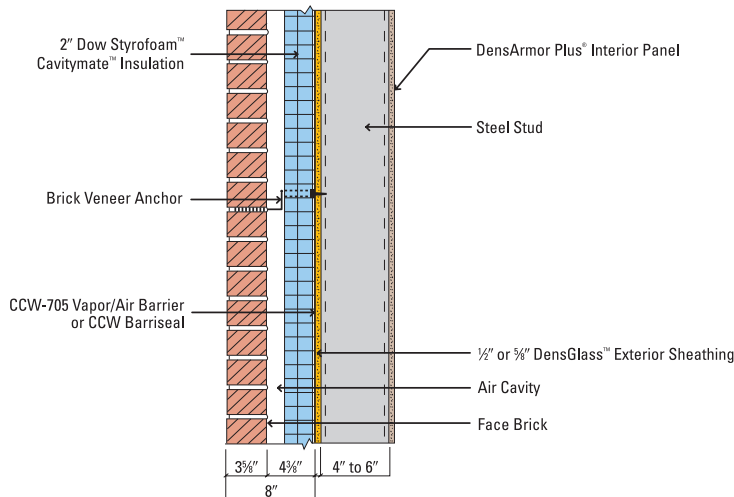
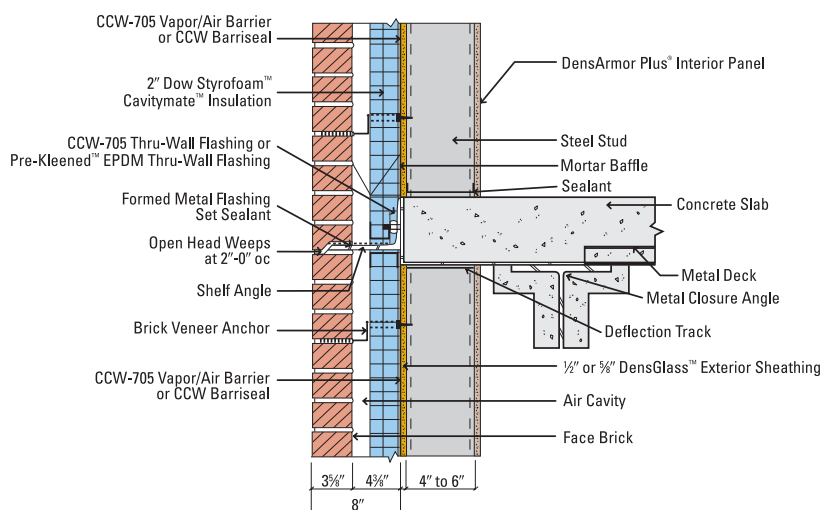
**Barriseal** is a roller or spray applied, water-based asphalt emulsion modified with a blend of synthetic rubbers and special additives which cures to form a flexible, monolithic air/vapor barrier for many substrates in cavity wall construction. Barriseal-R is a roller grade product. Barriseal-S is applied using special spray equipment.

*continued*

\* Tested, as manufactured, per ASTM D 3273.

Product	½"	¾"	1"	1.55"	1¾"	2"	2½"	Type X	Smoke Developed	Flame Spread
<b>Gypsum Panels</b>										
DensGlass™ Exterior Sheathing	×	×						×	0	0
DensArmor Plus® Interior Panel	×	×						×	0	0
<b>Insulation</b>										
Styrofoam™ Cavitymate™ SC			×	×		×				
R-Value			5	7.5		10				

**Pre-Kleened™ EPDM, Thru-Wall Flashing** is a 40 mil EPDM membrane and is available in a variety of widths by 100' length. This material has been pre-washed, thus eliminating the need to remove talc during installation.



Note: CCW Primer is required for the CCW-705 Vapor/Air Barrier.



## SALES INFORMATION AND ORDER PLACEMENT

U.S.A. Midwest: **1-800-876-4746** West: **1-800-824-7503**  
South: **1-800-327-2344** Northeast: **1-800-947-4497**

CANADA Canada Toll Free: **1-800-387-6823**  
Quebec Toll Free: **1-800-361-0486**

## TECHNICAL INFORMATION

Georgia-Pacific Gypsum Technical Hotline  
U.S.A. and Canada: **1-800-225-6119**  
[www.gpgypsum.com](http://www.gpgypsum.com)

**CAUTION: For product fire, safety and use information, go to [gp.com/safetyinfo](http://gp.com/safetyinfo).**

## TRADEMARKS

DENSARMOR PLUS, DENSGLASS and the GEORGIA-PACIFIC logo are trademarks owned by or licensed to Georgia-Pacific Gypsum LLC. The GREENGUARD INDOOR AIR QUALITY CERTIFIED Mark is a registered certification mark used under license through the GREENGUARD Environmental Institute. STYROFOAM and CAVITYMATE are trademarks of Dow Chemical Company. PRE-KLEENED is a trademark of Carlisle Coatings & Waterproofing, Inc.

## UPDATES AND CURRENT INFORMATION

The information in this document may change without notice. Visit our website at [www.gpgypsum.com](http://www.gpgypsum.com) for updates and current information.

## LIMITATION OF REMEDIES AND DAMAGES

Unless otherwise stated in our written warranty for these products, our sole liability for any product claim shall be limited to reimbursement of the cost of repair or replacement of the affected product, up to a maximum amount of two

times the original purchase price for the affected product. We shall not be responsible under any circumstances for lost profits, damage to a structure or its contents, or indirect, incidental, special or consequential damages. Claims shall be deemed waived if they are not submitted to us in writing within ten (10) days after discovery of a product defect/circumstance giving rise to a claim.

**CAUTION: For product fire, safety and use information, go to [gp.com/safetyinfo](http://gp.com/safetyinfo).**

## HANDLING AND USE

**CAUTION:** This product contains fiberglass facings which may cause skin irritation. Dust and fibers produced during the handling and installation of the product may cause skin, eye and respiratory tract irritation. Avoid breathing dust and minimize contact with skin and eyes. Wear long sleeve shirts, long pants and eye protection. Always maintain adequate ventilation. Use a dust mask or NIOSH/MSHA approved respirator as appro-

priate in dusty or poorly ventilated areas. For additional product fire, safety and use information go to [www.gp.com/safetyinfo](http://www.gp.com/safetyinfo) or call 1-800-225-6119.

## FIRE SAFETY CAUTION

Passing a fire test in a controlled laboratory setting and/or certifying or labeling a product as having a one-hour, two-hour, or any other fire resistance or protection rating and, therefore, as acceptable for use in certain fire rated assemblies/systems, does not mean that either a particular assembly/system incorporating the product, or any given piece of the product itself, will necessarily provide one-hour fire resistance, two-hour fire resistance, or any other specified fire resistance or protection in an actual fire. In the event of an actual fire, you should immediately take any and all actions necessary for your safety and the safety of others without regard for any fire rating of any product or assembly/system.